

ONWARD — CAMANO



Builder: CAMANO

Year Built: 2003

Model: Trawler

Price: PRICE ON APPLICATION

Location: United States

LOA: 31' 0" (9.45m)

Beam: 10' 6" (3.20m)

Min Draft: 3' 3" (0.99m)

Our experienced yacht broker, Andrey Shestakov, will help you choose and buy a yacht that best suits your needs **ONWARD — CAMANO** from our catalogue. Presently, at Shestakov Yacht Sales Inc., we have a wide variety of yachts available on our sale's list. We also work in close contact with all the big yacht manufacturers from all over the world.

If you would like to buy a yacht **ONWARD — CAMANO** or would like help answering any questions concerning purchasing, selling or chartering a yacht, please call **+1(954)274-4435**

TABLE OF CONTENTS

TABLE OF CONTENTS	2
SPECIFICATIONS	5
Overview	5
Basic Information	5
Dimensions	5
Speed, Capacities and Weight	5
Accommodations	5
Hull and Deck Information	6
Engine Information	6
DETAILED INFORMATION	7
Vessel Walkthrough & Accommodations	7
Salon	7
Galley	7
Head	8
Navigation & Electronics Equipment	8
Electrical System	8
Engine & Mechanical Systems	8
Deck & Hull Equipment	9
Flybridge	10
Construction	10
Equipment & Features Added by Owner	10
Broker Comments	11
Exclusions	11
Disclaimer	11
PHOTOS	12
Locking Thru in Ottawa Canada	12
Salon Forward	12
Salon to Port	12

Salon/Lower Helm to Starboard	12
Lower Helm with Great Visibility	13
Autopilot - Lower Helm	13
Raymarine Color Plotter - Lower Helm	13
Furuno Radar - Lower Helm	13
Galley to Port	14
Galley to Master Stateroom	14
Master Stateroom Forward	14
Master Stateroom to Port	14
Master Stateroom to Starboard	14
Master Stateroom Aft	14
Vacuflush Head	15
Head Sink	15
Galley Aft	15
Salon Aft	15
Anchored off the Tennessee River	15
Cockpit with Magma Grill & Dinghy on Weaver Davits	15
Ladder to Flybridge	16
Cockpit Storage	16
Flybridge Helm Covered - Sunbrella	16
Flybridge Forward	16
Flybridge Helm	17
Raymarine Color Plotter	17
Bow View from Flyridge	17
Flybridge Aft - Relax and Watch the Sunset!	17
Flybridge View from Bow	17
Bow	17
Volvo 200 HP	18
AGM Batteries - New 11/2013	18

Ready to Cruise!	18
Genset	18
CONTACTS	19
Contact details	19
Telephones	19
Office hours	19
Address	19

SPECIFICATIONS

Overview

The Camano 31' is a one stateroom, one head, trawler with a large salon and very practical galley down two steps. She entertains eight, seats six for meals and sleeps four comfortably. With two helm stations, a large flybridge and great 360 degree visibility in the salon, she makes a wonderful "Pocket Trawler". "ONWARD" is ready for her next adventure.

Basic Information

Category: Trawler

Model Year: 2003

Year Built: 2003

Country: United States

Vessel Top: Bimini Top

Fly Bridge: Yes

Cockpit: Yes

Dimensions

LOA: 31' 0" (9.45m)

Beam: 10' 6" (3.20m)

Min Draft: 3' 3" (0.99m)

Speed, Capacities and Weight

Displacement: 10000 Pounds

Water Capacity: 77 Gallons

Holding Tank: 12 Gallons

Fuel Capacity: 133 Gallons

Accommodations

Total Cabins: 1

Total Heads: 1

Hull and Deck Information

Hull Material: Fiberglass

Engine Information

Engines: 1

Manufacturer: Volvo

Model: TAMD41

Engine Type: Inboard

Fuel Type: Diesel

DETAILED INFORMATION

Vessel Walkthrough & Accommodations

The Camano 31' is a one stateroom, 1 head trawler with a large salon and very practical galley down two steps. She entertains eight, seats six for meals, and sleeps four comfortably. With two helm stations, a large flybridge and great 360 degree visibility in the salon, she makes a wonderful "Pocket Trawler".

Salon

One of the great features of the Camano is it's large and very bright salon. With excellent ventilation and 360 degree visibility, the salon is comfortable in all conditions.

Specific features include:

- Trimmed Mahogany & Formica counters
- Teak and Holly Sole
- Dinette converts to double berth with 5" cushions
- 5" upholstered foam mattress on forward berth with filler cushion
- Side and aft curtains in salon
- Mahogany steering wheel
- Factory optional Helm Chair
- CD player with (2) speakers
- Color flat screen TV
- 2 bookcases
- 2 shelves in berth area
- Navigation drawer
- 4 large storage drawers & a cutlery drawer
- Spacious hanging locker
- Additional abundant storage throughout

Galley

- Force 10 (3) burner propane stove w/broiler and cutting board top Propane alarm
- Microwave Oven
- SS sink with H/C water
- Water Heater (New 2014)
- 12/110V Freezer/Refrigerator
- Lots of cabinets for storage
- A/C outlet
- Opening porthole w/fan

- 110v duplex outlet
- 12v lighting
- Fully Fitted with dishes, pots, pans, cutlery, etc

Head

- Vacuflush toilet system
- 15 gallon holding tank with macerator and deck pump out

Navigation & Electronics Equipment

- Raymarine RL 70 Color Plotter GPS Chart/Bottom Finder – Both Stations
- ST 6000 Autopilot Remote - Upper
- ICOM – M304 VHF radio - Upper
- Furuno 1623 Radar (New 2014) - Lower
- Standard Horizon Scanning VHF - Lower
- ST 5000 Autopilot - lower
- Tank Watch
- Vacuflush Tank Watch
- Pioneer Stereo Radio / CD player

Electrical System

- Electrical panel including meters for amps and volts
- AC breaker panel with polarity indicator
- DC breaker panel with color coded wiring
- All AC and DC circuits protected by magnetic breakers
- (4) Group 31 Batteries (genset start, engine start and (2) house AGM - New 11/2013
- Xantrax 1750 Inverter
- Fisher Panda 4 kw Generator - rebuilt at 280 hours (has 73 hours since rebuild = 352 hrs total)
- 30 amp Shorepower connection
- (4) duplex 110V outlets (GFI protected)
- (9) double dome lights - main cabin, galley and head
- (2) reading lights - berth area

Engine & Mechanical Systems

Volvo Penta TAMD41, 200 HP. The engine has been well maintained with regular engine oil changes. The mechanical layout on the Camano is well thought out with easy access to all components. Detail features include:

- 4 blade bronze propeller protected by a full skeg
- 2 plastic water tanks - total approx. 70 gallons
- Pressure fresh water system
- 110V and engine hot water heater
- (3) automatic bilge pumps
- Shower 12v power drain pump
- Bilge pump alarm and warning light
- Bronze ball valves on all under-water fittings
- All under water metal bonded to zinc anode
- 4 blade bronze 20 x 20 prop - 1 1/2" stainless steel 316 shaft
- 1 1/4" stainless steel 316 alloy rudder stock
- Stainless steel 316 alloy skeg protecting prop and rudder
- Racor fuel filtration between fuel tanks and engine (dual system)
- Sea water strainers (engine, genset, A/C)
- 2 aluminum fuel tanks - total approx. 133 gallons
- Fuel gauge - each tank
- Dual control station with 2 lever cable control
- Hydraulic steering - 2 stations
- Stainless steering wheel at upper station
- Electric bow thruster 5 hp (8") - Controls at both helm stations
- Tankwatch Holding tank monitor

Deck & Hull Equipment

Bottom painted 03/2014.

- The hull is hand laid fiberglass with Core Cell foam in the deck house. All floors have two layers of sound bleeding insulation
- 5 HP Electric bow thruster
- Maxwell 600 Electric Windless
- Bruce 33 lb Anchor with 60' feet of chain and 200' of rode
- Fortress FX 16 Anchor with 30' of chain and 150' of rode
- Three windshield wipers at lower helm area.
- Diamond Sea Glaze on Main Door
- Diamond Sea Glaze on all windows that all have screens.
- Transom Door
- Fiberglass Swim Platform with swim ladder
- Weaver Davits on swim platform for dinghy handling
- 8.5' Achilles Inflatable with Weaver Davits (New 2014)
- 2.5 HP Lehr Propane Outboard (New 2014)
- Salt water wash down in cockpit
- Hot & Cold Cockpit Shower
- Magma Grill (New 2014)

- Textaline window covering for side and front windshield windows
- Sunbrella window covering for front windshield windows

Flybridge

- Full Second Steering Station
- Remote for Autopilot
- VHF Radio
- Saturn 3" Compass (needs oil)
- Black Sunbrella helm cover
- Bimini top extends from front of windshield to back of flybridge - black Sunbrella
- (3) Helm Seats Forward with cushions
- (2) Aluminum white cushioned foldable chairs

Construction

All laminates are hand laid mat and roving. Hull bottom is solid glass with 6 longitudinal stringers. High stress area of keel includes carbon fibre along with mat and roving to a thickness as great as 1". Hull sides above waterline and all cabin areas are cored for stiffness as well as sound and thermal insulation. Glass content in foam cored area has sufficient strength to stand alone. Hull to deck joint is fibreglassed together along with bulkheads to form an integral structure. The highest quality fiberglass and gelcoat materials are used. Engine room area surrounded with heavy duty construction and insulated with modern sound proofing materials.

- Powder coated welded aluminum exterior swinging door
- Powder coated aluminum framed cabin windows with additional thickness safety glass (3 sliding)
- Deck cleats through-bolted with aluminum backing plates.

Equipment & Features Added by Owner

- Fenders and lines
- Flybridge cover
- USCG safety package
- Miscellaneous spare parts
- 8.5' Achilles Inflatable (not titled) with Lehr Propane Outboard (New 2014)
- Fresh Water Pump (New 2014)
- 30 amp Power Cord (New 2014)
- Exterior Window Covers
- Magma Grill (New 2014)
- Bottom painted 03/2014

-
- Full set of Manuals
 - Lots of spare parts and marine repair items
 - Fully found with dishes, flatware, etc.

Broker Comments

All staging decorations are owned by Bill Watson, Listing Broker with Bartram & Brakenhoff.

Exclusions

Owner's personal belongings.

Disclaimer

The Company offers the details of this vessel or yacht in good faith but cannot guarantee or warrant the accuracy of this information nor warrant the condition of the vessel. A buyer should instruct his representatives, agents, or his surveyors, to investigate such details as the buyer desires validated. This vessel or yacht is offered subject to prior sale, price change, or withdrawal without notice.

PHOTOS

Locking Thru in Ottawa Canada



Salon Forward



Salon to Port



Salon/Lower Helm to Starboard



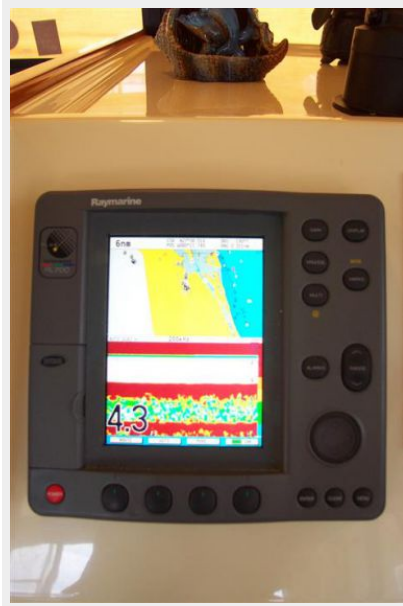
Lower Helm with Great Visibility



Autopilot - Lower Helm



Raymarine Color Plotter - Lower Helm



Furuno Radar - Lower Helm



Galley to Master Stateroom



Galley to Port



Master Stateroom Forward



Master Stateroom to Port



Master Stateroom to Starboard



Master Stateroom Aft



Vacuflush Head



Head Sink



Galley Aft



Salon Aft



Anchored off the Tennessee River



Cockpit with Magma Grill & Dinghy on Weaver Davits



Cockpit Storage



Ladder to Flybridge



Flybridge Helm Covered - Sunbrella



Flybridge Forward



Flybridge Helm



Raymarine Color Plotter



Bow View from Flyridge



Flybridge Aft - Relax and Watch the Sunset!



Flybridge View from Bow



Bow



Volvo 200 HP



AGM Batteries - New 11/2013



Ready to Cruise!

Genset



CONTACTS

Andrey Shestakov, leading yacht broker of the sales department of Shestakov Yacht Sales Inc. Shestakov Yacht Sales Inc., the official representative of the Miami/Fort Lauderdale FL headquarters.

Contact details

Email: andrey@shestakovyachtsales.com

Web: shestakovyachtsales.com/en/

Telephones

USA: +1(954)274-4435

Office hours

Monday – Saturday: **9:00 - 21:00** EDT

Sunday: **closed**

Address



Harbour Towne Marina, 850 NE 3rd St,
STE 213, Dania, FL 33004