

L'ODYSSEE — CNB CONSTRUCTION



Builder: CNB CONSTRUCTION

Year Built: 1935

Model: Cruising/Racing Sailboat

Price: PRICE ON APPLICATION

Location: Montenegro

LOA: 78' 6" (23.91m)

Beam: 15' 8" (4.75m)

Min Draft: 10' 6" (3.18m)

Cruise Speed: 7 Kts. (8 MPH)

Max Speed: 10 Kts. (12 MPH)

Our experienced yacht broker, Andrey Shestakov, will help you choose and buy a yacht that best suits your needs L'ODYSSEE — CNB CONSTRUCTION from our catalogue. Presently, at Shestakov Yacht Sales Inc., we have a wide variety of yachts available on our sale's list. We also work in close contact with all the big yacht manufacturers from all over the world.

If you would like to buy a yacht L'ODYSSEE — CNB CONSTRUCTION or would like help answering any questions concerning purchasing, selling or chartering a yacht, please call **+1(954)274-4435**

TABLE OF CONTENTS

TABLE OF CONTENTS	2
SPECIFICATIONS	3
Basic Information	3
Dimensions	3
Speed, Capacities and Weight	3
Accommodations	3
Hull and Deck Information	4
Engine Information	4
DETAILED INFORMATION	5
Detailed Description	5
Exclusions	10
Disclaimer	10
PHOTOS	11
CONTACTS	14
Contact details	14
Telephones	14
Office hours	14
Address	14

SPECIFICATIONS

Basic Information

Category: Cruising/Racing Sailboat

Model Year: 1935

Year Built: 1935

Refit Year: 2012

Country: Montenegro

Dimensions

LOA: 78' 6" (23.91m)

LWL: 58' 11" (17.94m)

LOD: 73' 0" (22.25m)

Beam: 15' 8" (4.75m)

Min Draft: 10' 6" (3.18m)

Speed, Capacities and Weight

Cruise Speed: 7 Kts. (8 MPH)

Cruise Speed RPM: 1600 Kts.

Cruise Speed Range: 700

Max Speed: 10 Kts. (12 MPH)

Max Speed RPM: 2200 Kts.

Displacement: 81571.03694 Pounds

Gross Tonnage: 59 Pounds

Water Capacity: 264.172052 Gallons

Fuel Capacity: 264.172052 Gallons

Accommodations

Total Cabins: 3

Sleeps: 6

Crew Cabin: 2

Crew Sleeps: 3

Hull and Deck Information

Hull Material: Oak

Deck Material: Teak

Hull Designer: F. Camatte

Interior Designer: Olivier Godefroy

Engine Information

Engines: 1

Manufacturer: Perkins

Fuel Type: Diesel

DETAILED INFORMATION

Detailed Description

1. MAIN CHARACTERISTICS

TYPE	Bermudian Ketch
BUILDER	Chantier Navale de Normandie, Fecamp
NAVAL ARCHITECT	F.Camatte
INTERIOR DESIGN	Olivier Godefroy
YEAR	1935
REFIT	2006(Malta), 2007(Toulon), 2011/12 (Sanary sur Mer)
CONSTRUCTION	Oak Hull on oak frames, teak deck & Superstructure
FLAG	USA
GT	59 tons
DISPLACEMENT	37 tons

2. DIMENSIONS

LOA	23.91m / 78'.4"
LOD	22.25m / 72'9"
LWL	17.94m / 58'8"
BEAM	4.75m / 15'5"
DRAFT	3.18m / 10'4"

3. SPEED & RANGE UNDER POWER

MAXIMUM SPEED	10 knots at 2,200rpm (sailing 15 knots)
CRUISING SPEED	7 knots at 1,600-1,800rpm
FUEL CONSUMPTION	10-15 l/hour at 7 knots
RANGE	700 nm without sails (with use of generator)

4. CAPACITIES

ACCOMMODATION	6 x Guests in 3 x double cabins, 1 in Doghouse
CREW	Captain's cabin & Twin crew cabin
FUEL	1,000 litres/264 US gallons
FRESH WATER	1,000 litres/264 US gallons

5. ACCOMMODATION

DOGHOUSE

The doghouse made from teak contains a watch bunk and storage space and leads to a mahogany curved steps leading to the Honduras mahogany passageway in which the navigation area is found. This passageway leads to three double cabins (A, B & C)

MASTER STATEROOM

Owners cabin (A) is in bird's eye maple and rosewood and has an overhead hatch giving plenty of natural light to the room. The cabin has a double bed, writing desk, five drawers, hanging wardrobe, en-suite bathroom with vanity basin set into a marble top, toilet and shower.

GUEST STATEROOMS

Portside cabin (B) is in sycamore and poplar, has a double bed, five drawers, hanging wardrobe, en-suite bathroom with vanity basin set into a marble top, toilet and shower.

Starboard cabin (C) is in sycamore and Norwegian silver birch, has a double bed, five drawers, hanging wardrobe, en-suite bathroom with vanity basin set into a marble top, toilet and shower.

MAIN SALOON

Saloon with dining for eight guests (D)

L Shaped seating arrangement to port (D)

MAHOGANY PASSAGEWAY

Comprehensive navigation station underneath the stairway

GALLEY/PANTRY

Galley to portside with fridges, microwave, gas-oven/grill and a combined icemaker/freezer

CREW

The Fore Peak has crew accommodation for 2 crew members (F) and Captain's cabin (E) next to the galley. In between the crew cabins on starboard side, there is a crew shower with vanity basin and toilet

6. MECHANICAL EQUIPMENT

ENGINES

1 x Perkins 6.354 Turbo Diesel
(Complete overhaul and serviced 2011)

ENGINE CONTROL

Mechanical Morse throttle to cockpit

GEARBOX

Velvet Drive 5000 (new 2006, serviced 2011)

PROPULSION

Maxprop (3 Blades)

STEERING SYSTEM

Lecomble & Schmitt Hydraulic Steering System (2006)

GENERATOR

Onan 13,5 MDKBP, mona-fase 220Volt (new 2011)

CHARGERS

Mastervolt Mass 24/75(2008)

WATER MAKER	Sea recovery (max. 120 litres per hour)
TOILET SYSTEM	3 x Jabsco Electric toilets and 1 Jabsco manual toilet

7. SAILS & RIGGING

SAILS	Dacron sail inventory by Zaoli Sails (2007) Some older foresails
RIGGING	All running rigging, stainless steel rigging and fittings supplied by Russo Yachting (2007)
WINCHES	6 x Bronze Barient Self tailing winches 8 x Bronze Barlow winches
MASTS/BOOMS/POLE	Mizzen mast, both booms and staysail boom built by Collars, UK, 2007 Mainmast old, but completely overhauled 2007. Wooden Spinnaker pole.

8. NAVIGATION EQUIPMENT

GYRO COMPASS	Furuno PG700 Mini-gyro (2012) Cassens & Plath
AUTOMATIC PILOT	Furuno NAVPilot 700(completely integrated with Raymarine e7 and Tacticks systems) (new 2012)
RADAR	Furuno FR821
DEPTHSOUNDER	Tacticks T912 Transducer (2007)
GPS	2 x Raymarine Multi-Functional Display E7 (2012)
WEATHER FAX	JRC Navtex NCR-300A
LOG	Tacticks T911 Transducer (2007)
WIND INSTRUMENTS	Tacticks T120 Wireless Wind Transmitter (2007)

9. COMMUNICATION EQUIPMENT

SATCOM	Thrane & Thrane Mini M TT3064A
VHF	Leisure DSC Sailor Navicom RT320 5 Watt (handhold)
EPIRB	ACR Electronics RLB-38 Cat II(02/2017)
SSB	IC-M700 - Single Sideband (not installed)

10. DECK EQUIPMENT

ANCHOR WINDLASSES	Ideal Electrical Windlass (serviced 2010)
ANCHORS	Hall Anchor 45 kg Brittany Anchor 40 kg
ANCHOR CHAIN	1 x 100 meters of 13 mm stud link chain
AWNINGS	Complete waterproof tent/awning in between

masts for cocktail parties

11. ENTERTAINMENT EQUIPMENT

- Sony CDX-GT620U(4 x 52w)
- Sony XPlod amplifier for 2 x Pioneer inside speakers & a Caliber 150W cockpit speaker
- TV Hyundai

12. GALLEY & LAUNDRY EQUIPMENT

GALLEY

- 1 x Oven Force 10, kombi gas oven and grill
- 1 x Microwave Goodmans GS200 Grill/Microwave (220 Volt)
- 1 x transformed U-line Ice-maker into kombi Ice-maker 220 Volt or 24 Volt Freezer
- 2 x custom built fridges (220 Volt)

13. SECURITY & SAFETY EQUIPMENT

SAFETY

- 2 x Eurovinil Life raft Iso 9650-1 Group A (6 Persons)
- 12 x Plastimo "Pilot" Automatic Lifejackets
- 2 x Grab bags for the inflatable Liferrafts
- 1 x Mechanical operated Bilge Pump Jabsco 51200-2011 for Main Engine
- That has a dual function as fire pump
- 2 x RULE 3700-24 Volt, with delayed automatic sensors

FIRE FIGHTING

- 6 x ABC Fire Extinguishers throughout the yacht
- 1 x 34B Fire Extinguisher near Chart Table
- 1 x Pyrogen Mag 4, Fire extinguisher in engine room
- 1 x Jabsco 51200-2011 main fire & bilge pump, bronze clutch pump, 200 litres/min @ 1,500 rpm
- 2 x Gasalarms
- 6 x Fire Alarms

14. TENDERS & WATERSPORTS EQUIPMENT

WATER SPORTS

- Snorkel and dive equipment on request
- Water skies
- Wind surfboard

- Fishing Gear
- Sun awning

15. REFIT HISTORY

2006

In 2006 L'Odyssée commenced a restoration at Melita Marine Shipyard in Malta. The yacht has been almost completely rebuilt with 80% of her hull planking being replaced, some frames being replaced and a new teak deck.

In the cockpit a new hydraulic steering system has been installed. All stainless steel tanks and the plumbing have been replaced. The yacht sailed over from Malta without her aluminium masts to Toulon where her new mizzen mast and booms, made and shipped by Collars UK, were waiting to be installed by Russo Yachting in La Seyne Sur Mer.

2011

Topsides faired & freshly repainted with Awl grip by Chantier Navale des Baux

Stern part completely rebuilt and fairleads been put back (CNDB)

4 x Frames replaced in engine room and 2 Frames replaced in the peak (CNDB)

Doghouse hatch and front entrance hatch refitted. (CNDB)

Iron Keel has been sandblasted and treated with a complete paint cycle. (CNDB)

Teak deck has been sanded and re-caulked where necessary (CNDB)

Main Engine & gearbox overhauled & completely serviced. (Motor Maintenance)

New stainless steel main engine exhaust system installed. (MM)

New Generator installed. (MM)

Compressor pumps serviced. (Hydro Electric Marine)

Engine room completely repainted.

Peak completely painted.

Wooden blocks re-varnished and new bearings

Passerelle refurbished and varnished

2012

Furuno Autopilot system with Raymarine e7 Hybrid Touch Screen in cockpit and navigation table working seaming less with all data from Tackticks and radar. (Morvan Electronique)

Galley has new sink, new water tap, 5 spotlights, new microwave and has been completely repainted (CNDB)

2017

A large number of underwater planks were changed by local shipwrights in Montenegro, and the bottom taken down to bare wood, and treated. Photos are available to interested parties.

OTHER

One 20ft container accompanies L'Odyssee in use as Portable workshop, spare parts, roller furling, spare sail inventory, teak planks for capping rail, staysail boom, water sport equipment, anchor chain, crew-uniforms, and deck equipment.

16. COMMENTS

L'Odyssee was designed by the well-known French architect F. Camatte and built and launched by "Chantier Navale de Normandie" under her original name L'Odyssee, in 1935. She has sailed extensively around the British and French Coast, the Mediterranean and the Caribbean, with at least 12 Atlantic Crossings to her name.

In 2007 the yacht has been reinstalled to her original sail plan with wooden masts. Since her transformation, she is a much faster yacht in light winds and kept her cruising comfort in strong winds and rough seas. She is a very comfortable yacht built for cruising but can be sailed in regattas for first places as well.

L'Odyssee has been successfully operated as a commercial charter yacht until 2010. At the moment the yacht is registered as a private yacht but could be re-registered as MCA commercial yacht without a lot of extra costs.

The yacht can be sailed with 3 crew members and with the autopilot and roller furling system, the yacht could be sailed and kept by 2 crewmembers. She has the great advantage of a separate engine room, with all mechanical equipment easily accessible.

17. EXCLUSIONS

3 x Paintings in saloon

Exclusions

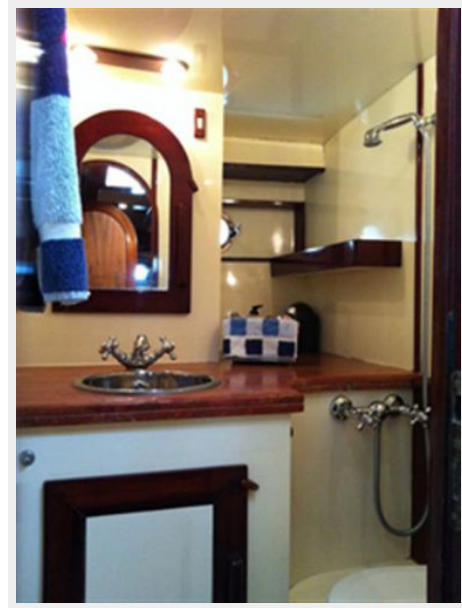
Owner's personal belongings.

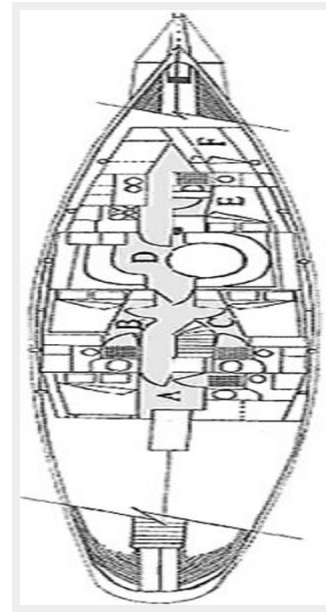
Disclaimer

The Company offers the details of this vessel or yacht in good faith but cannot guarantee or warrant the accuracy of this information nor warrant the condition of the vessel. A buyer should instruct his representatives, agents, or his surveyors, to investigate such details as the buyer desires validated. This vessel or yacht is offered subject to prior sale, price change, or withdrawal without notice.

PHOTOS







CONTACTS

Andrey Shestakov, leading yacht broker of the sales department of Shestakov Yacht Sales Inc. Shestakov Yacht Sales Inc., the official representative of the Miami/Fort Lauderdale FL headquarters.

Contact details

Email: andrey@shestakovyachtsales.com

Web: shestakovyachtsales.com/en/

Telephones

USA: +1(954)274-4435

Office hours

Monday – Saturday: **9:00 - 21:00** EDT

Sunday: **closed**

Address



Harbour Towne Marina, 850 NE 3rd St,
STE 213, Dania, FL 33004