

## DREAM CATCHER — OFFSHORE



**Судостроитель:** OFFSHORE

**Год постройки:** 2006

**Модель:** Моторная яхта

**Цена:** ЦЕНА ЯХТЫ ПО ЗАПРОСУ

**Местонахождение:** United States

**Длина общая:** 62' 0" (18.90m)

**Ширина:** 16' 10" (5.13m)

**Макс. осадка:** 5' 0" (1.52m)

**Крейс. скорость:** 17 Kts. (20 MPH)

**Макс. скорость:** 21 Kts. (24 MPH)

Купить **Dream Catcher — OFFSHORE** а также выбрать подходящую вам яхту из нашего каталога яхт вам поможет опытный яхтенный брокер Андрей Шестаков. На сегодняшний день компания **Shestakov Yacht Sales Inc.** имеет большое количество яхт в собственном списке продаж, а также тесно сотрудничает со всеми крупными яхтенными производителями по всему миру.

Для того чтобы купить яхту **Dream Catcher — OFFSHORE** а также проконсультироваться по любому вопросу связанному с покупкой, продажей, чартером яхт позвоните по телефону **+7(918)465-66-44**.

# ОГЛАВЛЕНИЕ

---

ОГЛАВЛЕНИЕ	2
ХАРАКТЕРИСТИКИ	4
Обзор	4
Основная информация	4
Размеры	4
Скорость, вместимость и масса	4
Размещение	5
Корпус и палуба	5
Информация о двигателе	5
ПОДРОБНОЕ ОПИСАНИЕ	6
Upgrades & Added Equipment	6
Accommodations	6
Galley	7
Pilothouse	7
Flybridge	8
Master Stateroom	8
Master Head	8
VIP Stateroom	8
Guest Stateroom	9
VIP / Guest Head	9
Electronics	9
Mechanical Equipment	9
Electrical Equipment	10
Deck & Hull	10
Aft Deck	10
Exclusions	11
Исключения	11
Отказ от ответственности	11

---

ФОТОГРАФИИ	12
КОНТАКТЫ	16
Контактная информация	16
Телефоны	16
Время работы	16
Адрес	16

# ХАРАКТЕРИСТИКИ

## Обзор

This beautiful captain-maintained Offshore 62 includes bow and stern thrusters, Wesmar stabilizers, 800gpd watermaker, upgraded MAN Common rail 800hp mains, 16kW & 12kW Northern Lights generators, fuel polishing, SAT TV, video camera system, infra-red night-vision system, air conditioned engine room, complete set of canvas covers, underwater lights, plus many other options.

## Основная информация

<b>Тип судна:</b> Моторная яхта	<b>Подкатегория:</b> Pilothouse
<b>Модельный год:</b> 2006	<b>Год постройки:</b> 2006
<b>Страна:</b> United States	<b>Верх:</b> Hardtop
<b>Открытая палуба мостика:</b> Да	<b>Кубрик:</b> Да

## Размеры

<b>Длина общая:</b> 62' 0" (18.90m)	<b>Ширина:</b> 16' 10" (5.13m)
<b>Макс. осадка:</b> 5' 0" (1.52m)	

## Скорость, вместимость и масса

<b>Крейс. скорость:</b> 17 Kts. (20 MPH)	<b>Макс. скорость:</b> 21 Kts. (24 MPH)
<b>Водоизмещение:</b> 65000 Pounds	<b>Вместимость воды:</b> 400 Gallons
<b>Вместимость сточного бака:</b> 85 Gallons	<b>Объем топливного бака:</b> 1000 Gallons

## Размещение

---

Всего кают: 3

Всего коек: 6

Всего ком. состава: 2

## Корпус и палуба

---

Материал корпуса: Fiberglass Sandwich    Комплектация корпуса: Deep Vee

Цвет корпуса: White

Дизайнер корпуса: William Crealock

## Информация о двигателе

---

Двигатели: 2

Производитель: MAN

Модель: R-6-800

Тип двигателя: Inboard

Тип топлива: Diesel

---

# ПОДРОБНОЕ ОПИСАНИЕ

---

## Upgrades & Added Equipment

---

- Compressor and Buell air horns
- 20" Sharp TV
- 2 - 15" Sharp TVs
- 32" Sharp TV
- Salon sub woofer
- 800 GPD watermaker with Auto Flush
- Underwater lights
- 400' Chain and 881bs Delta and chain stopper
- 24,000btu AC in engine room
- Bidet for master head
- Solar vents on swim platform storage areas
- Bilge Buster air purifier
- 1,500 lb davit
- Fuel transfer pump
- 12v and 24v test panels
- Denon receiver, VDV and CD Player
- Speakers on aft deck, FB, PH, master, and salon
- 4 Additional house batteries
- Under-sink RO watermaker
- Fender baskets
- Cockpit steps and step plates
- EPIRB
- Wineglass rack
- Plexiglass chart cover at flybridge
- Spare shaft seals
- Custom interior
- Reverso fuel polishing system
- Frigibar freezer
- Complete set of canvas covers
- All soft goods on all decks redone 6 months ago

## Accommodations

---

Access to the interior of this very well equipped 62' Offshore is via a large sliding FRP and glass door from the aft deck or from the port or starboard wing doors in the pilothouse.

Starting from the spacious aft deck one enters a large beautifully decorated salon area. Forward to port of the main salon is the galley with a granite-topped counter separating the salon and galley. To starboard and up three steps one enters the pilothouse and lower helm area with a

comfortable L settee, chart table, hinged ac/dc electrical panels, 2 Stidd helm chairs and an under counter subzero refrigerator. The flybridge is accessed via a staircase to starboard and aft in the pilothouse. The entire interior is appointed with beautiful teak joinery with satin varnish all accented with inlays.

Custom interior upholstery and upgraded carpets offer further enhancement to the custom nature of this special Offshore 62'.

The main salon features a comfortable U shaped settee to port, a high/low crank cocktail/dinning table with removable end leaves that can easily accommodate six for dining, 4 custom wall sconces, roman shades on all the windows, custom window valances, a 32" Panasonic flat screen T.V. and two upholstered barrel chairs with built-in ottomans that have storage. All salon windows, as well as those throughout are custom tinted. Forward and to starboard one finds an additional built-in cabinet offering a phenomenal sound system with Denon, Sony, and Pioneer equipment, and an abundance of storage. She hosts a three stateroom interior layout with owner's full beam master stateroom with private access staircase starboard side amidships from the main salon. The full size washer and dryer are located at the bottom of the master access stairs. A staircase forward to starboard in the pilothouse gains access to the forward VIP cabin and third guest stateroom to port and the day/guest head with a large shower.

---

## Galley

---

The galley is separated from the main salon by custom cabinetry with raised shelf and storage cabinets above. Facing aft in galley your culinary delights may be prepared on the custom black Granite countertops with recessed Franke sink that has a disposal. Below the countertop, you will find an abundance of storage in cabinets with full extension pull out shelves and Formica lined drawers. Forward one finds an adequately sized counter space with a flush mounted upgraded Miele 220 volt four-burner cook top with fiddles. Just below the cook top is GE full size Profile oven and above is a built-in convection/microwave oven with a built-in exhaust hood. Next to the stove is a full size GE Profile side-by-side refrigerator/freezer with ice and water in the door. The flooring is teak with ebony inlay.

The galley has ample granite counter space and storage cabinets that along with the full extension Formica lined drawers have full extension pull out shelves. There is a full size side-by-side refrigerator with water and ice in the door; trash compactor, 4-burner 220-volt electric cooktop, a real full-size oven and a Franke SS sink with food eradicator.

---

## Pilothouse

---

The Pilothouse features an L-shaped settee aft with a custom high/low table, two Stidd helm seats, Sub Zero refrigerator, overhead hatch, doors to port and starboard to access the wide walk-around side decks and a beautifully appointed command center at the helm. To starboard is an additional storage cabinet with built-in wine cooler. One will find everything needed for

comfortable operation of the vessel as well as comfort at rest.

---

## Flybridge

---

The spacious flybridge is easily accessed from the pilothouse or the large aft deck hatch. A custom hardtop was also added. To starboard is a custom storage cabinet with countertop/bench arrangement housing a fresh-water sink, built-in refrigerator, and icemaker. With cushions on top and a convertible backrest, this makes for a wonderful forward-facing lounging space. To port and aft is a large settee with two teak-trimmed granite pedestal tables. Forward are two Pompanette helm seats at the upper steering station. Located aft is the boat deck and a 14' 5" Scout FRP tender with center console and a 40hp 4-stroke Yamaha, Marquipt 1,500 lb davit, a custom Marquipt stainless fender rack with 7 built-in rod holders, and custom built-in large Frigabar refrigerator/freezer, Zodiac 6 person life raft, and EPIRB.

---

## Master Stateroom

---

The Master Stateroom, amidship and full-beam, hosts an athwart-ship king berth with custom fabric headboard framed in teak. Custom bedding and linens encompass this room's beauty. A custom bookshelf sits above the headboard with reading lamps outboard on both sides and above the built-in nightstands. There is an emergency escape hatch with a drop-down ladder over the bed that opens into the pilothouse. Large cedar-lined hanging lockers (one is full length) fill the aft bulkhead and drawer storage splits the forward bulkhead with mirror above. For entertainment there is a flat-panel 20" Sharp TV, stereo speakers, and a built-in DVD player.

---

## Master Head

---

The ensuite head is located forward and starboard of the entrance door. The head hosts a stall shower forward.

Magnificent custom marble makes up the shower seats and all vanity countertops throughout all heads. Teak soles have holly inlays. Custom teak cabinetry above and below the vanity allow for an abundance of storage for all sundries. Both master and guest heads are serviced by a Head Hunter system with the master head featuring a bidet.

---

## VIP Stateroom

---

The VIP Guest Stateroom is down and forward from the pilothouse and hosts a queen walk-around berth on centerline with built-in drawer storage and cedar-lined hanging lockers on port and starboard. There is additional storage on both sides forward of the hanging lockers. The built-in 15" Sharp flat screen TV is located starboard on the aft bulkhead.



---

## Guest Stateroom

---

The third stateroom is located on the port side and aft of the VIP and hosts single upper and lower berths. The built-in 15" Sharp flat screen TV is located starboard and forward. There is ample hanging locker and drawer storage.

---

## VIP / Guest Head

---

The guest head is shared by both forward cabins and is easily accessed through the forward walkway making easy access for a day head. A stall shower with a custom marble seat is flanked by a well-appointed custom marble vanity with storage above and to the sides.

---

## Electronics

---

- Furuno 72 N.M. 6' Open Radar
- Furuno APR11 Board
- Furuno Network Sounder 50/200 KHZ Transducer
- Furuno Fax 30 Weather Receiver
- 3 Furuno Rd-30 Repeaters
- 2 Furuno 15" Color Monitor
- 2 Furuno 1920 VX2 Nav Black Box Chart Plotters
- Furuno 235 KHZ Transducer
- KVH Trac 4
- Digital 4000 Cell Phone AMP and Antenna
- Simrad AP25 Autopilot with Remote FB
- Simrad Second (Backup) Autopilot
- Simrad Wind System
- GPS wiring for use with laptop
- FLUR - Infrared/Night vision system
- CCTV System with 3 Cameras
- Furuno 12" Color Monitor
- Interphase Twin Scope forward looking sonar
- Lightning Prevention System
- Furuno AIS
- Furuno Weather Black Box
- Furuno 2nd 12" Screen on flybridge as space will permit
- Iridium Sat. Phone Antenna wired to Pilothouse
- Windlass Counter
- Interphase is forward looking sonar
- Bennett Trim Tabs

---

## Mechanical Equipment

---

- Wesmar stabilizers with digital controls
- Stern thruster
- Upgraded dual-prop Wesmar bow thruster
- Hynautic power steering with second backup pump
- Underwater exhaust system
- Fuel/water separators for main engines and generator
- Air-conditioning: 6K BTU (5 Compressors, 2 x 16K btu, 2 x 12K btu, and 1 x 9K btu)
- Sport deck bilge pump
- Dockside water connection with pressure regulator for ships water system
- Reverso gear driven oil change system for main engines, transmissions and both generators
- 316 stainless new & waste oil tanks approx. 15gal each capacity

---

## Electrical Equipment

---

- 16kW Northern Lights generator
- 12kW Northern Lights generator
- 120 VAC and 220 VAC 50amp shore power system with receptacles on foredeck
- Two 50amp shore power cords
- 12v 40amp Newmar smart charger
- 24volt Newmar smart charger
- 3000watt inverter/charger wired to AC panel

---

## Deck & Hull

---

The Aft Deck has an aft station with engine controls, bow/stern thruster controls, rudder position indicator, and steering, as well as VEl cameras offering a full aft view that makes docking easy.

The hull coloring is "Offshore White," with contrasting tan low-glare, molded-in, non-skid decking and a green boot stripe. The 3-foot optional boat deck extension with stiffener beam and rail at boat deck hatch to cockpit ladder was also added. Fresh/salt/hot/cold water hook-up and wash-down, two aft deck plugs, 50amp power cords, TV/telephone hook-up, underwater lights, tons of storage under swim platform, two engine room cameras, and removable Rupp outriggers. There is a seat on the forward deck and port/starboard midship boarding gates.

---

## Aft Deck

---

Enter via custom step plates and down the Marquipt movable step to the aft deck. On the port side, one finds an electric BBQ, stainless icemaker, deep sink with hot & cold fresh water, and a storage area. On the starboard side is the ladder to the boat deck and an aft control station with bow/stern thruster and engine controls, rudder indicator, helm wheel, and a forward looking video screen. There are two storage compartments, dive tank rack, and transom door to a very large

swim platform that also has wet storage and an integral swim ladder.

Engine room access is from a hatch just aft of the salon door or through the lazarette plus an emergency exit in the galley floor.

---

## Exclusions

---

All owner & personal items Boston Whaler Dinghy

A detailed list of exclusions to be provided at time of sale upon written request.

---

## Исключения

---

При продаже яхты исключаются личные вещи владельца.

---

## Отказ от ответственности

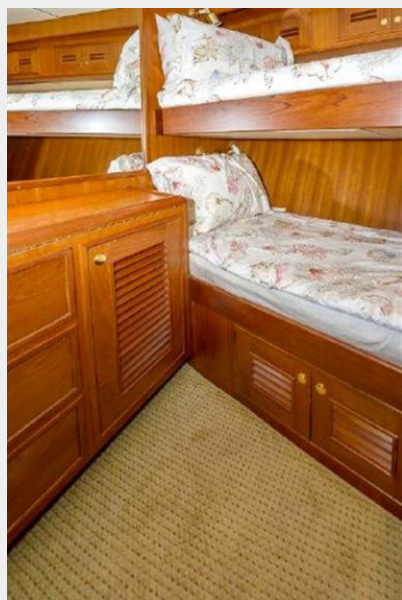
---

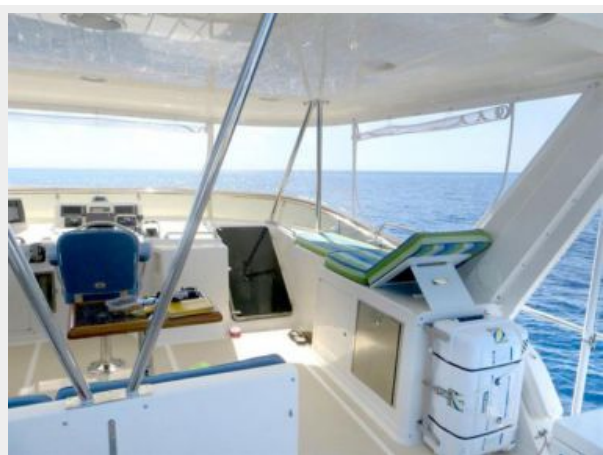
Компания предоставляет описание судна или яхты добросовестно, но не может гарантировать точность этой информации, а также не ручается за техническое состояние. Покупатель должен проинструктировать своих агентов или оценщиков исследовать представленную информацию более подробно, по собственному желанию. Продажа судна или яхты, изменение цены или снятие с продажи будет происходить без предварительного уведомления.

# ФОТОГРАФИИ

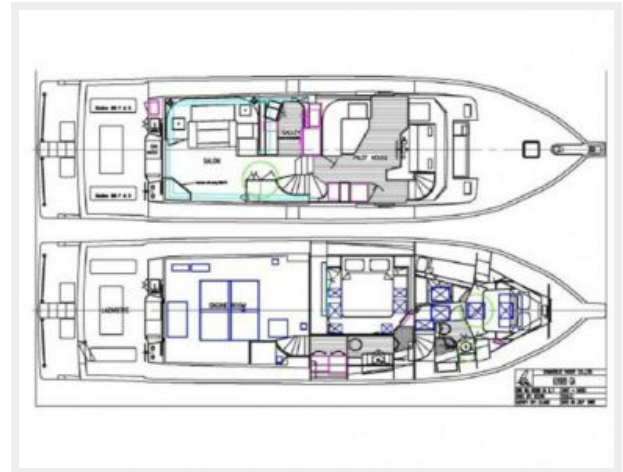












# КОНТАКТЫ

---

Андрей Шестаков (Andrey Shestakov) – ведущий яхтенный брокер отдела продаж яхт и судов компании Shestakov Yacht Sales Inc. Официальный представитель Shestakov Yacht Sales Inc. для русскоговорящих клиентов в центральном офисе компании в Майами/Форт Лодердейл/Флорида/США.

## Контактная информация

---

Email: **andrey@shestakovyachtsales.com**

Web: [shestakovyachtsales.com](http://shestakovyachtsales.com)

## Телефоны

---

Краснодарский край: **+7(918)465-66-44**

США, Майами, Флорида: **+1(954)274-4435**

## Время работы

---

Понедельник – Суббота: **9:00 - 21:00**  
EDT

Воскресенье: **Закрито**

## Адрес

---



Harbour Towne Marina, 850 NE 3rd St,  
STE 213, Dania, FL 33004