

ITASCA — J&K SMIT



Судостроитель: J&K SMIT

Год постройки: 1961

Модель: SHELBY

Цена: **ЦЕНА ЯХТЫ ПО ЗАПРОСУ**

Местонахождение: United States

Длина общая: 175' 11" (53.60m)

Ширина: 34' 10" (10.60m)

Мин. осадка: 17' 1" (5.20m)

Крейс. скорость: 11 Kts. (13 MPH)

Макс. скорость: 12 Kts. (14 MPH)

Купить **ITASCA — J&K SMIT** а также выбрать подходящую вам яхту из нашего каталога яхт вам поможет опытный яхтенный брокер Андрей Шестаков. На сегодняшний день компания **Shestakov Yacht Sales Inc.** имеет большое количество яхт в собственном списке продаж, а также тесно сотрудничает со всеми крупными яхтенными производителями по всему миру.

Для того чтобы купить яхту **ITASCA — J&K SMIT** а также проконсультироваться по любому вопросу связанному с покупкой, продажей, чартером яхт позвоните по телефону **+7(918)465-66-44**.

ОГЛАВЛЕНИЕ

| | |
|--------------------------------------------------------------------|----|
| ОГЛАВЛЕНИЕ | 2 |
| ХАРАКТЕРИСТИКИ | 5 |
| Обзор | 5 |
| Основная информация | 5 |
| Размеры | 5 |
| Скорость, вместимость и масса | 5 |
| Размещение | 6 |
| Корпус и палуба | 6 |
| Информация о двигателе | 6 |
| ПОДРОБНОЕ ОПИСАНИЕ | 7 |
| ITASCA Specification | 7 |
| Исключения | 12 |
| Отказ от ответственности | 12 |
| ФОТОГРАФИИ | 13 |
| 3_180712_ITASCA_Sun deck lounge_Hi-1262-credit Quin BISSET | 13 |
| 2_profile ice | 13 |
| 4_180712_ITASCA_Sun deck lounge_Hi-1245-credit Quin BISSET | 13 |
| 5_180712_Sun deck lounge_ITASCA_Hi-1064-credit Quin BISSET | 13 |
| 6_180712_ITASCA_Master stateroom_Hi--credit Quin BISSET-2 | 13 |
| 7_180712_ITASCA_Owner's area_Hi--credit Quin BISSET-3 | 13 |
| 16_ITASCA Complete Spec 30SEP15 VF_Page_09_Image_0001 | 14 |
| 8_180712_ITASCA_Hi_Main deck living room_0098-credit Quin BISSET | 14 |
| 10_180712_ITASCA_Guest stateroom_Hi-0039-credit Quin BISSET | 14 |
| 9_180712_ITASCA_Dining area_Hi-0094-credit Quin BISSET | 14 |
| 11_180712_ITASCA_ITASCA_Guests Bathroom_Hi-0035-credit Quin BISSET | 14 |
| 12_180712_ITASCA_Guest stateroom_Hi--credit Quin BISSET | 14 |
| 13_180712_ITASCA_Guests Bathroom_Hi-1405-credit Quin BISSET | 15 |
| 14_180712_ITASCA_Guest stateroom_Hi-0058-credit Quin BISSET | 15 |

| | |
|--------------------------------------------------------------------------|----|
| 15_180712_ITASCA_Guests Bathroom_Hi-0026-credit Quin BISSET | 15 |
| 17_ITASCA Complete Spec 30SEP15 VF_Page_15_Image_0002 | 15 |
| 18_ITASCA Complete Spec 30SEP15 VF_Page_17_Image_0001 | 15 |
| 19_180712_ITASCA_Gym_Hi-1039-credit Quin BISSET | 15 |
| 20_180712_ITASCA_Sauna_Hi-0067-credit Quin BISSET | 16 |
| 21_180712_ITASCA_Galley_Hi-1281-credit Quin BISSET | 16 |
| 22_180712_ITASCA_Engine room_Hi-1309-credit Quin BISSET | 16 |
| 23_180712_ITASCA_Engine room_Hi-1331-credit Quin BISSET | 16 |
| 25_ITASCA_Hi-0026-credit Quin BISSET-2_HR | 16 |
| 24_180712_ITASCA_Wheelhouse_Hi-1292-credit Quin BISSET | 16 |
| 26_180712_ITASCA_Top deck_Lo_Hi-0965-credit Quin BISSET | 17 |
| 27_180712_ITASCA_Top deck_Lo_Hi-0964-credit Quin BISSET | 17 |
| 28_180712_ITASCA_Sun deck aft seating_Hi-0531-credit Quin BISSET | 17 |
| 29_180712_ITASCA_Sun deck exterior aft dining_Hi-0538-credit Quin BISSET | 17 |
| 30_180712_ITASCA_Bow_Hi-0483-credit Quin BISSET | 17 |
| 31_180712_ITASCA_Bow_Hi-0037-credit Quin BISSET | 17 |
| 32_180712_ITASCA_Exterior aft_Hi-0300-credit Quin BISSET | 18 |
| 34_Svalbard (99) | 18 |
| 36_180712_ITASCA_ITASCA_Port side_Hi-0490-credit Quin BISSET | 18 |
| 35_21 aug 003 | 18 |
| 37_ITASCA_Hi-0222-credit Quin BISSET_HR | 18 |
| 38_ITASCA_Hi-0316-credit Quin BISSET_HR | 18 |
| 40_180712_ITASCA_Hi-09357-credit Quin BISSET | 19 |
| 39_ITASCA_Hi-0331-credit Quin BISSET_HR_C | 19 |
| 25_ITASCA_Hi-0026-credit Quin BISSET-2_HR | 19 |
| 15_180712_ITASCA_Guests Bathroom_Hi-0026-credit Quin BISSET | 19 |
| 33_Itasca | 20 |
| 36_180712_ITASCA_ITASCA_Port side_Hi-0490-credit Quin BISSET | 20 |
| 37_ITASCA_Hi-0222-credit Quin BISSET_HR | 20 |

| | |
|----------------------------------------------|-----------|
| 38_ITASCA_Hi-0316-credit Quin BISSET_HR | 20 |
| 40_180712_ITASCA_Hi-09357-credit Quin BISSET | 21 |
| 39_ITASCA_Hi-0331-credit Quin BISSET_HR_C | 21 |
| 41_GA ITASCA | 21 |
| КОНТАКТЫ | 22 |
| Контактная информация | 22 |
| Телефоны | 22 |
| Время работы | 22 |
| Адрес | 22 |

ХАРАКТЕРИСТИКИ

Обзор

ITASCA was originally built in 1961 as an ocean-going tug by J&K Smit of the Netherlands. Known as THAMES III she was in commercial service until 1979. The conversion to a private yacht was undertaken by new owners, an American family, who renamed her "ITASCA". She is one of three built with only ITASCA still in existence. ITASCA's conversion has been very tastefully completed over the years with each owner adding and improving her to make her what she is today. She is a country home on the water with large windows and all amenities, including large gym and sauna.

Основная информация

| | |
|---------------------------------|---------------------------------|
| Тип судна: SHELBY | Подкатегория: Conversion |
| Модельный год: 1961 | Год постройки: 1961 |
| Год обновления: 2017 | Страна: United States |
| Вертолетная площадка: Да | |

Размеры

| | |
|---------------------------------------|---------------------------------|
| Длина общая: 175' 11" (53.60m) | Ширина: 34' 10" (10.60m) |
| Мин. осадка: 17' 1" (5.20m) | |

Скорость, вместимость и масса

| | |
|----------------------------------------------|----------------------------------------------------|
| Крейс. скорость: 11 Kts. (13 MPH) | Дальность на крейсерской скорости: 13000 |
| Макс. скорость: 12 Kts. (14 MPH) | Чистый вес: 845 Pounds |
| Вместимость воды: 9774.365924 Gallons | Объем топливного бака: 71854.798144 Gallons |
| Расход топлива: 1452.946286 Gallons | |

Размещение

Всего кают: 5

Спальные места: 10

Спальных мест экипажа: 13

Корпус и палуба

Материал корпуса: Steel

Материал палубы: Teak

Цвет корпуса: Blue

Дизайнер корпуса: J. & K. Smits
Scheepswerven N.V

Дизайнер экстерьера: J. & K. Smits
Scheepswerven N.V

Информация о двигателе

Двигатели: 2

Производитель: MAN

Модель: Rabl 459, 9V

Тип топлива: Diesel

ПОДРОБНОЕ ОПИСАНИЕ

ITASCA Specification

1. MAIN CHARACTERISTICS

| | |
|-----------------------------|----------------------------------------------------------------------------------------------------------------------------------------------------------------------------------------------------------------------------------------------------------------------------------------------------------------------------|
| TYPE | <ul style="list-style-type: none"> ◦ Luxury Explorer Pleasure Yacht |
| HELIPAD | <ul style="list-style-type: none"> ◦ BC130 B4 - upper deck aft (approved by Class in 2011} |
| BUILDER | <ul style="list-style-type: none"> ◦ J&K Smit, The Netherlands (1 of 3 sister ships) |
| OFFICIAL NUMBER | <ul style="list-style-type: none"> ◦ 384738 |
| IMO NUMBER | <ul style="list-style-type: none"> ◦ 1002055 |
| TYPE OF REGISTRATION | <ul style="list-style-type: none"> ◦ Pleasure Vessel |
| VHF CALL SIGN | <ul style="list-style-type: none"> ◦ ZGHI |
| YEAR | <ul style="list-style-type: none"> ◦ 1961 ◦ 2017 / 2010 / 2000 / 1994 ◦ 1994: First Owners built the superstructure & ice strengthened the Hull |
| REFIT | <ul style="list-style-type: none"> ◦ 2000: Second Owner rebuilt the interior ◦ 2010: Current Owner added the stern thruster in Seattle & upgraded the Helideck to include refueling in Auckland 2011 ◦ 2017: Hull repainted, shaft pulled & 5 year special class survey completed |
| CLASSIFICATION | <ul style="list-style-type: none"> ◦ Lloyd's + 100 A1 LMC, ISM Code, ISPS compliant, MCA LY3 |
| CONSTRUCTION | <ul style="list-style-type: none"> ◦ Steel Hull & Superstructure, Teak deck |
| FLAG | <ul style="list-style-type: none"> ◦ Cayman Islands, George Town |
| ENGINES | <ul style="list-style-type: none"> ◦ 2 x 1,250 Hp MAN – single screw (build in 1961) |
| CREW | <ul style="list-style-type: none"> ◦ 12 + Pilot for helicopter |
| GT | <ul style="list-style-type: none"> ◦ 845 |
| NT | <ul style="list-style-type: none"> ◦ 253 |
| HULL COLOUR | <ul style="list-style-type: none"> ◦ Blue |
| ACCOMMODATION COLOUR | <ul style="list-style-type: none"> ◦ White |

2. DIMENSIONS

| | |
|--------------|----------------------------------------------------------------------|
| LOA | <ul style="list-style-type: none"> ◦ 53.60m / 175'10" |
| BEAM | <ul style="list-style-type: none"> ◦ 10.60m / 34'9" |
| DRAFT | <ul style="list-style-type: none"> ◦ 5.20m / 17' |

3. SPEED & RANGE UNDER POWER

| | |
|----------------------|----------------------------------------------------------------|
| MAXIMUM SPEED | <ul style="list-style-type: none"> ◦ 11.5 knots |
|----------------------|----------------------------------------------------------------|

CRUISING SPEED ○ 11 knots

FUEL CONSUMPTION ○ 5,500 litres / 24 hours steaming

○ 13,000nm

RANGE ○ 7,500nm at 11.2 knots @ 168 shaft rpm

○ (about 360 rpm on the ME)

4. CAPACITIES

ACCOMMODATION ○ 10 x Guests in 5 cabins

CREW ○ 12 x Crew + 1 helicopter pilot

FUEL ○ 272,000 litres / 71,855 US gallons

HELI FUEL ○ 5,000 litres / 1,320 US gallons

FRESH WATER ○ 37,000 litres / 9,775 US gallons

BLACK WATER ○ 14,949 litres / 3,896 US gallons

5. ACCOMMODATION

ITASCA's conversion has been very tastefully completed over the years with each owner adding and improving her to make her what she is today. She is a country home on the water with large windows and all amenities, including large gym and sauna.

6. HELIPAD

HELIPAD

- EC130 B4 on the upper deck aft
- The Helideck structure was approved by Class in 2011. Flag requirements for Helicopter landing areas and operations are only applicable to commercial yachts (2,400kg max take-off weight).

HELICOPTER NB:

- The helicopter is not included in the asking price

7. MECHANICAL EQUIPMENT

ENGINES ○ 2 x 1,250 Hp MAN Rabl 459, 9V, Diesel (1961)

ENGINE HOURS ○ As of Jan 2021 - since circa 1994:

○ Port: 18,833 / Stbd: 18,961

PROPULSION ○ Single screw

GEARBOX ○ Lohmann and Stolterfoht

REDUCTION RATIO ○ 2.22: 1 with maximum shaft speed of 180 rpm

ELECTRICITY ○ 480V / 100 Amp – 110v (60 Hertz) domestic supply

BATTERIES ○ 2 x Banks of 24V - 8 Batteries in total (plus GMDSS)

GENERATORS ○ 2 x 190kW Caterpillar 3406B built in 1995

HARBOUR GENERATOR

- 1 x 170kW Caterpillar 3306 built in 1999

GENERATOR HOURS

- As of Jan 2021 - since last complete rebuild
- Port 3406: 9,367 / Stbd 3406: 4,023
- Night Gen. 3306: 6,828 since last complete rebuild

EMERGENCY

- 1 x 25kW Northern Lights NL984 (New 2005)

**GENERATOR
EMERGENCY GEN.
HOURS**

- 30.5 hours (Jan 2021)

AIR CONDITIONING

- Local fan coils in each cabin / area –
- 2 x Blitzer 4N-20.2 compressors / 340'00 BTU – Heinen & Hopman main air handler

**STERN
THRUSTERS**

- Wesmar V2 – 24/26 150 kW (electric)

BOW THRUSTERS

- Wesmar DPC – 200 150 kW (electric)

FUEL FILTRATION

- Alfa Laval MAB-104B

BILGE SYSTEM

- Heli – Sep / Model 500 - J1838

SEWAGE SYSTEM

- Hamann Wassertechnik

STEERING SYSTEM

- Stork Jaffa - Hydraulic – Twin Rams

WATER MAKERS

- 2 x H.E.M. 40 9000 - (15,000 per day each)

DIVE COMPRESSOR

- Bauer C-E3

8. MACHINERY USE NOTES

- Underway ITASCA uses only 1 main engine & 1 generator, the 2 main engines are never used together
- Fuel consumption underway at 11+ knots (1 ME & 1 generator) averages 4,800 litres per 24 hours
- At anchor or alongside only 1 generator is required
- Itasca's main engines are medium speed (380rpm max) commercial style engines which do not fall into modern "service by the hour" schedules as you would find with Caterpillar, MTU, etc. They are typically under constant maintenance and go for years between large rebuilds. Also, as only one is used at a time means 10,000 individual engine hours is actually 20,000 hours underway

9. NAVCOM EQUIPMENT

SATELLITE

- TVRO, VSAT
- Fleet Broad Band
- Iridium Open Port
- SAT C

**SATELLITE
COMPASS**

- Furuno SC-110

SONAR

- Furuno Dual Frequency CH-300

AUTO PILOT

- 2 x Simrad AP80's both fully integrated

GPS

- 2 x Simrad MX612 both fully integrated

GYRO COMPASS

- 1 x Simrad GC80

TOUCH SCREENS

- 3 x Hatteland 19"

VHF

- 1 x Simrad RS90 with 3 slave units
- Pepwave MAX-TST-DUO-US-T - with 2 Antennas -

- CELL DATA ROUTER** AX50W
- AIS**
 - Furuno FA-150
- CCTV**
 - 4 Pelco Cameras, 2 PAL, 2 NTSC
- DEPTH SOUNDER**
 - Furuno FE-700
- NAVTEX**
 - Furuno NX-500
- RADARS**
 - Furuno X-Band FR-2125
 - Furuno S-Band FR-2137S
- RUDDER INDICATOR**
 - Jastram
- 10. DECK EQUIPMENT**
 - ANCHORS**
 - 2 x Anchors – 1.3t each
 - ANCHOR CHAINS**
 - PT chain 5 shackles, STBD 6 shackles
 - ANCHOR WINDLASS**
 - 1 x Electric 220V DC
 - CAPSTAN**
 - 1 x Electric 220V DC
 - STEERING PUMPS**
 - 2 x Teco electric & Mach AEEB
 - CRANE**
 - 2 x Thringe & Titan SRW 10-22 Cranes – SWL 3 tons (depending on how they are rigged)
- 11. GALLEY & LAUNDRY EQUIPMENT**
 - BRIDGE DECK PANTRY**
 -
 - Fridge
 - Avanti drinks fridge
 - Fridge
 - Cool-Tec Walk In
 - Freezer
 - Turbo Air MSF-23NM
 -
 - MAIN GALLEY**
 - Oven
 - Hobart EC02D-11
 - Microwave
 - Panasonic NN-SD681S
 - Dishwasher
 - 2 x Hobart LX3011
 - Fridge
 - Gorenjie R6164W
 - Freezer
 -
 - CREW GALLEY & MESS**
 - Maytag RTT1700
 - Microwave
 - Panasonic NN-SU686S

- Dishwasher
- Hobart LX3011

LAUNDRY

- 3 x Miele PT 6065 Plus LP washing machines
- 2 x Miele PT 7136 Plus dryers

1. SAFETY & FIRE PROTECTION

- Novec 1230 fire suppression in the Engine room
- Life rafts
- Fire extinguishers

2. TENDER & WATERSPORT EQUIPMENT

- 28ft Rayglass RIB with cabin - 1999
- 25ft Rayglass RIB with center consol - 2000
- 2 x 18ft Zodiacs MK5-HD. Standard tender (blue/black) - 1999

There are extensive tenders and toys including 2 x Protector ribs, Zodiac craft and more. Her highlight though is her helicopter pad where there is also the benefit of a re-fuelling system which allows her Eurocopter BC130 B4 helicopter (not included in the sales price) to give her unrivaled experience and view of the world.

1. COMMENTS

ITASCA was originally built in 1961 as an ocean-going tug by J&K Smit of the Netherlands. Known as THAMES III she was in commercial service until 1979. The conversion to a private yacht was undertaken by new owners, an American family, who renamed her "ITASCA". She is one of three built with only ITASCA still in existence.

Between 1982 and 1993 she cruised mainly on the west coast of Central and North America. In 1994 the same owners refitted and re-equipped ITASCA from bow to stern giving the accommodation a luxurious feel.

In 1994 she made history as the first motor yacht of her kind to complete a 23 day voyage from west to east through the Northwest Passage when owned by the former US Secretary of the Treasury, William E. Simon. Four months later ITASCA was plowing through the treacherous waters of "Drake's Passage" to Antarctica. During her time there she rounded Cape Horn three times. From Antarctica ITASCA set course for New Zealand and Polynesia.

In 12 months ITASCA had conquered the oceans at the top and bottom of the world and travelled 30,000 miles. Her hull is structurally reinforced and equipped to Lloyds highest standards for her encounters with polar ice making her a very safe boat to travel on.

With a vast range of 13,000 nautical miles powered by the option of two MAN's to a single screw, she has excellent back up and ship-like economical operation. Thoroughly well

maintained, ITASCA is fully in class, Lloyds +100 A1 LMC and Charter compliant although she has only been enjoyed privately.

She has been around the world three times and been owned by three different families including the present owners who bought her in 2007. ITASCA has since been upgraded to include bow thrusters and stern thrusters.

ITASCA is a truly magnificent yacht, excellent at sea and capable of weathering the extremes. For people who really want an adventure and to explore our amazing planet, ITASCA has done it and will do it again in the utmost style which cannot be matched!

Исключения

При продаже яхты исключаются личные вещи владельца.

Отказ от ответственности

Компания предоставляет описание судна или яхты добросовестно, но не может гарантировать точность этой информации, а также не ручается за техническое состояние. Покупатель должен проинструктировать своих агентов или оценщиков исследовать представленную информацию более подробно, по собственному желанию. Продажа судна или яхты, изменение цены или снятие с продажи будет происходить без предварительного уведомления.

ФОТОГРАФИИ

2_profile ice



3_180712_ITASCA_Sun deck lounge_Hi-1262-credit Quin BISSET



4_180712_ITASCA_Sun deck lounge_Hi-1245-credit Quin BISSET



5_180712_Sun deck lounge_ITASCA_Hi-1064-credit Quin BISSET



6_180712_ITASCA_Master stateroom_Hi-credit Quin BISSET-2



7_180712_ITASCA_Owner's area_Hi-credit Quin BISSET-3



16_ITASCA Complete Spec 30SEP15
VF_Page_09_Image_0001



8_180712_ITASCA_Hi_Main deck living
room_0098-credit Quin BISSET



9_180712_ITASCA_Dining area_Hi-0094-
credit Quin BISSET



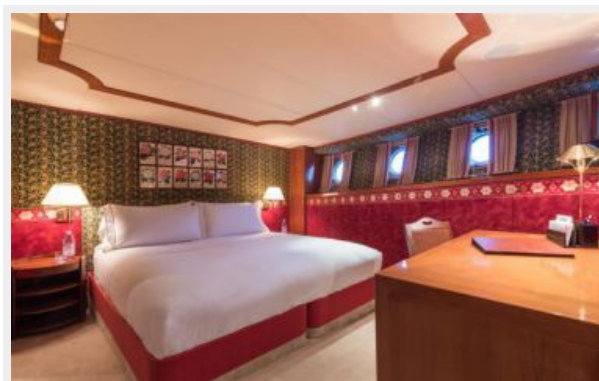
10_180712_ITASCA_Guest stateroom_Hi-
0039-credit Quin BISSET



11_180712_ITASCA_ITASCA_Guests
Bathroom_Hi-0035-credit Quin BISSET



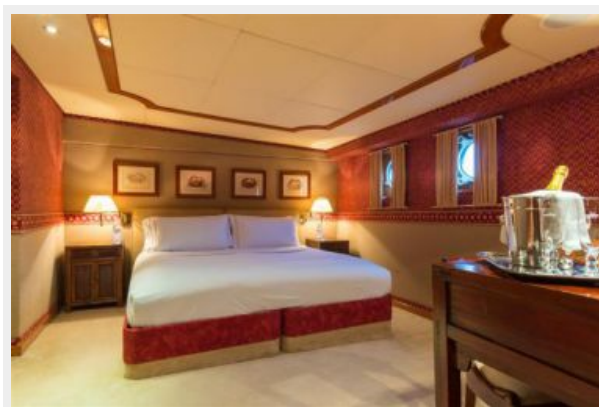
12_180712_ITASCA_Guest stateroom_Hi-
credit Quin BISSET



13_180712_ITASCA_Guests Bathroom_Hi-1405-credit Quin BISSET



14_180712_ITASCA_Guest stateroom_Hi-0058-credit Quin BISSET



15_180712_ITASCA_Guests Bathroom_Hi-0026-credit Quin BISSET



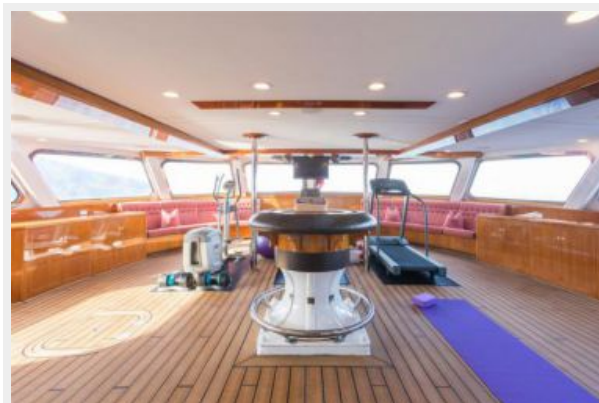
17_ITASCA Complete Spec 30SEP15 VF_Page_15_Image_0002



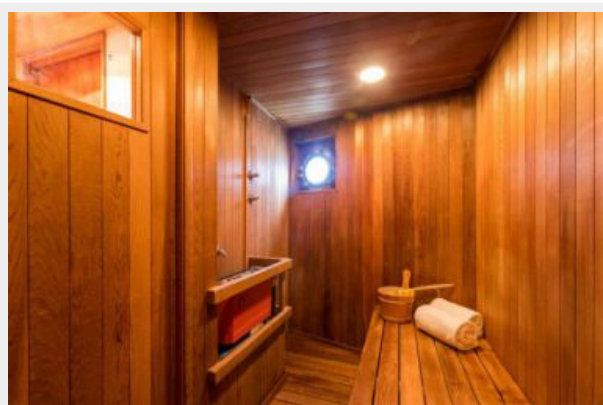
18_ITASCA Complete Spec 30SEP15 VF_Page_17_Image_0001



19_180712_ITASCA_Gym_Hi-1039-credit Quin BISSET



20_180712_ITASCA_Sauna_Hi-0067-credit
Quin BISSET



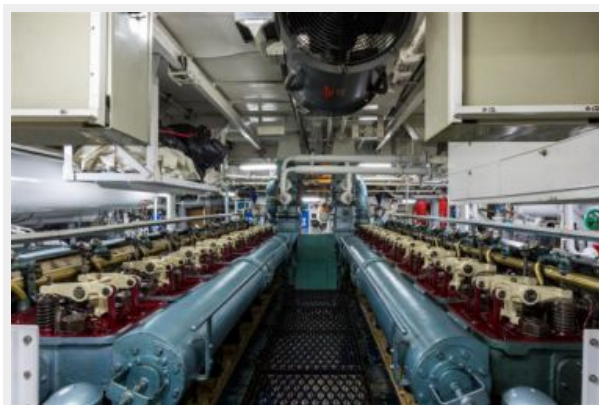
21_180712_ITASCA_Galley_Hi-1281-credit
Quin BISSET



22_180712_ITASCA_Engine room_Hi-1309-
credit Quin BISSET



23_180712_ITASCA_Engine room_Hi-1331-
credit Quin BISSET



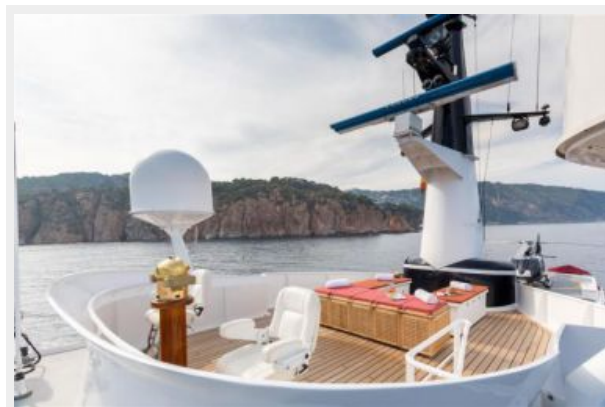
24_180712_ITASCA_Wheelhouse_Hi-1292-
credit Quin BISSET



25_ITASCA_Hi-0026-credit Quin BISSET-
2_HR

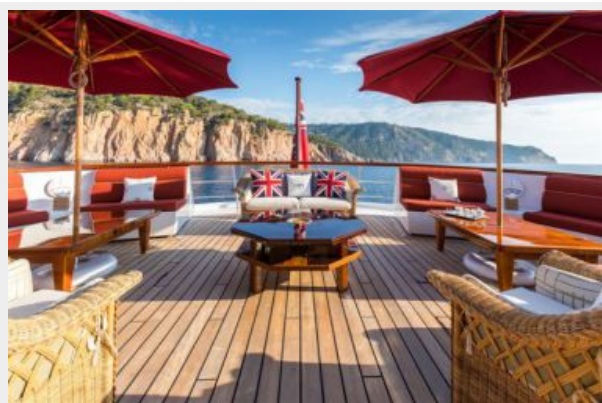


26_180712_ITASCA_Top deck_Lo_Hi-0965- credit Quin BISSET **27_180712_ITASCA_Top deck_Lo_Hi-0964- credit Quin BISSET**



28_180712_ITASCA_Sun deck aft seating_Hi-0531-credit Quin BISSET

29_180712_ITASCA_Sun deck exterior aft dining_Hi-0538-credit Quin BISSET



30_180712_ITASCA_Bow_Hi-0483-credit Quin BISSET

31_180712_ITASCA_Bow_Hi-0037-credit Quin BISSET



32_180712_ITASCA_Exterior aft_Hi-0300-credit Quin BISSET



34_Svalbard (99)



35_21 aug 003



36_180712_ITASCA_ITASCA_Port side_Hi-0490-credit Quin BISSET



37_ITASCA_Hi-0222-credit Quin BISSET_HR



38_ITASCA_Hi-0316-credit Quin BISSET_HR



**39_ITASCA_Hi-0331-credit Quin
BISSET_HR_C**



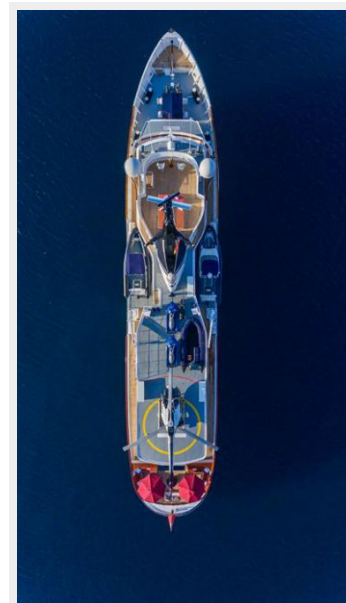
**40_180712_ITASCA_Hi-09357-credit Quin
BISSET**



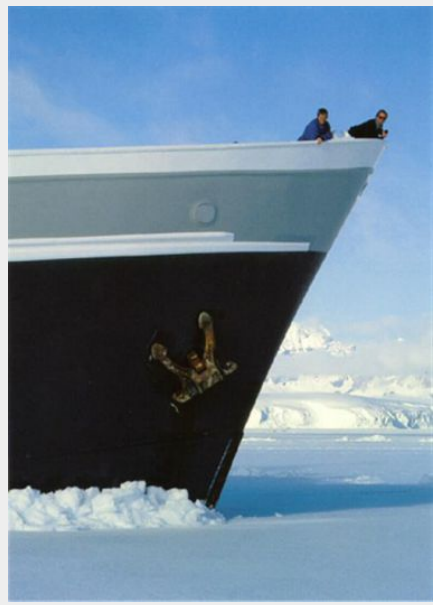
**15_180712_ITASCA_Guests Bathroom_Hi-
0026-credit Quin BISSET**



**25_ITASCA_Hi-0026-credit Quin BISSET-
2_HR**



33_Itasca



36_180712_ITASCA_ITASCA_Port side_Hi-0490-credit Quin BISSET



37_ITASCA_Hi-0222-credit Quin BISSET_HR



38_ITASCA_Hi-0316-credit Quin BISSET_HR



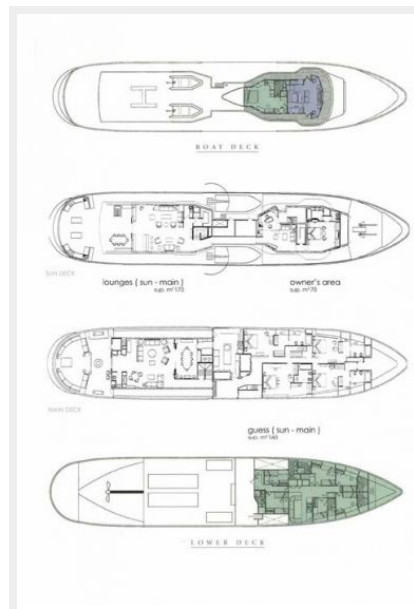
**39_ITASCA_Hi-0331-credit Quin
BISSET_HR_C**



**40_180712_ITASCA_Hi-09357-credit Quin
BISSET**



41_GA ITASCA



КОНТАКТЫ

Андрей Шестаков (Andrey Shestakov) – ведущий яхтенный брокер отдела продаж яхт и судов компании Shestakov Yacht Sales Inc. Официальный представитель Shestakov Yacht Sales Inc. для русскоговорящих клиентов в центральном офисе компании в Майами/Форт Лодердейл/Флорида/США.

Контактная информация

Email: andrey@shestakovyachtsales.com

Web: shestakovyachtsales.com

Телефоны

Краснодарский край: **+7(918)465-66-44**

США, Майами, Флорида: **+1(954)274-4435**

Время работы

Понедельник – Суббота: **9:00 - 21:00**
EDT

Воскресенье: **Закрито**

Адрес



Harbour Towne Marina, 850 NE 3rd St,
STE 213, Dania, FL 33004