

ABSOLUTE MUST SEE!! — AZIMUT



Builder: AZIMUT

Year Built: 2008

Model: Cruiser

Price: PRICE ON APPLICATION

Location: United States

LOA: 62' 0" (18.90m)

Beam: 16' 1" (4.90m)

Max Draft: 5' 0" (1.52m)

Cruise Speed: 30 Kts. (35 MPH)

Max Speed: 37 Kts. (43 MPH)

Our experienced yacht broker, Andrey Shestakov, will help you choose and buy a yacht that best suits your needs **ABSOLUTE MUST SEE!! — AZIMUT** from our catalogue. Presently, at Shestakov Yacht Sales Inc., we have a wide variety of yachts available on our sale's list. We also work in close contact with all the big yacht manufacturers from all over the world.

If you would like to buy a yacht **ABSOLUTE MUST SEE!! — AZIMUT** or would like help answering any questions concerning purchasing, selling or chartering a yacht, please call **+1(954)274-4435**

TABLE OF CONTENTS

| | |
|------------------------------|----|
| TABLE OF CONTENTS | 2 |
| SPECIFICATIONS | 5 |
| Basic Information | 5 |
| Dimensions | 5 |
| Speed, Capacities and Weight | 5 |
| Accommodations | 5 |
| Hull and Deck Information | 5 |
| Engine Information | 6 |
| DETAILED INFORMATION | 7 |
| Key Features To Consider | 7 |
| Aft Deck | 7 |
| Main Salon | 7 |
| Pilot House | 8 |
| Galley | 8 |
| Lower Guest Lounge | 8 |
| Master Stateroom | 9 |
| VIP Stateroom | 9 |
| Crew Quarters | 9 |
| Deck Equipment | 10 |
| Engine Room | 10 |
| Remarks | 11 |
| EXCLUSIONS | 11 |
| Exclusions | 11 |
| Disclaimer | 11 |
| PHOTOS | 12 |
| Azimut Detail | 12 |
| Stern | 12 |
| Aft View | 12 |

| | |
|---------------------------------|----|
| Aft Deck | 12 |
| Aft Deck Sunpad and Lounge | 12 |
| Aft Deck Electrical Panel | 12 |
| Aft Deck BBQ, Sink and Icemaker | 13 |
| Bow Sunpad | 13 |
| Sunroof Open | 13 |
| Radar and SAT TV | 13 |
| Bow Sunpad with Back Rest | 13 |
| Bow | 13 |
| Aft Deck Doors Closed | 14 |
| Aft Deck Doors Open | 14 |
| Main Salon Forward | 14 |
| Main Salon Couch | 14 |
| Main Salon Forward | 14 |
| Main Salon Sunroof Open | 14 |
| Pilot House | 15 |
| Pilot House | 15 |
| Helm | 15 |
| Main Salon Above View | 15 |
| Lower Guest Lounge | 15 |
| Lower Guest Lounge | 15 |
| Galley | 16 |
| Lower Guest Lounge LED TV | 16 |
| New Galley Refrigerator | 16 |
| Galley | 16 |
| Galley | 17 |
| VIP Sateroom | 17 |
| VIP Sateroom | 17 |
| VIP Sateroom | 17 |

| | |
|---------------------------------|-----------|
| VIP Stateroom LED TV | 17 |
| VIP Stateroom Forward | 17 |
| VIP Stateroom En-Suite Head | 18 |
| VIP Stateroom En-Suite Head | 18 |
| Master Stateroom Bed | 18 |
| Master Stateroom Starboard View | 18 |
| Master Stateroom Port View | 18 |
| Master Stateroom Settee | 18 |
| Master Stateroom En-Suite Head | 19 |
| Crew Quarters | 19 |
| Crew Quarter | 19 |
| Port CAT C18 Engine | 19 |
| Starboard CAT C18 Engine | 19 |
| CAT Engine Logo | 19 |
| Kholer Generator | 20 |
| New Cruisair Air Conditioning | 20 |
| Layout | 20 |
| CONTACTS | 21 |
| Contact details | 21 |
| Telephones | 21 |
| Office hours | 21 |
| Address | 21 |

SPECIFICATIONS

Basic Information

Category: Cruiser

Sub Category: Express

Model Year: 2008

Year Built: 2008

Country: United States

Dimensions

LOA: 62' 0" (18.90m)

Beam: 16' 1" (4.90m)

Max Draft: 5' 0" (1.52m)

Speed, Capacities and Weight

Cruise Speed: 30 Kts. (35 MPH)

Max Speed: 37 Kts. (43 MPH)

Displacement: 67725 Pounds

Water Capacity: 220 Gallons

Holding Tank: 100 Gallons

Fuel Capacity: 713 Gallons

Accommodations

Total Cabins: 2

Total Berths: 3

Total Heads: 2

Hull and Deck Information

Hull Material: Fiberglass

Engine Information

Engines: 2

Manufacturer: Caterpillar

Model: C18

Engine Type: Inboard

Fuel Type: Diesel

DETAILED INFORMATION

Key Features To Consider

METICULOUSLY MAINTAINED AND UPGRADED!! NEW AIR CONDITIONING AND AIR HANDLERS THROUGHOUT!! BOW AND STERN THRUSTERS!! HYDRAULIC SWIM PLATFORM!! STERN GARAGE FOR TENDER!! NEW SATELLITE TV!! UNDERWATER LIGHTS!! NEW LED TV'S THROUGHOUT!! INTERIOR SUNROOF!! TO MUCH TO LIST - ABSOLUTE MUST SEE!! MOTIVATED SELLER MAKE AN OFFER TODAY!!

Aft Deck

Boarding from the Aft Deck you are greeted with a perfect setting in which to enjoy moments of relaxing conversation against the ever-changing backdrop of the sea. Ergonomically designed you will find all the necessary amenities close by for whatever the occasion calls for.

- Teak decking
- Ice Maker
- BBQ Grill
- Aft deck hot and cold shower
- Overhead Lighting
- Engine Room Fire Pulls
- Fire Extinguisher
- Shore Power Connection
- Shore Telephone Connection
- Cable TV Connection
- Swim Platform with Ladder

Main Salon

The salon area on the Azimut 62S is bathed in sunlight thanks to its exclusive double elliptical windows and retractable sunroof. A perfect vantage point to enjoy the vista. This exclusive living space is distinguished by sophisticated interior styling to satisfy your every need while on board. You will find refined detailing, like the dark wood paneling and Italian leather throughout the yacht. A U shaped leather sofa is located to Port and a BOSE Home Theater system has been installed with high definition full surround sound and a large flat screen TV.

- Overhead Electric Sunroof
- Wenge Floors
- Overhead Lighting
- Privacy Curtains
- A/C controls

- Bose AM/FM CD Surround System
- DVD Player
- NEW - LED Flat Screen TV

Pilot House

Directly forward is the helm station. Perfectly situated providing great visibility and comfort. Everything you need to take you safely to your next destination is here. Ergonomically designed for easy use mixed with the style that only Azimut can supply.

- (2) Leather helm chair
- Joystick or Throttle Operation
- Dual Raymarine Marine GPS Plotters
- Raymarine Auto Pilot
- Raymarine TriData
- Raymarine VHF
- Gauges
- Raymarine Open Array Radar
- Engine Synchronizer
- Trim Tab Indicator and Controls
- Quick Anchor Chain Counter
- Ships Alarm Panel
- Spotlight Control

Galley

Located in the Main Salon is the Convertible Galley. This fully furnished galley offers plenty of room to entertain guests while onboard. Large enough for a refrigerator and freezer, you are sure to have plenty space for food on long trips. An exclusive design characterizes the special slots to keep dishes securely stowed regardless of sea conditions.

- NEW - Refrigerator
- Freezer
- Microwave - Convection Oven
- (4) Burner electric range
- Stainless Steel Sink
- Wenge Floor
- Above Counter Lighting
- Fire Extinguisher

Lower Guest Lounge

Directly opposite the galley is a Lower Guest Lounge. Rich leather seating provides enough room to seat six comfortably.

- NEW LED Flat-screen TV
- Cruisair Airconditioning
- Overhead Lighting
- Carpeted Floors

Master Stateroom

The elegance comfort and sensuous lines of the yacht are also found in the master stateroom. A queen island berth is easily accessible from either side. The spacious wardrobe provides ample storage for clothing and has a full length mirror inside the door. The private ensuite head has a spacious stall shower and a porthole through which natural light illuminates the room during the day. All appointments are in dark wood paneling, tasteful vinyls cover the walls, custom fabrics cover the bed. Fabric curtains are sure to keep the light out on those late mornings at anchor.

- Queen size island berth with steps on both side
- Storage below berth
- Cushioned side paneling
- En-suite head with stall shower
- Flat Screen TV
- A/C controls

VIP Stateroom

All the forward is the VIP Stateroom. The elegance comfort and sensuous lines of the yacht are also found here. Twin berths are easily accessible and create a lot of space in this stateroom in the open position and close to create a queen berth. The spacious wardrobe provides ample storage for clothing. Private access to the ensuite head is provided in this cabin. Tasteful vinyl's cover the walls, custom fabrics cover the bed. Fabric curtains are sure to keep the light out on those late mornings in bed.

- (2) Twin Berths - Can be separate or close to create a single Queen Berth
- Full size closet
- Drawers w/ storage
- Ensuite head with stall shower
- LCD TV
- A/C controls

Crew Quarters

Equipped with an additional crew quarter cabin in the bow. Excellent location for extra storage if not being used for crew.

Deck Equipment

Walk around decks and a large bow section makes moving around the decks a breeze.

- Satellite TV - NEW
- Full Bottom Job and New Zincs December 2014
- Underwater Lights
- Gangway
- Stern Garage
- Anchor Chain
- Anchor
- Lofrans anchor windlass
- Access from cockpit hatch to engine room
- Hot and cold cockpit shower
- Hydraulic Swim platform
- Stainless steel teak swim ladder
- 50amp Dockside electric connection 220V
- Horn
- Glendinning Cable Master
- Navigation Lights
- Windshield shades
- Cockpit cushions
- Cockpit storage lockers
- Cockpit lights
- Refueling intakes with flush covers
- Navigation Lights
- Boat hook
- Mooring lines

Engine Room

Engine room access is made simple with easy access from the after deck.

- (3) CAT C18 1015hp - Appx 670 hours
- Kohler 20kw Generator - Appx 1530 hours
- Bow and Stern Thrusters
- Racor Prefilters
- Battery Charger
- Fresh Water Pump and Accumulator
- Temperature Sensors

- Oil Change System
- Cruisair air conditioning - NEW
- Engine room extinguisher with engine shutdown system - NEW
- Hydraulic Steering
- Electronic Controls
- Trim tabs
- Toilet System

Remarks

An outstanding example of Azimut's unique style and special attention to detail. Don't miss this amazing opportunity to OWN THIS METICULOUSLY MAINTAINED AND UPGRADED 62S AZIMUT THAT IS IN TURN KEY CONDITION!! If you are in the market for a 62S, THIS IS A MUST SEE! She is easy to show 7 days a week. Schedule your appointment today!

EXCLUSIONS

285 Williams Jet Tender and Owners Personal Effects. A list will be provided upon request.

Exclusions

Owner's personal belongings.

Disclaimer

The Company offers the details of this vessel or yacht in good faith but cannot guarantee or warrant the accuracy of this information nor warrant the condition of the vessel. A buyer should instruct his representatives, agents, or his surveyors, to investigate such details as the buyer desires validated. This vessel or yacht is offered subject to prior sale, price change, or withdrawal without notice.

PHOTOS

Azimut Detail



Stern



Aft View



Aft Deck



Aft Deck Sunpad and Lounge



Aft Deck Electrical Panel



Aft Deck BBQ, Sink and Icemaker



Bow Sunpad



Sunroof Open



Radar and SAT TV



Bow Sunpad with Back Rest



Bow



Aft Deck Doors Open



Aft Deck Doors Closed



Main Salon Forward



Main Salon Couch



Main Salon Forward



Main Salon Sunroof Open



Pilot House



Pilot House



Helm



Main Salon Above View



Lower Guest Lounge



Lower Guest Lounge



Galley

Lower Guest Lounge LED TV



New Galley Refrigerator



Galley



Galley



VIP Sateroom



VIP Sateroom



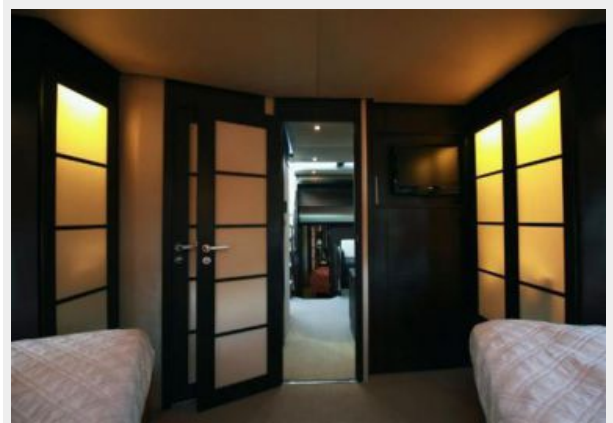
VIP Sateroom



VIP Stateroom LED TV



VIP Stateroom Forward



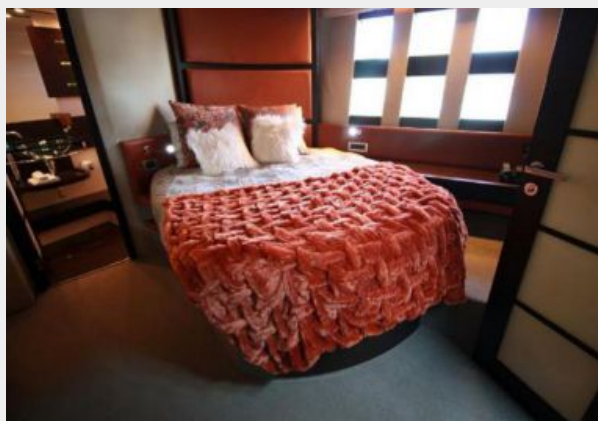
VIP Stateroom En-Suite Head



VIP Stateroom En-Suite Head



Master Stateroom Bed



Master Stateroom Starboard View



Master Stateroom Port View



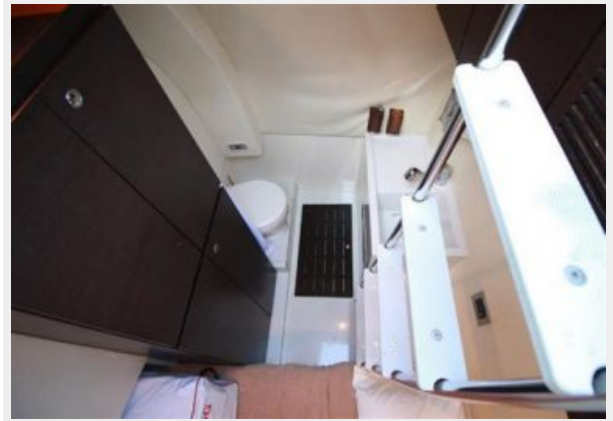
Master Stateroom Settee



Master Stateroom En-Suite Head



Crew Quarters



Crew Quarter



Port CAT C18 Engine



Starboard CAT C18 Engine



CAT Engine Logo



Kholer Generator



New Cruisair Air Conditioning



Layout



CONTACTS

Andrey Shestakov, leading yacht broker of the sales department of Shestakov Yacht Sales Inc. Shestakov Yacht Sales Inc., the official representative of the Miami/Fort Lauderdale FL headquarters.

Contact details

Email: andrey@shestakovyachtsales.com

Web: shestakovyachtsales.com/en/

Telephones

USA: +1(954)274-4435

Office hours

Monday – Saturday: **9:00 - 21:00** EDT

Sunday: **closed**

Address



Harbour Towne Marina, 850 NE 3rd St,
STE 213, Dania, FL 33004