

ABSOLUTE MUST SEE!! — AZIMUT



Судостроитель: [AZIMUT](#)

Год постройки: 2008

Модель: Крейсер

Цена: ЦЕНА ЯХТЫ ПО ЗАПРОСУ

Местонахождение: United States

Длина общая: 62' 0" (18.90m)

Ширина: 16' 1" (4.90m)

Макс. осадка: 5' 0" (1.52m)

Крейс. скорость: 30 Kts. (35 MPH)

Макс. скорость: 37 Kts. (43 MPH)

Купить **ABSOLUTE MUST SEE!! — AZIMUT** а также выбрать подходящую вам яхту из нашего каталога яхт вам поможет опытный яхтенный брокер Андрей Шестаков. На сегодняшний день компания **Shestakov Yacht Sales Inc.** имеет большое количество яхт в собственном списке продаж, а также тесно сотрудничает со всеми крупными яхтенными производителями по всему миру.

Для того чтобы купить яхту **ABSOLUTE MUST SEE!! — AZIMUT** а также проконсультироваться по любому вопросу связанному с покупкой, продажей, чартером яхт позвоните по телефону **+7(918)465-66-44**.

ОГЛАВЛЕНИЕ

ОГЛАВЛЕНИЕ	2
ХАРАКТЕРИСТИКИ	5
Основная информация	5
Размеры	5
Скорость, вместимость и масса	5
Размещение	5
Корпус и палуба	5
Информация о двигателе	6
ПОДРОБНОЕ ОПИСАНИЕ	7
Key Features To Consider	7
Aft Deck	7
Main Salon	7
Pilot House	8
Galley	8
Lower Guest Lounge	8
Master Stateroom	9
VIP Stateroom	9
Crew Quarters	9
Deck Equipment	10
Engine Room	10
Remarks	11
EXCLUSIONS	11
Исключения	11
Отказ от ответственности	11
ФОТОГРАФИИ	12
Azimut Detail	12
Stern	12
Aft View	12

Aft Deck	12
Aft Deck Sunpad and Lounge	12
Aft Deck Electrical Panel	12
Aft Deck BBQ, Sink and Icemaker	13
Bow Sunpad	13
Sunroof Open	13
Radar and SAT TV	13
Bow Sunpad with Back Rest	13
Bow	13
Aft Deck Doors Closed	14
Aft Deck Doors Open	14
Main Salon Forward	14
Main Salon Couch	14
Main Salon Forward	14
Main Salon Sunroof Open	14
Pilot House	15
Pilot House	15
Helm	15
Main Salon Above View	15
Lower Guest Lounge	15
Lower Guest Lounge	15
Galley	16
Lower Guest Lounge LED TV	16
New Galley Refrigerator	16
Galley	16
Galley	17
VIP Sateroom	17
VIP Sateroom	17
VIP Sateroom	17

VIP Stateroom LED TV	17
VIP Stateroom Forward	17
VIP Stateroom En-Suite Head	18
VIP Stateroom En-Suite Head	18
Master Stateroom Bed	18
Master Stateroom Starboard View	18
Master Stateroom Port View	18
Master Stateroom Settee	18
Master Stateroom En-Suite Head	19
Crew Quarters	19
Crew Quarter	19
Port CAT C18 Engine	19
Starboard CAT C18 Engine	19
CAT Engine Logo	19
Kholer Generator	20
New Cruisair Air Conditioning	20
Layout	20
КОНТАКТЫ	21
Контактная информация	21
Телефоны	21
Время работы	21
Адрес	21

ХАРАКТЕРИСТИКИ

Основная информация

Тип судна: Крейсер

Подкатегория: Express

Модельный год: 2008

Год постройки: 2008

Страна: United States

Размеры

Длина общая: 62' 0" (18.90m)

Ширина: 16' 1" (4.90m)

Макс. осадка: 5' 0" (1.52m)

Скорость, вместимость и масса

Крейс. скорость: 30 Kts. (35 MPH)

Макс. скорость: 37 Kts. (43 MPH)

Водоизмещение: 67725 Pounds

Вместимость воды: 220 Gallons

Вместимость сточного бака: 100 Gallons Объем топливного бака: 713 Gallons

Размещение

Всего кают: 2

Всего коек: 3

Всего ком. состава: 2

Корпус и палуба

Материал корпуса: Fiberglass

Информация о двигателе

Двигатели: 2

Производитель: Caterpillar

Модель: C18

Тип двигателя: Inboard

Тип топлива: Diesel

ПОДРОБНОЕ ОПИСАНИЕ

Key Features To Consider

METICULOUSLY MAINTAINED AND UPGRADED!! NEW AIR CONDITIONING AND AIR HANDLERS THROUGHOUT!! BOW AND STERN THRUSTERS!! HYDRAULIC SWIM PLATFORM!! STERN GARAGE FOR TENDER!! NEW SATELLITE TV!! UNDERWATER LIGHTS!! NEW LED TV'S THROUGHOUT!! INTERIOR SUNROOF!! TO MUCH TO LIST - ABSOLUTE MUST SEE!! MOTIVATED SELLER MAKE AN OFFER TODAY!!

Aft Deck

Boarding from the Aft Deck you are greeted with a perfect setting in which to enjoy moments of relaxing conversation against the ever-changing backdrop of the sea. Ergonomically designed you will find all the necessary amenities close by for whatever the occasion calls for.

- Teak decking
- Ice Maker
- BBQ Grill
- Aft deck hot and cold shower
- Overhead Lighting
- Engine Room Fire Pulls
- Fire Extinguisher
- Shore Power Connection
- Shore Telephone Connection
- Cable TV Connection
- Swim Platform with Ladder

Main Salon

The salon area on the Azimut 62S is bathed in sunlight thanks to its exclusive double elliptical windows and retractable sunroof. A perfect vantage point to enjoy the vista. This exclusive living space is distinguished by sophisticated interior styling to satisfy your every need while on board. You will find refined detailing, like the dark wood paneling and Italian leather throughout the yacht. A U shaped leather sofa is located to Port and a BOSE Home Theater system has been installed with high definition full surround sound and a large flat screen TV.

- Overhead Electric Sunroof
- Wenge Floors
- Overhead Lighting
- Privacy Curtains
- A/C controls

- Bose AM/FM CD Surround System
- DVD Player
- NEW - LED Flat Screen TV

Pilot House

Directly forward is the helm station. Perfectly situated providing great visibility and comfort. Everything you need to take you safely to your next destination is here. Ergonomically designed for easy use mixed with the style that only Azimut can supply.

- (2) Leather helm chair
- Joystick or Throttle Operation
- Dual Raymarine Marine GPS Plotters
- Raymarine Auto Pilot
- Raymarine TriData
- Raymarine VHF
- Gauges
- Raymarine Open Array Radar
- Engine Synchronizer
- Trim Tab Indicator and Controls
- Quick Anchor Chain Counter
- Ships Alarm Panel
- Spotlight Control

Galley

Located in the Main Salon is the Convertible Galley. This fully furnished galley offers plenty of room to entertain guests while onboard. Large enough for a refrigerator and freezer, you are sure to have plenty space for food on long trips. An exclusive design characterizes the special slots to keep dishes securely stowed regardless of sea conditions.

- NEW - Refrigerator
- Freezer
- Microwave - Convection Oven
- (4) Burner electric range
- Stainless Steel Sink
- Wenge Floor
- Above Counter Lighting
- Fire Extinguisher

Lower Guest Lounge

Directly opposite the galley is a Lower Guest Lounge. Rich leather seating provides enough room to seat six comfortably.

- NEW LED Flat-screen TV
- Cruisair Airconditioning
- Overhead Lighting
- Carpeted Floors

Master Stateroom

The elegance comfort and sensuous lines of the yacht are also found in the master stateroom. A queen island berth is easily accessible from either side. The spacious wardrobe provides ample storage for clothing and has a full length mirror inside the door. The private ensuite head has a spacious stall shower and a porthole through which natural light illuminates the room during the day. All appointments are in dark wood paneling, tasteful vinyls cover the walls, custom fabrics cover the bed. Fabric curtains are sure to keep the light out on those late mornings at anchor.

- Queen size island berth with steps on both side
- Storage below berth
- Cushioned side paneling
- En-suite head with stall shower
- Flat Screen TV
- A/C controls

VIP Stateroom

All the forward is the VIP Stateroom. The elegance comfort and sensuous lines of the yacht are also found here. Twin berths are easily accessible and create a lot of space in this stateroom in the open position and close to create a queen berth. The spacious wardrobe provides ample storage for clothing. Private access to the ensuite head is provided in this cabin. Tasteful vinyl's cover the walls, custom fabrics cover the bed. Fabric curtains are sure to keep the light out on those late mornings in bed.

- (2) Twin Berths - Can be separate or close to create a single Queen Berth
- Full size closet
- Drawers w/ storage
- Ensuite head with stall shower
- LCD TV
- A/C controls

Crew Quarters

Equipped with an additional crew quarter cabin in the bow. Excellent location for extra storage if not being used for crew.

Deck Equipment

Walk around decks and a large bow section makes moving around the decks a breeze.

- Satellite TV - NEW
- Full Bottom Job and New Zincs December 2014
- Underwater Lights
- Gangway
- Stern Garage
- Anchor Chain
- Anchor
- Lofrans anchor windlass
- Access from cockpit hatch to engine room
- Hot and cold cockpit shower
- Hydraulic Swim platform
- Stainless steel teak swim ladder
- 50amp Dockside electric connection 220V
- Horn
- Glendinning Cable Master
- Navigation Lights
- Windshield shades
- Cockpit cushions
- Cockpit storage lockers
- Cockpit lights
- Refueling intakes with flush covers
- Navigation Lights
- Boat hook
- Mooring lines

Engine Room

Engine room access is made simple with easy access from the aft deck.

- (3) CAT C18 1015hp - Appx 670 hours
- Kohler 20kw Generator - Appx 1530 hours
- Bow and Stern Thrusters
- Racor Prefilters
- Battery Charger
- Fresh Water Pump and Accumulator
- Temperature Sensors

- Oil Change System
- Cruisair air conditioning - NEW
- Engine room extinguisher with engine shutdown system - NEW
- Hydraulic Steering
- Electronic Controls
- Trim tabs
- Toilet System

Remarks

An outstanding example of Azimut's unique style and special attention to detail. Don't miss this amazing opportunity to OWN THIS METICULOUSLY MAINTAINED AND UPGRADED 62S AZIMUT THAT IS IN TURN KEY CONDITION!! If you are in the market for a 62S, THIS IS A MUST SEE! She is easy to show 7 days a week. Schedule your appointment today!

EXCLUSIONS

285 Williams Jet Tender and Owners Personal Effects. A list will be provided upon request.

Исключения

При продаже яхты исключаются личные вещи владельца.

Отказ от ответственности

Компания предоставляет описание судна или яхты добросовестно, но не может гарантировать точность этой информации, а также не ручается за техническое состояние. Покупатель должен проинструктировать своих агентов или оценщиков исследовать представленную информацию более подробно, по собственному желанию. Продажа судна или яхты, изменение цены или снятие с продажи будет происходить без предварительного уведомления.

ФОТОГРАФИИ

Azimut Detail



Stern



Aft View



Aft Deck



Aft Deck Sunpad and Lounge



Aft Deck Electrical Panel



Aft Deck BBQ, Sink and Icemaker



Bow Sunpad



Sunroof Open



Radar and SAT TV



Bow Sunpad with Back Rest



Bow



Aft Deck Doors Open



Aft Deck Doors Closed



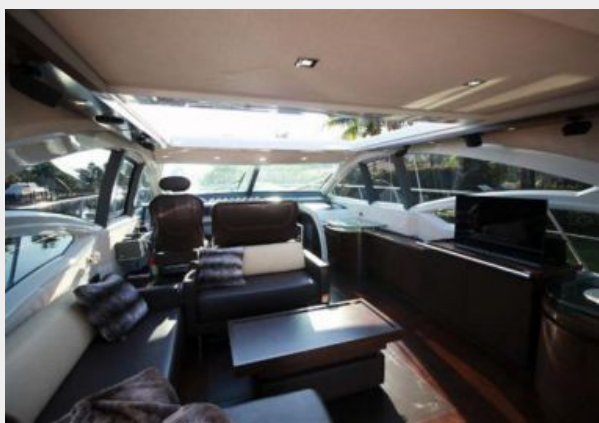
Main Salon Forward



Main Salon Couch



Main Salon Forward



Main Salon Sunroof Open



Pilot House



Pilot House



Helm



Main Salon Above View



Lower Guest Lounge



Lower Guest Lounge



Lower Guest Lounge LED TV



Galley



New Galley Refrigerator



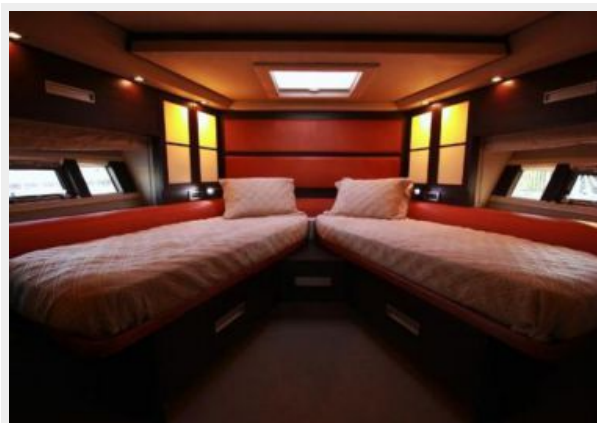
Galley



Galley



VIP Sateroom



VIP Sateroom



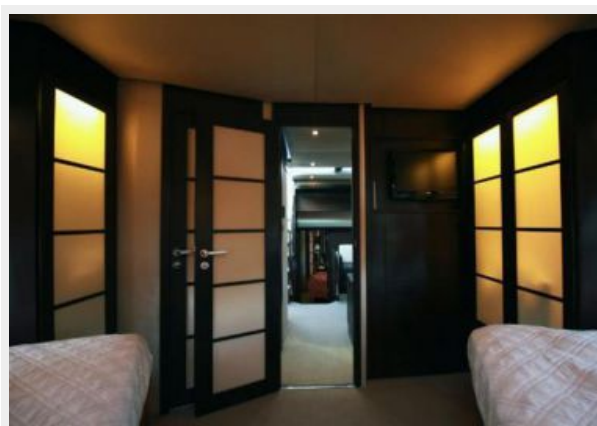
VIP Sateroom



VIP Stateroom LED TV



VIP Stateroom Forward



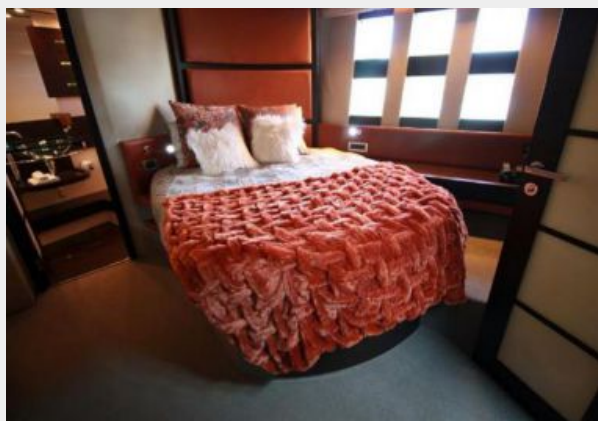
VIP Stateroom En-Suite Head



VIP Stateroom En-Suite Head



Master Stateroom Bed



Master Stateroom Starboard View



Master Stateroom Port View



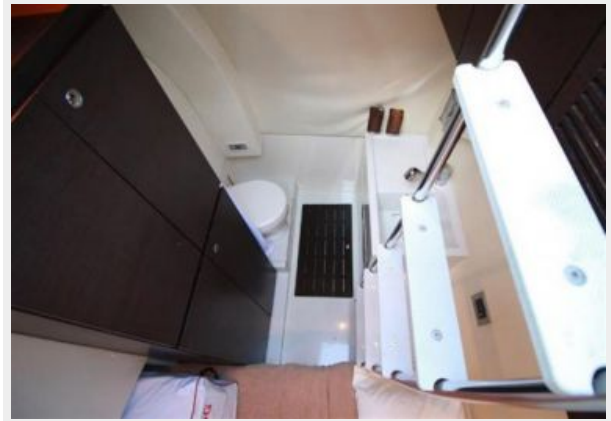
Master Stateroom Settee



Master Stateroom En-Suite Head



Crew Quarters



Crew Quarter



Port CAT C18 Engine



Starboard CAT C18 Engine



CAT Engine Logo



Kholer Generator



New Cruisair Air Conditioning



Layout



КОНТАКТЫ

Андрей Шестаков (Andrey Shestakov) – ведущий яхтенный брокер отдела продаж яхт и судов компании Shestakov Yacht Sales Inc. Официальный представитель Shestakov Yacht Sales Inc. для русскоговорящих клиентов в центральном офисе компании в Майами/Форт Лодердейл/Флорида/США.

Контактная информация

Email: andrey@shestakovyachtsales.com

Web: shestakovyachtsales.com

Телефоны

Краснодарский край: **+7(918)465-66-44**

США, Майами, Флорида: **+1(954)274-4435**

Время работы

Понедельник – Суббота: **9:00 - 21:00**
EDT

Воскресенье: **Закрето**

Адрес



Harbour Towne Marina, 850 NE 3rd St,
STE 213, Dania, FL 33004