

# SL118 AMERICAS EDITION — SANLORENZO



**Builder:** SANLORENZO

**Year Built:** 2016

**Model:** Motor Yacht

**Price:** PRICE ON APPLICATION

**Location:** Italy

**LOA:** 118' 0" (35.97m)

**Beam:** 24' 11" (7.59m)

**Max Draft:** 6' 10" (2.08m)

**Cruise Speed:** 24 Kts. (28 MPH)

**Max Speed:** 27 Kts. (31 MPH)

Our experienced yacht broker, Andrey Shestakov, will help you choose and buy a yacht that best suits your needs **SL118 Americas Edition — SANLORENZO** from our catalogue. Presently, at Shestakov Yacht Sales Inc., we have a wide variety of yachts available on our sale's list. We also work in close contact with all the big yacht manufacturers from all over the world.

If you would like to buy a yacht **SL118 Americas Edition — SANLORENZO** or would like help answering any questions concerning purchasing, selling or chartering a yacht, please call **+1(954)274-4435**

# TABLE OF CONTENTS

TABLE OF CONTENTS	2
SPECIFICATIONS	4
Overview	4
Basic Information	5
Dimensions	5
Speed, Capacities and Weight	5
Accommodations	5
Hull and Deck Information	6
Engine Information	6
DETAILED INFORMATION	7
DESCRIPTION	7
AMERICAS EDITION PACKAGE	7
OPTIONS & UPGRADES	8
Exclusions	10
Disclaimer	10
PHOTOS	11
PROFILE	11
TERRACE PROFILE	11
TERRACE	11
BEACH CLUB	11
BOW SUNPAD	11
FLYBRIDGE	11
FLYBRIDGE	12
FLYBRIDGE JACUZZI	12
FLYBRIDGE BAR	12
AFT DECK	12
OPENING SALON WINDOWS	12
STEPS TO FLYBRIDGE	12

---

MAIN SALON	12
DINING	12
MASTER STATEROOM	13
MASTER STATEROOM	13
MASTER STATEROOM	13
MASTER HEAD	13
LOWER DECK LOBBY	13
VIP STATEROOM	13
VIP HEAD	14
GUEST STATEROOM	14
GALLEY	14
CREW MESS	14
CONTACTS	15
Contact details	15
Telephones	15
Office hours	15
Address	15

---

---

# SPECIFICATIONS

---

## Overview

---

**Sanlorenzo SL118: The new flagship of the SL line, with a planing hull in fiberglass and over 36 meters in length. The yacht recalls the traditional features of the SL line, including innovative solutions and large spaces, without altering the traditional family feeling. With a draft of 7' 5" (2.25m), it is perfect for cruising around the Caribbean. When tenders and toys are in the water, the yacht's enlarged swim platform and transom garage are transformed into a beach club.**

**The sleek exterior lines of the new 118 are enhanced by a decor concept that is a contemporary nod to classic nautical elements. Traditional motifs are skillfully reinterpreted in a simply modern fresh interpretation.**

**The indoor outdoor aspect of the cruising lifestyle is captured by the use of honed teak flooring thru out, washed linen slipcovers, and game tables that convert to a traditional dining table. A traditional teak staircase to the bridge is encased with glass to be integrated with the salon and to be an exciting design element. All elements have been deliberately selected to suggest lounging and relaxation. Beach cabanas along the Cote d' Azur and the Riviera were the inspiration for the style of this exceptional yacht.**

**Fresh air and visibility of the sea is the mantra for the 118 with a salon terrace, sliding salon windows and master stateroom gull wing opening windows. A traditional teak staircase to the bridge is encased with glass to be integrated with the salon and to be an exciting design element.**

**Accommodations for 10 guests include an on-deck master suite and four lower deck staterooms. The two VIP staterooms have ensuite heads. Two guest staterooms also feature ensuite heads, as well as convertible sliding berths for twin or double berth arrangements. Crew's quarters sleep up to 7 crew.**

**Made for the Americas market, this yacht is built with full "Americas Edition" specifications, including Zero speed electric stabilizers, larger generators, larger A/C capacity, a US electrical system and appliances.**

---

## Basic Information

---

**Category:** Motor Yacht

**Model Year:** 2016

**Year Built:** 2016

**Country:** Italy

**Vessel Top:** Hardtop

**Fly Bridge:** Yes

**Cockpit:** Yes

---

## Dimensions

---

**LOA:** 118' 0" (35.97m)

**LWL:** 99' 6" (30.33m)

**Beam:** 24' 11" (7.59m)

**Max Draft:** 6' 10" (2.08m)

---

## Speed, Capacities and Weight

---

**Cruise Speed:** 24 Kts. (28 MPH)

**Cruise Speed Range:** 638

**Max Speed:** 27 Kts. (31 MPH)

**Displacement:** 386000 Pounds

**Gross Tonnage:** 281 Pounds

**Water Capacity:** 1188 Gallons

**Holding Tank:** 1056 Gallons

**Fuel Capacity:** 5257 Gallons

---

## Accommodations

---

**Total Cabins:** 5

**Total Berths:** 7

**Sleeps:** 10

**Total Heads:** 5

**Captain Cabin:** True

**Crew Cabin:** 4

**Crew Berths:** 6

**Crew Sleeps:** 7

**Crew Heads:** 4

---

## Hull and Deck Information

---

**Hull Material:** GRP

**Deck Material:** Teak

**Hull Configuration:** Planing

**Hull Color:** White

**Hull Designer:** Sanlorenzo

**Exterior Designer:** Francesco Paszkowski

**Interior Designer:** Marty Lowe

---

## Engine Information

---

**Engines:** 2

**Manufacturer:** MTU

**Model:** 16V2000 M94

**Engine Type:** Inboard

**Fuel Type:** Diesel

---

# DETAILED INFORMATION

---

## DESCRIPTION

---

**Sanlorenzo SL118: The new flagship of the SL line, with a planing hull in fiberglass and over 36 meters in length. The yacht recalls the traditional features of the SL line, including innovative solutions and large spaces, without altering the traditional family feeling. With a draft of 7' 5" (2.25m), it is perfect for cruising around the Caribbean. When tenders and toys are in the water, the yacht's enlarged swim platform and transom garage are transformed into a beach club.**

**The sleek exterior lines of the new 118 are enhanced by a decor concept that is a contemporary nod to classic nautical elements. Traditional motifs are skillfully reinterpreted in a simply modern fresh interpretation.**

**The indoor outdoor aspect of the cruising lifestyle is captured by the use of honed teak flooring thru out, washed linen slipcovers, and game tables that convert to a traditional dining table. A traditional teak staircase to the bridge is encased with glass to be integrated with the salon and to be an exciting design element. All elements have been deliberately selected to suggest lounging and relaxation. Beach cabanas along the Cote d' Azur and the Riviera were the inspiration for the style of this exceptional yacht.**

**Fresh air and visibility of the sea is the mantra for the 118 with a salon terrace, sliding salon windows and master stateroom gull wing opening windows. A traditional teak staircase to the bridge is encased with glass to be integrated with the salon and to be an exciting design element.**

**Accommodations for 10 guests include an on-deck master suite and four lower deck staterooms. The two VIP staterooms have ensuite heads. Two guest staterooms also feature ensuite heads, as well as convertible sliding berths for twin or double berth arrangements. Crew's quarters sleep up to 7 crew.**

**Made for the Americas market, this yacht is built with full "Americas Edition" specifications, including Zero speed electric stabilizers, larger generators, larger A/C capacity, a US electrical system and appliances.**

---

## AMERICAS EDITION PACKAGE

---

**ELECTRICAL SYSTEM** Electrical system: 127/220V Shore power connections: Two (2) 220V AC 100A Three-phase 60Hz Generators: Two (2) 80kW Battery charger: 12V/25A for generator batteries Aft Glendenning Cablemasters: Two (2) CM8 GFCI located in technical room, bathroom, galley and exterior utilizing waterproof boxes in engine room and lazarette Isolation transformers (upgraded below) Double gang 110V 60Hz USA/EU sockets One (1) 24V master

switch dedicated to navigation electronics at pilothouse **ENGINE ROOM EQUIPMENT** Double Racor filters for generators Ball valve thru-hull fittings (engine cooling exhausts remain as gate valves) Engine oil change system with manual pump (upgraded below) Additional air conditioning raw water pump installed in by-pass Additional grey water pump installed in by-pass Additional black water pump installed in by-pass Water tank purification system with active carbons Watermaker: Sea Recovery 1800 gallons/day Installation of FM200 fire system equipment (USCG approved) **AIR CONDITIONING SYSTEM** Tropicalized air conditioning system: 360,000 BTU Air conditioning condensation draining overboard **COMPLEMENTS FOR THE EXTERIOR** One (1) Flybridge freshwater connection/tap One (1) Aft freshwater connection/tap Spotlight Lateral gangway: Marquipt Sea Stair with nine steps Rub rail with stainless steel trim Stainless steel protection around the exhaust plenums and forward bow cap rail area Prop speed on shafts, propeller, and hydraulic swim platform mechanism, intruder, shafts, brackets, bow and stern thruster, rudders and trim tabs USCG approved mast head light predisposition **APPLIANCES** Washing machine: Miele Dryer: Miele Cooktop: Miele Microwave: Sharp (upgraded below to Miele speed oven) Oven: Miele Dishwasher: Miele Upright refrigerator/freezer: Two (2) Sub-Zero series with drawers and overlay panels (upgraded below) Ventilation fan: Miele Insinkerator sink/food waste disposal Salon bar refrigerator: Scotsman (upgraded below to Sub-Zero) Salon bar ice maker: Scotsman Flybridge refrigerator: Frigonautica Flybridge ice maker: Scotsman Teppan Yaki: Miele **ADDITIONAL ITEMS** Interior hard latch system: Slides or positive catches on all galley/bar appliances and other drawer units VHF with US channels Portable fire extinguishers, life rafts, lifejackets, rings and emergency equipment Refrigerator inverter system Deletion of bidets **CERTIFICATES & DOCUMENTATION** HIN plate Hauling diagrams

## OPTIONS & UPGRADES

**ELECTRICAL SYSTEM** Frequency converter: ASEA (220V/110V - 50Hz/60Hz) with seamless transfer including deletion of isolation transformers **ENGINE ROOM EQUIPMENT** Electric pump in lieu of standard manual pump for engine oil change system (not including dirty oil storage tank) Manual diesel filler in the garage for the tender Air compressor with four (4) connections: bow, garage, engine room, and flybridge Ozone treatment for air conditioning ventilation **THRUSTERS & STABILIZERS** Electric stern thruster **MANEUVERING & CONTROLS** MTU digital displays on flybridge Portable control station for main engines and thrusters (with two plugs) **ALARMS & SECURITY** Five (5) camera CCTV IP system: Two fixed cameras on the cockpit, two fixed cameras in engine room and one pan/tilt camera. Includes one (1) monitor in pilothouse and DVR. Additional fixed camera for CCTV system in control room Additional 22" monitor for CCTV system in crew mess Additional 12" full-function touch screen systems monitor in crew mess Raymarine A65 chart plotter will repeat GPS-depth-radar alarm in captain's cabin iPad remote control for ships monitoring system (customer supplied iPad) **SATELLITE & COMMUNICATION SYSTEMS** Predisposition for KVH V7 SAT phone antenna (with cable wiring) Predisposition for KVH M9 and HD7 SAT TV antennas (with double cable wiring) Two (2) KVH empty radomes 4G Wi-Fi internet communication system with Harbour hot spot antenna PABX telephone switchboard system iPad remote control system: Includes lighting, salon and



master stateroom draperies, and electric windows and doors (customer supplied iPad)

**NAVIGATION & ELECTRONICS** Raymarine DIAMOND package Raymarine T450 thermal camera for night vision/low light Upgraded audio/visual package **COMPLEMENTS FOR THE EXTERIOR** Electro-hydraulic lateral terrace in salon (starboard side) Aft flybridge sail cover awning system with removable carbon fiber stanchions Flybridge Jacuzzi with water heater Column shower on flybridge Teak decking on flybridge Custom bar on flybridge Custom helm seat and companion seating furniture on flybridge Sea & Symphony TV lift system incorporated into flybridge helm seat cabinet Teak decking on bow area Disappearing stern shower Sixteen (16) Ocean LED underwater lights Launching/recovery system for jet ski/wave runner in the garage **COMPLEMENTS FOR THE INTERIOR** Three (3) electric opening windows in salon (port side) Washbasin in salon bar furniture Electric full-length drapery curtains for salon terrace Indirect LED lighting behind drapery curtains in salon Aerial staircase to flybridge in a glass enclosure, viewable inside salon Aerial staircase from main deck to lower deck Aerial staircase to flybridge in pilothouse Two (2) gull-wing windows in the master stateroom full beam area Washbasin in master stateroom water closet Steam shower in master head Five (5) overhead rain showers: One in master and for each VIP/guest shower Four (4) electric black-out shades in addition to standard drapery curtains: One for each VIP/guest stateroom (black-out shades are standard in master stateroom) Indirect LED lighting behind drapery curtains, under berths and behind headboards in all staterooms USB outlets incorporated into night stands in all staterooms Three (3) berths hinging up with pistons (for additional storage): Master and two VIP berths Three (3) additional safes Additional crew cabin with ensuite head Sink in crew mess **FURNITURE & DÉCOR** Exterior loose furniture by Paola Lenti. Upgrades: Additional flybridge dining chairs, arm chairs, bar stools, poufs, platform sunbeds and sofa, sunbed cushions on the bow and flex-form sunbeds for the swim platform. Upgraded Interior Décor: Interior loose furniture by Minotti and B&B Italia. Wood flooring throughout, with a marble floor in the galley, custom-designed hand loomed carpet for lower deck staterooms. Ceilings throughout are comprised of a mixture of wood planking, high gloss lacquer, synthetic suede and reflective metal panels. Crema moka marble with a honed finish for shower walls and head vanity surfaces. Pure design and timeless details such as chrome metal trim, natural leather and visible topstitching on the furniture describes the furniture styling. Customized sliding door panels characterized by lacquered crosspieces on both sides of the doors plays with the illusion of light and privacy. Carefully selected commissioned artwork highlights this graphically simple decor with a deliberate nod to casual cruising. Custom dining table with hard leather top revolution and filler panel to create a unique large table. Two (2) sets of bed and bath linens (custom Italian embroidered). Dishware and cutlery for twelve (12), and bar glassware. **APPLIANCES** Two (2) Miele professional washing machines in lieu of one standard non-professional Miele Two (2) Miele professional dryers in lieu of one standard non-professional Miele Standard Sub-Zero refrigerator/freezer upgraded to one with all refrigeration drawers and one with all freezer drawers Sub-Zero freezer drawers in galley Miele speed oven in galley Broan Elite trash compactor in galley Sub-Zero refrigeration drawer in salon in lieu of standard fridge Sub-Zero wine cooler in lobby (full-height) Kenyon electric BBQ on flybridge Frigonautica custom refrigerator in crew mess Crew dinette microwave: Sharp (relocated from galley) Two (2) additional Summit undercounter freezers in crew mess **CERTIFICATES & DOCUMENTATION** Rina Tonnage Certificate

---

## Exclusions

---

Owner's personal belongings.

---

## Disclaimer

---

The Company offers the details of this vessel or yacht in good faith but cannot guarantee or warrant the accuracy of this information nor warrant the condition of the vessel. A buyer should instruct his representatives, agents, or his surveyors, to investigate such details as the buyer desires validated. This vessel or yacht is offered subject to prior sale, price change, or withdrawal without notice.

# PHOTOS

**PROFILE**



**TERRACE PROFILE**



**TERRACE**



**BEACH CLUB**



**BOW SUNPAD**



**FLYBRIDGE**





**FLYBRIDGE**



**FLYBRIDGE JACUZZI**



**FLYBRIDGE BAR**



**AFT DECK**



**OPENING SALON WINDOWS**



**STEPS TO FLYBRIDGE**



**MAIN SALON**



**DINING**



**MASTER STATEROOM**



**MASTER STATEROOM**



**MASTER STATEROOM**



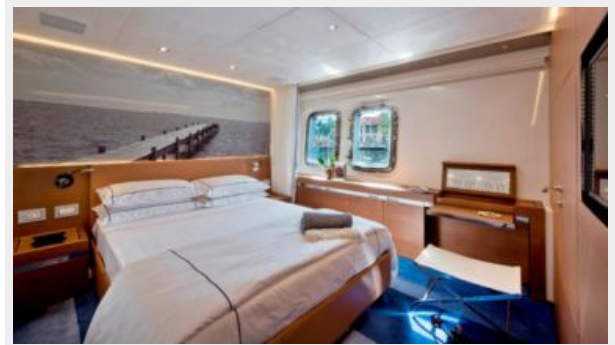
**MASTER HEAD**



**LOWER DECK LOBBY**

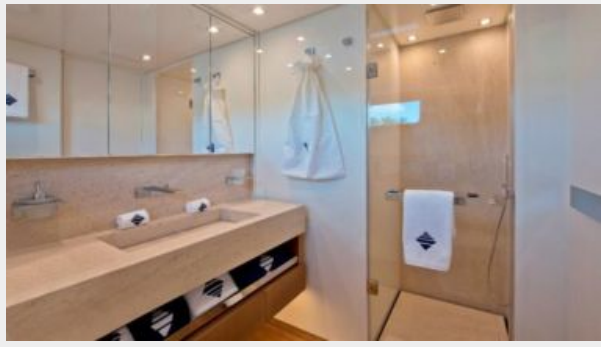


**VIP STATEROOM**





### VIP HEAD



### GUEST STATEROOM



### GALLEY



### CREW MESS



# CONTACTS

---

Andrey Shestakov, leading yacht broker of the sales department of Shestakov Yacht Sales Inc. Shestakov Yacht Sales Inc., the official representative of the Miami/Fort Lauderdale FL headquarters.

## Contact details

---

Email: [andrey@shestakovyachtsales.com](mailto:andrey@shestakovyachtsales.com)

Web: [shestakovyachtsales.com/en/](http://shestakovyachtsales.com/en/)

## Telephones

---

USA: +1(954)274-4435

## Office hours

---

Monday – Saturday: **9:00 - 21:00** EDT

Sunday: **closed**

## Address

---



Harbour Towne Marina, 850 NE 3rd St,  
STE 213, Dania, FL 33004