

## DELLA — KNOWLES



**Судостроитель:** KNOWLES

**Год постройки:** 1985

**Модель:** Катер для спортивной рыбалки

**Цена:** ЦЕНА ЯХТЫ ПО ЗАПРОСУ

**Местонахождение:** United States

**Длина общая:** 48' 0" (14.63m)

**Ширина:** 15' 0" (4.57m)

**Мин. осадка:** 4' 1" (1.24m)

**Крейс. скорость:** 28 Kts. (32 MPH)

**Макс. скорость:** 30 Kts. (35 MPH)

Купить Della — KNOWLES а также выбрать подходящую вам яхту из нашего каталога яхт вам поможет опытный яхтенный брокер Андрей Шестаков. На сегодняшний день компания Shestakov Yacht Sales Inc. имеет большое количество яхт в собственном списке продаж, а также тесно сотрудничает со всеми крупными яхтенными производителями по всему миру.

Для того чтобы купить яхту Della — KNOWLES а также проконсультироваться по любому вопросу связанному с покупкой, продажей, чартером яхт позвоните по телефону **+7(918)465-66-44**.

# ОГЛАВЛЕНИЕ

---

ОГЛАВЛЕНИЕ	2
ХАРАКТЕРИСТИКИ	3
Основная информация	3
Размеры	3
Скорость, вместимость и масса	3
Размещение	3
Корпус и палуба	3
Информация о двигателе	4
ПОДРОБНОЕ ОПИСАНИЕ	5
Vessel Description	5
Исключения	7
Отказ от ответственности	7
ФОТОГРАФИИ	8
КОНТАКТЫ	13
Контактная информация	13
Телефоны	13
Время работы	13
Адрес	13

# ХАРАКТЕРИСТИКИ

## Основная информация

**Тип судна:** Катер для спортивной рыбалки

**Подкатегория:** Convertible

**Модельный год:** 1986

**Год постройки:** 1985

**Страна:** United States

**Верх:** Full / Tuna Tower

**Открытая палуба мостика:** Да

**Кубрик:** Да

## Размеры

**Длина общая:** 48' 0" (14.63m)

**Ширина:** 15' 0" (4.57m)

**Мин. осадка:** 4' 1" (1.24m)

## Скорость, вместимость и масса

**Крейс. скорость:** 28 Kts. (32 MPH)

**Макс. скорость:** 30 Kts. (35 MPH)

**Вместимость воды:** 100 Gallons

**Вместимость сточного бака:** 30 Gallons

**Объем топливного бака:** 650 Gallons

## Размещение

**Всего кают:** 2

**Всего коек:** 4

**Спальные места:** 5

**Всего ком. состава:** 2

## Корпус и палуба

**Материал корпуса:** Fiberglass

## Информация о двигателе

---

**Двигатели:** 2

**Производитель:** Cummins

**Модель:** QSM11

**Тип двигателя:** Inboard

**Тип топлива:** Diesel

# ПОДРОБНОЕ ОПИСАНИЕ

## Vessel Description

**Vessel Walkthrough** The salon opens up to a "L" shape leather settee to starboard with custom cherry burl wood table and barrel chair to port. An island galley is forward to starboard with refrigeration to port. The salon has carpeted sole and the galley has teak and holly. All wood inside vessel is cherry and has been refurbished. All bulkheads and side panels are Awlgrip painted. Walking down a few steps is the guest head to port with shower and forward in the companion way is a quarter berth. Across from this berth is the Master Stateroom with its own head and shower stall. Forward and in the bow are over and under angled berths. The bridge has a single Blue Water helm chair with bench seating forward of helm and to starboard. • Guest Head: Vanity with Egyptian Lime Stone counter top, drawers and storage cabinet below, shower and painted sole. • Companionway bunk: 1/4 berth with cherry cabinet with four drawers and below berth four drawers and two storage cabinets all in cherry wood plus hatch overhead in companionway. • Master Stateroom: Starboard queen berth, night stand, overhead hatch, lighted cedar-lined hanging locker, recessed lighting, carpeted • Master Head: Teak and Holly sole, vanity with Egyptian Lime Stone counter top, drawer and cabinet under top and shower stall all in a cherry finish accent. • Forward Stateroom: Over and under angled bunks, two drawers & two cabinets under port bunk, one drawer under starboard bunk, two overhead cabinets to the starboard side, lighted cedar-lined hanging locker, forward on bulkhead chain/rope locker door, carpeted sole, over head hatch all accented in a cherry finish. **Galley** • Teak and Holly sole • Egyptian Lime Stone counter top to starboard with under counter sink • Kenyon 220V 3 burner stove • Badger 120V disposal • GFCI electrical outlet • U-Line ice maker **new 07** • GE Microwave **new 07** • Custom refrigerator & freezer located port side all in cherry wood **new 07** • Teak and holly sole • Concealed stove with four drawers below cabinet under sink & 3 drawers, two large storage cabinets along bulkhead • Cabinet under sink & three drawers plus two large storage cabinets along bulkhead **Electronics** • Standard Horizon VHF Flybridge • Standard VHF at steps going down to companionway • Quest VHF in tower • 5" Danforth Hi Speed compass on bridge • 3" Ritchie compass in tower • (2) Furuno MU 120 C XGA 12.1" color Nav/Net display w/2 control panels on flybridge for interfacing and selectively displaying radar, chart, GPS, and sounder information • Furuno BBFF1 NAVSET sounder w/50/200 watt transducer • Furuno 1954 CBB 72 mile, 12kW radar w/6' open array antenna interfaced w/NAVNET multifunction displays • Northstar 6100i w/12" multifunction color display • SIMRAD AP26 autopilot • Sirius Satellite radio • Sirius Marine Satellite weather • Denon DVD (MP3-WMA) • Denon Multi-Zone (AVR-1907) AV surround receiver • Four position speaker box • Electronics mounted in the console in a custom pop-up pod cabinet **ALL ELECTRONICS INSTALLED IN 2007 Electrical/Mechanical** • On demand hot & cold fresh water wash down system for engine room, cockpit, flybridge and tower • Raw water wash down in cockpit • (4) Odyssey batteries • (1) starting battery for generator • On-Off battery switches • 50 Amp shore power • 120V/220V AC/12VDC • Custom BASS electrical panel w/digital meters for AC and DC systems **new 07** • Marine Air 3-zone chilled water air conditioning system w/reverse-cycle heating. Two (24,000 BTU) compressors and 4 cabin air handlers using SMXht/SMX II bulkhead mounted digital key pad controls installed **new in 07** •

Attwood 10.5 gallon hot water heater • On-demand "hot & cold" filtered fresh water system is serviced by a Mach5 Headhunter 115V water pump and Puffer PT-102, 4.4 gallon corrosion resistant accumulator pressure tank and connected via PVC plumbing **new 07** • 20 KW Northern Lights Generator. All wiring, plumbing and exhaust installed **new 07** • Hydraulic Sea Star steering **new 07** • 120V Charles stainless steel 60 amp solid state 12V charger (ss-5000sp) multi-bank charger **new 07** • Charles Marine Isolation power transformer (ISO-BOOST 50) **new 07** • (2) 12V Head Hunter Marine fresh water Royal Flush Toilets **new 07** • Glendenning electric engine controls, cockpit, bridge and tower **installed 07** • Recessed trim tabs **installed 07** • Underwater lights **installed 07** • Sea Recovery Aqua Matic SRC-900-1 (900 GPD) water maker **new in 07** • Eskimo ice maker w/600 lb daily capacity **new in 07** • Tides dripless shaft logs **installed 07** • Delta T Vents **installed 07** • Racor FG 1000 primary remotely mounted fuel filters w/pressure gauges and 12V fuel prime pumps **installed 07** • New exhaust and new muffler system w/muffler cradles and 10" stern pipes **installed 07** • New Parker swaged/threaded diesel fuel supply and return lines for all 3 fuel systems **installed 07** • New port and starboard engine panel w/fuel manifold/shut-off valves **installed 07** • New anti-vibrating engine mounts **installed 07** • New engine room lights, wiring and 120V outlet **07** • New bronze SenDure external water strainers and bronze raw water engine plumbing and valves **installed 07** • New manifold emergency dewater plumbing and valves for each Cummins **installed 07** • New Groco seacocks, new bonding system, wiring and connectors, and all new bronze thru-hulls **installed 07** • Old rudder post were glassed and faired then drilled for new rudder ports **in 07** • 7 old thru-hulls were glassed over, faired and primed. New installed sea clocks are bronze and labeled **in 07** • Refurbished and newly painted sea chest, new seacocks, new plumbing/clamps and new external SenDure strainer all **installed in 07** • QSM 11-M 715 HP **Installed in 2007 (start up date 11/07)** • Quick connects for oil changes **Deck** • Hull painted w/Awlgrip 2000 **in 2007** • Construction of hull is cold molded fir marine plywood triple diagonal planked hull bottom, double diagonal planked top sides and decks using epoxy adhesives throughout. The diagonal planked wood hull is sheathed w/1708 and 1808 woven fiberglass cloth w/45 and 90 degree overlays inside and the exterior is sheathed w/45 and 90 degree overlays of Kevlar cloth and epoxy. The engine and machinery spaces were completely renovated and reprinted w/Awlgrip white polyurethane two part paint. • All grap rails (teak, aluminum and stainless steel) have either been stripped/varnished or painted or replaced • Galley Maid BB240 electric windlass **new in 07** • (3) Bow Deck hatches **refurbished 07** • Teak helm pod with custom bezel • Teak toe rail • The glassed in windshield was refurbished false molding renewed, all was primed, and painted. All cabin house (8 pieces for salon side, aft and door) windows were removed, new custom wood frames and interior cherry molding fabricated and installed, and new custom fit tinted tempered glass panels were installed, all wood was primed and new glass panels bedded in Sikaflex. Cabin door has been refurbished, new window glass and frames installed. All work **completed in 07** • Teak cockpit **replaced in 07** • Teak covering boards **replaced 07** • Fuel tanks replaced in cockpit • Blue Water helm chair (**new 07**) and forward in front of console there are bench seat forward w/beneath storage for gear, PFDs and rods. The bench seats have padded, vinyl covered, removable cushions **new in 07** • Custom 13-step High Seas tuna tower designed and built w/upper and mid molded fiberglass platforms. Molded fiberglass helm console, 3-sided padded vinyl belly band, fiberglass platforms. **New 07** • Engine start and stops on tower, controls and wheel • Bow deck spreader light • 3-sided U-zip Strato Glass enclosure w/3 zip-outs using

slide-in curtains **new 07** • Canvas cover for helm chair, cockpit , tower console and transom • Under gunnel lights and speaker boxes • Engine room access from cockpit **Fishing Equipment** • **New in 07** custom cockpit freezer and drink box, wiring, compressor, and varnished lift top cabinet • 4-drawer tackle cabinet • Custom drop-in/portable fish box plumbed w/a 12V macerator and Eskimo ice machine • Tower mounted cockpit spreader lights • Self-bailing cockpit drains have been enlarged for improved draining • Transom door • Cockpit controls • Rupp outriggers w/center rigger **new in 07** • (2) electric US-9K teaser reels recessed into the bridge top installed with tower • Port and starboard electric reel outlets • (6) rod holders on bridge • (6) rod holders in gunnels • Teak rocket launcher • Custom rod storage in salon sofa

## Исключения

---

При продаже яхты исключаются личные вещи владельца.

## Отказ от ответственности

---

Компания предоставляет описание судна или яхты добросовестно, но не может гарантировать точность этой информации, а также не ручается за техническое состояние. Покупатель должен проинструктировать своих агентов или оценщиков исследовать представленную информацию более подробно, по собственному желанию. Продажа судна или яхты, изменение цены или снятие с продажи будет происходить без предварительного уведомления.

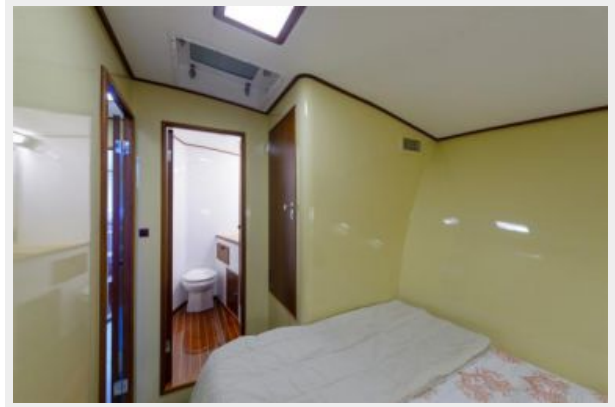
# ФОТОГРАФИИ













# КОНТАКТЫ

---

Андрей Шестаков (Andrey Shestakov) – ведущий яхтенный брокер отдела продаж яхт и судов компании Shestakov Yacht Sales Inc. Официальный представитель Shestakov Yacht Sales Inc. для русскоговорящих клиентов в центральном офисе компании в Майами/Форт Лодердейл/Флорида/США.

## Контактная информация

---

Email: [andrey@shestakovyachtsales.com](mailto:andrey@shestakovyachtsales.com)

Web: [shestakovyachtsales.com](http://shestakovyachtsales.com)

## Телефоны

---

Краснодарский край: **+7(918)465-66-44**

США, Майами, Флорида: **+1(954)274-4435**

## Время работы

---

Понедельник – Суббота: **9:00 - 21:00**  
EDT

Воскресенье: **Закрито**

## Адрес

---



Harbour Towne Marina, 850 NE 3rd St,  
STE 213, Dania, FL 33004