

KILL BOX — JUDGE YACHTS



Судостроитель: JUDGE YACHTS

Год постройки: 2005

Модель: Катер для спортивной рыбалки

Цена: **ЦЕНА ЯХТЫ ПО ЗАПРОСУ**

Местонахождение: United States

Длина общая: 42' 0" (12.80m)

Ширина: 15' 8" (4.78m)

Макс. осадка: 3' 8" (1.12m)

Крейс. скорость: 26 Kts. (30 MPH)

Макс. скорость: 30 Kts. (35 MPH)

Купить Kill Box — JUDGE YACHTS а также выбрать подходящую вам яхту из нашего каталога яхт вам поможет опытный яхтенный брокер Андрей Шестаков. На сегодняшний день компания Shestakov Yacht Sales Inc. имеет большое количество яхт в собственном списке продаж, а также тесно сотрудничает со всеми крупными яхтенными производителями по всему миру.

Для того чтобы купить яхту Kill Box — JUDGE YACHTS а также проконсультироваться по любому вопросу связанному с покупкой, продажей, чартером яхт позвоните по телефону **+7(918)465-66-44**.

ОГЛАВЛЕНИЕ

ОГЛАВЛЕНИЕ	2
ХАРАКТЕРИСТИКИ	5
Обзор	5
Основная информация	5
Размеры	5
Скорость, вместимость и масса	5
Размещение	6
Корпус и палуба	6
Информация о двигателе	6
ПОДРОБНОЕ ОПИСАНИЕ	7
Salon	7
Galley	7
Master Stateroom	7
Guest Stateroom	7
Head	8
Electronics	8
Flybridge	8
Deck & Hull	9
Cockpit	9
Mechanical	9
Electrical	10
Disclaimer	10
Исключения	11
Отказ от ответственности	11
ФОТОГРАФИИ	12
JUDGE YACHTS 42XC Profile	12
JUDGE YACHTS 42XC Stern Profile	12
JUDGE YACHTS 42XC Profile	12

JUDGE YACHTS 42XC Bow Profile	12
JUDGE YACHTS 42XC Cockpit	12
JUDGE YACHTS 42XC Cockpit	12
JUDGE YACHTS 42XC Fighting Chair	13
JUDGE YACHTS 42XC Cockpit	13
JUDGE YACHTS 42XC Cockpit Helm & Bait Station	13
JUDGE YACHTS 42XC Bait Station	13
JUDGE YACHTS 42XC Cockpit	13
JUDGE YACHTS 42XC Cockpit Helm	13
JUDGE YACHTS 42XC Flybridge Seating	14
JUDGE YACHTS 42XC Bow	14
JUDGE YACHTS 42XC Head with Enclosed Shower	14
JUDGE YACHTS 42XC Head	14
JUDGE YACHTS 42XC Salon	14
JUDGE YACHTS 42XC Salon TV	14
JUDGE YACHTS 42XC Master Stateroom	15
JUDGE YACHTS 42XC Master Stateroom	15
JUDGE YACHTS 42XC Lower Helm	15
JUDGE YACHTS 42XC Salon TV	15
JUDGE YACHTS 42XC Helm & Galley	15
JUDGE YACHTS 42XC Helm & Galley	15
JUDGE YACHTS 42XC Salon Seating	16
JUDGE YACHTS 42XC Guest Stateroom	16
JUDGE YACHTS 42XC Companionway	16
JUDGE YACHTS 42XC Guest Stateroom	16
JUDGE YACHTS 42XC Flybridge	16
JUDGE YACHTS 42XC Flybridge	16
JUDGE YACHTS 42XC Guest Stateroom Rod Storage	17
JUDGE YACHTS 42XC Upper Helm	17

JUDGE YACHTS 42XC Tackle & Rod Storage Room	17
JUDGE YACHTS 42XC Cockpit Seating	17
JUDGE YACHTS 42XC	17
JUDGE YACHTS 42XC Upper Helm	17
JUDGE YACHTS 42XC Upper Helm	18
JUDGE YACHTS 42XC Upper Helm	18
JUDGE YACHTS 42XC Bridge Ladder	18
JUDGE YACHTS 42XC Cockpit	18
JUDGE YACHTS 42XC Profile	18
JUDGE YACHTS 42XC Profile	18
JUDGE YACHTS 42XC Profile	19
JUDGE YACHTS 42XC Profile	19
JUDGE YACHTS 42XC Profile	19
JUDGE YACHTS 42XC Engine Room	19
JUDGE YACHTS 42XC Engine Room	19
JUDGE YACHTS 42XC Engine Room	19
JUDGE YACHTS 42XC Engine Room	20
JUDGE YACHTS 42XC Engine Room	20
JUDGE YACHTS 42XC Engine Room	20
JUDGE YACHTS 42XC Layout	20
КОНТАКТЫ	21
Контактная информация	21
Телефоны	21
Время работы	21
Адрес	21

ХАРАКТЕРИСТИКИ

Обзор

The Judge 42XC provides an extreme fishing platform with a comfortable interior for Overnighters and Tournament Fishing. The 42XC has three helms, 2 staterooms, and a large tackle storage room with freezer. Fish in comfort at an economical 26 knots and one of the largest cockpits in its class!

Основная информация

Тип судна: Катер для спортивной рыбалки

Подкатегория: Convertible

Модельный год: 2005

Год постройки: 2005

Страна: United States

Размеры

Длина общая: 42' 0" (12.80m)

Ширина: 15' 8" (4.78m)

Макс. осадка: 3' 8" (1.12m)

Скорость, вместимость и масса

Крейс. скорость: 26 Kts. (30 MPH)

Крейсерская скорость поворота: 2000 Kts.

Макс. скорость: 30 Kts. (35 MPH)

Макс. скорость поворота: 26000 Kts.

Водоизмещение: 26000 Pounds

Вместимость воды: 55 Gallons

Объем топливного бака: 400 Gallons

Размещение

Всего кают: 2

Всего коек: 3

Спальные места: 6

Всего ком. состава: 1

Корпус и палуба

Материал корпуса: Fiberglass

Информация о двигателе

Двигатели: 2

Производитель: Cummins

Модель: 6 CTA 8.3

Тип двигателя: Inboard

Тип топлива: Diesel

ПОДРОБНОЕ ОПИСАНИЕ

Salon

- “L” Shaped Leather Lounge
- Teak & Holly Laminate Throughout
- Flat Screen TV
- Custom Salon Table
- Headliner & Wall Liner Throughout
- 16,000 BTU AC/Heat

Galley

- Solid Surface Counter Top w/Stainless Sink
- Counter Top Lighting
- Recessed Microwave
- Refrigerator
- Teak & Holly Sole
- Storage Cabinets

Master Stateroom

- Access to Anchor Rope Locker
- Flat Screen TV
- Queen Island Bed with Storage Underneath
- 16,000 BTU AC/Heat
- Teak & Holly Sole
- Overhead Hatch
- Reading Lamps

Guest Stateroom

- Double Bunks
- Overhead Lights
- Reading Lights
- Storage Under Lower Berth
- Teak & Holly Sole
- Custom 4” Foam Mattresses
- Tackle Storage Locker Room

Head

- Ground Fault Receptacle
- Lighting
- Medicine Cabinet
- Mirror
- Separate Shower Stall with Automatic Sump Pump
- Towel Bars
- Solid Surface Vanity with Stainless Sink & Storage
- Teak & Holly Sole
- Jabsco Quiet Flush with Holding Tank

Electronics

Lower Helm:

- 10" Furuno Nav Net 2 GPS/Fishfinder/Radar
- 8" Furuno Nav Net 2 GPS/Fishfinder/Radar
- Raymarine ST6002 Auto Pilot
- Icom VHF Radio
- Alpine Stereo Receiver

Upper Helm:

- 2 each 10" Furuno Nav Net 2 GPS/Fishfinder/Radar
- Furuno FCV-295 Color Fishfinder
- Ray Marine ST6002 Auto Pilot with Remote
- Standard Horizon VHF Radio
- Icom VHF Radio with Speaker
- Icom VHF Command Mike to Lower Helm VHF

Flybridge

- Hard Top w/ Aluminum Frame with Bridge Enclosure
- Hard Top Spreader Lights
- Front Console Bench Seat with Cushions
- Bridge Ladder with Safety Rails,
- Custom Welded Rocket Launchers
- Flush Mounted Compass with Light
- Complete Custom Engine Instrument Panel with Audible & Visual Warning System
- Custom switch panels
- Large Electrical Console
- Pompanette Pedestal Mounted Helm & Companion Chairs

- Electronic Controls
- Stainless Steel Helm Wheel

Deck & Hull

- Windlass w/ Pulpit
- Forward Hatch
- Non-skid Surface
- Stainless Steel Bow, Stern & Spring Cleats
- Stainless Steel Stern Hawse Pipes
- Black Powdered Coated Aluminum Windshield
- Custom Window Screen Sunshades
- Windshield Wipers
- Dark Blue Colored Hull (Alexseal)

Cockpit

- Mezzanine Bench Seating
- Cockpit Steering Station
- Pompanette Fighting Chair
- Lee Outriggers
- Custom Bait Station with Stainless Tray
- 21 Each Flush Mounted Rod Holders
- Cockpit Lighting
- Fresh & Raw Water Wash Down
- Shore Power Connection
- Scuppers for Self Bailing Cockpit
- Lee Outriggers

Mechanical

- Acoustical & Thermal Engine Room
- Approx. 400 gallon epoxy coated aluminum fuel tank
- Insulation
- Bright White Gelcoat Finish in Engine Room
- Stainless Steel Shafts
- DripLess Shaft Seals
- Dual Lever Engine Controls
- Engine Alarm System
- Engine Hour Meters
- Fiberglass Mufflers

- Freshwater Tank w/Pressurized Sys. Fuel/Water Separator Filters
- Hydraulic Steering System
- Hydraulic Trim Tabs
- 4 Blade Propellers
- Sea Strainers
- Seacocks, Bronze, on All Through Hulls Below Water Line
- Stainless Steel Rudders
- Stainless Steel Struts
- Automatic/Manual Bilge Pumps (2)
- Trolling Valves
- Twin Cummins QSC 8.3M 500HP Diesel Engines

Electrical

- 30A Dockside Service w/50' Shore Power Cord
- AC Electrical Distribution Panel w/Line Voltage & Load Meter &
- Circuit Breakers
- 31 AGM Batteries w/Box (2)
- Battery Charger
- Battery On/Off Switch
- Battery Paralleling
- Bonded Electrical System w/Transom Zinc Plate
- DC Breaker w/Uninterrupted Power to Bilge Pump
- DC Electrical Distribution Panel w/ Battery Voltage & Load Meters
- Horn
- Ground Fault Receptacles in Galley, Head, Engine Room &
- Lazarette
- Onan 5.5KW Generator
- Water Heater 6 gallon
- Interior Lighting Throughout

Disclaimer

While we attempt to display current and accurate data, this listing may not reflect the most recent transactions or may contain occasional data entry errors. Selling agent makes no warranties, express or implied, regarding the content or availability of the products described herein. All inventory listed is subject to availability and prior sale. Please consult selling agent for details. Prices are quoted for the USA only and may not include transportation, taxes, or other applicable charges. Photographs may be representative only and may vary somewhat from the actual items offered for sale. We will not be responsible for inaccurate data obtained from our site. Please check with your local dealer to ensure that you have the latest information available. Information

on this web site could include technical inaccuracies or typographical errors. Changes may be periodically made to the information or the products herein. Questions or comments regarding these policies may be directed to website hosting agent.

Исключения

При продаже яхты исключаются личные вещи владельца.

Отказ от ответственности

Компания предоставляет описание судна или яхты добросовестно, но не может гарантировать точность этой информации, а также не ручается за техническое состояние. Покупатель должен проинструктировать своих агентов или оценщиков исследовать представленную информацию более подробно, по собственному желанию. Продажа судна или яхты, изменение цены или снятие с продажи будет происходить без предварительного уведомления.

ФОТОГРАФИИ

JUDGE YACHTS 42XC Profile



JUDGE YACHTS 42XC Stern Profile



JUDGE YACHTS 42XC Profile



JUDGE YACHTS 42XC Bow Profile



JUDGE YACHTS 42XC Cockpit



JUDGE YACHTS 42XC Cockpit



JUDGE YACHTS 42XC Fighting Chair



JUDGE YACHTS 42XC Cockpit



JUDGE YACHTS 42XC Bait Station



JUDGE YACHTS 42XC Cockpit Helm & Bait Station



JUDGE YACHTS 42XC Cockpit



JUDGE YACHTS 42XC Cockpit Helm



JUDGE YACHTS 42XC Flybridge Seating



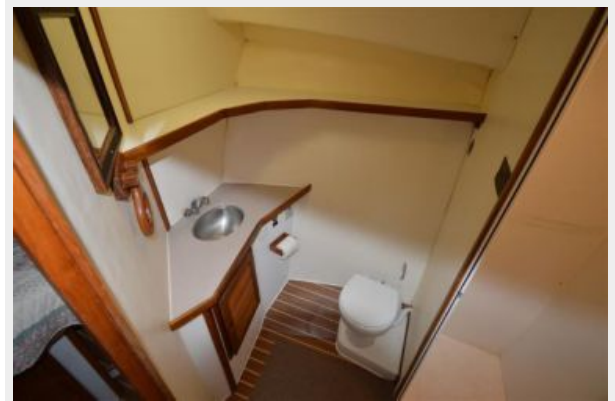
JUDGE YACHTS 42XC Bow



JUDGE YACHTS 42XC Head with Enclosed Shower



JUDGE YACHTS 42XC Head



JUDGE YACHTS 42XC Salon



JUDGE YACHTS 42XC Salon TV



JUDGE YACHTS 42XC Master Stateroom



JUDGE YACHTS 42XC Master Stateroom



JUDGE YACHTS 42XC Lower Helm



JUDGE YACHTS 42XC Salon TV



JUDGE YACHTS 42XC Helm & Galley



JUDGE YACHTS 42XC Helm & Galley



JUDGE YACHTS 42XC Salon Seating



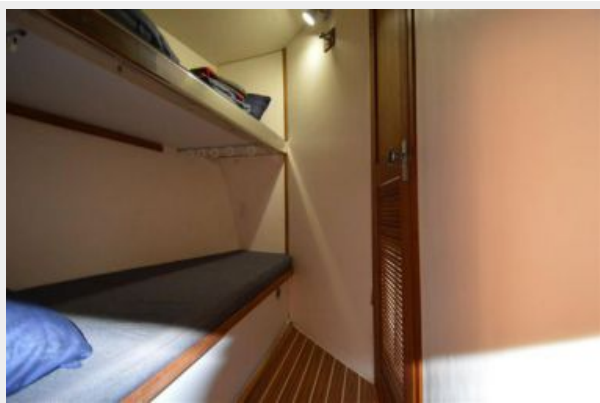
JUDGE YACHTS 42XC Guest Stateroom



JUDGE YACHTS 42XC Companionway



JUDGE YACHTS 42XC Guest Stateroom



JUDGE YACHTS 42XC Flybridge



JUDGE YACHTS 42XC Flybridge



JUDGE YACHTS 42XC Upper Helm



**JUDGE YACHTS 42XC Guest Stateroom
Rod Storage**



**JUDGE YACHTS 42XC Tackle & Rod
Storage Room**



JUDGE YACHTS 42XC Cockpit Seating



JUDGE YACHTS 42XC



JUDGE YACHTS 42XC Upper Helm



JUDGE YACHTS 42XC Upper Helm



JUDGE YACHTS 42XC Upper Helm



JUDGE YACHTS 42XC Bridge Ladder



JUDGE YACHTS 42XC Cockpit



JUDGE YACHTS 42XC Profile



JUDGE YACHTS 42XC Profile



JUDGE YACHTS 42XC Profile



JUDGE YACHTS 42XC Profile



JUDGE YACHTS 42XC Profile



JUDGE YACHTS 42XC Engine Room



JUDGE YACHTS 42XC Engine Room



JUDGE YACHTS 42XC Engine Room



JUDGE YACHTS 42XC Engine Room



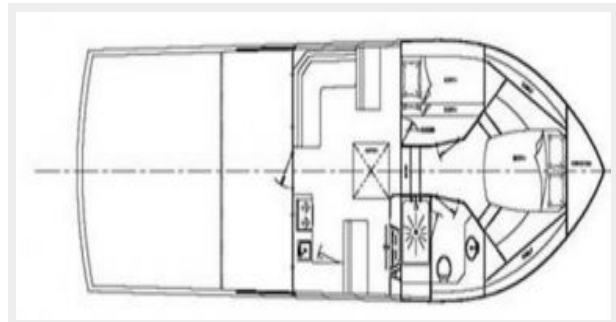
JUDGE YACHTS 42XC Engine Room



JUDGE YACHTS 42XC Engine Room



JUDGE YACHTS 42XC Layout



КОНТАКТЫ

Андрей Шестаков (Andrey Shestakov) – ведущий яхтенный брокер отдела продаж яхт и судов компании Shestakov Yacht Sales Inc. Официальный представитель Shestakov Yacht Sales Inc. для русскоговорящих клиентов в центральном офисе компании в Майами/Форт Лодердейл/Флорида/США.

Контактная информация

Email: andrey@shestakovyachtsales.com

Web: shestakovyachtsales.com

Телефоны

Краснодарский край: **+7(918)465-66-44**

США, Майами, Флорида: **+1(954)274-4435**

Время работы

Понедельник – Суббота: **9:00 - 21:00**
EDT

Воскресенье: **Закрыто**

Адрес



Harbour Towne Marina, 850 NE 3rd St,
STE 213, Dania, FL 33004