

44FT 2013 ATLANTIS AZIMUT — ATLANTIS YACHTS



Builder: ATLANTIS YACHTS

LOA: 44' 0" (13.41m)

Year Built: 2013

Beam: 13' 11" (4.24m)

Model: Cruiser

Price: PRICE ON APPLICATION

Location: United States

Our experienced yacht broker, Andrey Shestakov, will help you choose and buy a yacht that best suits your needs 44ft 2013 Atlantis Azimut — ATLANTIS YACHTS from our catalogue. Presently, at Shestakov Yacht Sales Inc., we have a wide variety of yachts available on our sale's list. We also work in close contact with all the big yacht manufacturers from all over the world.

If you would like to buy a yacht 44ft 2013 Atlantis Azimut — ATLANTIS YACHTS or would like help answering any questions concerning purchasing, selling or chartering a yacht, please call +1(954)274-4435

TABLE OF CONTENTS

TABLE OF CONTENTS	2
SPECIFICATIONS	5
Basic Information	5
Dimensions	5
Speed, Capacities and Weight	5
Accommodations	5
Hull and Deck Information	5
Engine Information	5
DETAILED INFORMATION	6
Upgrades	6
Design and Construction	6
Decor	6
Helm station	7
Galley	7
Dinette	7
Master Cabin	7
Master Cabin Head / Bathroom	8
VIP Cabin	8
VIP / Day Head / Bathroom	8
Engine Room	9
Supplementary Equipment	9
Water and bilge system	9
Electrical System	10
Cruise - Estimated	10
Fuel System	10
Tanks	10
Generator	10
Exclusions	10

Disclaimer	11
PHOTOS	12
Starboard Running Profile	12
Starboard Profile	12
Starboard Profile	12
Starboard Profile	12
Helm	12
Helm	12
Helm	13
Port Sunpad	13
Facing Forward	13
Cockpit	13
Port Settee	13
Facing Forward - Cabin	13
Facing Starboard - Settee	14
Galley / Two refrigerators-freezers under	14
Facing Port - Galley	14
Salon / Galley - Facing Aft	14
Full Beam Master Stateroom	14
Full Beam Master Stateroom	14
Full Beam Master Stateroom	15
Master Stateroom ensuite Head / Shower	15
Forward VIP Berth with entrance to head/shower	15
Forward VIP Berth facing aft	15
Day Head / Shower	15
Starboard Wet-bar & Cooktop	15
Stern	16
Aft Facing Sunpad	16
Bow	16

Bow	16
Kohler 10 kW Generator	16
Volvo Penta D6 - 400's	16
CONTACTS	17
Contact details	17
Telephones	17
Office hours	17
Address	17

SPECIFICATIONS

Basic Information

Category: Cruiser

Sub Category: Express

Model Year: 2013

Year Built: 2013

Country: United States

Dimensions

LOA: 44' 0" (13.41m)

Beam: 13' 11" (4.24m)

Speed, Capacities and Weight

Water Capacity: 92 Gallons

Fuel Capacity: 237 Gallons

Accommodations

Total Cabins: 2

Total Heads: 2

Hull and Deck Information

Hull Material: Fiberglass

Engine Information

Engines: 2

Manufacturer: Volvo

Model: D-6 400

Engine Type: Inboard

Fuel Type: Diesel

DETAILED INFORMATION

Upgrades

- Air conditioning system in cockpit
- Bow thruster
- Customized Stereo system
- Telescopic retracting electrohydraulic gangway
- Chain counter with remote control
- Search light with remote control
- GPS/Chart plotter Raymarine E120W
- Radar Raymarine 23nm
- Joystick for Volvo Aquamatic system
- Teak laid side decks
- Bow shower (cold water only)
- Ice maker in cockpit
- Cockpit fridge
- BBQ in cockpit
- Teak cockpit table
- Contemporary Décor
- Additional fridge in galley
- Wooden dinette flooring
- Audio/video entertainment system
- TV SAT antenna (diameter 37)
- Dinette conversion into double berth

Design and Construction

- Hull: made by infusion, vinyl ester resin on the outer layers, PVC sandwich on the bulwarks and engine room floor.
- Architecture with structural spider and semistructural tray realized in infusion with PVC sandwich.
- Deep V hull, variable geometry, 15° stern deadrise.
- Deck: infusion with PVC sandwich

Decor

- Interior cushions
- Microfiber upholstered bed frame and headboard
- Furniture, doors and wall coverings of natural oak and lacquered finishes, with microfiber fabric panels

- Carpeted floors
- Ceilings covered with microfiber
- Aluminum venetian blinds

Helm station

- Teak footrests with locker
- Remote controlled fire extinguisher in engine room
- Dash and panel painted with opaque anti-glare coating
- 12V outlet
- VHF
- Double driver's chair with folding seat
- Side pocket for miscellaneous items

Galley

- Extractor hood
- 220V combined microwave/grill oven
- 2 Built-in refrigerator
- Recessed LED lighting
- Stainless steel sink
- Wall cupboards, below-counter units and utensil storage compartment along the side
- Two-burner glass-ceramic cooktop with pan guard
- Laminate counter top

Dinette

- Direct access to day head/shower
- Fabric-covered sofa with lockers
- Natural oak steps leading below
- Recessed LED and halogen lighting
- Stainless steel portholes with mosquito screens
- Wall cupboards for stowage
- Fold-up wooden table with steel fixed support
- Electrical switchboard with AC/DC magnetothermal protection
- Stainless steel handrail on access stairs
- 1 kg fire extinguisher

Master Cabin

- Wardrobe/TV unit facing bed
- Fixed lateral windows
- Recessed halogen lighting and night lights
- Double bed with mattress
- Reading lights
- Stainless steel portholes with mosquito screens
- 220V outlet
- Bulkhead mirror
- Microfiber-upholstered bed frame and headboard
- Compartments along the walls

Master Cabin Head / Bathroom

- Separate glass shower stall, shower with slide bar and furniture unit with open compartments
- Teak shower grating
- Recessed halogen lighting
- Furniture unit with sink
- Stainless steel porthole with mosquito screen
- Wall cabinet with mirrors
- 220V outlet
- Fresh-water electric toilet

VIP Cabin

- Direct access to day bathroom
- Wardrobe along Port wall with internal lighting and door-mounted mirror and along Starboard wall with exposed shelves and door-mounted mirror
- Fixed lateral windows
- Recessed halogen lighting and night lights
- Double bed with mattress, bedspread and pillows
- Reading lights
- Stainless steel portholes with mosquito screens
- Wall cabinets
- 220V outlet
- Bulkhead mirror
- GRP bed structure with container unit and locker
- Microfiber-upholstered bed frame and headboard

VIP / Day Head / Bathroom

- Transparent plexiglass shower stall and rainfall showerhead
- Teak shower grating
- Furniture unit with sink
- Stainless steel porthole with mosquito screen
- Wall cabinet with mirrors
- 220V outlet
- Fresh-water electric toilet

Engine Room

- Twin Volvo Penta D-6 EVC DP with 10 original hours
- **2 Year Volvo Factory Warranty on engines and transmissions**
- Access hatch from cockpit
- Ceiling lighting with automatic lamp lighting when access hatch is opened
- Automatic/manual firefighting system
- Engine installation on anti-vibration mounts
- Thermal and acoustic insulation
- Removable panel in locker beneath sunlounger for maintenance
- 220V outlet
- Safety valves on sea cocks

Supplementary Equipment

- Dock cable
- Docking ropes
- Owner's manual
- Boat hook
- Fenders

Water and bilge system

- Bilge alarm in interior rooms and engine room with visual and acoustic indicator on helm console
- By-pass for direct dock connection
- Automatic pressure pump in engine room with filter and shutoff valve on hot/cold water system for each room
- Automatic electric bilge pump for internal compartments
- Electric bilge pump for engine room with automatic and/or manual operation with control on helm console
- Manual bilge pump for internal compartments
- Manual bilge pump for engine room

- Special electric pump for sucking up oil and fuel from recovery tanks beneath the engines
- Pump in engine room for emptying grey water system
- Grey water collection tanks from interior rooms
- Fresh water tank

Electrical System

- 12V generator battery (1)
- 12V engine battery (1)
- 12V utilities batteries (2)
- Automatic battery charger, 12V – 80 Ah

Cruise - Estimated

- Cruising Speed: 33 knot - 37 mph
- Max Speed: 36 knot - 41.4 mph

Fuel System

- Solenoid valves on fuel lines for immediate fuel shutoff
- Diesel strainer filters water separators with drain cock (2)
- Stainless steel tanks (2 x 450 l) with visual indicator on both, probe for indicator on helm console and communication system with shutoff valves
- Fuel tank breather (2)
- Type-approved fuel hoses

Tanks

- Fuel: 900 Liters - 238 Gallons
- Fresh Water: 350 Liters - 92 Gallons

Generator

- Kohler Generator
- 1290 Hours

Exclusions

Owner's personal belongings.

Disclaimer

The Company offers the details of this vessel or yacht in good faith but cannot guarantee or warrant the accuracy of this information nor warrant the condition of the vessel. A buyer should instruct his representatives, agents, or his surveyors, to investigate such details as the buyer desires validated. This vessel or yacht is offered subject to prior sale, price change, or withdrawal without notice.

PHOTOS

Starboard Running Profile



Starboard Profile



Starboard Profile



Starboard Profile



Helm



Helm



Helm



Port Sunpad



Facing Forward



Cockpit



Port Settee



Facing Forward - Cabin



Facing Starboard - Settee



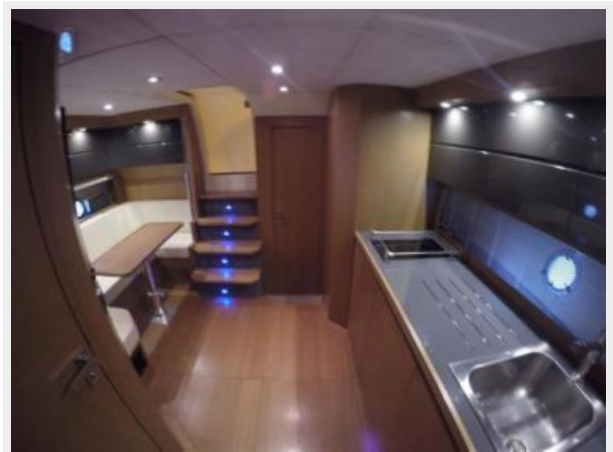
Galley / Two refrigerators-freezers under



Facing Port - Galley



Salon / Galley - Facing Aft



Full Beam Master Stateroom



Full Beam Master Stateroom



Full Beam Master Stateroom



Master Stateroom ensuite Head / Shower



Forward VIP Berth with entrance to head/shower



Forward VIP Berth facing aft



Day Head / Shower



Starboard Wet-bar & Cooktop



Stern



Aft Facing Sunpad



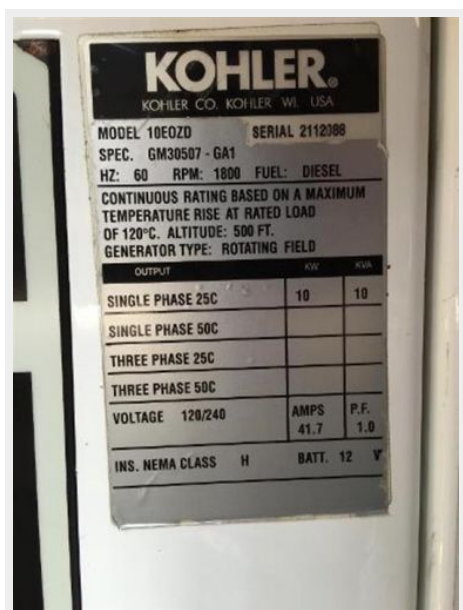
Bow



Bow



Kohler 10 kW Generator



Volvo Penta D6 - 400's



CONTACTS

Andrey Shestakov, leading yacht broker of the sales department of Shestakov Yacht Sales Inc. Shestakov Yacht Sales Inc., the official representative of the Miami/Fort Lauderdale FL headquarters.

Contact details

Email: andrey@shestakovyachtsales.com

Web: shestakovyachtsales.com/en/

Telephones

USA: +1(954)274-4435

Office hours

Monday – Saturday: **9:00 - 21:00** EDT

Sunday: **closed**

Address



Harbour Towne Marina, 850 NE 3rd St,
STE 213, Dania, FL 33004