

SEAS THE DAY II — MERIDIAN



Builder: MERIDIAN

Year Built: 2011

Model: Motor Yacht

Price: PRICE ON APPLICATION

Location: United States

LOA: 44' 0" (13.41m)

Beam: 14' 3" (4.34m)

Min Draft: 3' 1" (0.94m)

Our experienced yacht broker, Andrey Shestakov, will help you choose and buy a yacht that best suits your needs **Seas The Day II — MERIDIAN** from our catalogue. Presently, at Shestakov Yacht Sales Inc., we have a wide variety of yachts available on our sale's list. We also work in close contact with all the big yacht manufacturers from all over the world.

If you would like to buy a yacht **Seas The Day II — MERIDIAN** or would like help answering any questions concerning purchasing, selling or chartering a yacht, please call **+1(954)274-4435**

TABLE OF CONTENTS

TABLE OF CONTENTS	2
SPECIFICATIONS	4
Overview	4
Basic Information	4
Dimensions	4
Speed, Capacities and Weight	5
Accommodations	5
Hull and Deck Information	5
Engine Information	5
DETAILED INFORMATION	6
Overview	6
Salon	6
Dinette	7
Galley	7
Master Stateroom	7
Master Head	7
Guest Stateroom	8
Guest Head	8
Helm	8
Flybridge	8
Electronics	9
Electrical System	10
Engine Room	10
Cockpit	10
Decks	11
Exclusions	11
Broker's Remarks	11
Exclusions	11

Disclaimer	11
PHOTOS	12
CONTACTS	23
Contact details	23
Telephones	23
Office hours	23
Address	23

SPECIFICATIONS

Overview

2012 Meridian 441 Sedan Bridge in like new condition

Yacht Controller wireless docking system

Upgraded Cummins 480 QSB dts electronic diesel engines (130 hrs)

Enhanced Electronics with Flir night vision

Bow & Stern Thrusters

Stored in a covered slip

Bring your offer

Basic Information

Category: Motor Yacht

Sub Category: Sedan Cruiser

Model Year: 2012

Year Built: 2011

Country: United States

Vessel Top: Bimini Top

Dimensions

LOA: 44' 0" (13.41m)

Beam: 14' 3" (4.34m)

Min Draft: 3' 1" (0.94m)

Clearance: 19' 6" (5.94m)

MFG Length: 47' 2" (14.38m)

Speed, Capacities and Weight

Displacement: 31233 Pounds

Gross Tonnage: 33 Pounds

Water Capacity: 150 Gallons

Holding Tank: 55 Gallons

Fuel Capacity: 432 Gallons

Accommodations

Total Cabins: 2

Sleeps: 6

Total Heads: 2

Hull and Deck Information

Hull Material: Fiberglass

Engine Information

Engines: 2

Manufacturer: Cummins

Model: QSB 5.9

Engine Type: Inboard

Fuel Type: Diesel

DETAILED INFORMATION

Overview

The Meridian 441 is a good looking spacious yacht with a very open layout. Large built in swim platform with easy access to the cockpit. In the cockpit you have built in seating along with storage, easy access to the bow and stairs taking you up to the bridge. The cockpit floor has a large opening to stairs leading to the very accessible engine room. Open the stainless sliding doors and you enter the main salon. You have 360 degree views and an abundance of natural lighting. There is an Ultra Leather L shaped sofa to starboard and 2 lounge chairs to port along with a built in ice maker, flat screen TV and full entertainment center. One step up will bring you to the full Galley to port with an extremely accessible convertible dinette to starboard. You will see granite countertops and beautiful wood flooring. Down the companionway to starboard you have a very open VIP stateroom with Island berth, oversized hanging lockers, built in sofa and a large panoramic window. Forward to starboard you have a full sized guest head with stall shower and forward from there you have the completely private Master Stateroom with en-suite head, (2) hanging lockers, natural lighting, built in storage and flat screen TV with DVD/Satellite. Back outside and up-top to the bridge you have another full area for relaxing and entertaining. (2) Marine Air Conditioning units keep it cool in the summer and warm in the winter. There is seating for 8, a flat screen TV, refrigerator and table that converts to a large sunning pad. What a great yacht for entertaining and cruising comfortably.

Salon

Sony Flat Screen T.V.

Bose Radio

In Motion Satellite T.V.

L-Shaped Sofa Seating

Built In Incliners for Sofa

Custom Hi-Low Table

Open & Airy Layout with 360 Degree Views

Carpet Liners

Excellent Head Room

Large Opening Aft Doors

Reverse Cycle Air Conditioning & Heat

Central Vacuum System

Built In Ice Maker

Dinette

Wrap Around Seating

Dinette Converts to Double Berth

Built In storage

Excellent view

Galley

Galley Up Layout

Beautiful Wood Flooring

Norcold Refrigerator/Freezer

Convection Grill/Microwave

Built In Storage

Master Stateroom

Large Island Berth

Opening Hatch

(2) Opening Port Lights

Built In Storage

En-Suite Head

Marine Air Conditioning & Heat

Entertainment System 19" LCD AM/FM/CD/DVD

Master Head

Stall Shower

VacuFlush Head

Granite Counter tops

Opening Port Light

Guest Stateroom

Full Beam Guest Stateroom

Entertainment System 19" LCD TV

Built In hanging locker

built in vanity

Large windows for natural lighting

Guest Head

Vacu flush Head

Shower Head Combination

Vanity with storage

Helm

Full Instrumentation with Smartcraft

Raymarine E-125's

DTS Engine Controls

Bow & Stern Thruster

Trim Tab Control

Oversized Helm seat

Flybridge

Bimini Top with full enclosures

Radar Arch

(2) Bridge air conditioning and heating Units

Refrigerator

Stereo system

Lay in carpet

Lounge seating

Table that converts to sun lounge

Flat Screen TV

Blue LED Courtesy Lights

Electronics

(2) 12" Raymarine E-125's (touch screen)

48 Mile radar

Chartplotter

vhf radio

4kw open array radar

raymarine autopilot

In- Motion Satellite T.V.

Flir Night Vision

Yacht Controller Docking System

Dragon Fly Side Scan Depth Finder

AIS

Remote Spotlight

Raymarine Depth Finder

Rear Camera & Aft camera

Electrical System

Upgraded 13.5 Kw Onan diesel generator

50 AMP Shore Power Cord with Cable Master

Multiple Automatic Battery chargers

Washer dryer combo

Engine Room

Twin Cummins QSB 5.9 480 Hp engines

Extremely clean engine room

Automatic fire suppression system

Dual fuel racors

Cockpit

Aft Seating

Built In Storage

Rod Holder

LED Lights

Stainless Steel Gas Grill

Walk thru door to swim platform

Switches for underwater lights

Stairs to bridge

Easy & safe access to bow

Large swim platform

Aft storage compartment

Freshwater/cable hookup and shore power cord

Decks

Heavy nonskid on decks

Oversized stainless steel cleats

Electric windlass with large anchor

Exclusions

Seller's person items

Broker's Remarks

Pre-owned boat in like new condition. always in a covered slip with extremely low hours. many upgrades and ready to enjoy. Offers encouraged, please call for more details.

Exclusions

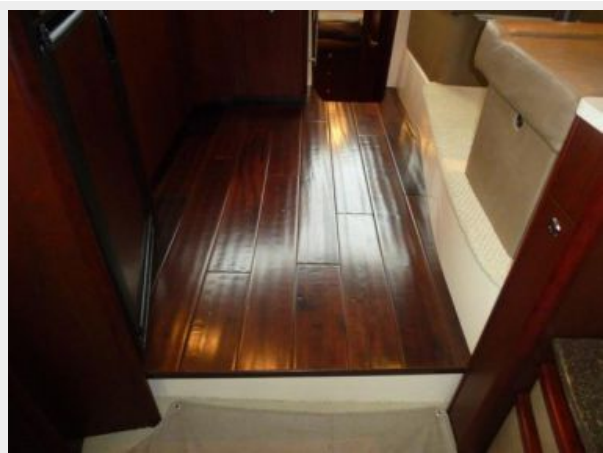
Owner's personal belongings.

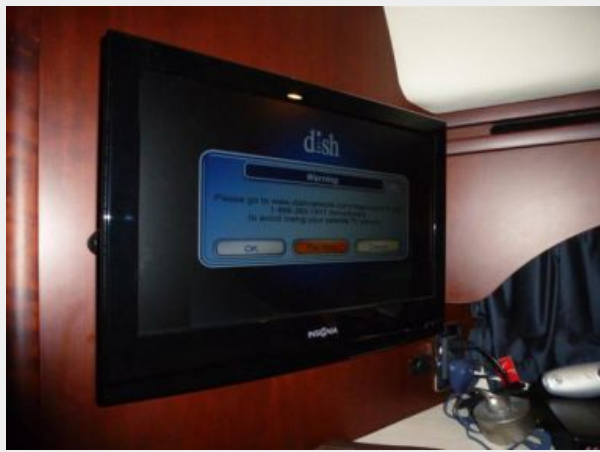
Disclaimer

The Company offers the details of this vessel or yacht in good faith but cannot guarantee or warrant the accuracy of this information nor warrant the condition of the vessel. A buyer should instruct his representatives, agents, or his surveyors, to investigate such details as the buyer desires validated. This vessel or yacht is offered subject to prior sale, price change, or withdrawal without notice.

PHOTOS























CONTACTS

Andrey Shestakov, leading yacht broker of the sales department of Shestakov Yacht Sales Inc. Shestakov Yacht Sales Inc., the official representative of the Miami/Fort Lauderdale FL headquarters.

Contact details

Email: andrey@shestakovyachtsales.com

Web: shestakovyachtsales.com/en/

Telephones

USA: +1(954)274-4435

Office hours

Monday – Saturday: **9:00 - 21:00** EDT

Sunday: **closed**

Address



Harbour Towne Marina, 850 NE 3rd St,
STE 213, Dania, FL 33004