

2016 MARITIMO 65' CRUISING MY — MARITIMO



Builder: MARITIMO

Year Built: 2015

Model: Motor Yacht

Price: PRICE ON APPLICATION

Location: United States

LOA: 65' 0" (19.81m)

Beam: 18' 8" (5.69m)

Max Draft: 5' 0" (1.52m)

Our experienced yacht broker, Andrey Shestakov, will help you choose and buy a yacht that best suits your needs 2016 Maritimo 65' Cruising MY — MARITIMO from our catalogue. Presently, at Shestakov Yacht Sales Inc., we have a wide variety of yachts available on our sale's list. We also work in close contact with all the big yacht manufacturers from all over the world.

If you would like to buy a yacht 2016 Maritimo 65' Cruising MY — MARITIMO or would like help answering any questions concerning purchasing, selling or chartering a yacht, please call +1(954)274-4435

TABLE OF CONTENTS

TABLE OF CONTENTS	2
SPECIFICATIONS	4
Overview	4
Basic Information	4
Dimensions	4
Speed, Capacities and Weight	4
Accommodations	5
Hull and Deck Information	5
Engine Information	5
DETAILED INFORMATION	6
Standard Features	6
Factory Installed Options	6
Special Order Items	7
Engines	7
Disclaimer	7
Exclusions	7
Disclaimer	7
PHOTOS	8
Galley	8
Salon	8
Master Stateroom	8
Master Stateroom	8
Master Stateroom	8
Master Stateroom	8
Master Stateroom	9
Master Stateroom	9
Master Head	9
VIP Stateroom	9

VIP Head	10
Forward Statroom	10
Forward Statroom	10
Forward Statroom	10
Day Head	11
Helm	11
Enclosed Flybridge	11
Enclosed Flybride	11
Flybridge Balcony	11
Cockpit	11
Bow	12
Running Shot	12
Running Shot	12
Running Shot	12
Overhead	12
STBD Side Profile	12
Port Side Profile	13
Running Shot	13
Transom Profile	13
Running Shot	13
Running Shot	14
CONTACTS	15
Contact details	15
Telephones	15
Office hours	15
Address	15

SPECIFICATIONS

Overview

Call for boat show pricing!

INTRODUCING THE NEW MARITIMO M65 CRUISING MOTORYACHT

A true head-turner right down to the finest detail, step aboard and you will be immediately captivated by its space - easily accommodating your family in style, safety and comfort for some genuine blue water passage making. With four main cabins, including a full beam master and full beam ensuite, plus a massive galley with domestic sized refrigerators and Miele appliances, you can be the master entertainer or just relax surrounded by family and friends. Maritimo's signature internal staircase leading to a flybridge larger than most others saloons plus options such as convertible berths, relocatable tables and a wet bar, will ensure an apartment feel and every creature comfort while on the sea.

Basic Information

Category: Motor Yacht

Sub Category: Flybridge

Model Year: 2016

Year Built: 2015

Country: United States

Fly Bridge: Yes

Cockpit: Yes

Dimensions

LOA: 65' 0" (19.81m)

Beam: 18' 8" (5.69m)

Max Draft: 5' 0" (1.52m)

Speed, Capacities and Weight

Displacement: 79000 Pounds

Water Capacity: 211 Gallons

Fuel Capacity: 1664 Gallons

Accommodations

Total Cabins: 4

Total Berths: 5

Sleeps: 8

Total Heads: 3

Hull and Deck Information

Hull Material: Fiberglass

Engine Information

Engines: 2

Manufacturer: Caterpillar

Model: C18 CAT 360

DETAILED INFORMATION

Standard Features

- Lower Windscreen Cover - Black Breezway
- Opening Portholes to Master Cabin In Lieu of Fixed
- Miele Package: Two Door Fridge w/Icemaker, Convection, Microwave, Rangehood, Dishwasher to Island Bench, Four Burner Cooktop.
- Air Conditioning to Flybridge 2 x 24,000 BTU
- Air Conditioning to Salon 2 x 24,000 BTU
- Air Conditioning Fwd Cabin 12,000 BTU Split to Starboard Cabin
- Air Conditioning to Master Suite 2 x 12,000 BTU
- Water Tight Collision Bulkheads
- Power Steering - Taken from engine, hydraulic pump
- Battery Charging: Inverter Charger 4Kw - 100 Amp Charger
- Bow Stowage Locker w/Salt Water & freshwater Deck/Anchor wash with divider
- Forward Helm Flybridge 4 sided Enclosed Hardtop
- Electric Sunroof to Hardtop w/Blinds
- Helm Station - Fully Equipped w/Steering, Engine Controls, Engine Instrumentation, 3 x Windscreen Wipers and Washer, Bow and Stern Thruster Controls, Trim Tab Controls, Winch up/down controls, 1 x Navigation Down Light, Horn Control
- Large Dinette Area Vinyl Upholstered Aft of Helm Station, Equipped w/Dining Table, w/Optional Ottomans
- Bar Fridge Stainless Steel Fitted to Flybridge
- Entrainment Unit to Flybridge, 6 Drawers, 2 Cupboards, Vinyl Inlay Top, Hand Rail
- Galley - 25 bottle wine storage, Miele to entertainment unit
- Dishwasher - Miele

Factory Installed Options

- Engine Controls - Portside Cockpit
- CAT 360 Joystick System - Hydraulic Bow and Stern Thrusters (dual lever control to helm and 2 x joystick station)
- Seakeeper Gyro Stabilizer 26,000
- CP to FB S/S gate to Top of Stairs, S/S Fiddle Rail to Dash
- Sliding Windows to Salon and Flybridge
- Upgrade Generators 2 x 21.5 Kw
- Hydraulic Swim Platform w/ Teak Decking
- VIP Cabin - Samsung 26" LED TV
- Flybridge - Samsung 26" LED TV
- Cockpit Speakers - Bose 131 Marine Speakers Incl AMP and Remote
- Underwater LED Lights x 4 Aft Facing (Blue)

- Garmin Electronics Package - 3 x GPSMAP 8015 15" Display, 4Kw Open Ray, GSD24 Sounder Module, GHP12 Autopilot, GHS10 VHF, B258 Transducer, G2 Vision Card
- SeaView Mast for Radar and Sat TV
- Wenge Veneer- Gloss

Special Order Items

- Dimmers for Galley, Salon and Master
- Two Large Ottmans w/Storage
- Roller Shades to Flybrige Port and STBD Windows
- Upper Black Breezway Windscreen Cover Just Forward Windscreen
- Cockpit Table Fixed - high gloss teak
- Folding Cleats to Aft Swim Platform x 2
- Full Length Trash Drawer w/Bin to Island
- Delta T Engine Room Fan System
- Fisher and Pykel Draw Fridge to Island
- S/S Anchor Package

Engines

- Upgraded CAT C18 1150HP Engine Option w/ CAT 360 Joystick System

Disclaimer

The Company offers the details of this vessel in good faith but cannot guarantee or warrant the accuracy of this information nor warrant the condition of the vessel. A buyer should instruct his agents, or his surveyors, to investigate such details as the buyer desires validated. This vessel is offered subject to prior sale, price change, or withdrawal without notice.

Exclusions

Owner's personal belongings.

Disclaimer

The Company offers the details of this vessel or yacht in good faith but cannot guarantee or warrant the accuracy of this information nor warrant the condition of the vessel. A buyer should instruct his representatives, agents, or his surveyors, to investigate such details as the buyer desires validated. This vessel or yacht is offered subject to prior sale, price change, or withdrawal without notice.

PHOTOS

Galley



Salon



Master Stateroom



Master Stateroom



Master Stateroom



Master Stateroom



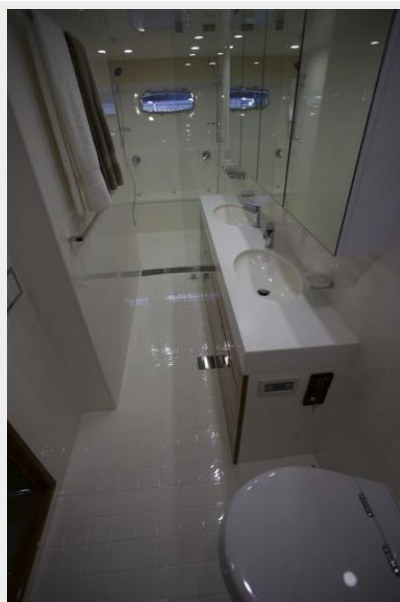
Master Stateroom



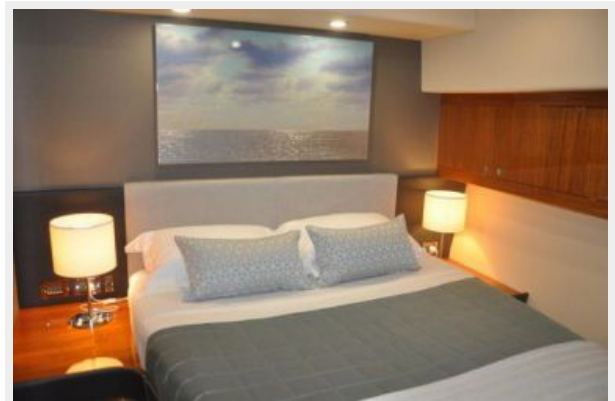
Master Stateroom



Master Head



VIP Stateroom



VIP Head



Forward Statroom



Forward Statroom



Forward Statroom



Day Head



Helm



Enclosed Flybridge



Enclosed Flybride



Flybridge Balcony



Cockpit



Bow



Running Shot



Running Shot



Running Shot



Overhead



STBD Side Profile



Port Side Profile



Running Shot



Transom Profile



Running Shot



Running Shot



CONTACTS

Andrey Shestakov, leading yacht broker of the sales department of Shestakov Yacht Sales Inc. Shestakov Yacht Sales Inc., the official representative of the Miami/Fort Lauderdale FL headquarters.

Contact details

Email: **andrey@shestakovyachtsales.com**

Web: shestakovyachtsales.com/en/

Telephones

USA: **+1(954)274-4435**

Office hours

Monday – Saturday: **9:00 - 21:00 EDT**

Sunday: **closed**

Address



Harbour Towne Marina, 850 NE 3rd St,
STE 213, Dania, FL 33004