

## ALL SET — H&H



**Builder:** [H&H](#)

**Year Built:** 2006

**Model:** Sport Fisherman

**Price:** PRICE ON APPLICATION

**Location:** United States

**LOA:** 32' 0" (9.75m)

**Beam:** 11' 3" (3.43m)

**Max Draft:** 3' 4" (1.02m)

Our experienced yacht broker, Andrey Shestakov, will help you choose and buy a yacht that best suits your needs **All Set — H&H** from our catalogue. Presently, at Shestakov Yacht Sales Inc., we have a wide variety of yachts available on our sale's list. We also work in close contact with all the big yacht manufacturers from all over the world.

If you would like to buy a yacht **All Set — H&H** or would like help answering any questions concerning purchasing, selling or chartering a yacht, please call **+1(954)274-4435**

# TABLE OF CONTENTS

TABLE OF CONTENTS	2
SPECIFICATIONS	3
Overview	3
Basic Information	3
Dimensions	3
Speed, Capacities and Weight	3
Accommodations	4
Hull and Deck Information	4
Engine Information	4
DETAILED INFORMATION	5
Fantastic Downeast	5
New Equipment	5
Electronics	5
Fishing Features	5
Accommodations	6
Tankage	6
Systems	6
Disclaimer	6
Exclusions	7
Disclaimer	7
PHOTOS	8
CONTACTS	22
Contact details	22
Telephones	22
Office hours	22
Address	22

---

# SPECIFICATIONS

---

## Overview

---

Traditional above the waterline and below! H & H Builders' classic skeg-style hull offers the traditional efficiency and performance found in a true **Downeast Osmond Beal** design. A full keel, with an integral skeg to protect the propeller and rudder, combined with the easy motion of a semi-displacement and a semi-hard chine hull style make for an extremely stable, comfortable working platform. Stable, seaworthy, efficiency, easy to maneuver: all reasons why **H & H Marine** has become a leader in the industry. **Building quality with Downeast Pride!**

**Bring your offer! Seller's new boat has arrived and he needs to move this awesome Down East with rare Custom Tower!**

**Seller is willing to pay to have the tower removed for shipping, if need be(it's easily re-installed).**

**Seller willing to help with transport to Northeast or Gulf Coast.**

## Basic Information

---

**Category:** Sport Fisherman

**Sub Category:** Convertible

**Model Year:** 2006

**Year Built:** 2006

**Country:** United States

## Dimensions

---

**LOA:** 32' 0" (9.75m)

**Beam:** 11' 3" (3.43m)

**Max Draft:** 3' 4" (1.02m)

## Speed, Capacities and Weight

---

**Displacement:** 15000 Pounds

**Water Capacity:** 40 Gallons

**Fuel Capacity:** 125 Gallons

---

## Accommodations

---

**Total Cabins:** 1

---

## Hull and Deck Information

---

**Hull Material:** Fiberglass

---

## Engine Information

---

**Manufacturer:** Yanmar

**Model:** 6LVASTP

**Engine Type:** Inboard

**Fuel Type:** Diesel

---

# DETAILED INFORMATION

---

---

## Fantastic Downeast

---

This downeast beauty has been pampered and updated. Many new features: Tuna Tower, Electronics, AC, 2- 8D. Full river DC maintenance free batteries (purchased 7/14; warranted for 5 years).

Her spacious cabin, outriggers, many rod holders, and fighting chair make her a fishing machine!

Her cruising speed is 16 knots at 3000 RPM; 3100 continuous operating rating with 3300 RPM at her top end. She'll get you there!

Seller is motivated and would be open to negotiation of delivery to the East or Gulf coast. Call today!

---

## New Equipment

---

- March 2014 tuna tower and rigging installed with canopy and cushions--over \$25,000. Joystick control and Garmin 740S up top.
- AC installed June 2014.

---

## Electronics

---

### Helm

- Dual Raymarine E120's, 10' displays, fully interfaced with Sounder, Radar, and Simrad AutoPilot.
- Garmin 498 as backup.
- ICOM IC-M602 VHF
- Stereo and CD player

### Tower

- Garmin 740 S Combo Sounder and GPS
- Joystick power steering control
- Bow thruster control
- Morse engine controls
- VHF radio

---

## Fishing Features

---

- Spotlights
- 2 cockpit outlets for electric reels
- 2 swivel rod holders for bent butt rods
- Full cockpit and side lighting for night fishing
- 2 live bait wells with separate pumps
- Saltwater wash down

---

## Accommodations

---

Spacious cabin with generous storage and huge freshwater (no smell) head with shower.

---

## Tankage

---

- 15 gallon holding tank with overboard or dockside pump out
- 2-125 gallon fiberglass fuel tanks with cockpit fills to allow manual measurement of fuel levels

---

## Systems

---

- Steering-Hydroslave Hydraulic power steering turn full port or starboard from center with only one full revolution of the the wheel. Joystick control from the tower.
- 3 Auto electric bilge pumps, with high water alarm
- Vetus Bow thruster controlled from inside helm and tower.
- Raycore water separator with vacuum gauge.
- Flow scan fuel flows measurement systems.
- 30 AMP shore power
- 2-22lb. claw anchors with rhodes.

---

## Disclaimer

---

While we attempt to display current and accurate data, this listing may not reflect the most recent transactions or may contain occasional data entry errors. Selling agent makes no warranties, express or implied, regarding the content or availability of the products described herein. All inventory listed is subject to availability and prior sale. Please consult selling agent for details. Prices are quoted for the USA only and may not include transportation, taxes, or other applicable charges. Photographs may be representative only and may vary somewhat from the actual items offered for sale. We will not be responsible for inaccurate data obtained from our site. Please check with your local dealer to ensure that you have the latest information available. Information on this web site could include technical inaccuracies or typographical errors. Changes may be periodically made to the information or the products herein. Questions or comments regarding these policies may be directed to website hosting agent.

---

## Exclusions

---

Owner's personal belongings.

---

## Disclaimer

---

The Company offers the details of this vessel or yacht in good faith but cannot guarantee or warrant the accuracy of this information nor warrant the condition of the vessel. A buyer should instruct his representatives, agents, or his surveyors, to investigate such details as the buyer desires validated. This vessel or yacht is offered subject to prior sale, price change, or withdrawal without notice.

# PHOTOS

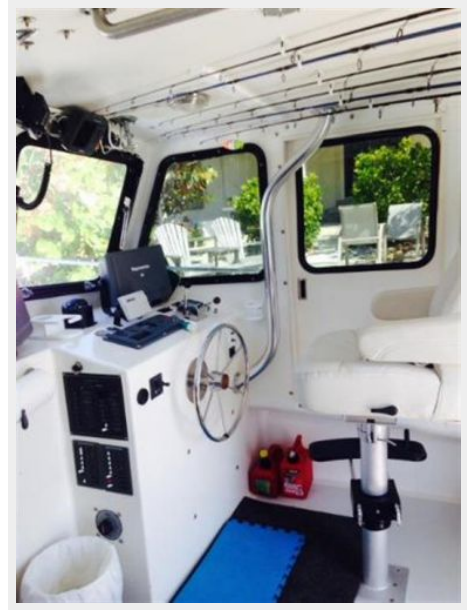












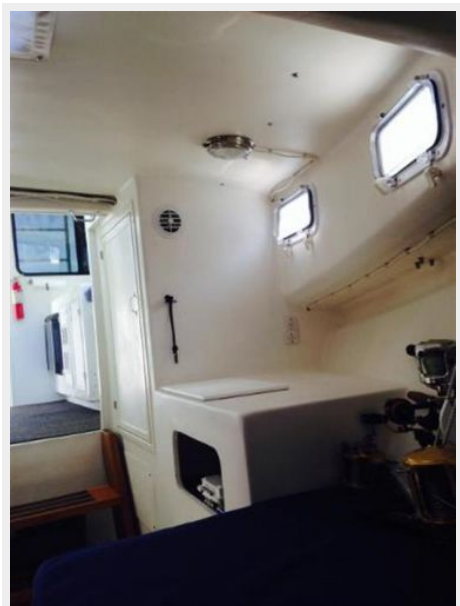




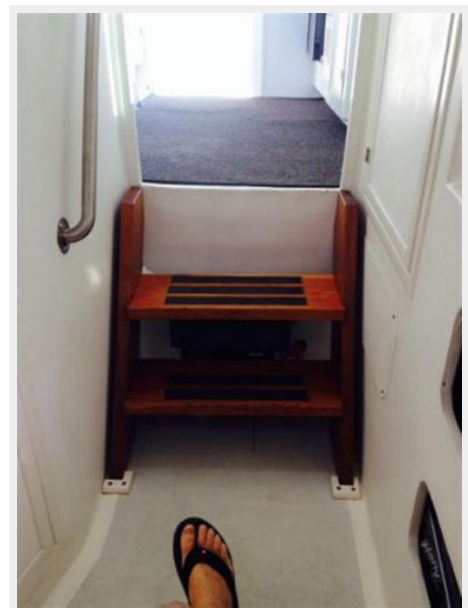
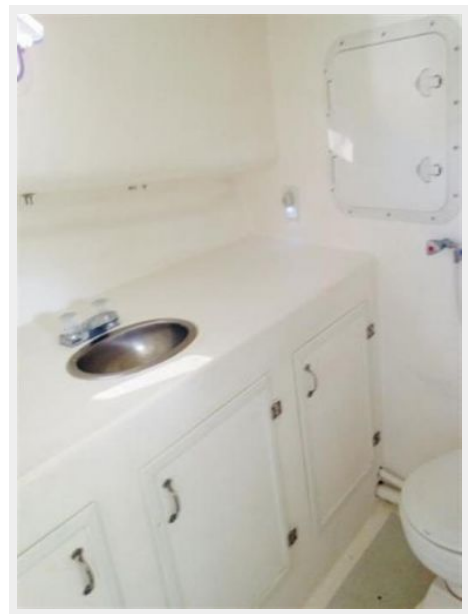








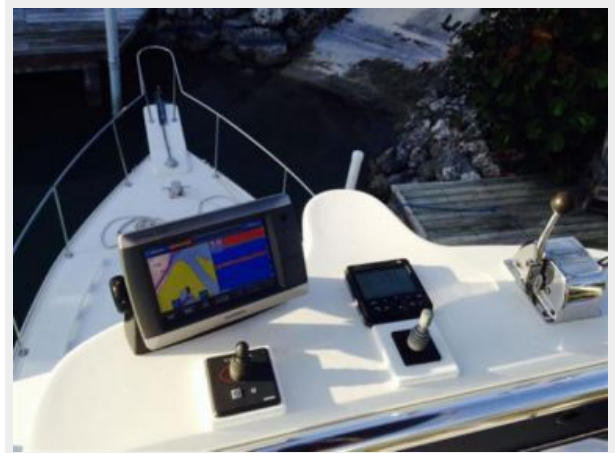


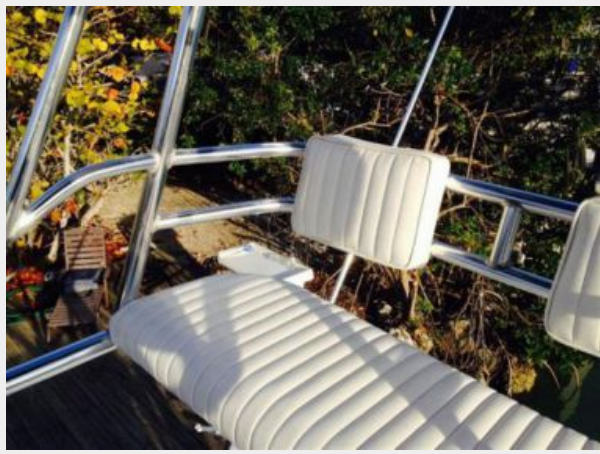












# CONTACTS

---

Andrey Shestakov, leading yacht broker of the sales department of Shestakov Yacht Sales Inc. Shestakov Yacht Sales Inc., the official representative of the Miami/Fort Lauderdale FL headquarters.

## Contact details

---

Email: [andrey@shestakovyachtsales.com](mailto:andrey@shestakovyachtsales.com)

Web: [shestakovyachtsales.com/en/](http://shestakovyachtsales.com/en/)

## Telephones

---

USA: +1(954)274-4435

## Office hours

---

Monday – Saturday: **9:00 - 21:00** EDT

Sunday: **closed**

## Address

---



Harbour Towne Marina, 850 NE 3rd St,  
STE 213, Dania, FL 33004