

KENA MARIE — DE BIRS



Судостроитель: DE BIRS

Год постройки: 2007

Модель: Моторная яхта

Цена: **ЦЕНА ЯХТЫ ПО ЗАПРОСУ**

Местонахождение: United States

Длина общая: 85' 0" (25.91m)

Ширина: 19' 8" (5.99m)

Макс. осадка: 6' 2" (1.88m)

Крейс. скорость: 18 Kts. (21 MPH)

Макс. скорость: 22 Kts. (25 MPH)

Купить **KENA MARIE — DE BIRS** а также выбрать подходящую вам яхту из нашего каталога яхт вам поможет опытный яхтенный брокер Андрей Шестаков. На сегодняшний день компания **Shestakov Yacht Sales Inc.** имеет большое количество яхт в собственном списке продаж, а также тесно сотрудничает со всеми крупными яхтенными производителями по всему миру.

Для того чтобы купить яхту **KENA MARIE — DE BIRS** а также проконсультироваться по любому вопросу связанному с покупкой, продажей, чартером яхт позвоните по телефону **+7(918)465-66-44**.

ОГЛАВЛЕНИЕ

ОГЛАВЛЕНИЕ	2
ХАРАКТЕРИСТИКИ	4
Основная информация	4
Размеры	4
Скорость, вместимость и масса	4
Размещение	4
Корпус и палуба	4
Информация о двигателе	5
ПОДРОБНОЕ ОПИСАНИЕ	6
Updates	6
Upgrades & Options	7
Galley	7
Salon Features	8
VIP Cabin	8
Flybridge Equipment	8
Aft Deck	9
Engine & Mechanical	9
Safety & Security Equipment	9
Navigation Equipment	10
Deck & Hull Equipment	10
Pilothouse	11
Communication System	11
Laundry	11
Starboard Guest Cabin	11
Office Equipment	11
Master Cabin	12
Crew Cabin	12
Auxiliary Machine & Electrical System	12

Audio & Visual Equipment	13
Ancillary Equipment	13
Additional Information	14
Disclaimer	14
Исключения	14
Отказ от ответственности	14
ФОТОГРАФИИ	15
КОНТАКТЫ	27
Контактная информация	27
Телефоны	27
Время работы	27
Адрес	27

ХАРАКТЕРИСТИКИ

Основная информация

Тип судна: Моторная яхта

Модельный год: 2007

Год постройки: 2007

Страна: United States

Размеры

Длина общая: 85' 0" (25.91m)

Ширина: 19' 8" (5.99m)

Макс. осадка: 6' 2" (1.88m)

Скорость, вместимость и масса

Крейс. скорость: 18 Kts. (21 MPH)

Макс. скорость: 22 Kts. (25 MPH)

Водоизмещение: 150000 Pounds

Вместимость воды: 343 Gallons

Вместимость сточного бака: 79 Gallons

Объем топливного бака: 1981 Gallons

Размещение

Всего кают: 5

Всего коек: 4

Всего ком. состава: 4

Корпус и палуба

Материал корпуса: Fiberglass

Информация о двигателе

Двигатели: 2

Производитель: MTU

Модель: 10V2000

Тип двигателя: Inboard

Тип топлива: Diesel

ПОДРОБНОЕ ОПИСАНИЕ

Updates

- The Floors are imported Wenge Wood from Africa. Wenge Wood is now on the IUCN Red List as an endangered Wood type. Therefore, it is extremely difficult to get now and the price has skyrocketed. The original owner specified it because of its durability and unique grain and color. This may be one of the last boats with Wenge Wood Flooring.
- All Stainless Steel is imported German Stainless.
- The Engines are German built MTU engines. The German, common rail MTU's are more robust and in my opinion, more reliable and durable than the Detroit Built Engines. Parts and Service are available from Florida Diesel.
- The companion way overhead lighting is the same lighting as used on the Gulfstream G5 Aircraft. The owner of DeBeers Yachts was one of the funding members of Gulfstream Aircraft and he Incorporated many of the features of the Gulfstream into the yacht.
- The material used to cover the Fly Bridge Fiberglass Deck is a material known as Deckadence. The material is a polypropylene base material that does not stain, water runs through it so it does not get or stay wet, it is soft to walk on, non-slip and does not get hot; like fiberglass or teak does. Also, if you drop a wine glass, in most cases, the material is soft enough to prevent the glass from breaking.
- Kena Marie has classic Italian sleek lines and a distinct European Flavor. The furniture is covered in Italian Silk but, it is surprisingly durable and maintenance free. The walls below deck in the quarters area are also Italian silk. Since we have had the boat, we have not experienced any problems with keeping the furniture or walls clean. There are several spare rolls of fabric for the walls and furniture that are available if they are ever needed.
- The interior is a contemporary style and a classic European Design. The Galley and Crew Quarters are located AFT below deck with a separate entrance and exit way for the crew. This design allows for the entire salon and upper deck areas to be segregated from the crew and allows the owners and guest to maintain privacy in the living and social areas.
- The separate forward TV, lounge and office area allows a separate adult (or children's area) separated from the main salon.
- Kena Marie has zero speed stabilizers.
- Kena Marie also has an Atlas power converter system which allows shore power connections anywhere in the world.
- A Glendenning cable reel system was put in 2013. At that time, the Passarail hydraulics were removed. In most of the Caribbean and Florida docks, you don't need it. The hydraulics are still available if someone wants to reinstall them.
- The boat is equipped with a KVH Satellite TV and phone/ internet system. Therefore, if you need to stay in touch with the world, you have the ability to. We have had the boat as far down in the Caribbean as Granada and spent as much as 3 months at a time on the boat and had TV and internet coverage the entire time. Every TV has its own DTV satellite receiver. The receivers will have to be returned to DTV but the new owner can set up a new account. All wiring is already in place and the main salon TV and the Forward TV area are

on UPS systems.

- The Fly Bridge and AFT tables telescope down and can be used as layout areas or beds. There are custom made cushions for these tables. The front lay-out pads have been modified and elevating backs have been put under the lay-out cushions.
- The ice maker on flybridge makes 120 lbs. of ice per day. Nice when you are anchored out or in areas where ice cost 5.00 per bag. The refrigerator is also a nice thing to have on ling trips and is very convenient for entertaining on the fly bridge. The BBQ is a top of the line Lynx Grill, 316 Stainless Steel.
- The Washer and Dryer were replaced in the spring of 2014. The cook top was also replaced around the same time.
- The A/C Chillers and Cooling Manifold were removed and rebuilt to like new condition by Marine Air in December 2015.
- The Port Generator was replaced with a new Northern Lights Generator in 2013.
- Fresh Water and Raw Water Pumps have been replaced in the last 3 months.
- The Water Maker was serviced 12/14
- All Batteries and Chargers were replaced in 2013

Upgrades & Options

- Water Maker Serviced 12/2014
- New Mako Marine Black Water Pump
- New Baldor Water Maker Pump
- New Scott Raw Water A/C Pump
- New 24 V 100 AMP Battery Charger
- New A/C Accumulation Pump
- New Fuel Transfer Pump
- New \$7k Grill on Flybridge
- New LED lights in Engine Room
- New Cable Master
- 2011 Props are redone by Precision thy area class S upgrade from class 3

Galley

- Whirlpool Convertible Range Hood
- GE Built in Microwave/ Digital
- GE 30 F S/S w LCD TV
- GE built-in Disher Washer
- GE Microwave / Digital
- GE Electric Built-in Oven
- GE Flush Glass Top Stove
- GE Refrigerator
- GE Freezer

- Large Stainless Steel Steel Sink
- Large Pantry and Cupboard
- U-Line Ice Maker
- Port Windows

Salon Features

- 2 x Pioneer Home Theater System w subwoofers and speakers throughout
- Spiral Designer Staircase to Lower Deck Staterooms
- Tinted Sliding Doors to Large AFT Deck
- Antenna System DVB- Compatible
- Designer Ceiling and Lighting System
- Designer Coffee Table
- KVH Tracvision 6 Satellite TV
- Dinning Settee with Three Extra Chairs
- Large Sofa with Lounge Sectional
- Frigonautica Refrigerator
- Two High Top Chairs
- U-Line Ice maker
- DIRECT TV

VIP Cabin

- Cedar Lined Hanging Closet
- Centerline Queen Berth
- Manual Ship Safe
- Located Forward
- Designer Soft Goods
- Flat Screen TV
- Reading Lights
- Overhead Hatch
- Designer Ceiling
- Night Stands
- Drawers

Flybridge Equipment

- Two L-Shaped Facing Sofas w Long Teak Tables Port/ Strbd
- New aft seating area
- Magnetic Compass: Danforth 3 3/4" Compass Series
- Fiberglass w Teak Top Staircase to Lower AFT Deck

- Intercom System: RAY 430 Loudhailer/ Marine Intercom
- Raymarine Multi Color E120 Display
- Raystar 125/ Plus 1 x PC based Yachtica Chart Plotter
- Ray 215e DSC VHF Transceiver
- Flybridge wet Bar with with Icemaker, Refrigerator, sink with 3 stools
- Added new ex large Lynx BBQ pit
- Stainless Steel Safety Rails
- New custom Hardtop with forward enclosure added 2011
- Teak Deck
- Fusion Sound System with IPod Player

Aft Deck

- Large Swim Platform w/ tall Stainless Steel safety rails
- U - Shaped Transom Sofa with Hi - Lo teak table
- Hard Top and Bimini Top Awning
- Stainless Steel safety rail
- Teak Deck
- Zodiac Inflatable with 40 HP outboard

Engine & Mechanical

- Air Conditioning: MARINE AIR - MCW 4 ton, 3 compressors, and 14 fan coils with BTU's that equal 116,000 BTU's
- Sewage Treatment Systems:HeadHunter tank sentry system
- WC's: 5 x TECMA Silence Standard Toilet System - NC24B
- 2 x Separ Dual Fuel Water Separator (1x per engine)
- Stabilizers:Zero Speed Trac System
- ZF- MATHERS ENGINE GEARBOX ZF2050/R.R 2.519
- Twin 1,500hp MTU Diesel Engines Type 10v 2000 M93@2450rpm
- Shafts & Propellers: Tail Shaft:Diminsions-3.9 in. Diameter x 265 in. overall length
Stainless Steel grade Temet 25
- The A/C Chillers and cooling manifold were removed and rebuilt to like new condition by Marine Air in December 2015.
- The Port Generator was replaced with a new Northern Lights Generator in 2013.
- Fuel Polishing and Cleaning System

Safety & Security Equipment

- Audio & Visual Alarms : 2xheat,12xsmoke,4xfire in various areas
- Portable Fire Extinguishers: 12 total

- Firefighting: PYROSHIELD - Arousal Fire Suppression System
- Safety Gear : Fire Ax, Fire Blanket, & Full US Coast Guard Safety Package
- G&R ACM401BT 24V Main Fire Pump
- G&R Engine Driven Pump
- G&R Emergency Bilge Pump 230V, hose with Fire Nozzle
- G&R Maxi Sub Emergency Bilge Pump 24v

Navigation Equipment

- 2x Ray Marine Multi Color E120 Display 1 @ Pilot House , 1 @Fly Bridge
- 2x Ray Marine Wind Display ST-290 Weather Dock
- 2x Raystar 125/1- Pilot House , 1- Fly Bridge / 1x PC based Yachtica Chart
- ST290 Autopilot & Standard VDO Style
- Auto Pilot : ST8002 w/ ST 6002 remote
- McMurdo - ICS NAV6 Navtex
- Weather Fax : Weather Dock
- Ray Marine ST 290- Speed & Depth
- 4 kw/4ft Open Array Scanner
- Intercom System : 3 Ray 430 Loudhailer/Marine intercom in Crew Area , Pilothouse & Fly Bridge
- Telephone Exchange: VTECH Broadband - IP8100-2
- Bow Thruster: ARCTURUSMARINE- TRAC 12" Hydraulic 38 hp
- Stabilizers: ARCTURUSMARINE- TRAC 300 9.0
- Bilge Pump: G & R ACM 401BT 220 Lt/ min
- 2 x Dandorth 3 3/4" Compass Series 1 @ Pilot House, 1 @ Fly Bridge
- Auto Pilot S3G Core Pak
- DSM 300 HDFI Fish Finder Processing Unit
- Navtex: Mcmurdo- ICS NAV6

Deck & Hull Equipment

- MIUR Vertical Windless- 24V- VCR4500
- 2 x MUIR AFT Capstan Drums- 24V - VC4000
- MUIR Claw Anchor 80kg- Galvanized
- 328ft Grade L Galvanized Chain
- Boat Crane & Davits: Steelhead Marine CT900
- Side Ladders:
 - Lazarette Portable S/S Ladder with Teak Steps
 - OPACMARE Telescoping Gangway 24V
 - MARQUIPT Sea Stairs

- Tender: 11.5 Zodiac Jet Boat- 12 hrs, Brand New
- Swimming Platform: Teak Deck with Stainless Steel Tender Base
- Awning: Bimini Top AFT Deck Area and Bridge

Pilothouse

- Intercom System: Ray 430 Loudhailer/ Marine Intercom
- Raystar 125/ Plus 1 x PC based Yachtica Chart Plotter
- Magnetic Compass: Danforth 3 3/4" Compass Series
- Raymarine multi color E 120 Display
- Ray 215e DSC VHF Transceiver
- Large Sky Lounge Pilothouse
- Black Leather Captains Chair
- Fully Furnished

Communication System

- Syrens Onboard WiFi EC- Series Mobile Wi-Fi
- 3 x Ray 215e DSC VHF Transceiver
- VTECH Broadband- IP 8100-2
- 3 x Ray 430 Loudhailer/ Marine Intercom

Laundry

- Haier Dryer w 11lbs. capacity
- Haier Washing Machine w 11lbs capacity

Starboard Guest Cabin

- Designer Soft Goods, Drapery
- Cedar Lined Hanging Closet
- Manual Ship Safe
- Drawers
- Flat Screen TV

Office Equipment

- Yachtica Computer Yacht Management System

Master Cabin

- Flat Screen TV
- Digital Ship Safe
- 2 x Cedar Lined Closets
- Large Vanity Area
- Storage Drawers
- En Suite Head
- Roomy Walkaround Centerline Queen Berth

Crew Cabin

- Intercom System: Ray 430 Loudhailer/ Marine Intercom
- Ray 215 e DSC VHF Transceiver
- Manual Ship Safe
- Convertible Sofa
- Single Berth

Auxiliary Machine & Electrical System

Battery Charges:

- 2 x Master Volt C2 110/60 Hz for Navigation and Gen Set Batteries
- 2 x Master Volt C3 110/60 Hz for Engine & Service Batteries

Generators:

- 1 Northern Lights M944 30kw / 1 Northern Lights M864 25 kw
- Hours: PORT generator replaced 2013 approx. 400 hours/ STBD
- Electricity: AC- 220/110 DC 24V / 50 KHZ (Full Global Conversion by Atlas)
- Converter: Atlas Global Power Converter 220/110 50/60 HZ
- Inverter: MASTER VOLT Inverters 24V/ 110V- 60 HZ
- Batteries:

- 2 x MASTER VOLT Batteries/ Navigation Battery

- 2 x MASTER VOLT House/ Service Batteries

- 8 x MASTER VOLT Batteries/ Engine Control

- 4 x 5 BMASTER VOLT Batteries/ Engine

- 12 x MASTER VOLT House/ Service Batteries

- MVG 12V 200 Ah Gel
- MVG 12V 120 Ah Gel
- All Batteries and charges were replaced in 2013

Audio & Visual Equipment

Satellite TV

- KHV TracVision 6 Satellite TV
- Antenna System DVB- Compatible
- DIRECT TV D12-300

Televisions

- GE 30 F S/S w LCD TV- In Galley
- 1 x Sharp Plasma 52"- LC- 520624
- 2 x Sharp Plasma 37"- LC- 37SH20U
- 1 x Phillips LCD 23"- 23PF530/28
- 2 x Sceptre LCD 20"
- HDTV Converter

Stereo Systems: 2 x Pioneer Home Theater System with Subwoofers and Speakers Throughout

Video Recorders & Players

- 1 x Marine AV Waterproof/ CD Player- AQCD1
- 5 x Pioneer CD/DVD Player DV-600 AV-S
- 2 x Pioneer DVD Home Theater System with Subwoofers and Speakers Throughout

Main Salon and TV room have separate Sound Systems with iPod Player

Ancillary Equipment

- ST290 Autopilot and Standard VDO Style
- ARCTURUSMARINE- TRAC 12" Hydraulic 38hp
- 2 x Separ Dual Fuel Water Separator (1 x per engine)
- G & R ACM 401BT 220 Lt/min.
- HEADHUNTER Tank Sentry System
- 5 x TECMA silence standard toilet system
- MARINE AIR- MCW 4 Ton, 3 Compressors, and 14 Fan Coils with different BTU's that equal 116,000 BTU's
- Stabilizers and the Water Maker was Serviced 12/14

Additional Information

The De Bris 85 RPH Interior comes in a dark wood known as the "Elegance Interior" or in a light wood known as the "Modern Interior". This product has proven to be a worldwide success and was recognized as one of the top five best designed Super Yachts in the World. The main Salon's open plan and spacious layout offers a full bar/ owner's galley, a dining table, that also converts into a coffee and game table arrangement plus a spacious sitting area that allows the owner to entertain a large number of guests. Moreover, there is the popular Forward Salon that offers several functional areas which include a private sitting area/ family room, a home theater and the owner's office all in one.

Disclaimer

The Company offers the details of this vessel in good faith but cannot guarantee or warrant the accuracy of this information nor warrant the condition of the vessel. A buyer should instruct his agents, or his surveyors, to investigate such details as the buyer desires validated. This vessel is offered subject to prior sale, price change, or withdrawal without notice.

Исключения

При продаже яхты исключаются личные вещи владельца.

Отказ от ответственности

Компания предоставляет описание судна или яхты добросовестно, но не может гарантировать точность этой информации, а также не ручается за техническое состояние. Покупатель должен проинструктировать своих агентов или оценщиков исследовать представленную информацию более подробно, по собственному желанию. Продажа судна или яхты, изменение цены или снятие с продажи будет происходить без предварительного уведомления.

ФОТОГРАФИИ





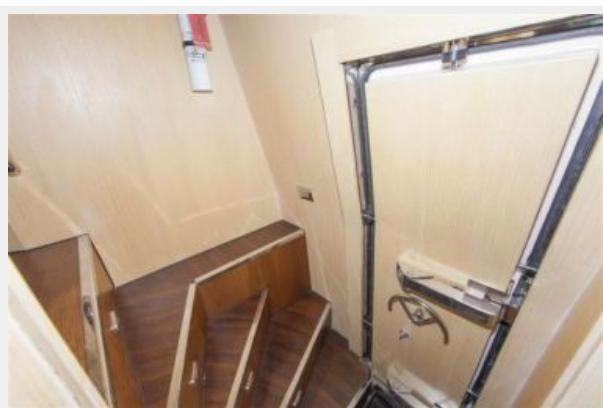


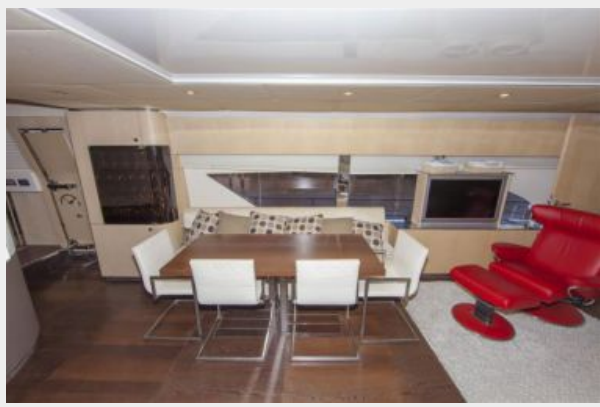


















КОНТАКТЫ

Андрей Шестаков (Andrey Shestakov) – ведущий яхтенный брокер отдела продаж яхт и судов компании Shestakov Yacht Sales Inc. Официальный представитель Shestakov Yacht Sales Inc. для русскоговорящих клиентов в центральном офисе компании в Майами/Форт Лодердейл/Флорида/США.

Контактная информация

Email: andrey@shestakovyachtsales.com

Web: shestakovyachtsales.com

Телефоны

Краснодарский край: **+7(918)465-66-44**

США, Майами, Флорида: **+1(954)274-4435**

Время работы

Понедельник – Суббота: **9:00 - 21:00**
EDT

Воскресенье: **Закрето**

Адрес



Harbour Towne Marina, 850 NE 3rd St,
STE 213, Dania, FL 33004