

SL106 AMERICAS EDITION — SANLORENZO



Builder: SANLORENZO

Year Built: 2017

Model: Motor Yacht

Price: PRICE ON APPLICATION

Location: Italy

LOA: 106' 0" (32.31m)

Beam: 23' 1" (7.04m)

Max Draft: 6' 4" (1.93m)

Our experienced yacht broker, Andrey Shestakov, will help you choose and buy a yacht that best suits your needs **SL106 Americas Edition — SANLORENZO** from our catalogue. Presently, at **Shestakov Yacht Sales Inc.**, we have a wide variety of yachts available on our sale's list. We also work in close contact with all the big yacht manufacturers from all over the world.

If you would like to buy a yacht **SL106 Americas Edition — SANLORENZO** or would like help answering any questions concerning purchasing, selling or chartering a yacht, please call **+1(954)274-4435**

TABLE OF CONTENTS

TABLE OF CONTENTS	2
SPECIFICATIONS	4
Overview	4
Basic Information	4
Dimensions	4
Accommodations	5
Hull and Deck Information	5
Engine Information	5
DETAILED INFORMATION	6
AMERICAS EDITION PACKAGE	6
OPTIONS & UPGRADES	6
Exclusions	7
Disclaimer	7
PHOTOS	8
PROFILE	8
PROFILE	8
TERRACE	8
BOW	8
SALON	8
DINING	8
SALON	9
MASTER STATEROOM	9
MASTER STATEROOM	9
MASTER STATEROOM	9
MASTER STATEROOM	9
MASTER HEAD	9
VIP STATEROOM	9
VIP STATEROOM	9

VIP HEAD	10
FLYBRIDGE	10
FLYBRIDGE	10
FLYBRIDGE	10
FLYBRIDGE	10
FLYBRIDGE BOFFI BAR	10
FLYBRIDGE	10
CONTACTS	11
Contact details	11
Telephones	11
Office hours	11
Address	11

SPECIFICATIONS

Overview

The SL106 is a beautiful planning yacht. Her familiar, yet updated lines reflect over 50 years of nautical expertise and handcrafted quality. Designed to specifically suit the Americas market, she has full "Americas Edition Standard" specifications, plus innovative interior and exterior features. The focal point of the main salon is a stunning hydraulic drop-down terrace. A substantial garage stores a tender and water toys, leaving the decks and flybridge uncluttered for entertaining. At the bow is a seating and sunbathing area shaded by a removable sail-cover style awning. Accommodations include an on-deck Master stateroom, two spacious VIP staterooms and two guest staterooms. For ultimate privacy, all staterooms have ensuite heads. Crew accommodations for 5. Currently under construction for delivery to Ft. Lauderdale in the Fall of 2016. Please call for more details.

Sanlorenzo of the Americas provides direct access to the shipyard for customers in North America, Central America, and South America. Headquarters in Fort Lauderdale, Florida.

Basic Information

Category: Motor Yacht

Sub Category: Flybridge

Model Year: 2016

Year Built: 2017

Country: Italy

Vessel Top: Hardtop

Fly Bridge: Yes

Cockpit: Yes

Dimensions

LOA: 106' 0" (32.31m)

Beam: 23' 1" (7.04m)

Max Draft: 6' 4" (1.93m)

Accommodations

Total Cabins: 5

Sleeps: 10

Total Heads: 6

Crew Cabin: 3

Crew Berths: 5

Crew Sleeps: 5

Crew Heads: 3

Hull and Deck Information

Hull Material: GRP

Deck Material: Teak

Hull Configuration: Planing

Hull Color: White

Hull Designer: Sanlorenzo

Exterior Designer: Francesco Paszkowski

Interior Designer: Marty Lowe

Engine Information

Engines: 2

Manufacturer: MTU

Model: 16V2000 M96

Engine Type: Inboard

Fuel Type: Diesel

DETAILED INFORMATION

AMERICAS EDITION PACKAGE

ELECTRICAL SYSTEM Electrical system: 127/220V Shore power connections: Two (2) 220V AC 100A Three-phase 60Hz Generators: Two (2) 55kW Fail-safe galvanic isolator for dry dock Battery charger: 12V/25A for generator batteries Aft Glendenning Cablemasters with 30m (98') cable: Two (2) CM8 GFCI distributed in technical room, bathroom, galley and exterior utilizing waterproof boxes in engine room and lazarette Isolation transformers (upgraded below) Double gang 110V 60Hz USA/EU sockets One (1) 24V master switch dedicated to navigation electronics at pilothouse **ENGINE ROOM EQUIPMENT** Double Racor filters for generators Ball valve thru-hull fittings (engine cooling exhausts remain as gate valves) Engine oil change system with manual pump (upgraded below) Overboard venting for dryer, in lieu of self-contained ventilation Watermaker: Sea Recovery 1800 gallons/day (includes predisposition) Additional fresh water purification system with active carbons Additional grey water pump installed in by-pass Additional black water pump installed in by-pass Installation of FM200 fire system equipment (USCG approved) **AIR CONDITIONING SYSTEM** Tropicalized air conditioning system (twin chillers) with chilled water piping insulation upgrade: 240,000 BTU Air conditioning condensation draining overboard **MANEUVERING CONTROLS** MTU Blue Line controls **NAVIGATION ELECTRONICS** VHF with US channels Additional electrical conduits between the engine room, pilothouse, flybridge helm station and hard top **AUDIO VISUAL EQUIPMENT** US Audio/Video equipment (upgraded below) **COMPLEMENTS FOR THE EXTERIOR** Three (3) freshwater outlets: Flybridge, aft and bow Spotlight Lateral gangway: Marquipt Sea Stair in stainless steel with teak steps Stainless steel protection around exhaust plenums and forward bow cap rail area Prop speed antifouling system on shafts, propellers, intruder, bow and stern thruster propellers, swim platform lift brackets, rudders and supports, trim tabs **COMPLEMENTS FOR THE INTERIOR** Hard latch system: Slides or positive catches on all galley/bar appliances and other drawer units Master and VIP berths hinging up for additional under bed storage **APPLIANCES** Washing machine: Asko Dryer: Asko Cooktop (30"): Miele Microwave: Sharp Oven (30"): Miele Ventilation fan (35"): Miele Sink/food waste disposal: Insinkerator Compact 3/4 HP Dishwasher (24"): Miele Galley upright refrigerator/freezer: Sub-Zero 700TCI with drawer units (or comparable) Wine cooler (24"): Sub-Zero Salon bar refrigerator: Frigonautica Salon bar ice maker: Scotsman Flybridge bar refrigerator: Frigonautica Flybridge bar ice maker: Indel Webasto, clear-cube **CERTIFICATES & DOCUMENTATION** HIN plate Hauling diagrams

OPTIONS & UPGRADES

ELECTRICAL SYSTEM Frequency convertor: ASEA (220V/110V - 50Hz/60Hz) with seamless transfer, including deletion of isolation transformers **ENGINE ROOM EQUIPMENT** Electric pump in lieu of manual pump for engine oil change system (not including dirty oil storage tank) **AIR CONDITIONING SYSTEM** Ozone treatment for air conditioning system **THRUSTERS & STABILIZERS** ABT Hydraulic stern thruster **ALARMS & SECURITY** Five (5) Camera CCTV IP system: Two (2) fixed cameras in the cockpit and three (3) fixed cameras in the engine room.

Includes DVR, one (1) monitor and monitoring on the crew mess TV. Additional full-function touch screen systems monitor located in crew mess Remote cellular warning SATELLITE & COMMUNICATION SYSTEMS KVH antenna SAT TV and HD TV predisposition Predisposition for KVH SAT Phone, V7 or V3 Two (2) empty radomes for KVH SAT TV and Phone NAVIGATION ELECTRONICS Raymarine DIAMOND package, in lieu of standard SILVER FLIR thermal camera for night vision/low light AUDIO VISUAL EQUIPMENT Upgraded Audio/Visual package iPad remote control lighting for the exterior, main deck and pilothouse (actual buttons remain as switches) COMPLEMENTS FOR THE EXTERIOR Disappearing stern shower Stainless steel column shower on flybridge Teak flybridge deck Aft flybridge awning: Sail-cover sun shade system with SeaSmart removable carbon fiber stanchions Bow seating area awning: Sail-cover sun shade system with SeaSmart removable carbon fiber stanchions Manual hi-low table for bow seating area; convertible to a sunbed with included cushion filler panel Two (2) electric hi-low tables for the aft deck; convertible to make one large table Custom teak cabinet on the flybridge to house the Kenyon Texan BBQ (see Appliance Options) Paola Lenti furnishings and upgraded exterior décor Six (6) Underwater lights: OceanLED 7000 lumen COMPLEMENTS FOR THE INTERIOR Salon terrace with electro-hydraulic opening system Additional set of enlarged hull side windows: Two (2) port and two (2) starboard; total of eight including standard windows Lower deck floating staircase in stainless steel Indirect LED lighting behind drapery curtains in master, VIP and guest staterooms Master, VIP and guest bedframes and desk tops covered in leather Convertible sliding berth system in guest stateroom; allows for twin or double berth arrangement VIP and guest stateroom TVs mounted behind a mirror panel; chrome frame around the TVs and vanity niches Five (5) Overhead rain showers: One for master shower and for each VIP/guest shower Six (6) Teak marble walls in lieu of standard lacquer: Master water closet/shower, VIP and guest showers Upgraded interior décor, furnishings, fixtures, lighting and artwork One (1) Additional safe in captain's cabin APPLIANCES Professional Miele washing machine PW6065 Professional Miele dryer PT7136 Sub-Zero wine cooler (24") ICB 424G/O Kenyon electric BBQ on flybridge Two (2) Frigonautica C160C stainless steel freezers in crew dinette

Exclusions

Owner's personal belongings.

Disclaimer

The Company offers the details of this vessel or yacht in good faith but cannot guarantee or warrant the accuracy of this information nor warrant the condition of the vessel. A buyer should instruct his representatives, agents, or his surveyors, to investigate such details as the buyer desires validated. This vessel or yacht is offered subject to prior sale, price change, or withdrawal without notice.

PHOTOS

PROFILE



PROFILE



TERRACE



BOW

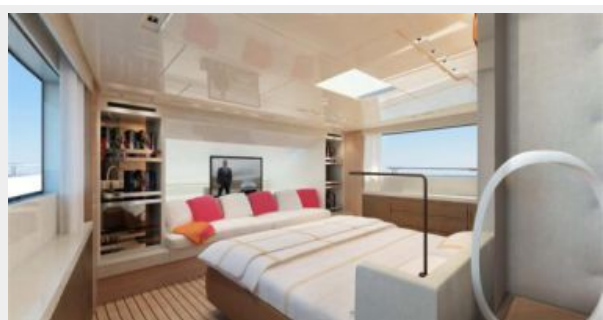
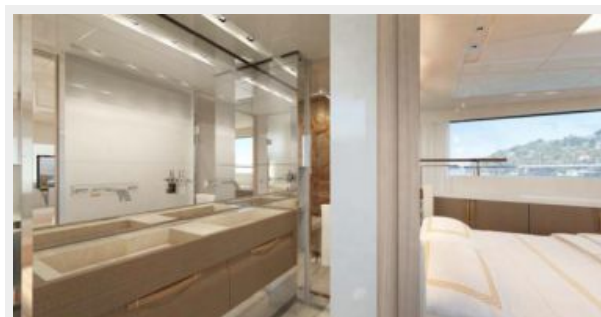


SALON



DINING



SALON**MASTER STATEROOM****MASTER STATEROOM****MASTER STATEROOM****MASTER STATEROOM****MASTER HEAD****VIP STATEROOM****VIP STATEROOM**

VIP HEAD



FLYBRIDGE



FLYBRIDGE



FLYBRIDGE



FLYBRIDGE



FLYBRIDGE BOFFI BAR



FLYBRIDGE



CONTACTS

Andrey Shestakov, leading yacht broker of the sales department of Shestakov Yacht Sales Inc. Shestakov Yacht Sales Inc., the official representative of the Miami/Fort Lauderdale FL headquarters.

Contact details

Email: **andrey@shestakovyachtsales.com**

Web: shestakovyachtsales.com/en/

Telephones

USA: **+1(954)274-4435**

Office hours

Monday – Saturday: **9:00 - 21:00 EDT**

Sunday: **closed**

Address



Harbour Towne Marina, 850 NE 3rd St,
STE 213, Dania, FL 33004