

47FT 2014 FOUNTAINE PAJOT CUMBERLAND — FOUNTAINE PAJOT



Builder: FOUNTAINE PAJOT

Year Built: 2014

Model: Catamaran

Price: PRICE ON APPLICATION

Location: United States

LOA: 47' 0" (14.33m)

Beam: 21' 7" (6.58m)

Min Draft: 3' 6" (1.07m)

Cruise Speed: 19 Kts. (22 MPH)

Max Speed: 24 Kts. (28 MPH)

Our experienced yacht broker, Andrey Shestakov, will help you choose and buy a yacht that best suits your needs. We have a wide variety of yachts available on our sale's list. We also work in close contact with all the big yacht manufacturers from all over the world.

If you would like to buy a yacht 47ft 2014 Fountaine Pajot CUMBERLAND 47LC — FOUNTAINE PAJOT or would like help answering any questions concerning purchasing, selling or chartering a yacht, please call **+1(954)274-4435**

TABLE OF CONTENTS

TABLE OF CONTENTS	2
SPECIFICATIONS	3
Basic Information	3
Dimensions	3
Speed, Capacities and Weight	3
Accommodations	3
Hull and Deck Information	3
Engine Information	4
DETAILED INFORMATION	5
General Info	5
Maestro Layout (Three Cabin Layout)	5
Salon Layout	7
Tankage	8
Propulsion	8
Deck Layout	9
Propulsion	10
Plumbing	11
Electrical System	12
Fittings	12
Exclusions	13
Disclaimer	13
PHOTOS	14
CONTACTS	24
Contact details	24
Telephones	24
Office hours	24
Address	24

SPECIFICATIONS

Basic Information

Category: Catamaran

Model Year: 2014

Year Built: 2014

Country: United States

Dimensions

LOA: 47' 0" (14.33m)

LWL: 43' 10" (13.36m)

Beam: 21' 7" (6.58m)

Min Draft: 3' 6" (1.07m)

Clearance: 19' 11" (6.07m)

Speed, Capacities and Weight

Cruise Speed: 19 Kts. (22 MPH)

Cruise Speed RPM: 3000 Kts.

Max Speed: 24 Kts. (28 MPH)

Max Speed RPM: 3630 Kts.

Displacement: 40500 Pounds

Water Capacity: 194 Gallons

Fuel Capacity: 634 Gallons

Accommodations

Total Heads: 3

Hull and Deck Information

Hull Material: Fiberglass

Engine Information

Engines: 2

Manufacturer: Volvo

Model: D4

Engine Type: Inboard

Fuel Type: Diesel

DETAILED INFORMATION

General Info

LOA: 13,95 m / 45.77 ft

LWL : 13.40 m / 43.96 ft

Beam : 6.55 m / 21.49 ft

Draft: 1.10 m / 3.61 ft

Air draft including the mast : 6.06 m / 19.88 ft

Air clearance flying bridge fittings removed: 3.60 m / 11.81 ft

Lightship displacement : approx. 14 200 kg

Displacement maximum load : approx. 18 400 kg

Architects : Joubert / Nivelte

Shipyard: Fountaine-Pajot

Maestro Layout (Three Cabin Layout)

1 owner's suite to port + 2 double cabins to starboard

Owner's suite (Port Hull):

Sleeping accommodation :

- Large walkaround island berth (5'4x 6'7"approx.)
- Two storage drawers underneath the bed
- Large mirror on side of the bed
- Coat hangers
- Large picture window including porthole
- Ventilation via a deck hatch and a porthole
- Large porthole with blind
- Curtain on deck hatch
- Curtains on picture window and porthole
- 2 bedside reading lights

Owner's Salon Area :

- Sofa

- Hanging wardrobe
- Storage furniture

Owners En-Suite Head:

- Accessed through wooden door in owner's salon area
- Synthetic resin counter top with built-in wash basin
- Hot and cold water, mixer tap
- Bathroom cabinet with central mirror
- Electric fresh or salt water marine toilet
- Shower space separate by PMMA façade with teak seat
- Independant plumbing and electrical drainage pump
- Ventilation via a deck hatch & chilled water air conditioning

Forepeak :

- Access from bathroom area
- Storage shelf
- Fully painted with gel-coat finish
- Ventilation via porthole
- LED rail lighting

Guest Accommodations (Starboard Hull)

Aft cabin :

- Accessed through wooden door at bottom of companionway
- Double bed (5'4 x 6'7"m approx.) with slatted base
- Shelf near the bed
- Two storage drawers underneath the bed
- Hanging wardrobe & storage furniture
- Coat pegs
- Ventilation via a deck hatch and a porthole
- Large picture window including porthole
- Curtain on deck hatch
- Curtains on picture window and porthole
- Lighting by spotlights & bedside reading lights

Private en-suite heads for each guest cabin:

- Private-access through wooden door from each cabin
- Counter top with built-in wash basin and mirror
- Hot and cold water, mixer tap
- Separated shower
- Shower with electrical drainage pump

- Hand-operated marine toilet
- Bathroom accessories (toilet paper holder + towel rail)
- Storage cabinet
- Controlled mechanical Ventilation

Forward guest cabin :

- Access through wooden door at bottom of companionway
- Double bed (4.7ft/ x 6'7"ft approx.) with slatted base
- Front-accessed storage space under bed
- Hanging wardrobe & storage furniture
- Coat hangers
- Ventilation via a deck hatch and a porthole
- Curtain on deck hatch
- Curtains on picture window and porthole

Salon Layout

Salon

- Salon accessible via a PMMA sliding door
- Panoramic view through peripheral picture windows + 2 side picture windows
- Blinds on side picture windows and curtain on cockpit entrance door
- Wooden coffee table included bar & storage space
- Bench seat for 6
- Ventilation via 2 opening hatches integrated in side picture windows
- LED Lighting – ceiling lights and spots
- Permanent natural ventilation of whole boat via air duct at anchor well + forced ventilation at the helm station

Galley

- Large worktop made of synthetic resin
- Double stainless steel sinks
- Garbage can
- Hot and cold pressurized water through mixer tap
- Cooking hob with 4 large gas plates with saucepan holders
- Double drawer refrigerators 190l 24V
- Many storage spaces and drawers
- Ventilation via hood above cooking hob
- 110V socket
- LED spotlighting

Lower Helm Station

- Pilot bench seat for 3
- Large navigation instrument panel
- Comfortable armchair close to pilot bench seat
- Windscreen wipers & washers
- LED spotlighting
- 110V socket
- 12 V socket
- Hi fi radio / CD / MP3

Tankage

Tanks Fresh Water Tanks: 2 Stainless steel (100 Gallons X 2)

Fuel Tanks: 2 Stainless steel (317 Gallons X 2)

Propulsion

Engine 1:

Engine Brand: VOLVO PENTA

Year Built: 2014

Engine Model: D4

Engine Type: Inboard

Engine/Fuel Type: Diesel

Location: Starboard

Propeller: 3 blade propeller

Drive Type: Direct Drive

Engine Total Power: 300 HP

Engine 2:

Engine Brand: VOLVO PENTA

Year Built: 2014

Engine Model: D4

Engine Type: Inboard

Engine/Fuel Type: Diesel

Location: Port

Propeller: 3 blade propeller

Drive Type: Direct Drive

Engine Total Power: 300 HP

Deck Layout

Cockpit:

- Bench seat for 4
- Teak table for 8
- Sink on portside with hot and cold water tap
- Ice-box
- Big locker under the stairs with space for gas bottle
- Storage locker under bench seat
- Lighting by watertight spotlights
- Large teak decks on transoms with an integrated swim ladder on port side

Foredeck :

- Teak gunwale
- Large forward locker separated into 3 compartments (2 for mooring & 1 for storage)
- Polyester locker hood on jack
- Lounge deck area
- Side navigation LED lights

Flying bridge :

- Accessed by outside stairs
- Swiveling PMMA hatch – watertight closure of stairwell
- Helm station with leather covered stainless steel wheel
- Large instrument panel
- Dralon protective cover for instrument panel
- 2 pilot seats
- Bench seat for 4 with backrest next to helm station
- Bench seat for 6 with backrest behind helm station
- Seat and backrest cushions for the 2 bench seat

- Teak table for 8
- Large aft sundeck
- Flying bridge protected by PPMA windshield
- Navigation & anchor lights, radar & antennas support
- Courtesy lighting

Engine rooms :

- Accessed from the cockpit via deck hatch on hydraulic strut
- Aluminum ladders
- High performance sound-proofing
- LED rail lighting
- Steering gear
- Hot water heater
- A/C chiller
- House batteries
- Inverter/Battery Charger
- Genset
- Watermaker

Propulsion

Engines and equipment

- VOLVO D4-225 diesel engines, with the option to upgrade to Volvo D4-300 diesel engines, or Volvo IPS400
- Heavy duty stainless steel Ø 45 mm direct transmission shaft with V-shaped bracket
- Sea water cooled stainless steel / Carbon shaft seal
- Fixed four-blade propellers
- Engine cooled by fresh water / sea water exchanger
- Engine compartment ventilation by natural intake & mechanical extraction
- 7" color multifunction engine display at inside helm station
- 4" color multifunction engine display on fly bridge
- 2 twin electrical engine controls

Fuel system :

- One KEVLAR composite fuel tank per hull (separate port/starboard circuits), capacity 2 x 317G
- Electrical gauge for each tank (indicator at the inside helm station)
- Primary diesel/water separators & anti-bacteria filters
- Shut-off valves with remote control

Engines and equipment

- VOLVO D4-225 diesel engines, with the option to upgrade to Volvo D4-300 diesel engines, or Volvo IPS400
- Heavy duty stainless steel Ø 45 mm direct transmission shaft with V-shaped bracket
- Sea water cooled stainless steel / Carbon shaft seal
- Fixed four-blade propellers
- Engine cooled by fresh water / sea water exchanger
- Engine compartment ventilation by natural intake & mechanical extraction
- 7" color multifunction engine display at inside helm station
- 4" color multifunction engine display on fly bridge
- 2 twin electrical engine controls

Fuel system :

- One KEVLAR composite fuel tank per hull (separate port/starboard circuits), capacity 2 x 317G
- Electrical gauge for each tank (indicator at the inside helm station)
- Primary diesel/water separators & anti-bacteria filters
- Shut-off valves with remote control

Engines and equipment

- VOLVO D4-225 diesel engines, with the option to upgrade to Volvo D4-300 diesel engines, or Volvo IPS400
- Heavy duty stainless steel Ø 45 mm direct transmission shaft with V-shaped bracket
- Sea water cooled stainless steel / Carbon shaft seal
- Fixed four-blade propellers
- Engine cooled by fresh water / sea water exchanger
- Engine compartment ventilation by natural intake & mechanical extraction
- 7" color multifunction engine display at inside helm station
- 4" color multifunction engine display on fly bridge
- 2 twin electrical engine controls

Fuel system :

- One KEVLAR composite fuel tank per hull (separate port/starboard circuits), capacity 2 x 317G
- Electrical gauge for each tank (indicator at the inside helm station)
- Primary diesel/water separators & anti-bacteria filters
- Shut-off valves with remote control

Plumbing

- Fresh water tanks with electrical gauge & indicator at the inside helm station
- Capacity 2 X 93
- Electrical pump and pressurized water tank

- 20G water heater
- One electric bilge pump in each engine room
- One electric bilge pump in each hull in accommodation area
- Automatic running & audible/visual alarms at the inside helm station & buzzer on fly
- 3 hand-operated bilge pumps
- Fresh water outlet in anchor locker

Electrical System

Power circuit :

- Set of batteries for onboard energy supply 300 A/h 24 V
- 2 extra alternators 80 A / 24 V
- 1 battery 110 A/h 12V per engine
- 2 engine alternators 115A / 12V
- Manual emergency connection between port & starboard engine batteries

24 Volt System:

- Multiplexing distribution of 24 V functions
- Color touch screen for monitoring & control of 24 V functions at inside helm station
- Available output for adding additional equipment

110 Volt- Circuit supplied by inverter, generator, or shore-power :

- 24/110V 1200W inverter from house batteries
- Energy supply for 3 sockets (galley / chart table / aft port cabin)
- Energy supply for 110 V cooker hood & Piezo hob

Fittings

- Hydraulic steering system
- One steering compass
- Full peripheral stainless steel handrail on main deck and flying bridge
- Dralon dodger on flying bridge rail
- 2 stainless steel handrails along catwalk
- Stainless steel transom gates
- Swim ladder with cold and hot water hand-held shower on port transom
- 8 stainless steel mooring cleats (2 forward + 2 midships + 2 aft + 2 on transoms)
- Protection on transom corners
- 6 fenders with covers
- 3 x 12 m long mooring lines, diameter 20mm
- Flagpole

- Electrical windlass with chain counter protected by circuit breaker
- Local windlass control or monitored from flying bridge
- Anchor exit under pod with built-in two-part bridle system
- Stainless anchor roller
- Mooring fairlead on fore bulwark
- 1 aluminum mooring cleat (anchor well)
- Dual control horn

Exclusions

Owner's personal belongings.

Disclaimer

The Company offers the details of this vessel or yacht in good faith but cannot guarantee or warrant the accuracy of this information nor warrant the condition of the vessel. A buyer should instruct his representatives, agents, or his surveyors, to investigate such details as the buyer desires validated. This vessel or yacht is offered subject to prior sale, price change, or withdrawal without notice.

PHOTOS





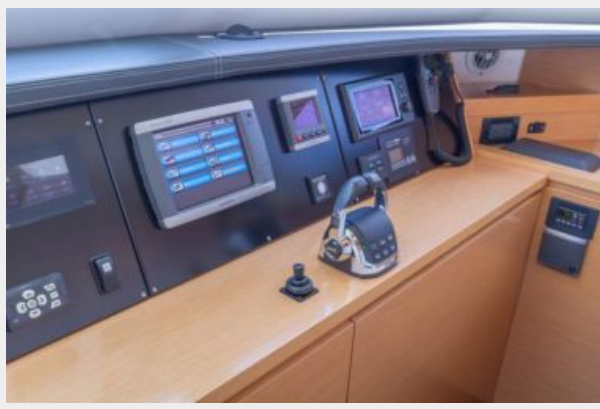


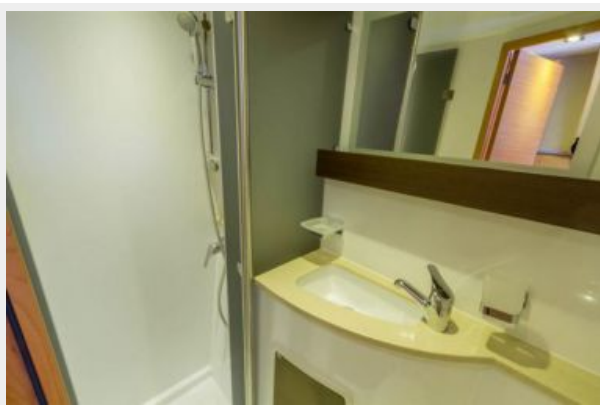
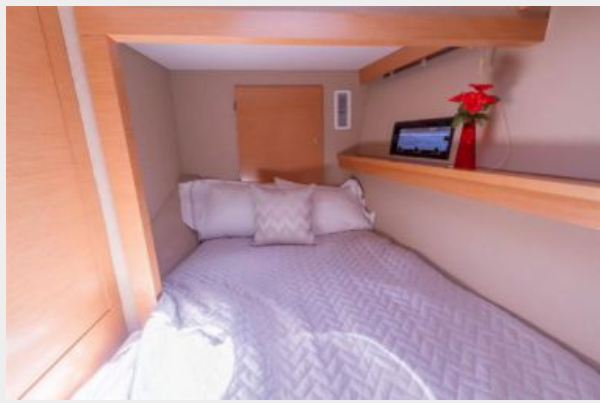


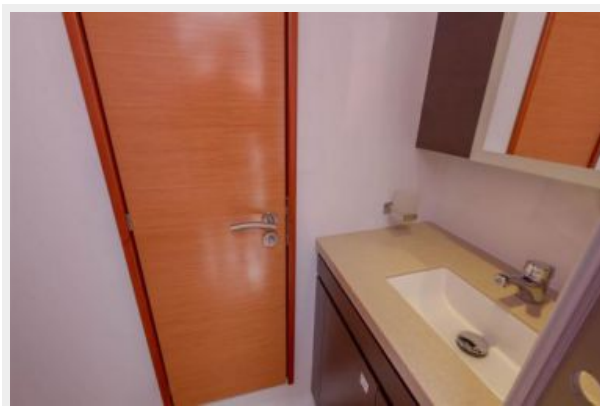












CONTACTS

Andrey Shestakov, leading yacht broker of the sales department of Shestakov Yacht Sales Inc. Shestakov Yacht Sales Inc., the official representative of the Miami/Fort Lauderdale FL headquarters.

Contact details

Email: andrey@shestakovyachtsales.com

Web: shestakovyachtsales.com/en/

Telephones

USA: +1(954)274-4435

Office hours

Monday – Saturday: **9:00 - 21:00** EDT

Sunday: **closed**

Address



Harbour Towne Marina, 850 NE 3rd St,
STE 213, Dania, FL 33004