

47FT 2014 FOUNTAINE PAJOT CUMBERLAND — FOUNTAINE PAJOT



Судостроитель: FOUNTAINE PAJOT

Год постройки: 2014

Модель: Катамаран

Цена: ЦЕНА ЯХТЫ ПО ЗАПРОСУ

Местонахождение: United States

Длина общая: 47' 0" (14.33m)

Ширина: 21' 7" (6.58m)

Мин. осадка: 3' 6" (1.07m)

Крейс. скорость: 19 Kts. (22 MPH)

Макс. скорость: 24 Kts. (28 MPH)

Купить 47ft 2014 Fountaine Pajot CUMBERLAND 47LC — FOUNTAINE PAJOT а также выбрать подходящую вам яхту из нашего каталога яхт вам поможет опытный яхтенный брокер Андрей Шестаков. На сегодняшний день компания Shestakov Yacht Sales Inc. имеет большое количество яхт в собственном списке продаж, а также тесно сотрудничает со всеми крупными яхтенными производителями по всему миру.

Для того чтобы купить яхту 47ft 2014 Fountaine Pajot CUMBERLAND 47LC — FOUNTAINE PAJOT а также проконсультироваться по любому вопросу связанному с покупкой, продажей, чартером яхт позвоните по телефону **+7(918)465-66-44**.

ОГЛАВЛЕНИЕ

ОГЛАВЛЕНИЕ	2
ХАРАКТЕРИСТИКИ	3
Основная информация	3
Размеры	3
Скорость, вместимость и масса	3
Размещение	3
Корпус и палуба	3
Информация о двигателе	4
ПОДРОБНОЕ ОПИСАНИЕ	5
General Info	5
Maestro Layout (Three Cabin Layout)	5
Salon Layout	7
Tankage	8
Propulsion	8
Deck Layout	9
Propulsion	10
Plumbing	11
Electrical System	12
Fittings	12
Исключения	13
Отказ от ответственности	13
ФОТОГРАФИИ	14
КОНТАКТЫ	24
Контактная информация	24
Телефоны	24
Время работы	24
Адрес	24

ХАРАКТЕРИСТИКИ

Основная информация

Тип судна: Катамаран

Модельный год: 2014

Год постройки: 2014

Страна: United States

Размеры

Длина общая: 47' 0" (14.33m)

Длина по ватерлинии: 43' 10" (13.36m)

Ширина: 21' 7" (6.58m)

Мин. осадка: 3' 6" (1.07m)

Трапы: 19' 11" (6.07m)

Скорость, вместимость и масса

Крейс. скорость: 19 Kts. (22 MPH)

Крейсерская скорость поворота: 3000 Kts.

Макс. скорость: 24 Kts. (28 MPH)

Макс. скорость поворота: 3630 Kts.

Водоизмещение: 40500 Pounds

Вместимость воды: 194 Gallons

Объем топливного бака: 634 Gallons

Размещение

Всего ком. состава: 3

Корпус и палуба

Материал корпуса: Fiberglass

Информация о двигателе

Двигатели: 2

Производитель: Volvo

Модель: D4

Тип двигателя: Inboard

Тип топлива: Diesel

ПОДРОБНОЕ ОПИСАНИЕ

General Info

LOA: 13,95 m / 45.77 ft

LWL : 13.40 m / 43.96 ft

Beam : 6.55 m / 21.49 ft

Draft: 1.10 m / 3.61 ft

Air draft including the mast : 6.06 m / 19.88 ft

Air clearance flying bridge fittings removed: 3.60 m / 11.81 ft

Lightship displacement : approx. 14 200 kg

Displacement maximum load : approx. 18 400 kg

Architects : Joubert / Nivelte

Shipyard: Fountaine-Pajot

Maestro Layout (Three Cabin Layout)

1 owner's suite to port + 2 double cabins to starboard

Owner's suite (Port Hull):

Sleeping accommodation :

- Large walkaround island berth (5'4x 6'7"approx.)
- Two storage drawers underneath the bed
- Large mirror on side of the bed
- Coat hangers
- Large picture window including porthole
- Ventilation via a deck hatch and a porthole
- Large porthole with blind
- Curtain on deck hatch
- Curtains on picture window and porthole
- 2 bedside reading lights

Owner's Salon Area :

- Sofa

- Hanging wardrobe
- Storage furniture

Owners En-Suite Head:

- Accessed through wooden door in owner's salon area
- Synthetic resin counter top with built-in wash basin
- Hot and cold water, mixer tap
- Bathroom cabinet with central mirror
- Electric fresh or salt water marine toilet
- Shower space separate by PMMA façade with teak seat
- Independant plumbing and electrical drainage pump
- Ventilation via a deck hatch & chilled water air conditioning

Forepeak :

- Access from bathroom area
- Storage shelf
- Fully painted with gel-coat finish
- Ventilation via porthole
- LED rail lighting

Guest Accommodations (Starboard Hull)

Aft cabin :

- Accessed through wooden door at bottom of companionway
- Double bed (5'4 x 6'7"m approx.) with slatted base
- Shelf near the bed
- Two storage drawers underneath the bed
- Hanging wardrobe & storage furniture
- Coat pegs
- Ventilation via a deck hatch and a porthole
- Large picture window including porthole
- Curtain on deck hatch
- Curtains on picture window and porthole
- Lighting by spotlights & bedside reading lights

Private en-suite heads for each guest cabin:

- Private-access through wooden door from each cabin
- Counter top with built-in wash basin and mirror
- Hot and cold water, mixer tap
- Separated shower
- Shower with electrical drainage pump

- Hand-operated marine toilet
- Bathroom accessories (toilet paper holder + towel rail)
- Storage cabinet
- Controlled mechanical Ventilation

Forward guest cabin :

- Access through wooden door at bottom of companionway
- Double bed (4.7ft/ x 6'7"ft approx.) with slatted base
- Front-accessed storage space under bed
- Hanging wardrobe & storage furniture
- Coat hangers
- Ventilation via a deck hatch and a porthole
- Curtain on deck hatch
- Curtains on picture window and porthole

Salon Layout

Salon

- Salon accessible via a PMMA sliding door
- Panoramic view through peripheral picture windows + 2 side picture windows
- Blinds on side picture windows and curtain on cockpit entrance door
- Wooden coffee table included bar & storage space
- Bench seat for 6
- Ventilation via 2 opening hatches integrated in side picture windows
- LED Lighting – ceiling lights and spots
- Permanent natural ventilation of whole boat via air duct at anchor well + forced ventilation at the helm station

Galley

- Large worktop made of synthetic resin
- Double stainless steel sinks
- Garbage can
- Hot and cold pressurized water through mixer tap
- Cooking hob with 4 large gas plates with saucepan holders
- Double drawer refrigerators 190l 24V
- Many storage spaces and drawers
- Ventilation via hood above cooking hob
- 110V socket
- LED spotlighting

Lower Helm Station

- Pilot bench seat for 3
- Large navigation instrument panel
- Comfortable armchair close to pilot bench seat
- Windscreen wipers & washers
- LED spotlighting
- 110V socket
- 12 V socket
- Hi fi radio / CD / MP3

Tankage

Tanks Fresh Water Tanks: 2 Stainless steel (100 Gallons X 2)

Fuel Tanks: 2 Stainless steel (317 Gallons X 2)

Propulsion

Engine 1:

Engine Brand: VOLVO PENTA

Year Built: 2014

Engine Model: D4

Engine Type: Inboard

Engine/Fuel Type: Diesel

Location: Starboard

Propeller: 3 blade propeller

Drive Type: Direct Drive

Engine Total Power: 300 HP

Engine 2:

Engine Brand: VOLVO PENTA

Year Built: 2014

Engine Model: D4

Engine Type: Inboard

Engine/Fuel Type: Diesel

Location: Port

Propeller: 3 blade propeller

Drive Type: Direct Drive

Engine Total Power: 300 HP

Deck Layout

Cockpit:

- Bench seat for 4
- Teak table for 8
- Sink on portside with hot and cold water tap
- Ice-box
- Big locker under the stairs with space for gas bottle
- Storage locker under bench seat
- Lighting by watertight spotlights
- Large teak decks on transoms with an integrated swim ladder on port side

Foredeck :

- Teak gunwale
- Large forward locker separated into 3 compartments (2 for mooring & 1 for storage)
- Polyester locker hood on jack
- Lounge deck area
- Side navigation LED lights

Flying bridge :

- Accessed by outside stairs
- Swiveling PMMA hatch – watertight closure of stairwell
- Helm station with leather covered stainless steel wheel
- Large instrument panel
- Dralon protective cover for instrument panel
- 2 pilot seats
- Bench seat for 4 with backrest next to helm station
- Bench seat for 6 with backrest behind helm station
- Seat and backrest cushions for the 2 bench seat

- Teak table for 8
- Large aft sundeck
- Flying bridge protected by PPMA windshield
- Navigation & anchor lights, radar & antennas support
- Courtesy lighting

Engine rooms :

- Accessed from the cockpit via deck hatch on hydraulic strut
- Aluminum ladders
- High performance sound-proofing
- LED rail lighting
- Steering gear
- Hot water heater
- A/C chiller
- House batteries
- Inverter/Battery Charger
- Genset
- Watermaker

Propulsion

Engines and equipment

- VOLVO D4-225 diesel engines, with the option to upgrade to Volvo D4-300 diesel engines, or Volvo IPS400
- Heavy duty stainless steel Ø 45 mm direct transmission shaft with V-shaped bracket
- Sea water cooled stainless steel / Carbon shaft seal
- Fixed four-blade propellers
- Engine cooled by fresh water / sea water exchanger
- Engine compartment ventilation by natural intake & mechanical extraction
- 7" color multifunction engine display at inside helm station
- 4" color multifunction engine display on fly bridge
- 2 twin electrical engine controls

Fuel system :

- One KEVLAR composite fuel tank per hull (separate port/starboard circuits), capacity 2 x 317G
- Electrical gauge for each tank (indicator at the inside helm station)
- Primary diesel/water separators & anti-bacteria filters
- Shut-off valves with remote control

Engines and equipment

- VOLVO D4-225 diesel engines, with the option to upgrade to Volvo D4-300 diesel engines, or Volvo IPS400
- Heavy duty stainless steel Ø 45 mm direct transmission shaft with V-shaped bracket
- Sea water cooled stainless steel / Carbon shaft seal
- Fixed four-blade propellers
- Engine cooled by fresh water / sea water exchanger
- Engine compartment ventilation by natural intake & mechanical extraction
- 7" color multifunction engine display at inside helm station
- 4" color multifunction engine display on fly bridge
- 2 twin electrical engine controls

Fuel system :

- One KEVLAR composite fuel tank per hull (separate port/starboard circuits), capacity 2 x 317G
- Electrical gauge for each tank (indicator at the inside helm station)
- Primary diesel/water separators & anti-bacteria filters
- Shut-off valves with remote control

Engines and equipment

- VOLVO D4-225 diesel engines, with the option to upgrade to Volvo D4-300 diesel engines, or Volvo IPS400
- Heavy duty stainless steel Ø 45 mm direct transmission shaft with V-shaped bracket
- Sea water cooled stainless steel / Carbon shaft seal
- Fixed four-blade propellers
- Engine cooled by fresh water / sea water exchanger
- Engine compartment ventilation by natural intake & mechanical extraction
- 7" color multifunction engine display at inside helm station
- 4" color multifunction engine display on fly bridge
- 2 twin electrical engine controls

Fuel system :

- One KEVLAR composite fuel tank per hull (separate port/starboard circuits), capacity 2 x 317G
- Electrical gauge for each tank (indicator at the inside helm station)
- Primary diesel/water separators & anti-bacteria filters
- Shut-off valves with remote control

Plumbing

- Fresh water tanks with electrical gauge & indicator at the inside helm station
- Capacity 2 X 93
- Electrical pump and pressurized water tank

- 20G water heater
- One electric bilge pump in each engine room
- One electric bilge pump in each hull in accommodation area
- Automatic running & audible/visual alarms at the inside helm station & buzzer on fly
- 3 hand-operated bilge pumps
- Fresh water outlet in anchor locker

Electrical System

Power circuit :

- Set of batteries for onboard energy supply 300 A/h 24 V
- 2 extra alternators 80 A / 24 V
- 1 battery 110 A/h 12V per engine
- 2 engine alternators 115A / 12V
- Manual emergency connection between port & starboard engine batteries

24 Volt System:

- Multiplexing distribution of 24 V functions
- Color touch screen for monitoring & control of 24 V functions at inside helm station
- Available output for adding additional equipment

110 Volt- Circuit supplied by inverter, generator, or shore-power :

- 24/110V 1200W inverter from house batteries
- Energy supply for 3 sockets (galley / chart table / aft port cabin)
- Energy supply for 110 V cooker hood & Piezo hob

Fittings

- Hydraulic steering system
- One steering compass
- Full peripheral stainless steel handrail on main deck and flying bridge
- Dralon dodger on flying bridge rail
- 2 stainless steel handrails along catwalk
- Stainless steel transom gates
- Swim ladder with cold and hot water hand-held shower on port transom
- 8 stainless steel mooring cleats (2 forward + 2 midships + 2 aft + 2 on transoms)
- Protection on transom corners
- 6 fenders with covers
- 3 x 12 m long mooring lines, diameter 20mm
- Flagpole

- Electrical windlass with chain counter protected by circuit breaker
- Local windlass control or monitored from flying bridge
- Anchor exit under pod with built-in two-part bridle system
- Stainless anchor roller
- Mooring fairlead on fore bulwark
- 1 aluminum mooring cleat (anchor well)
- Dual control horn

Исключения

При продаже яхты исключаются личные вещи владельца.

Отказ от ответственности

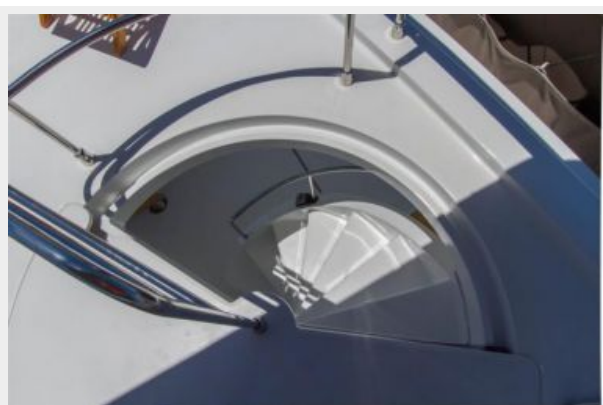
Компания предоставляет описание судна или яхты добросовестно, но не может гарантировать точность этой информации, а также не ручается за техническое состояние. Покупатель должен проинструктировать своих агентов или оценщиков исследовать представленную информацию более подробно, по собственному желанию. Продажа судна или яхты, изменение цены или снятие с продажи будет происходить без предварительного уведомления.

ФОТОГРАФИИ



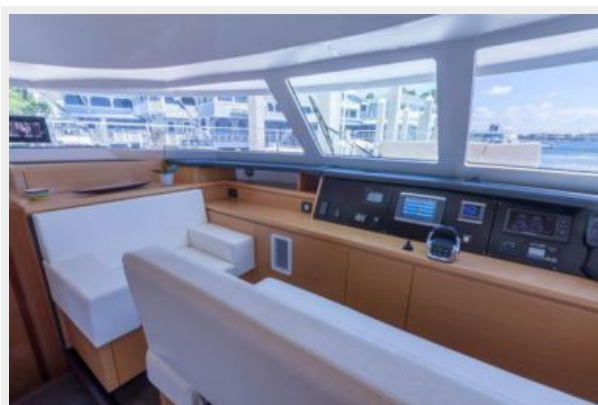
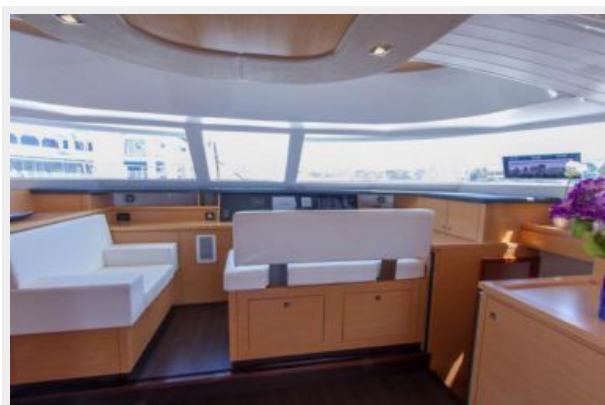


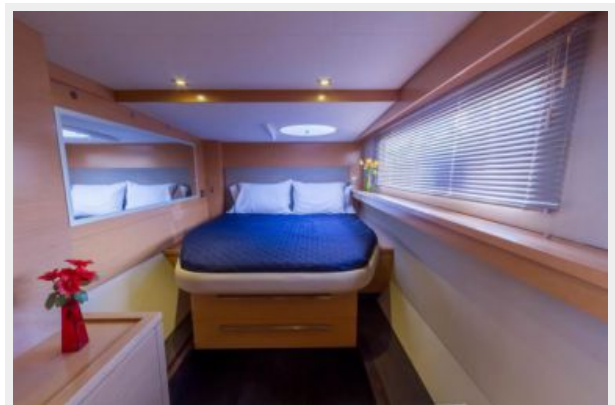
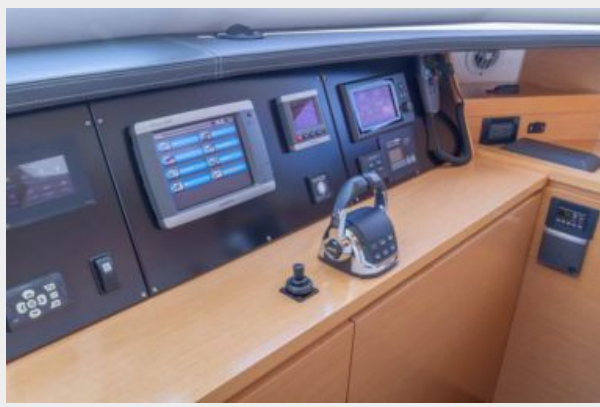


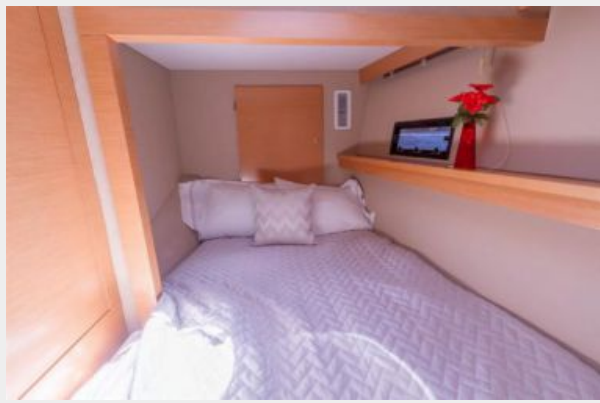
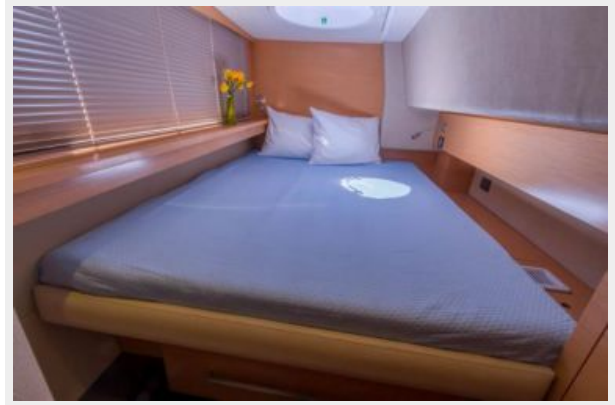














КОНТАКТЫ

Андрей Шестаков (Andrey Shestakov) – ведущий яхтенный брокер отдела продаж яхт и судов компании Shestakov Yacht Sales Inc. Официальный представитель Shestakov Yacht Sales Inc. для русскоговорящих клиентов в центральном офисе компании в Майами/Форт Лодердейл/Флорида/США.

Контактная информация

Email: andrey@shestakovyachtsales.com

Web: shestakovyachtsales.com

Телефоны

Краснодарский край: **+7(918)465-66-44**

США, Майами, Флорида: **+1(954)274-4435**

Время работы

Понедельник – Суббота: **9:00 - 21:00**
EDT

Воскресенье: **Закрито**

Адрес



Harbour Towne Marina, 850 NE 3rd St,
STE 213, Dania, FL 33004