

42FT 2003 BENETEAU 423 - 2 CABIN — BENETEAU



Builder: BENETEAU

Year Built: 2003

Model: Cruising Sailboat

Price: PRICE ON APPLICATION

Location: United States

LOA: 42' 0" (12.80m)

Beam: 12' 11" (3.94m)

Max Draft: 5' 7" (1.70m)

Our experienced yacht broker, Andrey Shestakov, will help you choose and buy a yacht that best suits your needs 42ft 2003 Beneteau 423 - 2 Cabin — BENETEAU from our catalogue. Presently, at Shestakov Yacht Sales Inc., we have a wide variety of yachts available on our sale's list. We also work in close contact with all the big yacht manufacturers from all over the world.

If you would like to buy a yacht 42ft 2003 Beneteau 423 - 2 Cabin — BENETEAU or would like help answering any questions concerning purchasing, selling or chartering a yacht, please call +1(954)274-4435

TABLE OF CONTENTS

TABLE OF CONTENTS	2
SPECIFICATIONS	3
Basic Information	3
Dimensions	3
Speed, Capacities and Weight	3
Accommodations	3
Hull and Deck Information	3
Engine Information	3
DETAILED INFORMATION	4
Key Additional Features	4
Standard Equipment	5
Sail Area	7
Keel Details	7
Specifications	7
Manufacturers Description	8
Exclusions	8
Disclaimer	9
PHOTOS	10
CONTACTS	26
Contact details	26
Telephones	26
Office hours	26
Address	26

SPECIFICATIONS

Basic Information

Category: Cruising Sailboat

Model Year: 2003

Year Built: 2003

Country: United States

Dimensions

LOA: 42' 0" (12.80m)

LWL: 38' 7" (11.76m)

Beam: 12' 11" (3.94m)

Max Draft: 5' 7" (1.70m)

Speed, Capacities and Weight

Displacement: 19797 Pounds

Water Capacity: 154 Gallons

Fuel Capacity: 53 Gallons

Accommodations

Total Berths: 6

Total Heads: 2

Hull and Deck Information

Hull Material: Fiberglass

Engine Information

Engines: 1

Manufacturer: Volvo

Model: D2-55

Engine Type: Inboard

Fuel Type: Diesel

DETAILED INFORMATION

Key Additional Features

New Kohler 9 KWH generator

Wifi antenna (Rogue Wave) with wireless in-boat wifi network

Custom Bimini cover with full dodger

Full cockpit enclosure panels for Bimini

Full insect screen for cockpit

Insect screens for all hatches/ports

2014 West Marine inflatable dingy

Nissan 2014 3.5 hp outboard

Freshwater and holding tank level monitoring system

Two anchors, one Bruce with rope/chain, one CQR with chain

Anchor bridle with shock absorber

Anchor marking buoy

2012 Standard Horizon VHF with AIS receiver

Raymarine E 80 Chart plotter (2012) with Platinum cards for East Coast, Florida & Bahamas, and Gulf

Raymarine radar system

Sirius/XM satellite weather receiver with info displayed on chart plotter

Fuel suction monitor for primary fuel filter

Nearly all lights converted to LEDs

High output alternator and original as spare

Charger/inverter (Oct 2013)

AM/FM/CD stereo (2012) with Bluetooth receiver

Full dense foam cockpit cushions

Recent bottom paint (Oct 2014) Interlux Ultra

(Jan 2014) Trojan house batteries

Icemaker

32" HD TV with DVD player with marine antenna system

MANY PAPER AND ELECTRONIC CHARTS

LOTS OF GEAR!

Standard Equipment

RUNNING RIGGING (1) Genoa halyard (2) Genoa sheets (1) Main halyard (1) Mainsheet (1) Main boom topping lift (1) Solid vang (2) Mainsheet traveler control lines

STANDING RIGGING Discontinuous SS 1X19 rigging: forestay, twin backstays, upper and intermediates, capshrouds, fwd lower and aft lower shrouds

SPARS Deck stepped, anodized aluminum roller furling mast. (optional classic mast available) Anodized, aluminum boom Mast step with 6 blocks Double aft swept spreaders

DECK GEAR (2) Genoa sheet tracks (2) LewmarÆ 48 CSTO genoa sheet winches, mounted on cockpit coaming (2) Lewmar 40 CSTO halyard/control line winches Profurl Æ genoa roller furling with drum above deck (1) Mainsheet track on coachroof (2) Stoppers, mainsheet & traveler control lines (6) Stoppers for control lines (including genoa halyard on the mast) (2) Winch handles

SAILS Performance cruising upgraded sails standard Roller furling mainsail 140% Roller furling genoa with cover & foam luff

MOORING & ANCHORING SS bow fitting with (2) anchor rollers (6) Aluminum mooring cleats Self bailing anchor locker in the bow Horizon express electrical windlass

EXTERIOR EQUIPMENT HULL & DECK Hot and cold transom/cockpit shower (1) Port cockpit locker (1) Starboard cockpit locker (1) LP gas locker aft port side of cockpit (1) Helm seat provides easy access to transom Teak inlaid cockpit seats (2) aft lockers Halyard hangers aft of coachroof (2) Winch handle pockets Built-in dodger coaming (2) SS handrails on coachroof Side decks w/molded raised bulwark w/teak cap rail Swim platform locker GRP steering pedestal w/instrument console Folding leaf cockpit table 2 winch handles, flag staff, owners manual

STEERING SYSTEM Composite rudder, rudder tube and quadrant Ss leather wrapped steering wheel (42i) Emergency tiller

PLUMBING Self-draining cockpit Manual bilge pump Electric bilge pump (1) Fiberglass fresh

water tank integrated into hull liner in the bow Hot water heater - 11 gallon capacity (2)
 Rectangular SS sinks in galley Fwd head features fiberglass wash hand basin w/faucet and
 separate shower stall w/hand held shower and support Aft head features fiberglass wash hand
 basin w/combo faucet & hand shower w/shower hose and support All showers drain
 w/separate electric drain pump

ELECTRICAL SYSTEM Grounded rig Conduit for standard and optional wiring 12 V. 28 function
 control panel 110 V. shore power socket on transom 110 V. control panel at chart table 7 x 110 V.
 outlets 40 amp battery charger Batteries: 1 x 100 amp engine, 2 x 200 amp Lights: Flush
 mounted halogen lights Fluorescent light in galley and heads Reading light in each cabin Bi-
 color navigation light Stern light Anchor light Combination deck and steaming light Mini spot light
 white/red lens at chart table Propane Gas Circuit Force 10Æ three-burner stove with oven

INTERIOR ACCOMMODATIONS Forward Cabin Headroom 6'1" Double berth island style
 Shelf on hull, both side (2) Drawers and (1) storage locker under berth (1) Hanging locker, port
 (1) Settee and storage locker port side

ELECTRICAL SYSTEM Grounded rig Conduit for standard and optional wiring 12 V. 28 function
 control panel 110 V. shore power socket on transom 110 V. control panel at chart table 7 x 110 V.
 outlets 40 amp battery charger Batteries: 1 x 100 amp engine, 2 x 200 amp Lights: Flush
 mounted halogen lights Fluorescent light in galley and heads Reading light in each cabin Bi-
 color navigation light Stern light Anchor light Combination deck and steaming light Mini spot light
 white/red lens at chart table Propane Gas Circuit Force 10Æ three-burner stove with oven

INTERIOR ACCOMMODATIONS Forward Cabin Headroom 6'1" Double berth (Island) style
 Shelf on hull, both side (2) Drawers and (1) storage locker under berth (1) Hanging locker, port
 (1) Settee and storage locker port side

2 Cabin Version Aft Cabin Headroom 6'4" Double berth Hanging locker Storage cabinet Shelf
 on hull Seat inboard of hanging locker

SALON Maximum 6'5" headroom U-shaped dinette (2) Cabinet with louvered doors Storage
 behind dinette with bottle racks Storage and access to plumbing & hot water heater under dinette
 Expandable table with leaf, converts into double berth with filler cushion Central settee with
 storage underneath AM/FM stereo/CD player with (4) speakers 3 Cabin Version Salon: Central
 settee with storage underneath

GALLEY Max headroom 6'4". Stove protection bar 3 burner LPG stove Ss storage baskets
 Tableware drawer Cabinets + microwave shelf above work space Trash can

2 Cabin Version Galley: GraniteÆ countertop Front and top opening fiberglass icebox 12 v.
 refrigeration/Freezer combo unit

SALON Maximum 6'5" headroom U-shaped dinette (2) Cabinet with louvered doors Storage
 behind dinette with bottle racks Storage and access to plumbing & hot water heater under dinette
 Expandable table with leaf, converts into double berth with filler cushion Central settee with

storage underneath AM/FM stereo/CD player with (4) speakers

2 Cabin Version Galley: GranicoatÆ countertop Front and top opening fiberglass icebox 12 v. refrigeration/Freezer combo unit

HEADS (2) Manual marine toilets w/22 gal holding tank Fiberglass sink, medicine cabinet, mirror and toilet accessories

COMPANIONWAY Headroom: 6'6" 1-part hinged, wood companionway steps with gas spring for easy access to engine room (2) Wooden handrails, companionway bulkheads

INTERIOR UPHOLSTERY Wood paneling on hull sides Fiberglass headliner in heads White vinyl headliner in salon & forward cabin

BALLAST Medium draft cast iron bulb keel (5'7" draft) Optional shoal and deep keels available

ENGINE EQUIPMENT VolvoÆ D2-55, 55hp diesel - high torque, low RPM 53 gal. Fuel capacity Rotomolded polyethylene fuel tank Engine control panel on cockpit coming 3-Bladed fixed prop Soundproof insulation in engine room Engine raw water filter RacorÆ fuel/water separator. Low 1661 Hours for her age.

VENTILATION 2 Cabin Version: Forward Cabin (1) Lewmar size 54 hatch, (1) Lewmar size 10 hatch Forward starboard toilet (1) Lewmar size 10 hatch Salon (2) Lewmar size 30 hatch (1) Skylight across deck above the salon Aft Starboard Galley (2) Opening Lewmar ports (1) Lewmar size 20 hatch Aft Port Chart Table (2) Opening Lewmar ports Aft Port Cabin (2) Opening Lewmar ports (1) Lewmar size 20 hatch 3 Cabin Version: Aft Starboard Cabin 2 opening Lewmar ports (1) Lewmar size 20 hatch Port Galley 1 Lewmar size 30 hatch & 1 opening Lewmar size 4 Aft Port Head (3) Opening Lewmar ports (1) Lewmar size 20 hatch

STANDARD CRUISING PACKAGE RaytheonÆ ST60 Tridata Raytheon ST60 Wind ICOMÆ M402 VHF marine radio AM/FM Stereo w/CD player Microwave Shore power cord Hot & cold cockpit shower Stern rail seats

Sail Area

IJPE : 720.00 sq ft I : 48.58 ft J : 16.50 ft P : 42.83 ft E : 14.83 ft Working Sail Area : 720.00 sq ft

Keel Details

Keel Type: Wing Max Draft: 5' 7"

Specifications

LOA.....	43'2"
Hull Length.....	41'8"
LWL.....	38'7"
Beam.....	12'11"
Displacement.....	19,797 lbs. (approx)
Standard Sail Area.....	881 sq. ft.
Draft.....	5' 7"
Ballast.....(optional)	5,569 lbs.
Fuel Capacity.....	53 gal.
Water.....	154 gal.
Construction.....	Marion, South Carolina, USA Hull Design: Groupe Finot

Manufacturers Description

Rarely does the appearance of a new model create as much excitement as this one. Following in the footsteps of the successful Beneteau 473, the Beneteau 423 has been enamoring sailors from coast to coast. Designed by the famous Groupe Finot, naval architects with more production yachts afloat than any other design firm, the Beneteau 423 has both brawn and beauty. She is built to sail confidently in any sea, yet lacks nothing in comfort or beauty. Below decks, she is all Beneteau with incredible detail to quality woodwork and liveaboard comfort. Above, she touts the finest in marine hardware, innovative features, and a design that makes single or double handed sailing a breeze. And only Beneteau, the world's largest manufacturer of sailboats, could create such an impressive performance cruiser at such an unbelievable value.

The Beneteau 423 represents the best that a century of boatbuilding can deliver. Designed to venture into various sailing conditions, she is built to CE Offshore A Category standards. Her hull is hand-laid solid GRP with a GRP structural grid. Her hull to deck joint and hull construction follow the Beneteau tradition of designed strength. In fact, Beneteau sailboats have logged over five million miles without a single recorded structural hull failure. On deck, there's top notch Lewmar® hardware and a cockpit designed for easy handling by one or two people. Her sails are performance cut Neil Pryde® roller furling or classic rigs. She also features more volume, larger fuel tanks, and a new generation of quiet, high torque/low RPM Volvo® auxiliary diesel engine.

Exclusions

Owner's personal belongings.

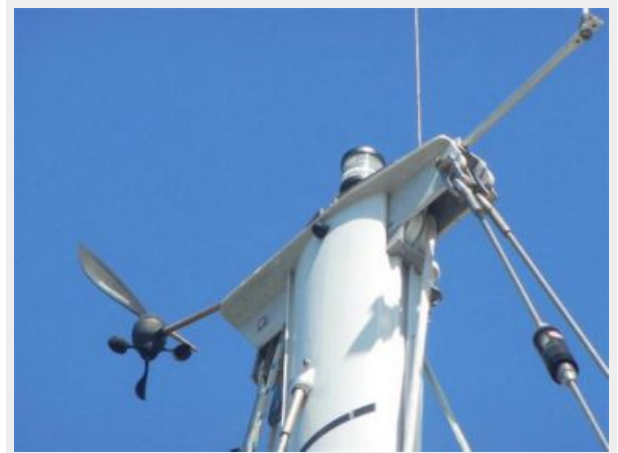
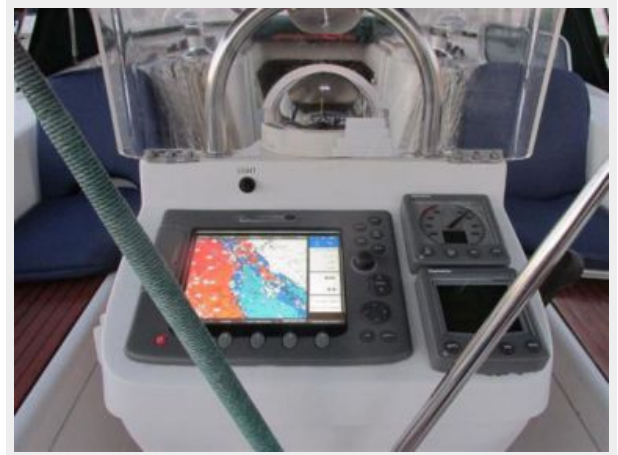
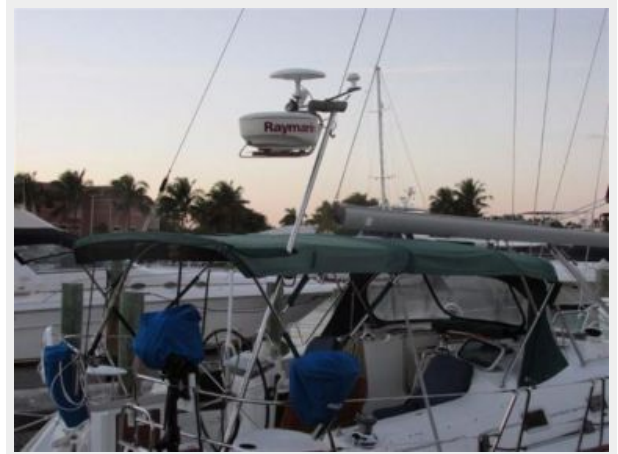
Disclaimer

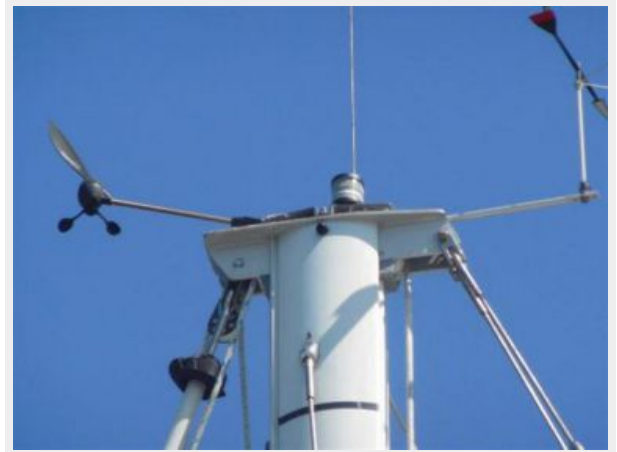
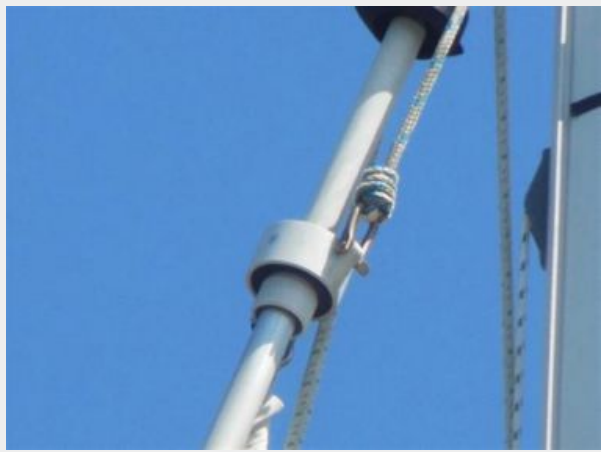
The Company offers the details of this vessel or yacht in good faith but cannot guarantee or warrant the accuracy of this information nor warrant the condition of the vessel. A buyer should instruct his representatives, agents, or his surveyors, to investigate such details as the buyer desires validated. This vessel or yacht is offered subject to prior sale, price change, or withdrawal without notice.

PHOTOS











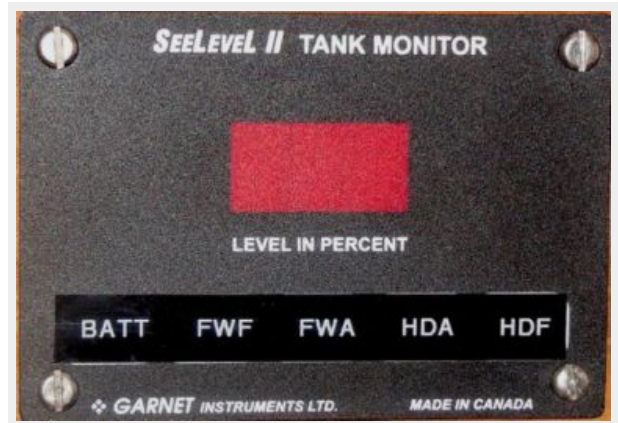


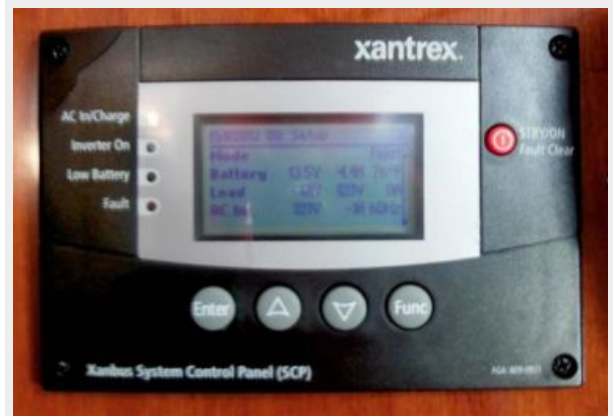


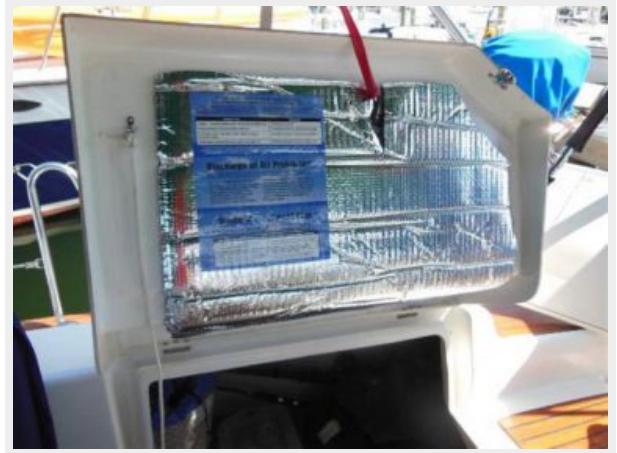


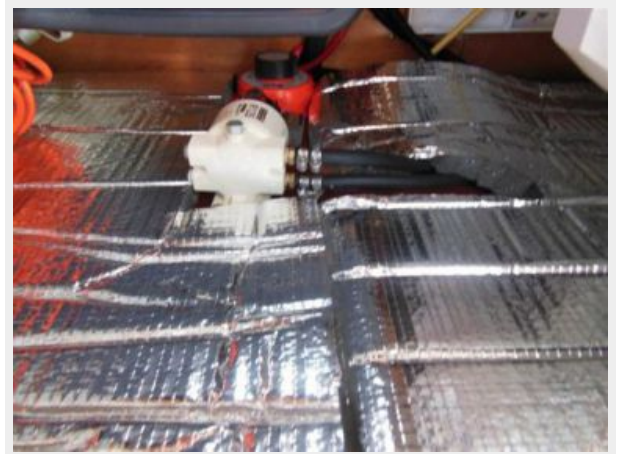




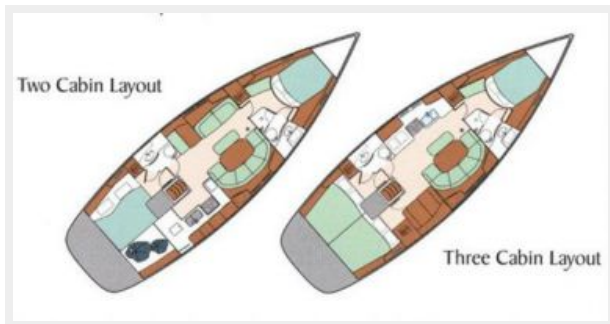












CONTACTS

Andrey Shestakov, leading yacht broker of the sales department of Shestakov Yacht Sales Inc. Shestakov Yacht Sales Inc., the official representative of the Miami/Fort Lauderdale FL headquarters.

Contact details

Email: andrey@shestakovyachtsales.com

Web: shestakovyachtsales.com/en/

Telephones

USA: +1(954)274-4435

Office hours

Monday – Saturday: **9:00 - 21:00** EDT

Sunday: **closed**

Address



Harbour Towne Marina, 850 NE 3rd St,
STE 213, Dania, FL 33004