

LOVE SHACK — CRUISERS



Builder: CRUISERS

Year Built: 2011

Model: Cruiser

Price: PRICE ON APPLICATION

Location: United States

LOA: 48' 0" (14.63m)

Beam: 14' 6" (4.42m)

Min Draft: 3' 6" (1.07m)

Cruise Speed: 23 Kts. (26 MPH)

Max Speed: 30 Kts. (35 MPH)

Our experienced yacht broker, Andrey Shestakov, will help you choose and buy a yacht that best suits your needs **Love Shack — CRUISERS** from our catalogue. Presently, at Shestakov Yacht Sales Inc., we have a wide variety of yachts available on our sale's list. We also work in close contact with all the big yacht manufacturers from all over the world.

If you would like to buy a yacht **Love Shack — CRUISERS** or would like help answering any questions concerning purchasing, selling or chartering a yacht, please call **+1(954)274-4435**

TABLE OF CONTENTS

TABLE OF CONTENTS	2
SPECIFICATIONS	5
Overview	5
Basic Information	5
Dimensions	5
Speed, Capacities and Weight	6
Accommodations	6
Hull and Deck Information	6
Engine Information	6
DETAILED INFORMATION	7
Overview	7
Salon-Upper Portside	7
Salon-Upper Starboard	7
Dinette - Lower	7
Galley	8
Master Stateroom	8
Master Head	9
VIP Stateroom	9
Guest Head	9
Helm	9
Electronics	10
Electrical System	10
Mechanical Equipment	10
Engine Room	10
Aft Deck	11
Cockpit	11
Decks-Bow	11
Exclusions	11

Disclaimer	11
PHOTOS	13
Upper Salon- Portside	13
Upper Salon- Portside	13
Upper Salon-TV	13
Lower Salon	13
Dinette	13
Dinette	13
Galley	14
Galley	14
Master Stateroom	14
Master Stateroom Vanity	14
Washer/Dryer Combo	14
Master Head	14
Master Shower	15
Forward Stateroom	15
Forward Stateroom TV	15
Forward Head	15
Forward Shower	15
Helm	15
Electronics	16
Electronics	16
Electrical System	16
Engine Room Access	16
Engine Room	16
Engine Room	16
Engine Room	17
Generator	17
Aft Cockpit	17

Aft Refrigerator/Grill	17
Aft Ice Maker	17
Hardtop	17
Transom	18
Bow Profile	18
Profile	18
Profile	18
CONTACTS	19
Contact details	19
Telephones	19
Office hours	19
Address	19

SPECIFICATIONS

Overview

"Love Shack" is a well cared for 2011 Cruisers Yachts 48 Cantius.

The Cruisers Yachts 48 Cantius is a yacht that has been designed for the 21st century with a focus on providing it owners the maximum amount of usable space, while at the same time, providing an attractive modern design.

The 48 Cantius is clearly targeted to veteran boaters who intend to go cruising: maybe with another couple or their children for weekend outings; a possible two week or longer cruise. In addition, the boat will always be capable of providing pleasant day trips where it serves as more of a swim platform and cabana, or evening cruises when it becomes a bistro afloat with the best table on the water

Saying that it is targeted to "veteran" boaters, simply because there are a number of unique (or, if not unique then rarely seen) aspects of the design which are only likely to be fully appreciated by experienced boaters.

Basic Information

Category: Cruiser

Sub Category: Express

Model Year: 2011

Year Built: 2011

Country: United States

Dimensions

LOA: 48' 0" (14.63m)

Beam: 14' 6" (4.42m)

Min Draft: 3' 6" (1.07m)

Speed, Capacities and Weight

Cruise Speed: 23 Kts. (26 MPH)

Max Speed: 30 Kts. (35 MPH)

Displacement: 32700 Pounds

Water Capacity: 80 Gallons

Holding Tank: 50 Gallons

Fuel Capacity: 350 Gallons

Accommodations

Total Cabins: 2

Total Heads: 2

Hull and Deck Information

Hull Material: Fiberglass

Hull Color: Navy

Hull Designer: Cruisers

Engine Information

Engines: 2

Manufacturer: Volvo

Model: IPS 600

Engine Type: Inboard

Fuel Type: Diesel

DETAILED INFORMATION

Overview

"Love Shack" is a groundbreaking new model from Cruisers Yachts and upper and lower salon with sliding patio doors enclosing the upper salon and helm station. The cockpit and upper salon are on the same level and the patio doors allow a free flow of traffic when entertaining.

Below deck is an open and airy lower salon with L-shaped sofa, flat screen TV and galley. The master stateroom is mid-ship and is full beam with a private head and separate shower stall. The guest stateroom is forward with centerline berth and split head design with a show to port and head/vanity to starboard.

This vessel features Wenge wood cabinetry and hardwood floors. you must see this award-winning vessel to appreciate the innovative design. Powered by Twin Volvo IPS-600 with Joystick docking and precision handling. Please call today to schedule your private showing.

Salon-Upper Portside

Enter the upper salon through the tri-slide glass door and experience 360 degrees of visibility found on one level.

- Two 16,000 BTU AC/Heat
- L-shaped lounge with expanding table
- Excellent visibility while under way
- Walk-thru windshield
- Hardtop with sliding sunroof and shade
- Sony AM/FM/CD/SAT with 10 speakers
- All windows have blinds or covers

Salon-Upper Starboard

- Pop-up 32" Samsung HD LED TV
- Direct TV HD receiver
- Blueray DVD player
- Sink above and storage below
- Ocean-Air Blinds
- Opening windows and sliding sunroof

Dinette - Lower

- Abundant natural light
- L-shaped sofa/sleeper by Flexsteel - sleeps two
- Storage cabinets overhead
- Entrance to VIP/Day Head
- Large removable dining table
- Access to AC/DC shore power panel
- Halogen and LED lighting
- Amtico flooring- Wenge
- Central vacuum system

Galley

- Solid surface countertop
- Double stainless steel sink
- All electric galley
- Two burner electric stove
- Full size dual voltage refrigerator/freezer
- Microwave/convection/baking oven
- 32" Sony LED TV
- Abundant upper and lower cabinets/drawers
- Halogen and LED lighting
- Incredible natural light

Master Stateroom

The boater will be the captain of their ship in the master stateroom which is the mid cabin. With 6'6" headroom at the foot of the bed, it is a huge beam-width stateroom in which to ensconce oneself. A built-in vanity like one sees on much larger boats makes extended living aboard this boat more pleasant and comfortable. The upper portion of the port side storage has a washer/dryer combination. The island queen berth is easily entered from either side and the mattress is therapeutic foam for comfort.

- Island Queen Berth
- Duvet cover and pillow shams
- Fitted and flat sheet set
- 32" Sony LED HD TV
- Blu-ray DVD player
- Large windows with blinds
- 3 drawer starboard of bed
- Cedar lined hanging locker
- LED and Halogen lights
- Combo washer/dryer

- Vanity sink with lots of storage cabinets
- Excellent head room

Master Head

- Separate shower stall
- Exhaust fan ventilation
- Dometic Electric toilet
- 11 Gallon water heater
- Storage locker
- Additional hanging bars
- Towel package

VIP Stateroom

- Center Line Island Berth
- Duvet cover and pillow shams
- Fitted and flat sheets
- Sony 22" LCD HD TV/DVD
- Two hanging lockers
- Over head storage cabinets
- Abundance of natural light

Guest Head

- Split head design with toilet and vanity to starboard
- Separate large shower stall to port
- Exhaust fan ventilation
- Dometic electric toilet
- Abundant storage
- Sink and vanity
- Towel package

Helm

- Double wide helm seat with flip-up bolster
- Electronic engine controls
- Joystick docking system
- 7" LED Volvo display
- Digital depth finder

- Windlass and spot light remote control
- Windshield washer and wiper

Electronics

- (2) Garmin 7212 GPS/Chartplotter
- (1) Garmin Auto Pilot
- (1) Garmin Radar 406 X HD 4Kw
- (1) Garmin VHF 300 Radio with 8" Antenna
- (1) Garmin 4" Marine Instrument
- (1) Intellian SAT TV System

Electrical System

- 13.5kW Kohler generator with 462 hours
- Glendinning Cable Master 75' Cord 240V/50Amp with remote control
- Battery charging system and monitor
- Battery parallel switch
- Galvanic isolator
- 11 Gallon water heater
- GFI outlets

Mechanical Equipment

- Hydraulic pump/transom lift
- Algae-X fuel conditioner
- Oil changer system for engines and generator
- 4-16,000 BTU AC/Heat - total 64,000 BTU's
- 3-Bilge pumps
- 3- Carbon monoxide detectors
- Electro-hydraulic trim tabs
- Smoke detectors - Networked

Engine Room

- Volvo IPS 600 with 329 hours
- Stand-up engine room
- Fuel cross-over system
- Fire extinguisher -automatic

Aft Deck

- Electric grill
- Ice maker
- Refrigerator
- U-shaped seating - converts to sun lounge with table
- Self bailing
- Engine room access
- Storage under seating
- Drink holders
- Rod holders

Cockpit

- Swim platform - extended hydraulic lift with dinghy cradle
- Large trunk storage
- Dual transom doors
- Hot and cold shower
- LED courtesy lights
- Weather covers for seats and table
- Trash can

Decks-Bow

- Anchor polished stainless steel
- Chaise lounge- foredeck cushions with covers
- Walk-through windshield
- Wide 14" side decks
- Bow storage locker
- Welded stainless steel bow rails

Exclusions

Owner's personal belongings.

Disclaimer

The Company offers the details of this vessel or yacht in good faith but cannot guarantee or warrant the accuracy of this information nor warrant the condition of the vessel. A buyer should instruct his representatives, agents, or his surveyors, to investigate such details as the buyer desires validated. This vessel or yacht is offered subject to prior sale, price change, or withdrawal

without notice.

PHOTOS

Upper Salon- Portside



Upper Salon- Portside



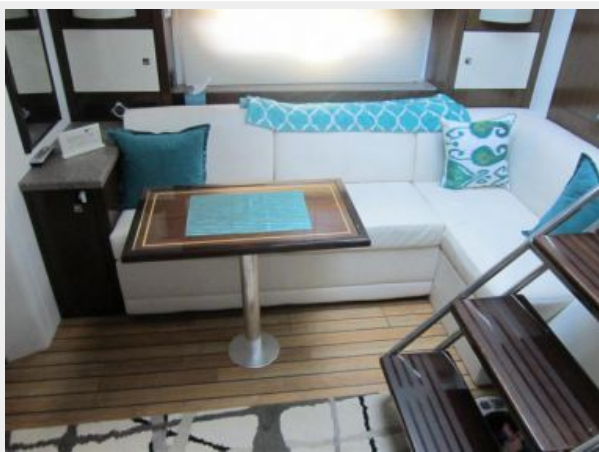
Upper Salon-TV



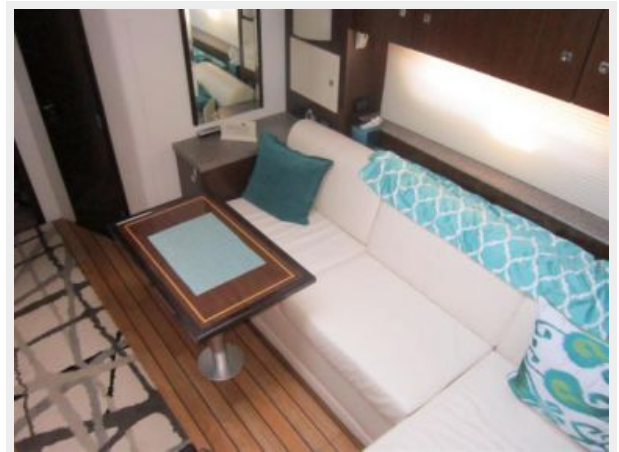
Lower Salon



Dinette



Dinette



Galley



Galley



Master Stateroom



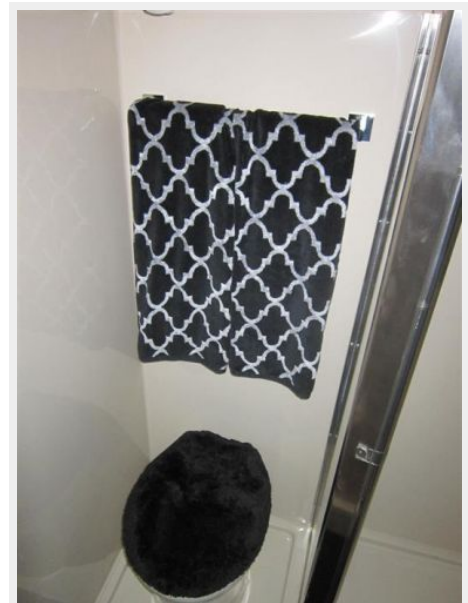
Master Stateroom Vanity



Washer/Dryer Combo



Master Head



Master Shower



Forward Stateroom



Forward Stateroom TV



Forward Head



Forward Shower



Helm



Electronics



Electronics



Electrical System



Engine Room Access



Engine Room



Engine Room



Engine Room



Generator



Aft Cockpit



Aft Refrigerator/Grill



Aft Ice Maker



Hardtop



Transom



Bow Profile



Profile



Profile



CONTACTS

Andrey Shestakov, leading yacht broker of the sales department of Shestakov Yacht Sales Inc. Shestakov Yacht Sales Inc., the official representative of the Miami/Fort Lauderdale FL headquarters.

Contact details

Email: andrey@shestakovyachtsales.com

Web: shestakovyachtsales.com/en/

Telephones

USA: +1(954)274-4435

Office hours

Monday – Saturday: **9:00 - 21:00** EDT

Sunday: **closed**

Address



Harbour Towne Marina, 850 NE 3rd St,
STE 213, Dania, FL 33004