

LOVE SHACK — CRUISERS



Судостроитель: CRUISERS

Год постройки: 2011

Модель: Крейсер

Цена: **ЦЕНА ЯХТЫ ПО ЗАПРОСУ**

Местонахождение: United States

Длина общая: 48' 0" (14.63m)

Ширина: 14' 6" (4.42m)

Мин. осадка: 3' 6" (1.07m)

Крейс. скорость: 23 Kts. (26 MPH)

Макс. скорость: 30 Kts. (35 MPH)

Купить Love Shack — CRUISERS а также выбрать подходящую вам яхту из нашего каталога яхт вам поможет опытный яхтенный брокер Андрей Шестаков. На сегодняшний день компания Shestakov Yacht Sales Inc. имеет большое количество яхт в собственном списке продаж, а также тесно сотрудничает со всеми крупными яхтенными производителями по всему миру.

Для того чтобы купить яхту Love Shack — CRUISERS а также проконсультироваться по любому вопросу связанному с покупкой, продажей, чартером яхт позвоните по телефону **+7(918)465-66-44**.

ОГЛАВЛЕНИЕ

| | |
|-------------------------------|----|
| ОГЛАВЛЕНИЕ | 2 |
| ХАРАКТЕРИСТИКИ | 5 |
| Обзор | 5 |
| Основная информация | 5 |
| Размеры | 5 |
| Скорость, вместимость и масса | 6 |
| Размещение | 6 |
| Корпус и палуба | 6 |
| Информация о двигателе | 6 |
| ПОДРОБНОЕ ОПИСАНИЕ | 7 |
| Overview | 7 |
| Salon-Upper Portside | 7 |
| Salon-Upper Starboard | 7 |
| Dinette - Lower | 7 |
| Galley | 8 |
| Master Stateroom | 8 |
| Master Head | 9 |
| VIP Stateroom | 9 |
| Guest Head | 9 |
| Helm | 9 |
| Electronics | 10 |
| Electrical System | 10 |
| Mechanical Equipment | 10 |
| Engine Room | 10 |
| Aft Deck | 11 |
| Cockpit | 11 |
| Decks-Bow | 11 |
| Исключения | 11 |

| | |
|--------------------------|----|
| Отказ от ответственности | 11 |
| ФОТОГРАФИИ | 13 |
| Upper Salon- Portside | 13 |
| Upper Salon- Portside | 13 |
| Upper Salon-TV | 13 |
| Lower Salon | 13 |
| Dinette | 13 |
| Dinette | 13 |
| Galley | 14 |
| Galley | 14 |
| Master Stateroom | 14 |
| Master Stateroom Vanity | 14 |
| Washer/Dryer Combo | 14 |
| Master Head | 14 |
| Master Shower | 15 |
| Forward Stateroom | 15 |
| Forward Stateroom TV | 15 |
| Forward Head | 15 |
| Forward Shower | 15 |
| Helm | 15 |
| Electronics | 16 |
| Electronics | 16 |
| Electrical System | 16 |
| Engine Room Access | 16 |
| Engine Room | 16 |
| Engine Room | 16 |
| Engine Room | 17 |
| Generator | 17 |
| Aft Cockpit | 17 |

| | |
|------------------------|----|
| Aft Refrigerator/Grill | 17 |
| Aft Ice Maker | 17 |
| Hardtop | 17 |
| Transom | 18 |
| Bow Profile | 18 |
| Profile | 18 |
| Profile | 18 |
| КОНТАКТЫ | 19 |
| Контактная информация | 19 |
| Телефоны | 19 |
| Время работы | 19 |
| Адрес | 19 |

ХАРАКТЕРИСТИКИ

Обзор

"Love Shack" is a well cared for 2011 Cruisers Yachts 48 Cantius.

The Cruisers Yachts 48 Cantius is a yacht that has been designed for the 21st century with a focus on providing it owners the maximum amount of usable space, while at the same time, providing an attractive modern design.

The 48 Cantius is clearly targeted to veteran boaters who intend to go cruising: maybe with another couple or their children for weekend outings; a possible two week or longer cruise. In addition, the boat will always be capable of providing pleasant day trips where it serves as more of a swim platform and cabana, or evening cruises when it becomes a bistro afloat with the best table on the water

Saying that it is targeted to "veteran" boaters, simply because there are a number of unique (or, if not unique then rarely seen) aspects of the design which are only likely to be fully appreciated by experienced boaters.

Основная информация

Тип судна: Крейсер

Подкатегория: Express

Модельный год: 2011

Год постройки: 2011

Страна: United States

Размеры

Длина общая: 48' 0" (14.63m)

Ширина: 14' 6" (4.42m)

Мин. осадка: 3' 6" (1.07m)

Скорость, вместимость и масса

Крейс. скорость: 23 Kts. (26 MPH)

Макс. скорость: 30 Kts. (35 MPH)

Водоизмещение: 32700 Pounds

Вместимость воды: 80 Gallons

Вместимость сточного бака: 50 Gallons

Объем топливного бака: 350 Gallons

Размещение

Всего кают: 2

Всего ком. состава: 2

Корпус и палуба

Материал корпуса: Fiberglass

Цвет корпуса: Navy

Дизайнер корпуса: Cruisers

Информация о двигателе

Двигатели: 2

Производитель: Volvo

Модель: IPS 600

Тип двигателя: Inboard

Тип топлива: Diesel

ПОДРОБНОЕ ОПИСАНИЕ

Overview

"Love Shack" is a groundbreaking new model from Cruisers Yachts and upper and lower salon with sliding patio doors enclosing the upper salon and helm station. The cockpit and upper salon are on the same level and the patio doors allow a free flow of traffic when entertaining.

Below deck is an open and airy lower salon with L-shaped sofa, flat screen TV and galley. The master stateroom is mid-ship and is full beam with a private head and separate shower stall. The guest stateroom is forward with centerline berth and split head design with a show to port and head/vanity to starboard.

This vessel features Wenge wood cabinetry and hardwood floors. you must see this award-winning vessel to appreciate the innovative design. Powered by Twin Volvo IPS-600 with Joystick docking and precision handling. Please call today to schedule your private showing.

Salon-Upper Portside

Enter the upper salon through the tri-slide glass door and experience 360 degrees of visibility found on one level.

- Two 16,000 BTU AC/Heat
- L-shaped lounge with expanding table
- Excellent visibility while under way
- Walk-thru windshield
- Hardtop with sliding sunroof and shade
- Sony AM/FM/CD/SAT with 10 speakers
- All windows have blinds or covers

Salon-Upper Starboard

- Pop-up 32" Samsung HD LED TV
- Direct TV HD receiver
- Blu-ray DVD player
- Sink above and storage below
- Ocean-Air Blinds
- Opening windows and sliding sunroof

Dinette - Lower

- Abundant natural light
- L-shaped sofa/sleeper by Flexsteel - sleeps two
- Storage cabinets overhead
- Entrance to VIP/Day Head
- Large removable dining table
- Access to AC/DC shore power panel
- Halogen and LED lighting
- Amtico flooring- Wenge
- Central vacuum system

Galley

- Solid surface countertop
- Double stainless steel sink
- All electric galley
- Two burner electric stove
- Full size dual voltage refrigerator/freezer
- Microwave/convection/baking oven
- 32" Sony LED TV
- Abundant upper and lower cabinets/drawers
- Halogen and LED lighting
- Incredible natural light

Master Stateroom

The boater will be the captain of their ship in the master stateroom which is the mid cabin. With 6'6" headroom at the foot of the bed, it is a huge beam-width stateroom in which to ensconce oneself. A built-in vanity like one sees on much larger boats makes extended living aboard this boat more pleasant and comfortable. The upper portion of the port side storage has a washer/dryer combination. The island queen berth is easily entered from either side and the mattress is therapeutic foam for comfort.

- Island Queen Berth
- Duvet cover and pillow shams
- Fitted and flat sheet set
- 32" Sony LED HD TV
- Blu-ray DVD player
- Large windows with blinds
- 3 drawer starboard of bed
- Cedar lined hanging locker
- LED and Halogen lights
- Combo washer/dryer

- Vanity sink with lots of storage cabinets
- Excellent head room

Master Head

- Separate shower stall
- Exhaust fan ventilation
- Dometic Electric toilet
- 11 Gallon water heater
- Storage locker
- Additional hanging bars
- Towel package

VIP Stateroom

- Center Line Island Berth
- Duvet cover and pillow shams
- Fitted and flat sheets
- Sony 22" LCD HD TV/DVD
- Two hanging lockers
- Over head storage cabinets
- Abundance of natural light

Guest Head

- Split head design with toilet and vanity to starboard
- Separate large shower stall to port
- Exhaust fan ventilation
- Dometic electric toilet
- Abundant storage
- Sink and vanity
- Towel package

Helm

- Double wide helm seat with flip-up bolster
- Electronic engine controls
- Joystick docking system
- 7" LED Volvo display
- Digital depth finder

- Windlass and spot light remote control
- Windshield washer and wiper

Electronics

- (2) Garmin 7212 GPS/Chartplotter
- (1) Garmin Auto Pilot
- (1) Garmin Radar 406 X HD 4Kw
- (1) Garmin VHF 300 Radio with 8" Antenna
- (1) Garmin 4" Marine Instrument
- (1) Intellian SAT TV System

Electrical System

- 13.5kW Kohler generator with 462 hours
- Glendinning Cable Master 75' Cord 240V/50Amp with remote control
- Battery charging system and monitor
- Battery parallel switch
- Galvanic isolator
- 11 Gallon water heater
- GFI outlets

Mechanical Equipment

- Hydraulic pump/transom lift
- Algae-X fuel conditioner
- Oil changer system for engines and generator
- 4-16,000 BTU AC/Heat - total 64,000 BTU's
- 3-Bilge pumps
- 3- Carbon monoxide detectors
- Electro-hydraulic trim tabs
- Smoke detectors - Networked

Engine Room

- Volvo IPS 600 with 329 hours
- Stand-up engine room
- Fuel cross-over system
- Fire extinguisher -automatic

Aft Deck

- Electric grill
- Ice maker
- Refrigerator
- U-shaped seating - converts to sun lounge with table
- Self bailing
- Engine room access
- Storage under seating
- Drink holders
- Rod holders

Cockpit

- Swim platform - extended hydraulic lift with dinghy cradle
- Large trunk storage
- Dual transom doors
- Hot and cold shower
- LED courtesy lights
- Weather covers for seats and table
- Trash can

Decks-Bow

- Anchor polished stainless steel
- Chaise lounge- foredeck cushions with covers
- Walk-through windshield
- Wide 14" side decks
- Bow storage locker
- Welded stainless steel bow rails

Исключения

При продаже яхты исключаются личные вещи владельца.

Отказ от ответственности

Компания предоставляет описание судна или яхты добросовестно, но не может гарантировать точность этой информации, а также не ручается за техническое состояние. Покупатель должен проинструктировать своих агентов или оценщиков исследовать представленную информацию более подробно, по собственному желанию.

Продажа судна или яхты, изменение цены или снятие с продажи будет происходить без предварительного уведомления.

ФОТОГРАФИИ

Upper Salon- Portside



Upper Salon- Portside



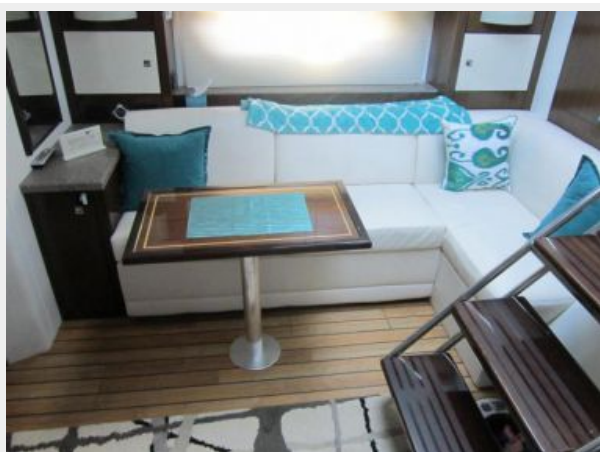
Upper Salon-TV



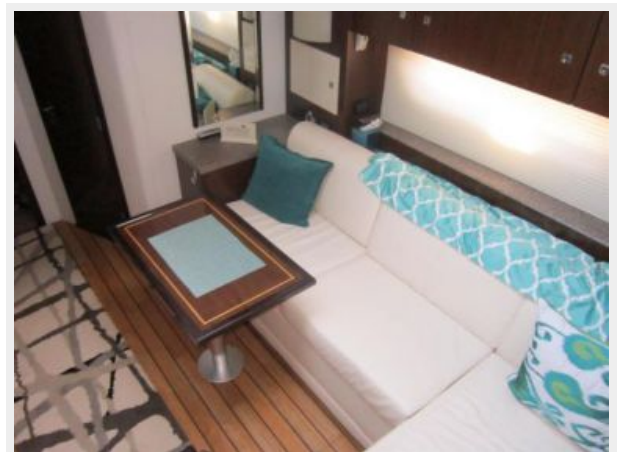
Lower Salon



Dinette



Dinette



Galley



Galley



Master Stateroom



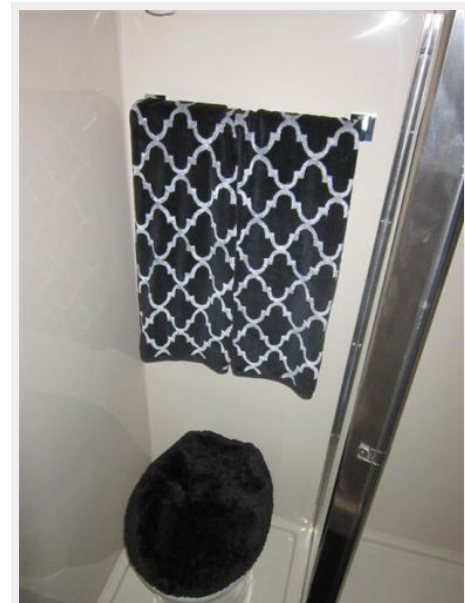
Master Stateroom Vanity



Washer/Dryer Combo



Master Head



Master Shower



Forward Stateroom



Forward Stateroom TV



Forward Head



Forward Shower



Helm



Electronics



Electronics



Electrical System



Engine Room Access



Engine Room



Engine Room



Engine Room



Generator



Aft Cockpit



Aft Refrigerator/Grill



Aft Ice Maker



Hardtop



Transom



Bow Profile



Profile



Profile



КОНТАКТЫ

Андрей Шестаков (Andrey Shestakov) – ведущий яхтенный брокер отдела продаж яхт и судов компании Shestakov Yacht Sales Inc. Официальный представитель Shestakov Yacht Sales Inc. для русскоговорящих клиентов в центральном офисе компании в Майами/Форт Лодердейл/Флорида/США.

Контактная информация

Email: andrey@shestakovyachtsales.com

Web: shestakovyachtsales.com

Телефоны

Краснодарский край: **+7(918)465-66-44**

США, Майами, Флорида: **+1(954)274-4435**

Время работы

Понедельник – Суббота: **9:00 - 21:00**
EDT

Воскресенье: **Закрито**

Адрес



Harbour Towne Marina, 850 NE 3rd St,
STE 213, Dania, FL 33004