

LSX1 — LAZZARA



Builder: LAZZARA

Year Built: 2009

Model: Motor Yacht

Price: PRICE ON APPLICATION

Location: United States

LOA: 75' 0" (22.86m)

Beam: 18' 2" (5.54m)

Max Draft: 3' 6" (1.07m)

Our experienced yacht broker, Andrey Shestakov, will help you choose and buy a yacht that best suits your needs **LSX1 — LAZZARA** from our catalogue. Presently, at Shestakov Yacht Sales Inc., we have a wide variety of yachts available on our sale's list. We also work in close contact with all the big yacht manufacturers from all over the world.

If you would like to buy a yacht **LSX1 — LAZZARA** or would like help answering any questions concerning purchasing, selling or chartering a yacht, please call **+1(954)274-4435**

TABLE OF CONTENTS

TABLE OF CONTENTS	2
SPECIFICATIONS	8
Overview	8
Basic Information	8
Dimensions	8
Speed, Capacities and Weight	9
Accommodations	9
Hull and Deck Information	9
Engine Information	9
DETAILED INFORMATION	10
Upgrades	10
Salon	10
Galley/Dinette	11
Master Stateroom	11
Master Head	12
Forward VIP Stateroom	12
Forward VIP Head	12
Port & VIP Staterooms	13
Port & Starboard VIP Head	13
Aft Stateroom (Crew Quarters)	13
Aft Head	14
Laundry Center	14
Interior Lighting	14
Communication/Navigation	14
Navigation	14
Alarms/Monitors	14
Engine & Mechanical Equipment	15
Generator	16

Electrical Equipment	16
Electrical Grounding	16
Exterior Lighting	16
Shore Power	16
Safety & Fire Protection	17
Deck	17
Exclusions	18
Exclusions	18
Disclaimer	18
PHOTOS	19
Salon	19
Salon	19
Salon	19
Salon	19
Salon	19
Salon	19
Salon	20
Salon Wetbar	20
Salon Wetbar	20
Salon Wetbar	20
Day Head	20
Salon Glass Storage	20
Galley/Dinette	21
Galley/Dinette	21
Galley	21
Galley	21
Galley	21
Galley Indirect Lighting	21
Galley Indirect Lighting	22

Master Stateroom	22
Master Stateroom	22
Master Stateroom	22
Master Stateroom	22
Master Stateroom	22
Master Stateroom	23
Master Stateroom	23
Master Head	23
Master Head	23
Master Shower	23
Master Closet	23
Companion Way	24
Forward VIP Stateroom	24
Forward VIP Stateroom	24
Forward VIP Stateroom	24
Forward VIP Stateroom	24
Forward Head	24
Forward Head	25
Starboard VIP Statroom	25
Starboard VIP Stateroom	25
Starboard Head	25
Starboard Head	25
Port VIP Stateroom	25
Port VIP Stateroom	26
Port Head	26
Washer/Dryer Combo	26
Crew Quaters	26
Crew Head	26
Crew Head	26

Helm	27
Helm	27
Helm	27
Helm	27
Helm	27
Helm	27
Helm	28
Helm	28
Equipment Room	28
Equipment Room	28
Equipment Room	28
Equipment Room	28
Engine Room	29
Engine Room	29
Engine Room	29
Engine Room	29
Engine Room	29
Aft Deck	29
Aft Deck	30
Aft Deck	30
Aft Deck	30
Aft Deck	30
Aft Deck	30
Aft Deck	30
Aft Deck	31
Aft Deck	31
Aft Deck	31
Aft Deck	31
Aft Sun Lounge	31

Aft Sun Lounge	31
Docking Station	32
Starboard Side	32
Portside	32
Portside	32
Portside Bow	32
Portside Bow	32
Bow	33
Bow Sun Pad	33
Bow Sun Pad	33
Bow Sun Pad	33
Bow Sun Pad	33
Bow Sun Pad	33
Bow Sun Pad	33
Ground Tackle	34
Antennas	34
Windshield Wipers	34
Gates	34
Gates	34
Gates	34
Aft Sunpad	35
Cleats	35
Storage	35
Swim Platform	35
Swim Platform	35
Transom	35
Tender Storage	36
Tender Storage	36
Transom	36
Transom	36

Transom Profile	36
Profile	36
Profile	37
Profile	37
Profile	37
Profile	37
Profile	37
Profile	37
Profile	37
Profile	38
Profile	38
Profile	38
Profile	38
CONTACTS	39
Contact details	39
Telephones	39
Office hours	39
Address	39

SPECIFICATIONS

Overview

Low hours, Bottom paint and Prop Speed just done, Brand new exterior cushions that has never seen sunlight. Boat is in excellent condition and ready for its new owner.

It's hard to imagine one yacht being everything to everybody, but the revolutionary Lazzara LSX Quad 75 exceeds expectations on every level. Lazzara has evolved its signature lines to reflect a combination of European style coupled with American boldness. Onlookers will stand in awe, whether she's dockside or cutting across the ocean at full throttle. The layout is designed with comfort and convenience in mind. Technological considerations maximize entertainment and safety options. From a performance standpoint the engines and drive systems make the LSX the most user-friendly large yacht on the market.

The Volvo Penta IPS system is ideal because its four-engine configuration delivers the most power at the highest scale of economy. Furthermore, the joystick operation makes for effortless handling of this extraordinary vessel, even for novice captains.

This vessel is located in Tampa, FL and is equipped with a power converter and can be used with both European and US shore power. This vessel has European receptacles.

Not for Sale While in US Waters to US Citizens

Basic Information

Category: Motor Yacht

Model Year: 2009

Year Built: 2009

Country: United States

Dimensions

LOA: 75' 0" (22.86m)

Beam: 18' 2" (5.54m)

Max Draft: 3' 6" (1.07m)

Clearance: 17' 0" (5.18m)

Speed, Capacities and Weight

Displacement: 81000 Pounds

Water Capacity: 200 Gallons

Fuel Capacity: 830 Gallons

Accommodations

Total Cabins: 8

Total Heads: 5

Hull and Deck Information

Hull Material: Fiberglass

Hull Color: White

Engine Information

Engines: 4

Manufacturer: Volvo

Model: IPS 600

Engine Type: Inboard

Fuel Type: Diesel

DETAILED INFORMATION

Upgrades

- All Appliances are Miele
- Satellite TV
- Trackvision M7

Brownie Hookah Diving Pkg:

- B230X includes an oil free electric compressor and reservoir bottle, powered level winding reel with 150ft of hose, 2 dive sets with hose, belts and regulators

Boat Tender Pkg:

- 10 ft tender 4 stroke with Jet Drive

Exterior Teak Pkg:

- Teak weather decks and bow decks
- Sunbrella rail covers
- Teak aft deck table

Underwater Lighting & Camera Pkg:

- Six high intensity metal halide underwater lights
- Sea Vision underwater color camera with output to LCD monitor at helm station

Watermaker:

- Sea Recovery reverse osmosis watermaker, 450 gallon per day

Salon

- Solé 42 " LCD TV with Apple TV and PlayStation 3
- Bose Lifetyle 48 series III home theater system with surround sound
- Skybox Satellite receiver
- Overhead Lighting LED
- Night light (2 each, red)
- Lighting 120 low volt, halogen
- High gloss wood interior
- Storage cabinets
- Salon carpet/pad, flooring with teak wood flooring at entry way
- Sectional sofa - custom covered
- 2 Lounge chairs

- Pleated fabric shades
- Sunroof, retractable hydraulic
- Wet Bar includes refrigerator with icemaker
- Bar storage, cabinet with bottle and glass racks
- Coffee table
- Two rain gear lockers

Galley/Dinette

- Solé 23" LCD TV with DVD, Apple TV, Mac Mini
- Miele Microwave/ convention oven
- Miele Designer range hood
- Miele Stainless steel appliances
- Refrigerator with Icemaker
- Granite countertops
- Miele Cook-top recessed four - burner
- Coffee maker, Krups
- Storage cabinets, upper and lower
- Settee with storage
- Expandable custom dinette table with storage
- Glass serving area
- Lighting, indirect
- Wood plank floor
- White lacquer drawers
- Two barstools
- Stainless steel " Apron" Sink with single lever

Master Stateroom

- 32" Solé LCD TV with DVD / CD player and Apple TV
- Sonance Iport in wall docking system for Ipod map 350
- Sonance Iport video upgrade kit
- Walk around Lazzara- size king bed w/ innerspring mattress
- Glass desk port side
- Ottoman desk chair
- Two dressing bureaus port side w/ 6 soft close drawers each
- Two dressing bureaus starboard side w/ 6 soft close drawers each
- Veneered night stands, port & starboard w/ wood tops and drawers
- Upholstered loveseat starboard side
- Private access to head
- Carpet
- Majilite overhead panels w/ foam backing

- Fabric wall coverings, removable panels
- Two " Horizon" panoramic windows w/shades
- Window treatment
- Direct and Indirect lighting
- Decorative sconces

Master Head

- Sharp 15 AQUOS LCD TV behind the mirror
- Marble vanity top w/ two under mount sinks
- Brushed nickel fixtures
- Closet w/ mirrored doors
- Clothing bureau w/ drawers
- Medicine cabinet w/ beveled mirror
- Towel racks
- Infinity edge marble flooring
- Marble enclosed full size shower w/ seamless glass enclosure
- Headhunter marine toilet
- Shower panel system w/ multiple body sprays
- Exhaust fan
- Linen closet

Forward VIP Stateroom

- Toshiba 15" LCD TV with DVD and PlayStation 3
- Lazzara queen bed with innerspring mattress
- Hanging locker
- Chain locker bulkhead with access
- Storage cabinet w/ drawers and shelves
- 24V reading lights LED
- Lighting low voltage AC halogen
- Deck hatch/screen/blackout
- Carpet
- Storage under bed
- Chrome and brushed nickel fixtures

Forward VIP Head

- Infinity edge marble flooring
- Shower with glass enclosure
- Lighting low voltage AC halogen

- Power vent fan, 24 volt
- Headhunter marine toilet
- Storage & medicine cabinet
- Vanity with marble countertop and back splash

Port & VIP Staterooms

- Lazzara double size bed with innerspring mattress, can slide together to form a queen size bed.
- Glass window on inboard cabin wall / privacy glass feature
- Portholes
- Hanging locker with full length mirrored door
- Nightstand w/ drawers
- Storage drawers under bed
- Carpet
- Majilite overhead panels with foam backing
- Blinds over window
- "Horizon" panoramic windows
- Direct & Indirect Lighting
- Toshiba 15" LCD TV with DVD and PlayStation 3
- Skybox Satellite receiver

Port & Starboard VIP Head

- Headhunter marine toilet
- Power vent fan
- Glass towel shelf with rails
- Storage, medicine cabinet w/ frosted glass front
- Custom vanity with marble flooring
- Chrome and brushed nickel fixtures
- Marble shower w/ seamless glass enclosure

Aft Stateroom (Crew Quarters)

- Toshiba 15" LCD TV with DVD
- Access to engine room
- Access to main deck
- Upper/lower bunks with storage below lower bunk
- Carpet
- Low voltage AC halogen lighting
- Storage, drawers

Aft Head

- Headhunter marine toilet
- Shower and Sink

Laundry Center

- Miele stacked washer & dryer
- Linen closet

Interior Lighting

- Overhead LED lighting (low voltage DC)
- Emergency 24 volt DC lighting

Communication/Navigation

- One VHF Simrad RS - 87 VHF radio / fog horn/ hailer
- Telular cell phone GSM 850 / 1900 w/ 3db cell antenna
- AIS

Navigation

- Salon Helm Station
- New Vasari Marine Computer with Nobeltec navigation software in 2012
- Nobeltec Radar
- Nobeltec Depth sounder
- Fully instrumented helm console, including electronic engine controls
- One single custom electric helm chair, fully adjustable, leather (electric D/C) , One double seat companion chair adjustable manually fore and aft
- Autopilot: Simrad AP 26 with Wireless Remote
- Compass displays: Simrad IS 15
- 3 15" LCD displays
- Volvo Speed/ depth/ temp

Alarms/Monitors

- Lazzara 64 channel ISIS 500 vessel monitoring system including:
- Dynamic diagnostics

- 1 15" LCD monitor at helm, 1 19 " LCD monitor in engine room
- ECM output from engine monitor / alarm electronics
- Generator systems alarm/ monitoring
- Tank level readout and alarms
- Fire Zone alarm for engine room
- Bilge alarms and pump run indication
- Auto fire discharge alarm
- Eplex touch screen – Central control for all lights and mechanical equipment

Engine & Mechanical Equipment

4 x Volvo IPS 600 Systems

Nibral duo - prop

Air Conditioning System: Six zone 92,000 BTU air conditioning system with air handlers and thermostats for each zone; touch pad controls -Insulated copper piping supply and return lines - Individual head exhaust fans

Bilge System: 24 VDC automatic bilge pumps (1 aft, 1 fwd, 1 engine room) -24VDC high-water alarm (1 aft, 1 fwd, 1 engine room) -Two Emergency bilge pumps, engine driven

- Control & Instrument, Main Engines
- Volvo display all engines
- Station Transfer panels
- Shift & Throttle controls, electronic with engine sync
- Volvo joystick control for docking and slow speed maneuverability
- Volvo Electronic Steering
- Key Switch Start/stop
- Cockpit control Station: Joystick control Volvo
- Station transfer panels
- Start/stop panels
- Lazzara Engineered "Ultra Sound" engine room system
- Interior " Isolation Dampening" system
- Thermo barrier foil Engine Room:
- Epoxy coated engine room, White
- Flooring, metal diamond plate
- Volvo control panel for engines & drives
- Fresh water hose & spigot
- Aft Deck access
- Forward engine room egress to captain's quarters
- Powered ventilation system
- ISIS monitor in engine room

Generator

- Kohler 27.5 kw

Electrical Equipment

- KVH SAT 525 Trac phone system
- CCTV system with dome camera in engine room, output to helm monitor
- FLIR - Thermal night vision camera with output to helm monitor
- Four additional satellite TV receivers

Electrical Grounding

- Bonding system w/ large zinc hull plate
- IPS w/ separate drive and hull zincs

Exterior Lighting

- Overhead LED lights aft deck
- Navigations Lights: - Fwd streaming lights, Port/ Stbd side running lights, Stern running light, Anchor light
- Exterior LED deck lights
- Aft deck LED transom stairs
- Boat deck LED lighting
- Searchlight, Chrome

Shore Power

- Glendinning cablemaster @ 100 Amp/240V/60 cycle w/ 100 ft cord and wireless remote
- Isolation transformer, 240V/24 KVA/100 Amp
- ASea power converter for 50 and 60 Hz Shore power
- Batteries (AGM) Group 31
- 2 GPL 3100T for generator
- 8 GPL 3100 T/M for engines
- 2 GPL 40 L for house
- 2 battery charges (40 Amp Charles charges)
- Panel AC main selector -240 V
- Panel main distribution - AC / DC

Safety & Fire Protection

- Fire suppression system- automatic with engine shutdown, override and manual pull
- Carbon monoxide detectors in crew cabin and master head
- Exhaust System Underwater through drive units

Deck

Upgraded stainless steel 50 Kg anchor

Upgraded 10 mm anchor chain w/ storage in forepeak locker

Anchor Chute, stainless steel

Anchor washdown spigot with hose

Maxwell Windlass, chain w/ controls

Deck Hardware:

- Fwd sun pad speaker craft for two 5" speakers
- Air Horn
- Windshield wiper system 24 vdc / pantograph type with washer system
- Lazzara custom 16" bow, sprint and stern cleats, 316L steel rails on main deck
- Fwd hatch to bow cabin
- Acrylic panel w/ stainless steel LSX logo, fiber optic edge lit
- Logo, stainless steel
- Bulwark boarding doors port and stbd
- Teak aft deck and swim platform deck
- Aft Deck Transom/ Outfitting:
- Aft Deck LCD TV integrated behind salon door glass
- Flooring, teak
- Lighting, indirect
- Aft stateroom access hatch
- Teak steps, stbd access hatch for engine room
- Storage side panels -port
- Table, Corian in cockpit
- Speakers overhead
- Overhead cockpit lights
- Low level courtesy lights
- Aft deck bar w/ stools
- Ships bell
- Stainless steel baby gates w/ acrylic inserts
- Storage compartments

- LSX logo engraved on 1/2" abrasion resistant acrylic panel w/ stainless steel frame

Exclusions

- Owner's gear and personal items

Exclusions

Owner's personal belongings.

Disclaimer

The Company offers the details of this vessel or yacht in good faith but cannot guarantee or warrant the accuracy of this information nor warrant the condition of the vessel. A buyer should instruct his representatives, agents, or his surveyors, to investigate such details as the buyer desires validated. This vessel or yacht is offered subject to prior sale, price change, or withdrawal without notice.

PHOTOS

Salon



Salon



Salon



Salon



Salon



Salon



Salon



Salon Wetbar



Salon Wetbar



Salon Wetbar



Salon Glass Storage



Day Head



Galley/Dinette



Galley/Dinette



Galley



Galley



Galley



Galley Indirect Lighting



Galley Indirect Lighting



Master Stateroom



Master Stateroom



Master Stateroom



Master Stateroom



Master Stateroom



Master Stateroom



Master Stateroom



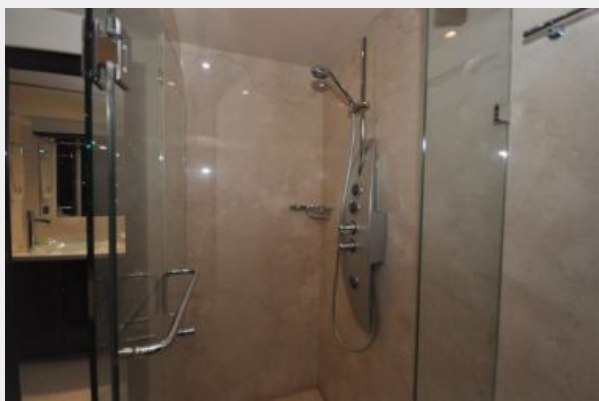
Master Head



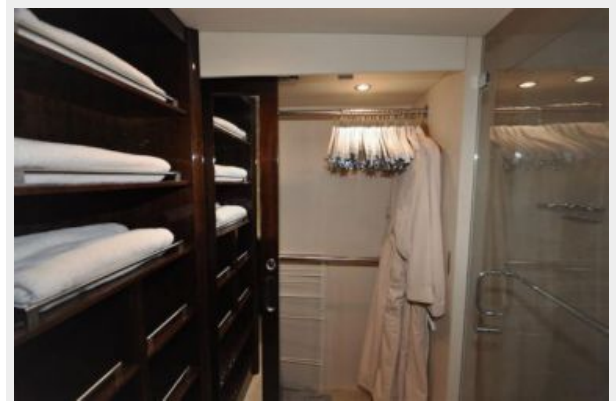
Master Head



Master Shower



Master Closet



Companion Way



Forward VIP Stateroom



Forward VIP Stateroom



Forward VIP Stateroom



Forward VIP Stateroom



Forward Head



Forward Head



Starboard VIP Stateroom



Starboard VIP Stateroom



Starboard Head



Starboard Head



Port VIP Stateroom



Port VIP Stateroom



Port Head



Washer/Dryer Combo



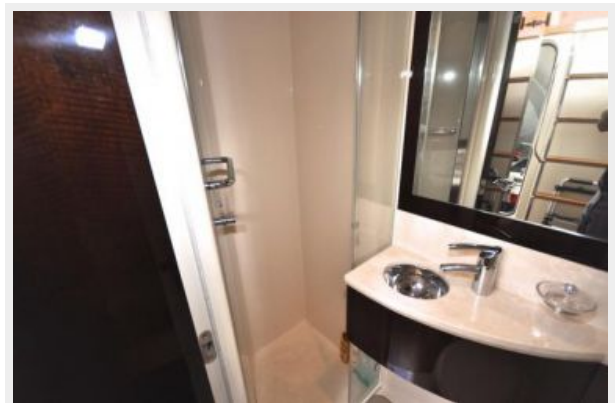
Crew Quarters



Crew Head



Crew Head



Helm



Helm



Helm



Helm



Helm



Helm



Helm



Helm



Equipment Room



Equipment Room



Equipment Room



Equipment Room



Engine Room



Engine Room



Engine Room



Engine Room



Engine Room



Aft Deck



Aft Deck



Aft Deck



Aft Deck



Aft Deck



Aft Deck



Aft Deck



Aft Deck



Aft Deck



Aft Deck



Aft Deck



Aft Sun Lounge



Aft Sun Lounge



Docking Station



Starboard Side



Portside



Portside



Portside Bow



Portside Bow



Bow



Bow Sun Pad



Bow Sun Pad



Bow Sun Pad



Bow Sun Pad



Bow Sun Pad



Ground Tackle



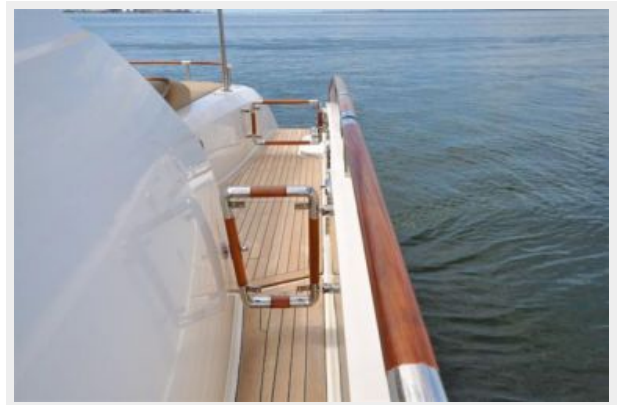
Antennas



Windshield Wipers



Gates



Gates



Gates



Aft Sunpad



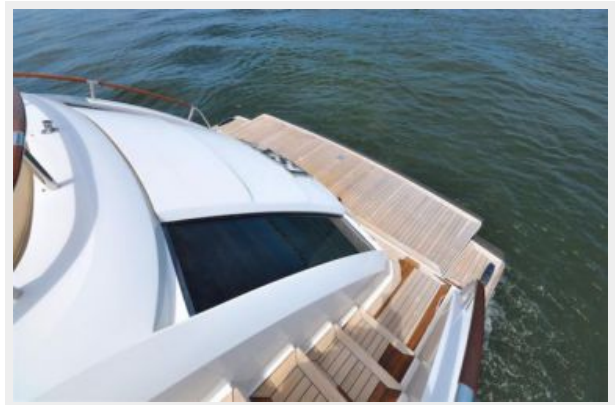
Cleats



Storage



Swim Platform



Swim Platform



Transom



Tender Storage



Tender Storage



Transom



Transom



Transom Profile



Profile



Profile



Profile



Profile



Profile



Profile



Profile



Profile



Profile



Profile



Profile



CONTACTS

Andrey Shestakov, leading yacht broker of the sales department of Shestakov Yacht Sales Inc. Shestakov Yacht Sales Inc., the official representative of the Miami/Fort Lauderdale FL headquarters.

Contact details

Email: andrey@shestakovyachtsales.com

Web: shestakovyachtsales.com/en/

Telephones

USA: +1(954)274-4435

Office hours

Monday – Saturday: **9:00 - 21:00** EDT

Sunday: **closed**

Address



Harbour Towne Marina, 850 NE 3rd St,
STE 213, Dania, FL 33004