

AMBER — PERSHING



Builder: PERSHING

Year Built: 2011

Model: Cruiser

Price: PRICE ON APPLICATION

Location: United States

LOA: 64' 0" (19.51m)

Beam: 16' 5" (5.00m)

Max Draft: 4' 4" (1.32m)

Cruise Speed: 40 Kts. (46 MPH)

Max Speed: 46 Kts. (53 MPH)

Our experienced yacht broker, Andrey Shestakov, will help you choose and buy a yacht that best suits your needs **AMBER — PERSHING** from our catalogue. Presently, at Shestakov Yacht Sales Inc., we have a wide variety of yachts available on our sale's list. We also work in close contact with all the big yacht manufacturers from all over the world.

If you would like to buy a yacht **AMBER — PERSHING** or would like help answering any questions concerning purchasing, selling or chartering a yacht, please call **+1(954)274-4435**

TABLE OF CONTENTS

TABLE OF CONTENTS	2
SPECIFICATIONS	5
Overview	5
Basic Information	5
Dimensions	5
Speed, Capacities and Weight	5
Accommodations	5
Hull and Deck Information	6
Engine Information	6
DETAILED INFORMATION	7
64' Pershing Luxury Yacht AMBER	7
Decks & Superstructure	7
Aft Deck	7
Engine Room	7
Electronics	8
Deck Equipment	8
Audio & Visual Equipment	8
Appliances	8
Salon / Helm	8
Galley	9
Under Foward Accommodations	9
Master Stateroom	9
Master Head	9
VIP Stateroom	9
VIP Head	10
Crew Quarters	10
Exclusions	10
Disclaimer	10

PHOTOS	11
Teak Walkway	11
64' Pershing AMBER	11
Starboard View	11
Aft Deck & Sunpad	11
Transom & Access to Garage	11
Aft Salon	11
Aft Salon	12
Helm Station	12
Salon	12
Salon	12
Salon	12
Stairway from Staterooms to Salon	12
Master Suite Entrance	13
Master Suite with Bay Window	13
Master Suite with Bay Window	13
Master Suite with Bay Window	13
Master En Suite Head & Shower	13
VIP Stateroom	13
VIP Stateroom	14
VIP Head	14
VIP Head	14
Guest Stateroom	14
Guest Stateroom	14
Galley	14
Galley	15
Crew Quarters	15
Engine Room	15
Engine Room	15

Profile	15
Aft Profile	15
Running	16
64' Pershing AMBER	16
GA Plans	16
CONTACTS	17
Contact details	17
Telephones	17
Office hours	17
Address	17

SPECIFICATIONS

Overview

64' Pershing Motor Yacht, AMBER's signature style is reflected at the dock or cruising at 40 knots! Enjoy comfort for 6 guests in 3 staterooms, as well as 1 crew cabin.

Basic Information

Category: Cruiser

Sub Category: Express

Model Year: 2011

Year Built: 2011

Country: United States

Dimensions

LOA: 64' 0" (19.51m)

Beam: 16' 5" (5.00m)

Max Draft: 4' 4" (1.32m)

Speed, Capacities and Weight

Cruise Speed: 40 Kts. (46 MPH)

Max Speed: 46 Kts. (53 MPH)

Water Capacity: 238 Gallons

Fuel Capacity: 952 Gallons

Accommodations

Total Cabins: 3

Sleeps: 6

Total Heads: 3

Crew Cabin: 1

Crew Heads: 1

Hull and Deck Information

Hull Material: Fiberglass

Engine Information

Engines: 2

Manufacturer: MAN

Engine Type: Inboard

Fuel Type: Diesel

DETAILED INFORMATION

64' Pershing Luxury Yacht AMBER

64' Pershing Luxury Yacht AMBER Equipment and Features Bottom Bow thruster Stern thruster Underwater lights Full bottom stripped and two coats antifouling painted 3/2015 Arneson drives serviced with two coats epoxy barrier coat 3/2015 In-water cleaning biweekly Yacht Controller Topsides/Swim Platform Integral swim platform with teak overlay Hydraulic swim ladder, centerline 100-amp Cablemaster, port Dockside water inlet, starboard Pop-up cleat, port and starboard Showerhead on hose, starboard Dockside phone/CATV inlet, port Passerelle, port Fuel fill cap, starboard Transom garage with: Two D.C. lights Freshwater washdown Completed December 2016 1000 hr. MAN complete service, 670 hrs. on engines MAN control board replaced Expansion tanks removed and serviced Arneson drive cylinders removed and rebuilt Drives received coat of epoxy primer followed with coat of Tri Lux bottom paint Complete sanding of hull to remove all bottom paint. Two coats Primocon followed with International CSC black bottom paint. All zincs replaced All external intake strainers cleaned and inspected New covers for all cushions and pads Fluids previously changed using MAN spec'd products

Decks & Superstructure

Fiberglass deck with teak overlay on side decks Stainless steel rails and stanchions with stainless steel safety line Stainless steel anchor roller assembly 32-kg Trefoil galvanized anchor with approximately 250' of chain Lofrans anchor windlass with capstan and wildcat Access hatch to chain locker, centerline at bow Anchor washdown in chain locker Sun lounge with pads, centerline on trunk cabin Two windshield wipers, new 4/15 Bow cleat, port and starboard Spring cleat, port and starboard Water fill, starboard Hardtop/radar arch with: VHF antennas AM/FM antenna Remote operated searchlight Two GPS antennas Satellite television antenna

Aft Deck

Fiberglass deck with teak overlay L-shaped bench seat with cushions and hi/low table Access hatch to engine room Courtesy lights in overhang Sliding door to salon Two stereo speakers Control pad to garage hatch, passerelle, swim ladder Cut-off switches to ship service and engine start

Engine Room

Entrance via aft deck hatch with entry ladder Kohler 23-kw generator with 550 hours, fiberglass muffler Two Arneson drive hydraulic trim units, services 12/16 24-volt freshwater pump with accumulator tank 24-volt bilge pump to five-compartment manifold 24-volt gray water pump 24-volt anchor washdown/fire pump 24-volt black water pump Electric/hydraulic pack for passerelle

Electric/hydraulic pack for accessory hydraulics Hydraulic steering system to Arneson drives with reservoir Fluorescent light fixtures with safety lens Two electric/automatic bilge pumps Two high water alarm switches 60.6-lb HFC-227 cylinder, tag current 110-volt air compressor 12-volt battery to generator, aft Two 12-volt batteries to each engine [forward of each engine] new 4/15 Four 12-volt batteries for 24-volt house service, starboard outboard, new 4/15 Zahnradfabrik Friedrichshafen AG electronic clutch and throttle controls Two Mastervolt inverters Mastervolt 24/75 battery charger Mastervolt 24/50 battery charger Engine raw water diverter valves for emergency bilge pumping capabilities, port and starboard Condaria chilled water air conditioning system with: Three compressors Raw water pump Chilled water pump Digital controller Fiberglass fuel tank, forward with sight tube 100-amp Cablemaster electric reel and collector drum Shore power transformer Battery cut-off switch to ship's service Battery cutoff switch to generator

Electronics

Furuno NavNet radar Furuno VHF Furuno NavNet 3-D GPS Furuno Depthsounder Furuno Autopilot White Star magnetic compass Remote operated searchlight Yacht Controller

Deck Equipment

Ground tackle: 32-kg Trefoil anchor with approximately 250' of chain Windlass: Lofrans Cleats: Stainless steel Safety rails: Stainless steel

Audio & Visual Equipment

Sat TV Receivers: Direct TV Sharp Televisions MBQuart Stereos Bose Home Entertainment Theater

Appliances

Bosch refrigerator Bosch 4-burner stovetop Miele dishwasher Ariston waterheater Miele clothes washer/dryer Salon icemaker

Salon / Helm

Laminate sole Recessed overhead lights Overhead retractable sun roof, forward Bose surround stereo speakers L-Shaped benchseating, starboard Sharp flat panel television on electronic platform Ice maker Electrically powered window, port and starboard Two helm seats Helm console, forward starboard White Star compass Steering wheel Zahnradfabrik Friedrichshafen AG electronic clutch/throttle controls MAN engine display panel, port and starboard Furuno FI-50 sounder/knotlog Furuno VHF radio Rudder angle indicator Furuno autopilot Furuno NavNet 3-D

unit Searchlight control Fireboy engine shutdown override panel Switches to lights, pumps, and windshield wipers Engine start and stop, port and starboard Jog controls to bow and stern thruster, flaps and trim tabs Compact refrigerator Sony BluRay DVD player DirecTV satellite television receiver Bose stereo Electric blinds, port, starboard, and aft Main A.C./D.C. electrical distribution

Galley

Laminate plank sole Portholes Recessed lights Breakers for galley services Blower over stovetop Stainless steel sink with cover Bosch 4-burner cooktop Microwave oven Miele dishwasher Overhead lockers Bosch refrigerator and freezer Marine Air air conditioning control

Under Foward Accommodations

Fiberglass black water tank Fiberglass gray water tank Ariston Water heater Hold lights Air conditioning condensate sump tank with pump Freshwater supply manifolds Chilled water supply manifolds Bow thruster

Master Stateroom

Carpeted sole Vinyl overhead Recessed overhead lights Porthole, port and starboard Nightstands, port and starboard, each with reading lamp Double island berth Sharp flat panel television Hanging locker with overhead light and Kidde 10BC dry chemical fire extinguisher, tag current Marine Air air conditioning controls Orion Alert/Locate marine signal kit 24" life ring Two type I life jackets First aid kit 8" ship's bell Handheld horn Dead lights port and starboard Electric blinds, port and starboard Bose stereo DirecTV sat to receiver

Master Head

Entrance via master stateroom, port aft Laminate sole Recessed overhead lights Tecma head GFCI outlet Porthole with miniblinds Vanity with sink, two hot/cold water faucets, storage Mirror above vanity Stall shower with overhead light, shower head on hose and adjustable wall mount, hot/cold water faucet, glass door, overhead shower head Sump tank with pump undersole

VIP Stateroom

Carpeted sole Vinyl overhead Recessed overhead lights Two portholes with miniblinds Two reading lights at head of berth Hanging locker with light Single berth Sharp flat panel television Marine Air air conditioning controls MB Quart stereo

VIP Head

Entrance via mid stateroom and forward companionway Laminate sole Recessed overhead lights Vanity with sink, hot/cold water faucet, and storage Mirrored panel, on forward bulkhead Tecma head Stall shower with, overhead light, showerhead on hose with adjustable wall mount, hot/cold

Crew Quarters

Crew Stateroom Entrance via ladder from aft deck Carpeted sole Vinyl overhead Recessed overhead lights Single berth Miele T8003 clothes dryer Miele W3003 clothes washer Alpine stereo Four type I life jackets **Crew Head** Laminate sole Molded sink with faucet which serves as shower head [on hose] Tecma toilet Porthole Composite overhead with recessed lights

Exclusions

Owner's personal belongings.

Disclaimer

The Company offers the details of this vessel or yacht in good faith but cannot guarantee or warrant the accuracy of this information nor warrant the condition of the vessel. A buyer should instruct his representatives, agents, or his surveyors, to investigate such details as the buyer desires validated. This vessel or yacht is offered subject to prior sale, price change, or withdrawal without notice.

PHOTOS

64' Pershing AMBER



Teak Walkway



Starboard View



Aft Deck & Sunpad



Transom & Access to Garage



Aft Salon



Aft Salon



Helm Station



Salon



Salon



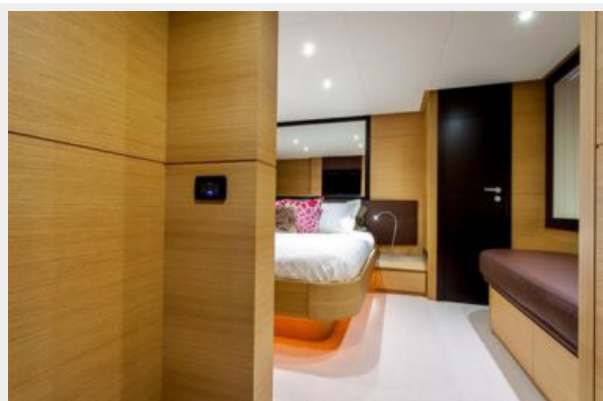
Salon



Stairway from Staterooms to Salon



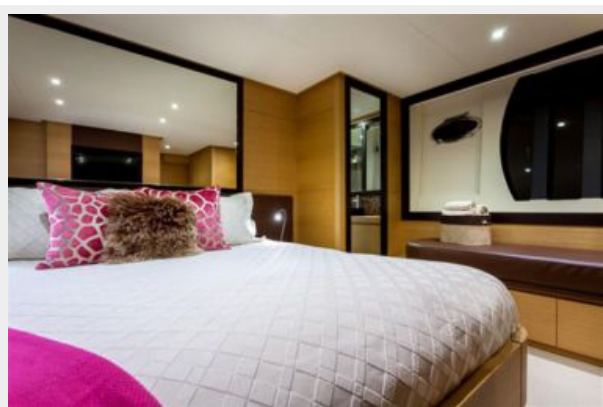
Master Suite Entrance



Master Suite with Bay Window



Master Suite with Bay Window



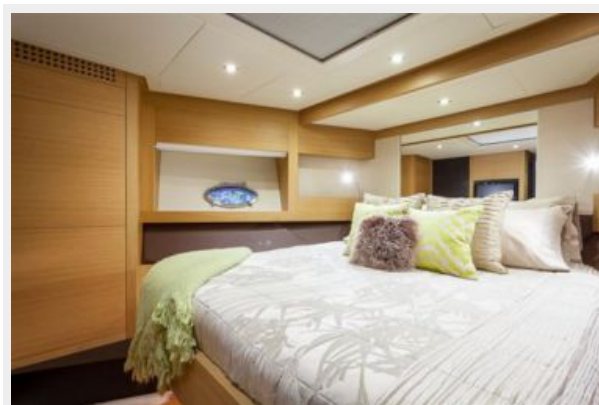
Master Suite with Bay Window



Master En Suite Head & Shower



VIP Stateroom



VIP Stateroom



VIP Head



VIP Head



Guest Stateroom



Guest Stateroom



Galley



Galley



Crew Quarters



Engine Room



Engine Room



Profile



Aft Profile



Running



64' Pershing AMBER



GA Plans



CONTACTS

Andrey Shestakov, leading yacht broker of the sales department of Shestakov Yacht Sales Inc. Shestakov Yacht Sales Inc., the official representative of the Miami/Fort Lauderdale FL headquarters.

Contact details

Email:
andrey@shestakovyachtsales.com

Web: shestakovyachtsales.com/en/

Telephones

USA: **+1(954)274-4435**

Office hours

Monday – Saturday: **9:00 - 21:00 EDT**

Sunday: **closed**

Address



Harbour Towne Marina, 850 NE 3rd St,
STE 213, Dania, FL 33004