

SD126 AMERICAS EDITION — SANLORENZO



Builder: SANLORENZO

Year Built: 2016

Model: Motor Yacht

Price: PRICE ON APPLICATION

Location: United States

LOA: 126' 0" (38.40m)

Beam: 26' 3" (8.00m)

Min Draft: 7' 2" (2.18m)

Cruise Speed: 11 Kts. (13 MPH)

Max Speed: 17 Kts. (20 MPH)

Our experienced yacht broker, Andrey Shestakov, will help you choose and buy a yacht that best suits your needs **SD126 Americas Edition — SANLORENZO** from our catalogue. Presently, at **Shestakov Yacht Sales Inc.**, we have a wide variety of yachts available on our sale's list. We also work in close contact with all the big yacht manufacturers from all over the world.

If you would like to buy a yacht **SD126 Americas Edition — SANLORENZO** or would like help answering any questions concerning purchasing, selling or chartering a yacht, please call **+1(954)274-4435**

TABLE OF CONTENTS

TABLE OF CONTENTS	2
SPECIFICATIONS	4
Overview	4
Basic Information	4
Dimensions	4
Speed, Capacities and Weight	4
Accommodations	5
Hull and Deck Information	5
Engine Information	5
DETAILED INFORMATION	6
DESCRIPTION	6
AMERICAS EDITION PACKAGE	6
OPTIONS & UPGRADES	7
Exclusions	8
Disclaimer	8
PHOTOS	9
EVENING PROFILE	9
BOW JACUZZI	9
FLYBRIDGE AFT	9
FLYBRIDGE JACUZZI	9
UPPER DECK AFT	9
UPPER DECK DINING	9
MAIN SALON	10
MAIN DECK DINING	10
FLOATING STAIRCASE	10
GALLEY	10
SKYLounge	10
SKYLounge	10

MASTER DORNBRACHT SPA SHOWER SYSTEM	11
MASTER STATEROOM	11
MASTER STUDY	11
VIP STATEROOM 1	11
VIP HEAD 1	11
VIP STATEROOM 1	11
VIP STATEROOM 2	12
VIP STATEROOM 2	12
VIP HEAD 2	12
GUEST STATEROOM 1	12
GUEST HEAD 1	12
GUEST STATEROOM 2	12
GUEST HEAD 2	13
PILOTHOUSE	13
CONTACTS	14
Contact details	14
Telephones	14
Office hours	14
Address	14

SPECIFICATIONS

Overview

The Sanlorenzo SD126 is a semi-displacement tri-deck motoryacht. Built in Viareggio, Italy for the Americas market, she has full "Americas Edition" specifications. This yacht stands apart with some head-turning upgrades and options. These elements include a terrace off the main salon, hull-side gull wing doors off the master stateroom, a new bow seating lounge area, bow and flybridge jacuzzis, enlarged hull-side windows and hydraulic swim platform. She is also equipped with Zero Speed stabilizers. The yacht can accommodate up to 12 guests. The on-deck master suite features his and hers heads and a separate office/study. On the lower deck are two VIP staterooms with ensuite heads and two twin staterooms, both with Pullman berths and ensuite heads. Captain's suite for 2 is on the upper deck, with accommodations for 5 more crew on the lower deck.

Basic Information

Category: Motor Yacht

Model Year: 2016

Year Built: 2016

Country: United States

Fly Bridge: Yes

Cockpit: Yes

Dimensions

LOA: 126' 0" (38.40m)

LWL: 104' 1" (31.72m)

Beam: 26' 3" (8.00m)

Min Draft: 7' 2" (2.18m)

Speed, Capacities and Weight

Cruise Speed: 11 Kts. (13 MPH)

Cruise Speed Range: 2900

Max Speed: 17 Kts. (20 MPH)

Displacement: 560000 Pounds

Water Capacity: 1321 Gallons

Holding Tank: 792 Gallons

Fuel Capacity: 9034 Gallons

Accommodations

Total Cabins: 5

Sleeps: 12

Total Heads: 7

Captain Cabin: True

Crew Cabin: 4

Crew Berths: 7

Crew Sleeps: 7

Crew Heads: 4

Hull and Deck Information

Hull Material: GRP

Deck Material: Teak

Hull Configuration: Semi-Displacement

Hull Designer: Sanlorenzo

Exterior Designer: Francesco Paszkowski

Interior Designer: Marty Lowe

Engine Information

Engines: 2

Manufacturer: Caterpillar

Model: C32 ACERT

Engine Type: Inboard

Fuel Type: Diesel

DETAILED INFORMATION

DESCRIPTION

The Sanlorenzo SD126 is a semi-displacement tri-deck motoryacht. Built in Viareggio, Italy for the Americas market, she has full "Americas Edition" specifications. This yacht stands apart with some head-turning upgrades and options. These elements include a terrace off the main salon, hull-side gull wing doors off the master stateroom, a new bow seating lounge area, bow and flybridge jacuzzis, enlarged hull-side windows and hydraulic swim platform. She is also equipped with Zero Speed stabilizers. The yacht can accommodate up to 12 guests. The on-deck master suite features his and hers heads and a separate office/study. On the lower deck are two VIP staterooms with ensuite heads and two twin staterooms, both with Pullman berths and ensuite heads. Captain's suite for 2 is on the upper deck, with accommodations for 5 more crew on the lower deck.

AMERICAS EDITION PACKAGE

ELECTRICAL SYSTEM Electrical system: 127/220V Shore power connections: Two (2) 220V AC 100A Three-phase 60Hz Generators: Two (2) 80kW Battery charger: 12V/25A for generator batteries Aft Glendenning Cablemasters: Two (2) CM8 GFCI distributed in technical room, bathroom, galley and exterior utilizing waterproof boxes in engine room and lazarette Isolation transformers (upgraded below) Double gang 110V 60Hz USA/EU sockets One (1) 24V master switch dedicated to navigation electronics at pilothouse **ENGINE ROOM EQUIPMENT** Double Racor filters for generators Ball valve thru-hull fittings (engine cooling exhausts remain as gate valves) Engine oil change system Additional air conditioning raw water pump installed in by-pass Water tank purification system with active carbons Watermaker: Sea Recovery 1800 gallons/day Installation of FM200 fire system equipment (USCG approved) **AIR CONDITIONING SYSTEM** Tropicalized air conditioning system: 480,000 BTU Air conditioning condensation draining overboard **COMPLEMENTS FOR THE EXTERIOR** One (1) Flybridge freshwater connection/tap One (1) Aft freshwater connection/tap Spotlight Lateral gangway: Marquipt Sea Stair 9 steps Rub rail with stainless steel trim Prop speed on shafts, propeller, and hydraulic swim platform mechanism, intruder, shafts, brackets, bow and stern thruster, rudders and trim tabs **APPLIANCES** Washing machine: Miele Dryer: Miele Cooktop: Miele Microwave: Sharp (upgraded below to Miele speed oven) Oven: Miele Dishwasher: Miele Upright refrigerator/freezer: Two (2) Sub-Zero series with drawers and overlay panels (one with ice maker) Wine cooler: Sub-Zero 24" Ventilation fan: Miele Insinkerator sink/food waste disposal Salon bar refrigerator: Sub-Zero 24" Salon bar ice maker: Scotsman (upgraded below) Upper deck bar refrigerator: Sub-Zero 24" Upper deck bar ice maker: Scotsman (upgraded below) Flybridge refrigerator: Frigonautica Flybridge ice maker: U-Line Teppan Yaki: Miele **ADDITIONAL ITEMS** VHF with US channels Portable fire extinguishers, life rafts, lifejackets, rings and emergency equipment Hard latch system for the interior: Slides or positive catches on all galley/bar appliances and other drawer units Refrigerator inverter system Deletion of bidets **CERTIFICATES & DOCUMENTATION** HIN

plate Hauling diagrams

OPTIONS & UPGRADES

ELECTRICAL SYSTEM Frequency converter: ASEA (220V/110V - 50Hz/60Hz) with seamless transfer, including deletion of isolation transformers **ENGINE ROOM EQUIPMENT** Alfa Laval fuel cleaning system Hamann HL-Cont black/grey water treatment system Fuel fill system with manual pump for diesel tender **AIR CONDITIONING SYSTEM** Ozone treatment for air conditioning ventilation **AUDIO VISUAL EQUIPMENT** PLATINUM Audio Visual package **NAVIGATION ELECTRONICS** FLIR thermal camera for night vision/low light Two (2) additional 19" navigation monitors in pilothouse, for a total of five (5) monitors Additional Furuno radar and chart plotter with 4kW open array antenna **ALARMS & SECURITY** CCTV IP system: Two fixed cameras on the cockpit, two fixed cameras in engine room and one pan/tilt camera. Includes one (1) monitor in pilothouse, DVR, and additional monitoring on TVs in crew mess and captain's cabin. Additional 12" full-function touch screen ships systems monitor in crew mess **SATELLITE & COMMUNICATION SYSTEMS** SAT TV: KVH TracVision HD11 Empty radome for KVH HD11, including cables and reinforced base mount GSM system with antenna and Telular Wi-Fi modem: Voice, data and fax with hot spot antenna and antenna selection keyboard PABX system: Telephone switchboard with eleven (11) cordless terminals **COMPLEMENTS FOR THE EXTERIOR** Hard Top Bow area awning: Two-piece sail cover system with four removable stanchions Jacuzzi pool in bow area Water heater for bow Jacuzzi (6kW) Indirect LED recessed lighting around the Jacuzzi, furniture and bow sunpad Teak planks surrounding the Jacuzzi Sundeck Boffi bar unit with sliding top and storage Flybridge bow lounge area with custom U-shape seating design in teak and Paola Lenti furniture Aft flybridge awning: Three-piece sail cover system with three removable aft stanchions Water heater for flybridge Jacuzzi (6kW) Recessed LED lighting for flybridge Jacuzzi Flybridge Jacuzzi bar top overlay with three (3) bar stools Flybridge Jacuzzi glass side panel and box top cover Stainless steel column shower on the flybridge Teak flybridge deck Upper deck sun awning: One-piece sail cover system with two removable stanchions Upper deck lounge area with custom U-shaped seating design in teak on with Paola Lenti furniture Custom teak cabinet on the upper deck to house the Kenyon electric BBQ and provide additional storage Two (2) Paola Lenti "Smile" sofas on the aft deck Sixteen (16) Ocean LED underwater lights **COMPLEMENTS FOR THE INTERIOR** Salon terrace/balcony with lateral opening system Main deck electric doors upgraded to open with a ceiling button Electric opening system for six-panel glass door on the upper deck Floating interior staircase from the main deck to upper deck Two (2) gull-wing hull side doors in master stateroom Four (4) electric black-out shades, in addition to standard drapery curtains: One for each lower deck stateroom (black-out shades are standard in master stateroom) Three (3) berths hinging up with pistons (for additional storage): One for master berth and both VIP berths Three (3) Pullman berths: One in each guest stateroom and in captain's cabin Stateroom night stands include mobile device storage drawers incorporated with USB plugs Indirect LED lighting throughout Five (5) overhead rain showers: One for master shower and each VIP/guest shower Master spa shower experience for two: Steam showers and a Dornbracht horizontal/reclining shower system that combines six water

bars above a reclining space. Three pre-programmed choreography selections for balancing, energizing or de-stressing effects. Three (3) additional safes: One in each VIP stateroom and in captain's cabin Two (2) sets of custom Italian embroidered bed and bath linens. Dishware and cutlery for twelve (12) on the main deck, and an additional twelve (12) for the upper deck. Bar glassware at the main and upper deck bars. Upgraded Interior Décor: Light matte stained Fiddleback Maple bulkheads interspersed with gloss lacquer panels. Gloss lacquer, leather and reflective ceiling combinations throughout. Random planked, grey stained wood flooring throughout. Leather panel trim on bulkheads staircase areas, various companionways and bulkheads in VIP staterooms. Stacked marble main staircase wall and additional marble appointments in the heads. Grey stained Fiddleback Maple and high gloss lacquer in staterooms with topstitched leather panels framed in matte stainless steel. CEA stainless steel taps and plumbing fixtures. Leather on all bed frames. Upgraded interior furnishings throughout. Luxe carpet on the main deck and upper deck salons. Decorative, hand-loomed ombre toned area rugs for the main and upper deck salons. Exquisitely designed furniture from Minotti, Flexform, Molteni and FLOS used throughout the main deck and upper deck. Main salon features commissioned full-panel artwork and colorful hand blocked IKAT decorative throw pillows. Crystal tables in the upper deck. Decorative forward door in the upper deck salon. Skylounge features details from reclaimed mooring posts from the Venetian waterways and commissioned art panels. **APPLIANCES** Additional Miele washing machine Additional Miele dryer Miele ironing machine Miele speed oven (standard Sharp microwave relocated to crew mess) Broan Elite trash compactor Sub-Zero ice maker drawers in salon bar, in lieu of standard Scotsman Sub-Zero ice maker drawers in upper deck bar, in lieu of standard Scotsman Miele dishwasher in upper deck pantry Insinkerator sink/food waste disposal in upper deck pantry **KENYON** Texan electric BBQ grill for upper deck, in lieu of standard Miele Additional Miele undercounter fridge in crew mess Liebherr freezer in crew mess **CERTIFICATES & DOCUMENTATION** Rina statement of compliance with the "large commercial yacht code MCA LY2" (large commercial vessel unrestricted navigation)

Exclusions

Owner's personal belongings.

Disclaimer

The Company offers the details of this vessel or yacht in good faith but cannot guarantee or warrant the accuracy of this information nor warrant the condition of the vessel. A buyer should instruct his representatives, agents, or his surveyors, to investigate such details as the buyer desires validated. This vessel or yacht is offered subject to prior sale, price change, or withdrawal without notice.

PHOTOS

EVENING PROFILE



BOW JACUZZI



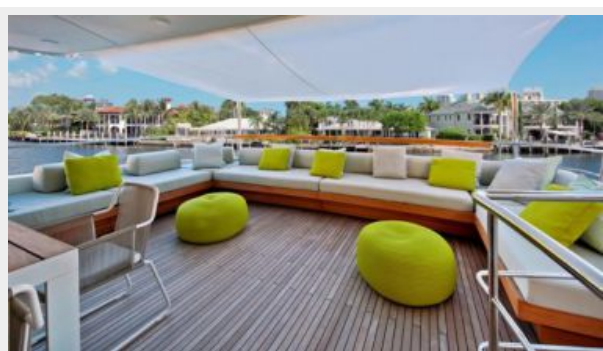
FLYBRIDGE AFT



FLYBRIDGE JACUZZI



UPPER DECK AFT



UPPER DECK DINING



MAIN SALON



MAIN DECK DINING



GALLEY



FLOATING STAIRCASE



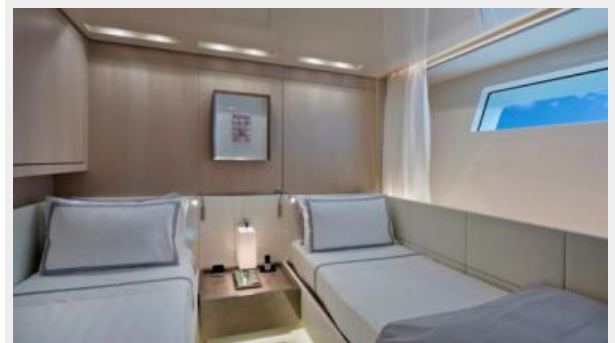
SKYLOUNGE



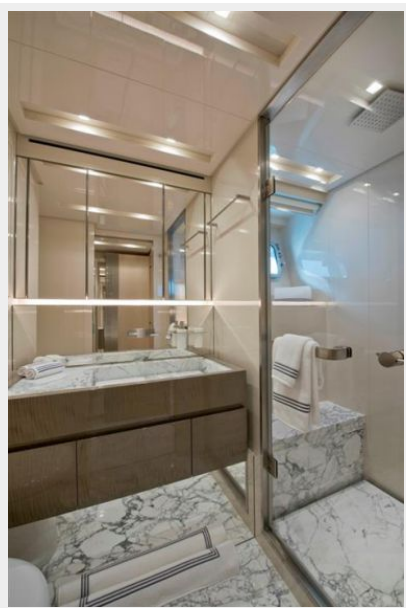
SKYLOUNGE



MASTER STATEROOM**MASTER DORNBRACHT SPA SHOWER SYSTEM****MASTER STUDY****VIP STATEROOM 1****VIP STATEROOM 1****VIP HEAD 1**

VIP STATEROOM 2**VIP STATEROOM 2****VIP HEAD 2****GUEST STATEROOM 1****GUEST HEAD 1****GUEST STATEROOM 2**

GUEST HEAD 2



PILOTHOUSE



CONTACTS

Andrey Shestakov, leading yacht broker of the sales department of Shestakov Yacht Sales Inc. Shestakov Yacht Sales Inc., the official representative of the Miami/Fort Lauderdale FL headquarters.

Contact details

Email: **andrey@shestakovyachtsales.com**

Web: shestakovyachtsales.com/en/

Telephones

USA: **+1(954)274-4435**

Office hours

Monday – Saturday: **9:00 - 21:00 EDT**

Sunday: **closed**

Address



Harbour Towne Marina, 850 NE 3rd St,
STE 213, Dania, FL 33004