

KAY SERA SERA — SEA RAY



Builder: [SEA RAY](#)

Year Built: 2008

Model: Motor Yacht

Price: PRICE ON APPLICATION

Location: United States

LOA: 60' 0" (18.29m)

Beam: 16' 9" (5.11m)

Max Draft: 4' 9" (1.45m)

Our experienced yacht broker, Andrey Shestakov, will help you choose and buy a yacht that best suits your needs Kay Sera Sera — SEA RAY from our catalogue. Presently, at Shestakov Yacht Sales Inc., we have a wide variety of yachts available on our sale's list. We also work in close contact with all the big yacht manufacturers from all over the world.

If you would like to buy a yacht Kay Sera Sera — SEA RAY or would like help answering any questions concerning purchasing, selling or chartering a yacht, please call **+1(954)274-4435**

TABLE OF CONTENTS

TABLE OF CONTENTS	2
SPECIFICATIONS	7
Basic Information	7
Dimensions	7
Speed, Capacities and Weight	7
Hull and Deck Information	7
Engine Information	7
DETAILED INFORMATION	8
Features	8
Hull and Deck	8
Cockpit	9
Upper salon	10
Helm	11
Electronics	11
Saloon	11
Galley	12
Cabins	12
Master Stateroom	13
Master Head	13
VIP Stateroom	14
VIP / Day Head	14
Guest Stateroom	14
Engine Room	14
Running Gear	15
Electrical systems	15
Water and Waste System	16
Exclusions	16
Disclaimer	16

PHOTOS	18
Stainless Steel Anchor	18
Bow	18
Bow Sunpad Area	18
Bow II	18
Deckhouse	18
Aft	18
Shiny Port Side	19
Aft Cockpit	19
Shiny Starboard Side	19
Extra Large Winshield	19
6 Foot Open Array HD Radar	20
Swim Platform	20
Aft Bench Cover	20
Cockpit Table	20
Cockpit Grill and Fridge	20
Cockpit Wet Bar and Icemaker	20
Grill and Fridge	21
Icemaker	21
Aft Cockpit	21
Aft Bench Seat	21
Salon Doors	21
Salon Entry	21
Salon to Port	22
Salon to Starboard	22
Salon to Starboard II	22
Salon to Port II	22
Salon Fridge	22
Salon Entertainment Center	22

Hide Away Salon TV	23
Helm Seats	23
Dash	23
Helm w Garmin 8215s	23
Dash II	23
Dash III	23
Switch Panel	24
Remote Generator Panel	24
Garmin 8215s	24
Saloon Entry	24
Saloon	24
Saloon to Port	24
Saloon II	25
Galley	25
Saloon TV	25
Galley II	25
Saloon Sofa	25
Saloon Looking Forward	25
Electical Panel	26
3rd Stateroom	26
Galley Sub Zeros	26
Sub Zeros Open	26
Hallway Looking Forward	27
Convection Microwave	27
VIP to Starboard	27
VIP to Port	27
VIP Stateroom	28
VIP to Port II	28
VIP Closet	28

VIP Head	28
Hallway into Master Stateroom	29
Washer and Dryer	29
Master Bed	29
Master to Port	29
Master Water Closet	30
Master to Starboard	30
Mster Head	30
Master Shower	30
Large Windoes in Master	31
Large Windows in Master II	31
Saloon Entertainment	31
Manufacturer Provided Image	31
Clean Bilge	32
Spare Props	32
Bow Thruster	32
Engine Room Hatch	32
Engine Room Entry	33
Engine Room to Port	33
Portside Cruisair AC Units	33
To Port Aft	33
Twin Glenndinings	33
New AGM Batteries	33
Engine Room to Starboard	34
Starboard Side AC Units	34
Engine Room to Starboard Forward	34
Engine Strainers	34
Generator Quiet Box	34
Clean Generator	34

Port MAN 1100	35
Starboard MAN 1100	35
Generator II	35
New LED Underwater Lights	35
All Chain	35
Aft Lazarette	35
Aft Lazarette II	36
CONTACTS	37
Contact details	37
Telephones	37
Office hours	37
Address	37

SPECIFICATIONS

Basic Information

Category: Motor Yacht

Model Year: 2008

Year Built: 2008

Country: United States

Dimensions

LOA: 60' 0" (18.29m)

Beam: 16' 9" (5.11m)

Max Draft: 4' 9" (1.45m)

Speed, Capacities and Weight

Displacement: 60200 Pounds

Water Capacity: 200 Gallons

Fuel Capacity: 900 Gallons

Hull and Deck Information

Hull Material: Fiberglass

Engine Information

Engines: 2

Manufacturer: MAN

Model: QSM 1100

Engine Type: Inboard

Fuel Type: Diesel

DETAILED INFORMATION

Features

This 60 Sundancer is a very fine example of Sea Ray's flagship Express Yacht. Sixty feet long with almost 17 foot beam. Three stateroom, two head layout, she boasts elegance and room throughout. New Garmin 8215's at the helm with new Garmin HD Radar with 6' Open Array. The list of updates and upgrades continues with new LED Underwater Lights, fresh bottom paint, new hot water heater, Yacht Controller, New TV in Salon, Spare Props.

- New Garmin 8215 Chartplotters with HD Radar
- Yacht Controller - wireless remote engine and thruster control
- Spare Propellers
- Climate-controlled cockpit sunroom
- Two, large, independently actuated sunroofs
- Versatile helm seating and companion seating
- Cockpit grill
- Full-beam master stateroom aft with elongated windows port and starboard
- Standard three staterooms
- New LED Underwater Lights
- Elegant styling
- Standard bow and stern thrusters
- Standard hydraulic lift swim platform

Hull and Deck

Kay Sera Sera's decks and hull are still shiny having been maintained lovingly and carefully. Clean, rust-free stainless topside. A large reclining lounge on the foredeck provides time to enjoy the sun or relax at night to watch the stars.

- Fresh Bottom Paint
- Bow Rail, 316 Stainless Steel w/ Welded Stanchions, Intermediate Rails & Life Lines
- Cleats, Custom Sea Ray ® Thru-Bolted Bollard Style - Stainless Steel (8)
- Cleats, Custom Sea Ray ® Thru-Bolted Stainless Steel (2 - Swim Platform)
- Deck Fill Plates, Stainless Steel
- Deck Rails, 316 Stainless Steel
- Gel Coat, Arctic White
- Graphics, Striping
- Handrails, 316 Stainless Steel
- Hatch, Deck Vent - Translucent w/Locks & Sky Screen Cover (Trapezoid)
- Hull Windows, Stainless Steel (12 Fixed)
- Lights, Navigation
- Portlights, Stainless Steel (2 Opening & 4 Fixed)

- Resin, High-Performance Vinylester
- Rub Rail, PVC w/ Stainless-Steel Insert
- Skylights, Flush-Mount w/Retractable Sunshades (2) - (1 - Salon, 1 - Galley)
- Storage, Transom Wall (For Fenders & Gear)
- Stringer System, Fiberglass Grid System
- Sun Pad, Forward Deck w/Adjustable Backrests, Cover & Built-In Drink Holders
- Swim Platform, Hydraulic Marine Lift w/Remote & Manual Pump, Stainless-Steel Three-Step Swim Ladder & Integral Grab Handle
- Thru-Hull Fittings, Stainless Steel
- Vent System, Engine Room - Integral
- Windshield, Tempered/Tinted Curved Glass (Bonded-In) w/Electric Front Vents & Opening Side Windows
- Windshield Defroster
- Windshield Washer System
- Windshield Wipers, 24V

- Aft Curtain (w/o Sides)
- Windshield Shades

- Anchor, Stainless Steel
- Anchor Chute, Stainless Steel
- Anchor Chain Storage w/Gas-Assisted Hatches
- Anchor, Washdown Spigot w/Hose
- Windlass, Chain w/Foot Switches

Cockpit

The large cockpit on *Kay Sera Sera's* provides great entertainment area outside with refrigerator, icemaker, grill, sink and even a built-in liquor dispenser. Seating for six at the large table on stainless steel pedestals.

- Beverage Holders, (4)
- Carpet Liner, Snap In
- Doors, Transom w/Stainless Steel Frame & Acrylic Insert (Port & Starboard)
- Floor Liner, Self-Bailing Fiberglass w/Gas-Assisted Engine Room Service Hatch
- Grill, Built-In w/Solid-Surface Lid & Countertop (240V) - Starboard
- Handrails, 316 Stainless Steel
- Icemaker, 120V (Port)
- Lighting, 24V Indirect w/Multiple-Way Switching Capacity
- Outlet, 120V GFI Protected
- Refrigerator, 120V - Starboard
- Seating, Aft Bench w/Fiberglass
- Storage Base
- Seating, Teak Folding Chairs (3) - Cockpit

- Speakers, Bose ® Exterior (4) w/SA-3 Amplifier
- Steps, Boarding (Molded-In)
- Steps, Molded Deck Access (From Transom)
- Storage, Side Panels - Port & Starboard
- Wet Bar w/Sink, Faucet, Solid-Surface Countertop & Stainless-Steel Handrail - Port

Upper salon

Enter the Upper Salon from the cockpit through the double glass doors. The arched doors and teak floors, panoramic views through large windows and twin sliding sunroofs gives an open yet weather-safe lounge. This is a large entertainment center with hidden TV, Bose Surround Sound and SAT Radio.

The large sofa to port and love seat to starboard are covered in soft, durable Ultraleather that shows very little sign of wear and tear. The floors are in beautiful condition.

- Beverage Holders, Stainless Steel (7)
- Curtains, Main Sunroom Doors
- Door, Cabin Entry w/Stainless-Steel Frame & Tempered/Tinted Glass (Sliding & Lockable)
- Doors, Sunroom Entry (Curved Sliding Lockable) Stainless Steel
- Entertainment Center: Bose, ® Lifestyle 48, 5.1-Channel Home Theater System Includes: Bose Media Center (Interfaced w/Sirius ® Satellite Receiver) 4-Jewel Cube Speakers, Horizontal Center Channel Speaker & Acoustimass Module, Storage Cabinet, CD & DVD, TV, 32" Flatscreen LCD HDTV w/Actuating Lift Mechanism, RTI-T3 Universal Remote Control.
- Flooring, Teak - Sunroom
- Handrails, 316 Stainless Steel
- Hardtop, Fiberglass w/2 Independent Retractable Sunroofs (Port & Starboard) & Overhead Lighting w/Electronic Dimmer
- Lighting, 24V Indirect w/Multiple-Way Switching Capacity
- Lift Mechanism
- Outlet, 12V Accessory
- Outlet, 120V GFI Protected
- Outlet, Cable TV
- Seating, Loveseat w/Storage Below -Starboard
- Seating, Stidd ® Highback Slimline Helm (Ultraleather HP™) w/Reclining
- Backrest, Chrome Fold-Down
- Footrest & Heavy-Duty Chrome
- Pedestal w/Swivel & Pneumatic
- Vertical Adjustment
- Seating, Stidd ® Double Companion (Ultraleather HP™) w/Reclining
- Backrest, Chrome Fold-Down
- Footrests (2) & Heavy-Duty Chrome

- Pedestal w/Swivel & Pneumatic
- Vertical Adjustment
- Seating, Sofa w/Storage Below & Movable Ottoman w/Storage - Port
- Ship's Bell
- Storage Cabinet w/Solid-Surface
- Countertop - Port
- Storage, Glove Box
- Table, Dining/Cocktail (Moveable) Hi-Lo w/High-Gloss Wood Surface

Helm

- Bow & Stern Thrusters, 24V
- Compass
- Emergency Start System - Engines
- Horn, Air - 24V
- Instrument Panels - High-Gloss
- Instrumentation: 6.3" Color LCD Display w/Auto Dimming & Enhanced Contrast in Daylight (Includes: Engine & Gear Box Data, Graphic Presentation of Analogue Round Instruments, Display of Alarm Status & Fuel Flow) (2)- Fuel Gauges (2)
- Shift & Throttle Controls, Electronic
- Spotlight w/Dual Halogen Bulbs - Remote Controlled (ACR®)
- Steering - Power Assisted w/Tilt Wheel
- Switches, Illuminated Weatherproof Rockers & Electronic Dimmer Control
- Systems Monitor, Digital LCD - For Pump Monitoring

Electronics

- New Garmin 8215 GPS/Chartplotters
- Garmin HD Radar w/6' Open Array Scanner
- Sea Ray Navigator™ III - 12.1" Sunlight-Viewable Touch-Screen Color LCD GPS/Chartplotter w/Water Temp & Depth Data - Auxiliary Display
- Autopilot, Raymarine Raypilot ST 8002+ VHF Radio, Raymarine 240 w/Remote
- Speaker & 8' Fiberglass Antenna
- Electronics Circuit, 12V/50 Amp

Saloon

- Coffee Table with Storage and Reversible Top
- Entertainment Center: Bose ® Lifestyle 3-2-1, 2.1-Channel, Home Entertainment System Includes: Bose Media Center, 2-Gemstone Speaker Arrays & Accoustimass Module - Storage Cabinet - CD & DVD - TV, 32" Flatscreen LCD HDTV Ottoman, Movable w/Dual-

Purpose Top (Cushion or Cocktail Table) & Bottle Storage Rack Below

- Seating, Curved Sofa (UltraleatherHP™)
- Steps, Entryway - Teak w/Stainless-Steel Handrail
- Storage Gunwale Cabinets
- Washer & Dryer, Separate Units -Stacked

Galley

The U-shaped galley is to starboard from the Saloon. Sub Zero refrigerator and freezer with stainless steel sink. Lots of good counter space and storage.

- Coffeemaker, 120V
- Countertop, Solid Surface w/Stainless- Steel Sink, Single-Lever Grohe ®
- Faucet w/Pull-Out Spray Head & Solid-Surface Sink Cover
- Flooring, Wood
- Freezer, Under-Counter w/Icemaker & Stainless-Steel Front (Sub Zero) - 120V
- Microwave/Convection Oven w/Stainless- Steel Face - 120V
- Power Vent, 24V
- Refrigerator, Under-Counter w/Stainless- Steel Front, (Sub Zero) - 120V
- Storage, Cabinets - Upper & Lower
- Storage, Drawers w/Cutlery Insert
- Storage, Glass Rack Cabinet
- Stove, Three-Burner w/Stainless-Steel
- Safety Rail - 240V
- Trash Receptacle w/Chute & Solid- Surface Cover

Cabins

- Blinds, Wood
- Carbon Monoxide Monitors
- Carpet, Masland ® 55-Ounce 100% Stainmaster BCF Nylon w/Dupont ® Advanced Teflon Repel System
- Carpet Runners, Interior (Sunbrella®)
- Doors, High-Gloss Solid Wood
- End Table
- Handrails, Stainless Steel
- Lighting, 120V Xenon (Low-Voltage AC)
- Lighting, 120V Indirect
- Lighting, 24V Indirect
- Lighting, 24V Xenon
- Outlets, 12V Accessory
- Outlets, 120V GFI Protected

- Outlets, Phone
- Outlet & Switch Plates - Satin Nickel Finish
- Pillows, Accent
- Storage, In-Floor
- Vacuum System, Central - Dual
- Inlet (Beam®)
- Wood Interior Package, (High-GlossVeneer) - Light Cherry or Dark Cherry

Master Stateroom

Aft is the full beam Master with reclining island queen. Large hull windows keep this space open and airy with ample hanging and drawer storage.

- Bed, Queen-Size w/Innerspring
- Mattress, Actuating Headrest & Footrest, Massage Function, Remote
- Control, Pillows, Sheets & Coordinated Spread w/Storage Below w/Gas-Assisted Lift
- Dresser w/Pull-Out Vanity, Mirror, Drawers & Storage Cabinets
- Entertainment Center: Bose ® Lifestyle 38, 5.1-Channel, Home Theater System
Includes:Bose Media Center (Interfacedw/Sirius® Satellite Receiver), 4 Direct/Reflecting Cube Speakers.Horizontal Center Channel Speaker & Accoustimass Module, TV, 32" Flatscreen LCD HDTV, RTI-T3 Universal Remote Control.
- Hanging Locker, Cedar Lined w/Light &Shelf - Port
- Hanging Locker, Cedar Lined w/Light - Starboard
- Night Stands (2)
- Seating, Sofa (Ultraleather HP™) w/Storage Below - Port
- Storage Cabinet, Fwd.Wall
- Storage, Shelves w/Retaining Rails

Master Head

- Bath Accessories - Towel Ring,Bathroom Tissue Holder & Robe Hook
- Flooring, Tile - Shower
- Flooring, Wood - Head
- Handrails, Stainless Steel
- Head, Elongated (VacuFlush®) - Electric
- Power Vent, 24V
- Mirrored Privacy Door
- Robe Hook, Head Door
- Shower w/Seat, Adjustable Shower Wand & Acrylic Door
- Storage Cabinets, Upper & Lower - Above Head
- Storage, Medicine Cabinet - Mirrored
- Vanity w/Solid-Surface Countertop,Undermount Stainless-Steel Sink,Grohe®Faucet,

Drawers & Storage

VIP Stateroom

The VIP Stateroom is forward providing privacy and ensuite head access. Large island queen berth and storage all around.

- Bed, Queen-Size Island Style w/Innerspring Mattress, Pillows, Sheets, Coordinated Spread w/Drawer
- Storage Below
- Entertainment Center: Bose ® Direct/Reflecting Cube Speakers (2), Accoustimass Module & SA-3 Amplifier, TV, 20" Flatscreen LCD, DVD Player
- Hanging Lockers, Cedar Lined w/Lights (Port & Starboard)
- Shades, Roman
- Storage, Side Shelves w/Retaining Rails

VIP / Day Head

- Bath Accessories - Towel Bar, Towel Ring, Bathroom Tissue Holder & Soap Dish
- Flooring, Tile
- Handrails, Stainless Steel
- Head, Elongated (VacuFlush®) - Electric
- Power Vent, 24V
- Robe Hook, Head Door
- Shower w/Seat, Adjustable Shower Wand & Circular Acrylic Door
- Storage, Medicine Cabinet - Mirrored
- Vanity w/Solid-Surface Countertop, Undermount Stainless-Steel Sink, Grohe ®Faucet, Drawers & Storage Below w/Trash

Guest Stateroom

- Beds, Upper & Lower Bunks w/Innerspring Mattresses, Pillows, Sheets, Coordinated Spreads & Carpeted Storage Below (Lower Bunk)
- Hanging Locker, Cedar Lined w/Light
- TV - 15" Flatscreen LCD w/DVD Player

Engine Room

Kay Sera Sera's extra clean engine room has over 7' of headroom and ease of access to all systems and areas needed for service and maintenance.

- Bilge Pumps, 24V Automatic (2)
- Bilge Pumps, 24V Automatic - High Water (2 Bilge, 1 Cabin)
- Blowers, 24V Bilge (2)
- Exhaust, Underwater - Patented
- Engine Drip Sumps
- Fan, Oscillating - 120V
- Fire Extinguishers
- Fire Suppression System - Automatic w/Diesel Shutdown, Override & Manual Pull
- Freshwater Cooling
- Gel-Coated Engine Room
- Insulation, Engine Room - 2" w/Loaded Vinyl Barrier
- Ladder, Stainless Steel - Removable
- Lighting, 24V
- Oil Changer System - Engines, Transmissions & Generator
- Crossover Fuel System (Generator Only)
- Fuel Filters, (3) (Racor®) (2) 75-1000MAX (Dual) for Engines (1) 500MAX for Generator
- Fuel Lines, USCG-Type A-1
- Fuel Tanks, Aluminum w/Ultrasonic Sending Units & Manual Shut-off Valves

Running Gear

- **Spare Propellers - Veem ® Nibral 4-Blade Cup**
- Bonding System w/Zinc Hull Plates (2)
- Propeller Shafts, 2.5" Stainless Steel (2) - Aquamet 22
- Propellers - Veem ® Nibral 4-Blade Cup
- Rudders - Manganese-Bronze w/Stainless-Steel Posts
- Seacocks on all Underwater Fittings
- Seawater Strainers
- Shaft Logs, Dripless w/Extra Seal Carrier Kit
- Struts - Manganese-Bronze
- Trim Tabs, Hydraulic

Electrical systems

- New AGM Batteries, w/Boxes (4)
- Battery Charger/Converter, 240V/50 Amp/24V
- Battery Charger Overcurrent Protection
- Battery Equalizer, 65 Amp (2)
- Battery Solenoid Switches, 12V (2) & 24V (3)
- C-Phone System - Internal Station-to-Station Intercom w/Ship-to-Shore Ability from all Phone Outlets (w/Phone Shore Cord Plugged In)
- Cable Television System w/Inlet (Includes Phone Inlet & Phone ShoreCord), TV Shore

- Cord, Coax Outlets, Gain Control & Antenna
- Panel, Circuit Breaker - Remote
- Panel, DC Main Breaker
- Panel, Main Distribution - AC
- Panel, Main Distribution - DC
- Shore Power, Secondary Cablemaster (Glendinning) 120V/50 Amp w/85' Cord & Wireless Remote
- Shore Power, Cablemaster (Glendinning) 240V/50 Amp w/85' Cord & Wireless Remote (Cablemaster Not Available w/220V/50 Cycle Shore Power)
- Transformer, Shore Power Isolation 120V/50 Amp, 240V/50 Amp
- Wiring, Color-Coded w/Chafe Protection

- Cabin: Zone-Controlled Reverse-Cycle Split System, 240V (Compressor Units in Engine Room, Air Handlers in Cabin) (48,000 BTU) Custom Integral Vent System
- Sunroom: Reverse-Cycle Split System 240V (Compressor Unit in Engine Room, Air Handlers in Sunroom) (40,000 BTU)

Water and Waste System

- Freshwater Washdown Spigots w/Hoses - Transom, Engine Room & Anchor Locker
- Pressure Water System w/24V Pump & Charcoal Filtration System
- Shower, Cockpit - Hot & Cold
- Water Inlet, Dockside
- Water Heater, 240V (20-Gallon)
- Water Manifold System

- Central Drain System
- Head System (VacuFlush®) - Electric
- Holding Tank Level Indicators - MDP & Heads
- Holding Tank w/Dockside Pump-Out (70 Gallon)
- Macerator w/Seacock Interlock System
- Sump Box w/Automatic Pump & Hinged Service Lid

Exclusions

Owner's personal belongings.

Disclaimer

The Company offers the details of this vessel or yacht in good faith but cannot guarantee or warrant the accuracy of this information nor warrant the condition of the vessel. A buyer should instruct his representatives, agents, or his surveyors, to investigate such details as the buyer

desires validated. This vessel or yacht is offered subject to prior sale, price change, or withdrawal without notice.

PHOTOS

Stainless Steel Anchor



Bow



Bow Sunpad Area



Bow II



Deckhouse



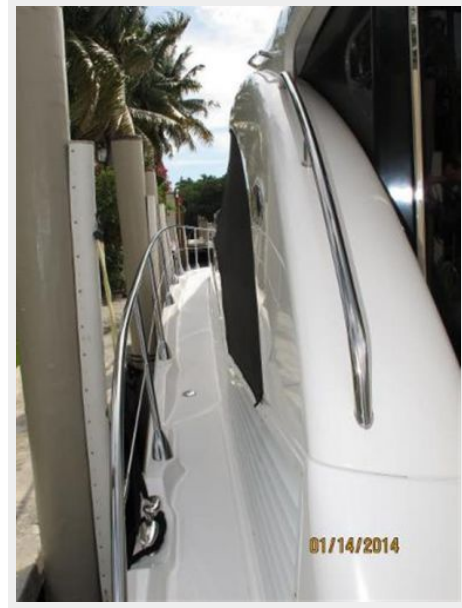
Aft



Aft Cockpit



Shiny Port Side



Shiny Starboard Side



Extra Large Winshield



6 Foot Open Array HD Radar



Swim Platform



Aft Bench Cover



Cockpit Table



Cockpit Grill and Fridge



Cockpit Wet Bar and Icemaker



Grill and Fridge



Icemaker



Aft Cockpit



Aft Bench Seat



Salon Doors



Salon Entry



Salon to Port



Salon to Starboard



Salon to Starboard II



Salon to Port II



Salon Fridge



Salon Entertainment Center



Hide Away Salon TV



Helm Seats



Dash



Helm w Garmin 8215s



Dash II



Dash III



Switch Panel



Remote Generator Panel



Garmin 8215s



Saloon Entry



Saloon



Saloon to Port



Saloon II



Galley



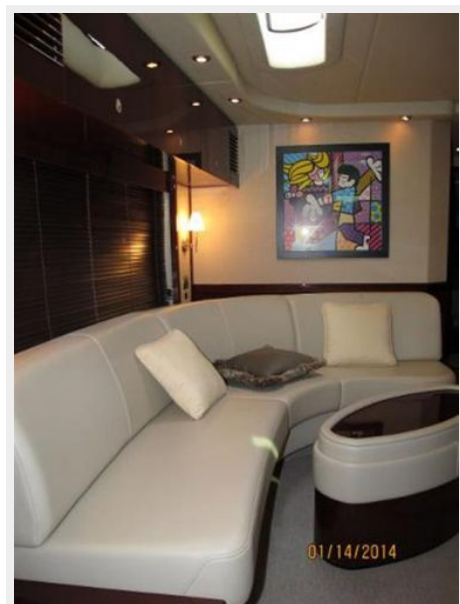
Saloon TV



Galley II



Saloon Sofa



Saloon Looking Forward



Electical Panel



3rd Stateroom



Galley Sub Zeros



Sub Zeros Open



Convection Microwave



Hallway Looking Forward



VIP to Starboard



VIP to Port



VIP Stateroom



VIP to Port II



VIP Closet



VIP Head



Hallway into Master Stateroom



Washer and Dryer



Master Bed



Master to Port



Master to Starboard



Master Water Closet



Mster Head



Master Shower



Large Windows in Master



Large Windows in Master II



Saloon Entertainment



Manufacturer Provided Image



Clean Bilge



Spare Props



Bow Thruster



Engine Room Hatch



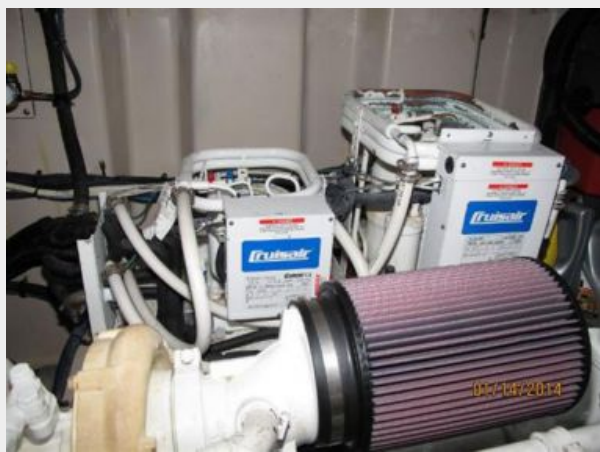
Engine Room Entry



Engine Room to Port



Portside Cruisair AC Units



To Port Aft



Twin Glenndinings



New AGM Batteries



Engine Room to Starboard



Starboard Side AC Units



Engine Room to Starboard Forward



Engine Strainers



Generator Quiet Box



Clean Generator



Port MAN 1100



Starboard MAN 1100



Generator II



New LED Underwater Lights



All Chain



Aft Lazarette



Aft Lazarette II



CONTACTS

Andrey Shestakov, leading yacht broker of the sales department of Shestakov Yacht Sales Inc. Shestakov Yacht Sales Inc., the official representative of the Miami/Fort Lauderdale FL headquarters.

Contact details

Email: andrey@shestakovyachtsales.com

Web: shestakovyachtsales.com/en/

Telephones

USA: +1(954)274-4435

Office hours

Monday – Saturday: **9:00 - 21:00** EDT

Sunday: **closed**

Address



Harbour Towne Marina, 850 NE 3rd St,
STE 213, Dania, FL 33004