

# SL96 - AMERICAS EDITION — SANLORENZO



**Builder:** SANLORENZO

**Year Built:** 2016

**Model:** Motor Yacht

**Price:** PRICE ON APPLICATION

**Location:** United States

**LOA:** 96' 0" (29.26m)

**Beam:** 22' 2" (6.76m)

**Max Draft:** 6' 0" (1.83m)

Our experienced yacht broker, Andrey Shestakov, will help you choose and buy a yacht that best suits your needs **SL96 - AMERICAS EDITION — SANLORENZO** from our catalogue. Presently, at Shestakov Yacht Sales Inc., we have a wide variety of yachts available on our sale's list. We also work in close contact with all the big yacht manufacturers from all over the world.

If you would like to buy a yacht **SL96 - AMERICAS EDITION — SANLORENZO** or would like help answering any questions concerning purchasing, selling or chartering a yacht, please call **+1(954)274-4435**

# TABLE OF CONTENTS

TABLE OF CONTENTS	2
SPECIFICATIONS	4
Overview	4
Basic Information	4
Dimensions	5
Speed, Capacities and Weight	5
Accommodations	5
Hull and Deck Information	5
Engine Information	5
DETAILED INFORMATION	6
DESCRIPTION	6
AMERICAS EDITION PACKAGE HIGHLIGHTS	6
ENGINE OPTIONS	7
Exclusions	7
Disclaimer	7
PHOTOS	8
PROFILE	8
RUNNING PROFILE	8
BOW	8
FLYBRIDGE	8
FLYBRIDGE	8
FLYBRIDGE	8
FLYBRIDGE	9
AFT DECK	9
MAIN SALON	9
AFT DECK	9
MAIN SALON	9
MAIN SALON W/ TERRACE	9

DINING AREA	10
MAIN SALON	10
MAIN SALON W/ TERRACE	10
CONVERTIBLE DINING/CONSOLE TABLE	10
CONVERTIBLE DINING/CONSOLE TABLE	10
GALLEY	10
GALLEY	10
MASTER STATEROOM	10
MASTER STATEROOM	11
MASTER STATEROOM	11
MASTER HEAD	11
MASTER HEAD	11
STARCASE/BOOKSHELF	11
VIP STATEROOM	11
STARCASE	12
VIP HEAD	12
VIP STATEROOM	12
CONVERTIBLE BERTH	12
GUEST HEAD	12
CONVERTIBLE BERTH	12
TENDER GARAGE	13
TENDER GARAGE	13
CONTACTS	14
Contact details	14
Telephones	14
Office hours	14
Address	14

---

# SPECIFICATIONS

---

## Overview

---

The SL96 is a stunning planning yacht. She has a contemporary profile, while retaining the traditional look of Sanlorenzo. As with the entire SL planing range, the interior of each yacht is tailored to reflect every owner's sense of style, taste, and individuality. Her owner is able to choose from an array of layouts to suit to their particular lifestyle. Built in Ameglia, Italy, this model is customized for the Americas market. The yacht has full "Americas Edition Standard" specifications, plus an array of exterior and interior options. New standard features include Zero speed stabilizers, larger generators, a hard top and extended hydraulic hi-lo swim platform.

Her exterior proudly offers a hull-side terrace off the main salon giving unobstructed views of the sea. The flybridge area is unmatched in this range of motoryachts. An aft tender garage allows for this wonderful, expanded space to be dedicated to enjoying time with fortunate companions, friends, and family.

The SL96 has a very innovative and adaptable layout. Sanlorenzo offers ultimate flexibility, allowing up to four suites for eight guests, with en-suite heads offering privacy for all guests. The master can be located on the main deck or at the full-beam area on the lower deck with his and her heads. A beautifully outfitted crew space allows for 4 crew and has access directly to the galley. The surprisingly large pilothouse offers your captain all that is needed to safely maneuver this amazing yacht.

At the 2011 Genoa International Boat Show, she won "Superyacht of the Year." She has since won four international awards to date, including the prestigious Environmental Protection Award at the ShowBoats Design Awards.

---

## Basic Information

---

**Category:** Motor Yacht

**Sub Category:** Flybridge

**Model Year:** 2016

**Year Built:** 2016

**Country:** United States

**Fly Bridge:** Yes

**Cockpit:** Yes

---

## Dimensions

---

**LOA:** 96' 0" (29.26m)

**LWL:** 77' 5" (23.60m)

**Beam:** 22' 2" (6.76m)

**Max Draft:** 6' 0" (1.83m)

---

## Speed, Capacities and Weight

---

**Displacement:** 230000 Pounds

**Water Capacity:** 502 Gallons

**Holding Tank:** 470 Gallons

**Fuel Capacity:** 3038 Gallons

---

## Accommodations

---

**Total Cabins:** 4

**Sleeps:** 8

**Total Heads:** 5

**Crew Cabin:** 2

**Crew Berths:** 4

**Crew Sleeps:** 4

**Crew Heads:** 2

---

## Hull and Deck Information

---

**Hull Material:** GRP

**Deck Material:** Teak

**Hull Configuration:** Planing

**Hull Designer:** Sanlorenzo

**Exterior Designer:** Francesco Pazowski

**Interior Designer:** Sanlorenzo

---

## Engine Information

---

**Engines:** 2

**Manufacturer:** MTU

**Model:** 12V2000 M94 or 16V2000 M84

**Engine Type:** Inboard

**Fuel Type:** Diesel

---

# DETAILED INFORMATION

---

## DESCRIPTION

---

The SL96 is a stunning planning yacht. She has a contemporary profile, while retaining the traditional look of Sanlorenzo. As with the entire SL planing range, the interior of each yacht is tailored to reflect every owner's sense of style, taste, and individuality. Her owner is able to choose from an array of layouts to suit to their particular lifestyle. Built in Ameglia, Italy, this model is customized for the Americas market. The yacht has full "Americas Edition Standard" specifications, plus an array of exterior and interior options. New standard features include Zero speed stabilizers, larger generators, a hard top and extended hydraulic hi-lo swim platform. Her exterior proudly offers a hull-side terrace off the main salon giving unobstructed views of the sea. The flybridge area is unmatched in this range of motoryachts. An aft tender garage allows for this wonderful, expanded space to be dedicated to enjoying time with fortunate companions, friends, and family. The SL96 has a very innovative and adaptable layout. Sanlorenzo offers ultimate flexibility, allowing up to four suites for eight guests, with en-suite heads offering privacy for all guests. The master can be located on the main deck or at the full-beam area on the lower deck with his and her heads. A beautifully outfitted crew space allows for 4 crew and has access directly to the galley. The surprisingly large pilothouse offers your captain all that is needed to safely maneuver this amazing yacht. At the 2011 Genoa International Boat Show, she won "Superyacht of the Year." She has since won four international awards to date, including the prestigious Environmental Protection Award at the ShowBoats Design Awards.

---

## AMERICAS EDITION PACKAGE HIGHLIGHTS

---

- Hard top
- Tender garage
- Extended hydraulic hi-lo swim platform
- US electrical system: 127/220V
- Shore power: Two (2) 220V AC 100A three-phase 60Hz
- Ground fault circuit interrupter (GFCI)
- Larger generators: Two (2) 55kW
- Glendenning cablemasters: One (1) CM8
- Engine oil change system
- Additional black and grey water pumps
- Water tank purification system
- Larger air conditioning capacity: 240,000 BTU
- USCG approved fire system
- Prop speed on shafts, propeller, bow and stern thruster, intruder, brackets, rudder and hydraulic swim platform system
- Back-up systems for most machinery and mechanical systems
- US appliances, most are Miele or Asko

- Refrigerators and freezers are Sub-Zero/Scotsman/Frigonautica

---

## ENGINE OPTIONS

---

- MTU 12V2000 M94 - 2 x 1,950 Hp
- MTU 16V2000 M84 - 2 x 2,200 Hp

---

## Exclusions

---

Owner's personal belongings.

---

## Disclaimer

---

The Company offers the details of this vessel or yacht in good faith but cannot guarantee or warrant the accuracy of this information nor warrant the condition of the vessel. A buyer should instruct his representatives, agents, or his surveyors, to investigate such details as the buyer desires validated. This vessel or yacht is offered subject to prior sale, price change, or withdrawal without notice.

# PHOTOS

**RUNNING PROFILE**



**PROFILE**



**BOW**



**FLYBRIDGE**



**FLYBRIDGE**



**FLYBRIDGE**





**AFT DECK**



**FLYBRIDGE**



**AFT DECK**



**MAIN SALON**



**MAIN SALON W/ TERRACE**



**MAIN SALON**



**DINING AREA**



**MAIN SALON**



**MAIN SALON W/ TERRACE**



**CONVERTIBLE DINING/CONSOLE TABLE**



**CONVERTIBLE DINING/CONSOLE TABLE**



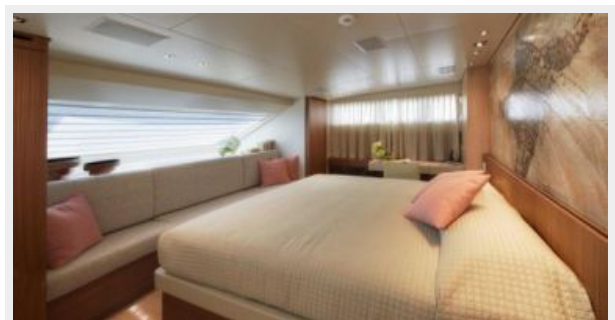
**GALLEY**



**GALLEY**



**MASTER STATEROOM**





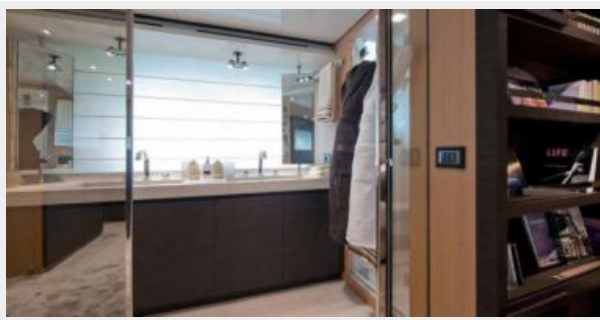
**MASTER STATEROOM**



**MASTER STATEROOM**



**MASTER HEAD**



**MASTER HEAD**



**STARCASE/BOOKSHELF**



**VIP STATEROOM**



**VIP HEAD**



**STARCASE**



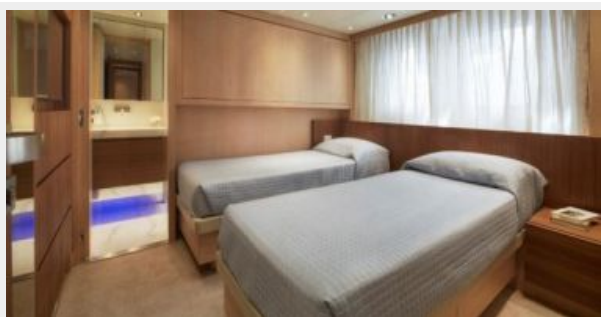
**VIP STATEROOM**



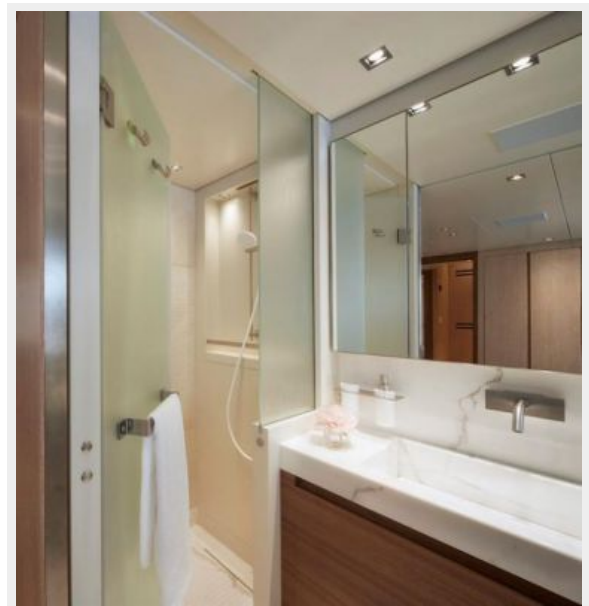
**CONVERTIBLE BERTH**



**CONVERTIBLE BERTH**



**GUEST HEAD**



## TENDER GARAGE



## TENDER GARAGE



# CONTACTS

---

Andrey Shestakov, leading yacht broker of the sales department of Shestakov Yacht Sales Inc. Shestakov Yacht Sales Inc., the official representative of the Miami/Fort Lauderdale FL headquarters.

## Contact details

---

Email: [andrey@shestakovyachtsales.com](mailto:andrey@shestakovyachtsales.com)

Web: [shestakovyachtsales.com/en/](http://shestakovyachtsales.com/en/)

## Telephones

---

USA: +1(954)274-4435

## Office hours

---

Monday – Saturday: **9:00 - 21:00** EDT

Sunday: **closed**

## Address

---



Harbour Towne Marina, 850 NE 3rd St,  
STE 213, Dania, FL 33004