

FRANCESCA — TIARA



Судостроитель: TIARA

Год постройки: 1997

Модель: Катер для спортивной рыбалки

Цена: ЦЕНА ЯХТЫ ПО ЗАПРОСУ

Местонахождение: United States

Длина общая: 41' 0" (12.50m)

Ширина: 14' 6" (4.42m)

Мин. осадка: 3' 6" (1.07m)

Крейс. скорость: 27 Kts. (31 MPH)

Макс. скорость: 32 Kts. (37 MPH)

Купить **Francesca — TIARA** а также выбрать подходящую вам яхту из нашего каталога яхт вам поможет опытный яхтенный брокер Андрей Шестаков. На сегодняшний день компания **Shestakov Yacht Sales Inc.** имеет большое количество яхт в собственном списке продаж, а также тесно сотрудничает со всеми крупными яхтенными производителями по всему миру.

Для того чтобы купить яхту **Francesca — TIARA** а также проконсультироваться по любому вопросу связанному с покупкой, продажей, чартером яхт позвоните по телефону **+7(918)465-66-44**.

ОГЛАВЛЕНИЕ

ОГЛАВЛЕНИЕ	2
ХАРАКТЕРИСТИКИ	4
Основная информация	4
Размеры	4
Скорость, вместимость и масса	4
Размещение	4
Корпус и палуба	4
Информация о двигателе	5
ПОДРОБНОЕ ОПИСАНИЕ	6
Description	6
Engines	6
Bow Stateroom	6
Head	7
Main Cabin/Salon	7
Galley	7
Helm	8
Tower	9
Mechanical And Electrical Equipment	9
Electronics	10
Deck Equipment	10
Major Mechanical And Cosmetic Refit In March 2012	10
Cockpit	11
Exclusions	11
Remarks	11
Исключения	12
Отказ от ответственности	12
ФОТОГРАФИИ	13
Bow Deck	13

Cockpit 1	13
Cockpit Tackle Center	13
Galley	13
Helm Deck Entry	14
Salon Table	14
Master	14
Master Bed	14
Shower	15
Helm	15
Helm Console	15
Wet Bar and Storage	15
Night Lights	16
Helm Deck Seating	16
Side Deck Port	16
Night Lights	16
Side Deck Stbd	17
Tower 1	17
Tower 2	17
Tower 3	17
КОНТАКТЫ	18
Контактная информация	18
Телефоны	18
Время работы	18
Адрес	18

ХАРАКТЕРИСТИКИ

Основная информация

Тип судна: Катер для спортивной рыбалки

Модельный год: 1997

Год постройки: 1997

Страна: United States

Регистрационный номер: 4919404

Кубрик: Да

Размеры

Длина общая: 41' 0" (12.50m)

Ширина: 14' 6" (4.42m)

Мин. осадка: 3' 6" (1.07m)

Скорость, вместимость и масса

Крейс. скорость: 27 Kts. (31 MPH)

Макс. скорость: 32 Kts. (37 MPH)

Водоизмещение: 27500 Pounds

Вместимость воды: 130 Gallons

Вместимость сточного бака: 50 Gallons

Объем топливного бака: 524 Gallons

Размещение

Всего кают: 1

Всего ком. состава: 1

Корпус и палуба

Материал корпуса: Fiberglass

Информация о двигателе

Двигатели: 2

Производитель: MAN

Модель: 2448LE401@680HP

Тип двигателя: Inboard

Тип топлива: Diesel

ПОДРОБНОЕ ОПИСАНИЕ

Description

The 41' Tiara is muscular big water express with spacious cockpit with upscale interior that blurs the lines between a tournament grade fishing machine and a feature rich sportscruiser. Classy single stateroom interior includes a big L-shaped soft/dinette. Open galley with plenty of storage and a very roomy head. Raised bridge deck, three steps above cockpit, provides exceptional helm visibility. Large cockpit boasts beefy transom door engine room entry door. Wide side decks are a plus. Engines are twin MAN diesel with 255 hours SMOH each. New upholstery throughout in 2012.

Engines

- Engine 1: PORT
 - Engine Brand: MAN
 - Engine Model: 2448LE401@680HP
 - Engine Type: Inboard
 - Engine/Fuel Type: Diesel
 - Engine Hours: 255 SMOH
-
- Engine 2: Starboard
 - Engine Brand: MAN
 - Engine Model: 2448LE401@680HP
 - Engine Type: Inboard
 - Engine/Fuel Type: Diesel
 - Engine Hours: 255 SMOH

Vessel was re-powered with MAN 2448LE401 Engines

Bow Stateroom

- Queen sized island berth with storage, mattress, bedspread & pillows
- New teak & holly sole
- Marine Air A/C control panel
- Air conditioning air handler under berth
- 15" Flat screen TV
- Port & starboard shelves
- Port & starboard storage lockers
- Indirect soffit lighting

- Mirrored forward bulkhead w/reading lights
- Two cedar lined hanging lockers
- Overhead hatch with screen
- Xintec CO@ monitor
- Telephone jack

Head

- Molded fiberglass sole
- Fiberglass vanity with Corian counter top & molded sink
- Hot/cold water faucet with water filter
- Mirrored door on medicine chest over vanity
- Storage lockers with fluorescent lights
- Vacuflush head
- Two recessed lights above vanity counter and under medicine chest
- Ventilating fan
- Overhead hatch with screen
- Show stall with plexiglass door with shower head on hose with wall mount

Main Cabin/Salon

- New upholstery throughout (2012)
- New teak & holly sole
- L-shaped sofa
- High-low table
- Three overhead lights
- Three recessed Soffit lights
- 15" flat screen TV with DVD Recorder
- Hanging locker w/AV control center
- Teak steps up to helm and cockpit
- Overhead hatch with screen
- Marine Air A/C controls
- Deck access hatch to bilge
- New upholstery throughout vessel
- Electric distribution panel with two polarity indicators
- Generator preheat start/stop switches
- Marine Air A/C control panel
- Zintex holding tank/fresh water level monitor
- Marine Air A/C handler

Galley

- New Teak and Holly sole
- Vinyl padded overhead
- Corian counter
- Stainless steel circular sink with hot/cold water faucets
- Panasonic microwave oven
- 2 burner electric stove top
- Refrigerator/freezer
- Recessed Nutone food center and storage area
- Overhead hatch with screen
- 2 overhead lights
- Five recessed spotlights above galley counter
- Deck hatch access to bilge
- 130-gallon aluminum water tank under galley sole
- Two fresh water pumps in parallel with accumulator tank and filter

Helm

- Adjustable bench helm seat w/fiberglass footrest
- Raised curved bench seat w/storage and fiberglass footrest
- Backrest cushions
- Wet bar w/ice maker and storage
- Non-skid fiberglass deck
- Storage locker
- Main Helm
- ZF-single lever electronic clutch & throttle
- Steering wheel
- Engine ignition, start & stop panel
- Battery parallel switch
- Ritchie power damp compass
- VDO rudder angle indicator
- Tachometers
- Water temperature gauge
- Volts gauge
- Drive oil pressure gauge
- Fuel tank gauges
- Glendinning engine synchronizer
- Switches for horn
- Navigation/anchor light
- Panel lights
- Courtesy lights
- Bilge pump (3) switches
- Glass windshield with (3) wipers
- Center windshield vent

- Engine room blower switches
- Indicator lights for running lights
- Fireboy engine shut down system
- Halon system activated
- Bennett trim tab indicators
- Trim tab controls
- Fuse panel
- ACR search light control
- Emergency engine shut down cables
- Desirable hardtop option with tower
- Two (2) overhead hatches
- Full helm enclosure with aft drop curtain
- Centerline opening windshield vent
- New cushions (2012)

Tower

- Tuna Tower with full controls and buggy top
- ZF single lever electronic controls
- Hynautic upper steering helm
- Steering wheel
- Double spreader outriggers
- Center rigger
- Aft tower (6) rod holders
- Tower legs (4) rod holders
- Ritchie powerdamp compass
- Glendinning synchronizer switch
- ACR spotlight controls
- Navigation lights
- Quartz deck lights-aft tower
- Quartz deck lights-forward tower

Mechanical And Electrical Equipment

- Onan 9.0 kW generator with 711 hrs
- Lighting 110/12 volt
- Engine synchronizer
- Oil change system, engines & genset
- Waste macerator w/ Y-valve
- Shower sump tank w/electric/auto bilge pump
- Overhead discharge Y-valve
- Head vacuum pump

- Head vacuum tank
- Head holding tank – Aluminum

Electronics

- Furuno Navnet 3D - Plotter and Bottom Sounder
- Furuno Open Array Radar
- Furuno Autopilot
- Furuno RD 30 depth
- Cockpit Camera with DVD Recorder
- VHF Radios (2) Standard GX5000
- Tracvision M3 Satellite TV
- ACR spotlight

Deck Equipment

- Fiberglass bow pulpit with anchor roller
- Anchor Windlass
- Anchor with chain and rope
- Anchor chair lock
- Anchor/forepeak locker
- Hardtop
- Tuna Tower
- Life Raft
- Navigation lights
- Bow rail
- Bow cleats
- Spring cleats (2) port and starboard
- Stern cleats
- Bow deck (3) hatches
- Waste pump out outlet
- Diesel fill cap
- Water fill cap
- Underwater (6) lights
- New bilge pumps and hoses (2012)
- New sanitation hose (2012)

Major Mechanical And Cosmetic Refit In March 2012

- MAN engines @ 680 HP - 250 hrs SMOH
- New ZF single lever electronic (clutch & throttle) controls

- New drive shafts
- Rebuilt transmissions
- New upholstery throughout
- New electronics Nav/Net 3-D
- New Teak and Holly floors
- New life raft
- Custom engine room entry
- Mezzanine type seating
- Ice maker-helm bar
- New bilge pumps and hoses
- New sanitation hose

Cockpit

- Tackle center with top seat cushions
- Cockpit freezer
- Engine room access
- Nonskid fiberglass sole
- Release marine (6-rod) Rocket Launchers with stainless steel pedestal
- Nine (9) recessed gunwale rod holders
- Full cockpit combing pads
- Transom door & gate
- Built in steps
- Dockside water connector
- Marincos telephone/television connector
- Marincos 30A 125-volt shore power connector
- Salt-water wash down
- Fresh water wash down
- 4 stern cleats
- 3 access hatches to storage boxed & bilges
- Showerhead on retractable hose with hot & cold-water faucet
- Retractable shore power cord with switch
- Port & starboard gunwale access door to storage areas
- Underwater (6) lights

Exclusions

Personal effects, fishing tackle and tools

Remarks

This boat has been meticulously maintained. She is very clean and mechanically sound.

Исключения

При продаже яхты исключаются личные вещи владельца.

Отказ от ответственности

Компания предоставляет описание судна или яхты добросовестно, но не может гарантировать точность этой информации, а также не ручается за техническое состояние. Покупатель должен проинструктировать своих агентов или оценщиков исследовать представленную информацию более подробно, по собственному желанию. Продажа судна или яхты, изменение цены или снятие с продажи будет происходить без предварительного уведомления.

ФОТОГРАФИИ

Bow Deck



Cockpit 1



Cockpit Tackle Center



Galley



Salon Table



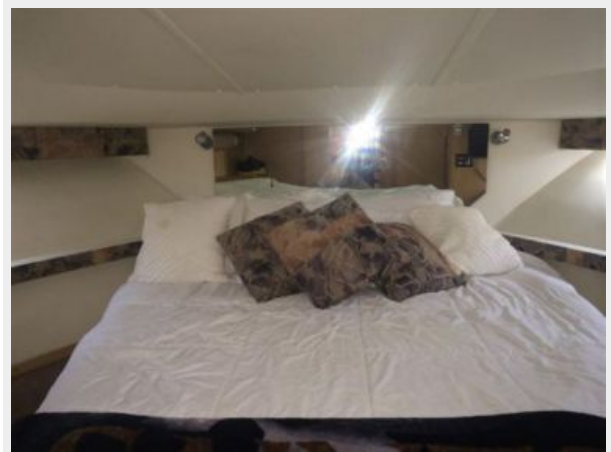
Helm Deck Entry



Master



Master Bed



Shower



Helm



Helm Console



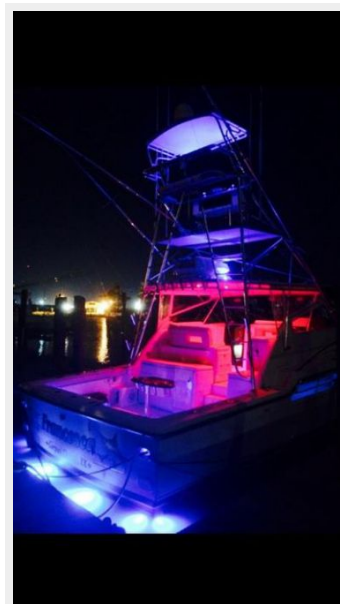
Wet Bar and Storage



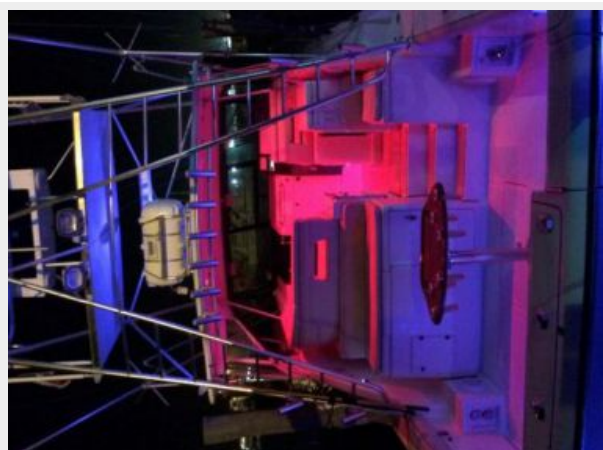
Helm Deck Seating



Night Lights



Night Lights



Side Deck Port



Side Deck Stbd



Tower 1



Tower 2



Tower 3



КОНТАКТЫ

Андрей Шестаков (Andrey Shestakov) – ведущий яхтенный брокер отдела продаж яхт и судов компании Shestakov Yacht Sales Inc. Официальный представитель Shestakov Yacht Sales Inc. для русскоговорящих клиентов в центральном офисе компании в Майами/Форт Лодердейл/Флорида/США.

Контактная информация

Email: andrey@shestakovyachtsales.com

Web: shestakovyachtsales.com

Телефоны

Краснодарский край: **+7(918)465-66-44**

США, Майами, Флорида: **+1(954)274-4435**

Время работы

Понедельник – Суббота: **9:00 - 21:00**
EDT

Воскресенье: **Закрето**

Адрес



Harbour Towne Marina, 850 NE 3rd St,
STE 213, Dania, FL 33004