

## FREE SPOOL — DAVIS BOATWORKS



**Builder:** DAVIS BOATWORKS

**Year Built:** 2005

**Model:** Sport Fisherman

**Price:** PRICE ON APPLICATION

**Location:** United States

**LOA:** 48' 0" (14.63m)

**Beam:** 15' 8" (4.78m)

**Min Draft:** 4' 3" (1.30m)

**Max Draft:** 4' 5" (1.35m)

**Cruise Speed:** 30 Kts. (35 MPH)

**Max Speed:** 36 Kts. (41 MPH)

Our experienced yacht broker, Andrey Shestakov, will help you choose and buy a yacht that best suits your needs **FREE SPOOL — DAVIS BOATWORKS** from our catalogue. Presently, at Shestakov Yacht Sales Inc., we have a wide variety of yachts available on our sale's list. We also work in close contact with all the big yacht manufacturers from all over the world.

If you would like to buy a yacht **FREE SPOOL — DAVIS BOATWORKS** or would like help answering any questions concerning purchasing, selling or chartering a yacht, please call **+1(954)274-4435**

# TABLE OF CONTENTS

---

TABLE OF CONTENTS	2
SPECIFICATIONS	6
Basic Information	6
Dimensions	6
Speed, Capacities and Weight	6
Accommodations	6
Hull and Deck Information	7
Engine Information	7
DETAILED INFORMATION	8
Walkthrough	8
Salon	8
Galley	9
Head	9
Forward Cabin	9
Foredeck	9
Cockpit	10
Helm Deck Area	10
Tower	10
Engine Room	11
Electrical	11
Remarks	11
Exclusions	11
Disclaimer	12
Exclusions	12
Disclaimer	12
PHOTOS	13
Salon Looking Forward	13
Salon to Starboard	13

---

Salon TV	13
Salon to Starboard	13
Salon Looking Aft	13
Salon Portside	13
Salon Electrical Panel	14
Galley Looking Aft	14
Galley Looking Forward	14
Galley	14
Microwave	14
Head	14
Stateroom Looking Forward	15
Stateroom to Port	15
Stateroom to Starboard	15
Foredeck	15
Foredeck	15
Windlass Detail	15
Cockpit	16
Cockpit	16
Blue LED	16
Cockpit	16
Fighting Chair	16
Fighting Chair	16
Helm Deck	17
Portside Seating	17
Starboard Side Seating	17
Looking Aft	17
Looking Forward	17
Cabin Entrance	17
Hydraulic Storage Hatch	18

---

Helm	18
Electronics Pod Closed	18
Electronics	18
Helm Pod	18
Helm Detail	18
Helm Detail	19
Cockpit Breaker Panel	19
Tower	19
Tower	19
Tower	19
Tower Helm	19
Tower Seating	20
Cockpit From Above	20
LED Spreader Lights	20
Engine Room Entrance	20
Starboard Engine	20
Port Engine	20
Generator	21
Alternate Profile	21
Alternate Profile	21
Alternate Profile	21
Stern Shot	21
Sept. 2015 Bottom & Prop Service	21
Sept. 2015 Bottom & Prop Service	22
Sept. 2015 Bottom & Prop Service	22
Sept. 2015 Bottom & Prop Service	22
CONTACTS	23
Contact details	23
Telephones	23

---

Office hours	23
Address	23

---

# SPECIFICATIONS

---

## Basic Information

---

**Category:** Sport Fisherman

**Sub Category:** Express

**Model Year:** 2005

**Year Built:** 2005

**Country:** United States

**Vessel Top:** Full / Tuna Tower

**Cockpit:** Yes

## Dimensions

---

**LOA:** 48' 0" (14.63m)

**LOD:** 49' 11" (15.21m)

**Beam:** 15' 8" (4.78m)

**Min Draft:** 4' 3" (1.30m)

**Max Draft:** 4' 5" (1.35m)

**MFG Length:** 47' 10" (14.58m)

## Speed, Capacities and Weight

---

**Cruise Speed:** 30 Kts. (35 MPH)

**Max Speed:** 36 Kts. (41 MPH)

**Displacement:** 46000 Pounds

**Water Capacity:** 120 Gallons

**Holding Tank:** 35 Gallons

**Fuel Capacity:** 820 Gallons

## Accommodations

---

**Total Cabins:** 1

**Total Berths:** 1

**Sleeps:** 4

**Total Heads:** 1

---

## Hull and Deck Information

---

**Hull Material:** Fiberglass

**Deck Material:** Teak

**Hull Configuration:** Modified V-Hull

**Hull Color:** white

**Hull Designer:** Davis Yachts

**Exterior Designer:** Buddy Davis

**Interior Designer:** Buddy Davis

---

## Engine Information

---

**Engines:** 2

**Manufacturer:** Caterpillar

**Model:** C-18

**Engine Type:** Inboard

**Fuel Type:** Diesel

---

# DETAILED INFORMATION

---

## Walkthrough

---

Boarding FREE SPOOL is by either through the transom door from a floating dock or over the covering boards to a built in step both port and starboard.

The “All Business” Cockpit has freezer space, refrigerated space, a catch well, live well, chipped ice storage and a full size fighting chair.

Up three centerline steps to the Helm Deck with a center helm with a varnished helm pod, electronics on a lift, two L shaped seats, full enclosure and two oversized air conditioning units.

The Salon is down five steps, has seating port and starboard, a full Galley forward with a full Head to starboard and a private Cabin in the forepeak.

## Salon

---

Entrance to the Cabin is slightly to port and down five teak steps. The bottom three lift for storage.

The raised Salon area is carpeted and partially covered with a carpet runner. Immediately to starboard is an L shaped Ultra Suede sofa with hinged storage access below.

Aft in two teak trimmed lockers behind smoked Plexi doors is a Sony Marine AM/FM/CD/stereo for the exterior of the vessel and a Bose Lifestyle AM/FM/CD player with hidden speakers and a subwoofer under the sofa. The second cabinet has a Toshiba DVD player within.

A cabinet outboard of the sofa could be set up for rod storage and is lit from above.

Forward facing the sofa is a Samsung 32” LCD TV built into a teak frame.

In front of the sofa is a high gloss varnished hi lo coffee table with two drop leaves. To port is a matching two person settee, built in book shelves lit from above and the electric locker aft.

Forward and down one step is the Galley.

Also located in the Salon:

(9) LED overhead spots CO monitor Carpet runner (2) SMX AC controls for Cockpit (1) SMX AC control for Salon



---

## Galley

---

The Galley is next forward to port and includes the following features:

Wood planked sole Sub Zero refrigerator drawer w/teak front Sub Zero freezer drawer w/teak front Two level Corian countertop Under mount stainless steel sink w/Corian cover Single lever removable spray faucet Princess two burner Ceran top cook top w/Corian cover Sharp Carousel Grill 2 microwave/convection oven behind a teak door (12) High gloss varnished teak doors (3) High gloss varnished teak drawers Small overhead Bomar deck hatch w/Ocean Air sliding screen & shade (5) Overhead LED lights

---

## Head

---

To starboard is the enclosed Head with the following features:

Hardwood planked sole Corian countertops w/seamless Corian sink Raritan Atlantes head w/electric flush control Stall shower w/clear glass bi fold door Corian seat in shower Light in shower Handheld or wall mounted shower fixture (3) Beveled edge mirrored medicine cabinet doors Tank Watch 4 holding tank monitor Storage cabinet below vanity Exhaust fan AC vent (5) LED overhead lights Small Bomar deck hatch w/Ocean Air sliding screen & shade

---

## Forward Cabin

---

The single cabin aboard FREE SPOOL is all the way forward and will sleep two to starboard.

There are two drawers under the berth, additional storage under the mattress, a hanging locker with cedar lining and an auto light.

Above the berth to starboard are four hinged teak front storage lockers with three additional to port.

Also in this cabin a backlit mirrored etching forward, a Corian nightstand, a Pioneer AM/FM/CD stereo with speakers, digital SMX AC controls, a Sharp Aquos 13" LCD TV, seven overhead LED lights and a large Bomar deck hatch with an Ocean Air sliding screen and shade.

---

## Foredeck

---

Fiberglass nonskid deck Varnished teak toe rail (3) Bomar deck hatches (4) Spring line cleats Teak bow pulpit Simpson Lawrence windlass Spirit 1500 Foot switch for windlass Delta stainless steel anchor w/10' chain & 150' of nylon rode Deck access hatch to anchor locker International Navigation lights LED, new 2012 ACR remote control searchlight FLIR night vision camera Forward hailer horn Rupp double spreader outriggers

## Cockpit

Teak over fiberglass deck Refrigerator box, starboard forward w/removable cushion above Freezer box, port forward w/removable cushion above Ice shipper empties into port freezer Port & starboard built in side deck steps w/storage below Freshwater wash down in starboard locker Salt water wash down in starboard locker Electric reel outlets port & starboard Hydraulic hatch to Engine Room centerline under steps Release fighting chair w/rocket launcher backrest & cover Tuna door & gate portside aft Fish box centerline below deck Lift out storage box starboard Teak covering boards Upholstered Cockpit bolsters (6) Flush mounted rod holders (4) Rod holders on each tower leg Hinged storage cabinet above each freezer/fridge box w/(2) tackle drawers each side Cockpit shower 6 Place rocket launcher on aft rail (5) Under coaming lights - Blue LED (2) Under coaming speakers

## Helm Deck Area

Fiberglass hardtop w/(5) recessed LED lights Teak over fiberglass sole L Shaped bench seat to port w/removable cushions raises on electrohydraulic ram L Shaped bench seat starboard aft w/removable cushions raises on electrohydraulic ram 4 Side EZ2CY enclosure curtains Teak helm chair w/footrest Teak companion chair w/footrest Sony stereo speakers JL Audio subwoofer Air conditioning compressors under port & starboard Storage compartments port & starboard forward seats aft Sliding door to Main Cabin, port forward (2) Teaser reels overhead Electrical panel for Helm Area in starboard forward cabinet (2) Raymarine E-120 wide touch screen multifunction displays, each reads out: a) color plotter b) color 72 mile radar (4 KW HD open amp) c) color sounder d) Direct TV e) all CCTV cameras f) FLIR night vision g) Sirius weather h) Sirius music Raymarine ST 70 autopilot system FLIR night vision camera & control panel ACR spotlight remote #URP 102 Icom – M604 VHF w/DSC & remote mount MIC Sony stereo remote Anchor windlass controls Varnished teak helm pod w/complete analog instrumentation for both engines Ritchie magnetic bulkhead mount compass Electronics are mounted in popup electrohydraulic box forward of helm Raymarine ST70 wind system w/ST60 wind system readout Sony RMX60M marine stereo system w/nav station remote, 600 watt amp, (4) speakers & subwoofer Interior sun shades of Textulene (2) CAT LCD engine gauges Glendinning single lever controls w/push button panel SSI binocular box Bilge pump monitor lights 110 Volt GFCI outlet under helm Seat cushion outboard of cabin door

## Tower

Fiberglass hardtop Fiberglass sole Icom M602 VHF w/DSC Givens 6 person life raft w/hydrostatic release Padded bench seat aft Center rigger Fiberglass helm pod Glendinning engine controls ACR spotlight control Raymarine E-90 wide screen MFD Ritchie magnetic compass Horn button Dual trumpet horn Engine shutdown buttons ACR 406 EPIRB (4) Lumitec LED spreader lights, (2) forward, (2) outboard Forward looking CCT camera Aft looking CCTV camera Aluminum arch type top w/fiberglass hardtop Raymarine wind sensor 48" Open array HD Raymarine radar scanner (2) Raymarine GPS sensors

## Engine Room

---

(5) Automatic/manual Rule bilge pumps High water alarm system Eskimo ice machine model E-600 Watermakers Inc. watermaker 800 GPD Dual Racor 1000 fuel filters for each engine Algae X fuel conditioners Racor 500 fuel filter for generator Dripless shaft seals CCTV camera, starboard aft Hydraulic steering reservoir Reverso oil change pump (5 position) Air conditioning raw water pump raw water wash down pump (2) Engine Room exhaust fans 60.5 lb. FE 241 Fireboy fire suppression system Bennet trim tab system w/double rams Generator exhaust muffler Dripless rudder seals Sea Star power steering system AC fluorescent Engine Room lighting DC incandescent Engine Room lighting (4) Cruise Air direct expansion AC compressors ZF 500/F transmissions w/1.964 to 1 ratio 2.5" Stainless steel prop shafts (2) Emergency bilge pumps engine driven via diverter Airsep crankcase ventilation system Coolant recovery bottles on main engines Port & starboard centralized drainage system (4) New turbos 5/15 Generator coolant recovery bottle Dry wrapped exhaust (2) Engine block heaters Class S 4 blade Veem Interceptor props, new 2013

## Electrical

---

12/24 Volt DC electrical systems 110/220 Volt AC electrical systems 12V Charles 40 amp battery charger 24V Charles 50 amp battery charger (4) 8D batteries port (4) 8D batteries starboard Northern Lights 12 KW generator, new 2013, w/1610 hours Battery parallel system Glendinning 50 amp cable master (4) Battery shutoff switches Group 27 generator start battery

Salon AC panel with: (2) digital amp & (2) volt meters (24) Breaker protected 110V circuits (7) Breaker protected 220V circuits Switch panel for shore/generator Generator start/stop panel w/full gauges

Salon DC panel with: (2) digital volt meters & (2) digital amp meters (17) Breaker protected 12 volt circuits (22) Breaker protected 24 volt circuits

## Remarks

---

FREE SPOOL represents a serious "Blue Water" fish boat with great offshore capabilities, reliable C-18 CATs, ice chipper, new electronics, air conditioned Helm Deck, a finely finished interior... all in a manageable size to maintain, dock and fuel!

## Exclusions

---

While every effort was made to list all pertinent included equipment aboard FREE SPOOL, there are some personal belongings aboard. Prospective purchasers should assume any item not specifically mentioned herein will not convey at closing.

---

## Disclaimer

---

The Company offers the details of this vessel in good faith but cannot guarantee or warrant the accuracy of this information nor warrant the condition of the vessel. A buyer should instruct his agents, or his surveyors, to investigate such details as the buyer desires validated. This vessel is offered subject to prior sale, price change, or withdrawal without notice.

---

## Exclusions

---

Owner's personal belongings.

---

## Disclaimer

---

The Company offers the details of this vessel or yacht in good faith but cannot guarantee or warrant the accuracy of this information nor warrant the condition of the vessel. A buyer should instruct his representatives, agents, or his surveyors, to investigate such details as the buyer desires validated. This vessel or yacht is offered subject to prior sale, price change, or withdrawal without notice.

# PHOTOS

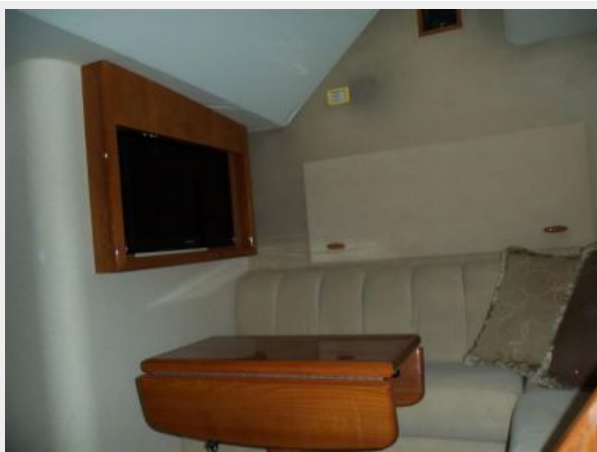
**Salon Looking Forward**



**Salon to Starboard**



**Salon TV**



**Salon to Starboard**



**Salon Looking Aft**



**Salon Portside**



**Salon Electrical Panel**



**Galley Looking Aft**



**Galley Looking Forward**



**Galley**



**Microwave**



**Head**



**Stateroom Looking Forward**



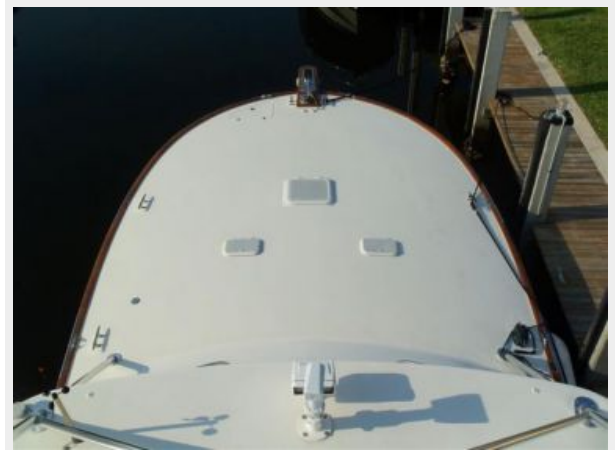
**Stateroom to Port**



**Stateroom to Starboard**



**Foredeck**



**Foredeck**



**Windlass Detail**



**Cockpit**



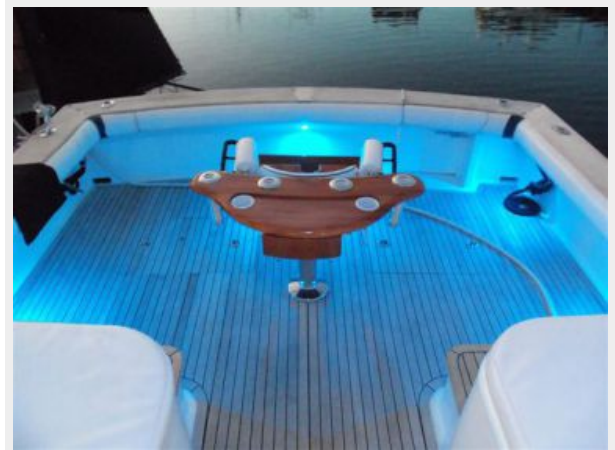
**Cockpit**



**Blue LED**



**Cockpit**



**Fighting Chair**



**Fighting Chair**





**Helm Deck**



**Portside Seating**



**Starboard Side Seating**



**Looking Aft**



**Looking Forward**



**Cabin Entrance**



**Hydraulic Storage Hatch**



**Helm**



**Electronics Pod Closed**



**Electronics**



**Helm Pod**



**Helm Detail**



**Helm Detail**



**Cockpit Breaker Panel**



**Tower**



**Tower**



**Tower**



**Tower Helm**



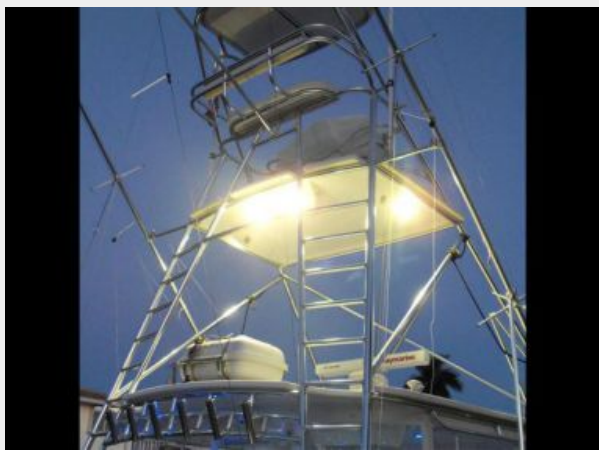
**Tower Seating**



**Cockpit From Above**



**LED Spreader Lights**



**Engine Room Entrance**



**Starboard Engine**



**Port Engine**



**Generator**



**Alternate Profile**



**Alternate Profile**



**Alternate Profile**



**Stern Shot**



**Sept. 2015 Bottom & Prop Service**



**Sept. 2015 Bottom & Prop Service**



**Sept. 2015 Bottom & Prop Service**



**Sept. 2015 Bottom & Prop Service**



# CONTACTS

---

Andrey Shestakov, leading yacht broker of the sales department of Shestakov Yacht Sales Inc. Shestakov Yacht Sales Inc., the official representative of the Miami/Fort Lauderdale FL headquarters.

## Contact details

---

Email: [andrey@shestakovyachtsales.com](mailto:andrey@shestakovyachtsales.com)

Web: [shestakovyachtsales.com/en/](http://shestakovyachtsales.com/en/)

## Telephones

---

USA: +1(954)274-4435

## Office hours

---

Monday – Saturday: **9:00 - 21:00** EDT

Sunday: **closed**

## Address

---



Harbour Towne Marina, 850 NE 3rd St,  
STE 213, Dania, FL 33004