

## CACIQUE — RYBOVICH



**Builder:** RYBOVICH

**Year Built:** 2002

**Model:** Sport Fisherman

**Price:** PRICE ON APPLICATION

**Location:** United States

**LOA:** 65' 0" (19.81m)

**Beam:** 18' 6" (5.64m)

**Max Draft:** 4' 10" (1.47m)

**Cruise Speed:** 34 Kts. (39 MPH)

**Max Speed:** 37 Kts. (43 MPH)

Our experienced yacht broker, Andrey Shestakov, will help you choose and buy a yacht that best suits your needs **CACIQUE — RYBOVICH** from our catalogue. Presently, at Shestakov Yacht Sales Inc., we have a wide variety of yachts available on our sale's list. We also work in close contact with all the big yacht manufacturers from all over the world.

If you would like to buy a yacht **CACIQUE — RYBOVICH** or would like help answering any questions concerning purchasing, selling or chartering a yacht, please call **+1(954)274-4435**

# TABLE OF CONTENTS

|                                  |    |
|----------------------------------|----|
| TABLE OF CONTENTS                | 2  |
| SPECIFICATIONS                   | 5  |
| Basic Information                | 5  |
| Dimensions                       | 5  |
| Speed, Capacities and Weight     | 5  |
| Accommodations                   | 5  |
| Hull and Deck Information        | 5  |
| Engine Information               | 6  |
| DETAILED INFORMATION             | 7  |
| Remarks                          | 7  |
| Walkthrough                      | 7  |
| Bridge Electronics               | 7  |
| Electrical                       | 8  |
| Deck                             | 8  |
| Construction Details             | 8  |
| Fishing Equipment                | 9  |
| Engine Room/Mechanical Equipment | 9  |
| Exclusions                       | 9  |
| Disclaimer                       | 10 |
| PHOTOS                           | 11 |
| Salon Forward                    | 11 |
| Salon                            | 11 |
| Salon Sofa                       | 11 |
| Salon Aft                        | 11 |
| Salon                            | 11 |
| Salon TV                         | 11 |
| Galley                           | 12 |
| Dinette                          | 12 |

|                           |    |
|---------------------------|----|
| Dinette                   | 12 |
| Companionway              | 12 |
| Master Stateroom Entrance | 13 |
| Master Stateroom          | 13 |
| Master Head               | 13 |
| Guest Stateroom           | 13 |
| Guest Head                | 14 |
| Guest Stateroom           | 14 |
| Crew Quarters             | 14 |
| Crew Head                 | 14 |
| Helm                      | 15 |
| Helm & Electronics        | 15 |
| Helm                      | 15 |
| Bridge Seating            | 15 |
| Bridge Seating & Storage  | 15 |
| Cockpit                   | 15 |
| Cockpit Controls          | 16 |
| Mezzanine                 | 16 |
| Engine Room               | 16 |
| Cockpit                   | 16 |
| Engine Room               | 16 |
| Engine Room               | 16 |
| Engine Room               | 17 |
| Profile                   | 17 |
| Profile at Dock           | 17 |
| Bow View                  | 17 |
| CONTACTS                  | 18 |
| Contact details           | 18 |
| Telephones                | 18 |

---

|              |    |
|--------------|----|
| Office hours | 18 |
| Address      | 18 |

---

# SPECIFICATIONS

---

## Basic Information

---

**Category:** Sport Fisherman

**Sub Category:** Convertible

**Model Year:** 2002

**Year Built:** 2002

**Country:** United States

**Fly Bridge:** Yes

**Cockpit:** Yes

## Dimensions

---

**LOA:** 65' 0" (19.81m)

**Beam:** 18' 6" (5.64m)

**Max Draft:** 4' 10" (1.47m)

## Speed, Capacities and Weight

---

**Cruise Speed:** 34 Kts. (39 MPH)

**Max Speed:** 37 Kts. (43 MPH)

## Accommodations

---

**Total Cabins:** 3

**Total Heads:** 3

## Hull and Deck Information

---

**Hull Material:** Wood

**Hull Configuration:** Semi Vee

---

## Engine Information

---

**Engines:** 2

**Manufacturer:** MTU

**Model:** 16V2000

**Engine Type:** Inboard

**Fuel Type:** Diesel

---

## DETAILED INFORMATION

---

### Remarks

---

**\*MAJOR \$250,000 PRICE REDUCTION\*** CACIQUE is fast and in fabulous condition throughout! She has an extremely livable layout, a stand up engine room, and all the other amenities to make her a state-of-the-art, world class offering. *\*NOT AVAILABLE TO U.S. RESIDENTS, WHILE IN U.S. WATERS\**

### Walkthrough

---

Master stateroom is forward with centerline queen berth and ensuite head with shower. There are port and starboard cedar lined hanging lockers. There are built-in drawers under the berth and in the forward bulkhead. The master stateroom entertainment package includes a 15" LCD monitor, VCR, DVD, and a CD sound system. The pedestal bed raises by means of a gas shock to access a large storage area.

Aft to port is the VIP guest stateroom with a queen berth and ensuite head with shower. There is a single cedar lined hanging locker and built-in drawer storage under the bed. The entertainment package is identical to the master stateroom.

Across to starboard are the crew quarters with stacked athwartship bunks and an ensuite head with shower. There is a single hanging locker and built-in drawers. There is also an identical entertainment package except that the monitor is 10".

In the companionway is a full size washer/dryer.

Up three steps and aft to the salon with island style galley forward and to port. Opposite is a large L-shaped dinette. Aft to starboard is the entertainment center flanked by a bar with liquor storage. Opposite to port is a large U-shaped lounge. Galley appliances included (4) Sub Zero drawer refrigerator/freezer, convection oven, 4-burner flat top electric cooktop, ice maker, and a large stainless steel sink. The built-in entertainment center has a 30" Panasonic plasma monitor and Sony DVD surround sound, CD and VCR.

The entire interior is paneled in satin finished matching teak. The drawers and cabinet doors have a raised panel treatment as does the salon overhead. The galley and head floors are teak and holly. All countertops are granite.

### Bridge Electronics

---

- Furuno FCV 1200L color sounder
- Simrad AP20 autopilot

- Furuno 72 mile color radar
- ACR spotlight
- Garmin GPSMAP 7215
- Garmin 15" 8215 GPS/chartplotter
- (2) Icom M506 VHF
- KVH Satellite TV receiver
- KVH Satellite phone

---

## Electrical

---

- (2) 27.5 kW Onan generators
- 12V & 120V systems
- Automatic battery charger
- Port & starboard Cable Masters
- Alternators on main engines and generator

---

## Deck

---

- Strataglass full enclosure
- Strataglass phone booth enclosure
- Cockpit cover
- (2) Varnished teak helm chairs
- Anchor w/300' line
- Air horn

---

## Construction Details

---

### Natural teak decks and covering boards

#### *Varnished teak:*

- Transom
- Cockpit bulkhead
- Tackle centers
- Bridge rail
- Toe rail
- Console lid
- Half round
- Bridge trim



---

## Fishing Equipment

---

- Full tower
- Cockpit freezer
- 3x Rupp Riggers
- Cockpit drink cooler
- Murray fighting chair w/rocket launcher
- Cockpit tackle storage
- Under deck fish box
- Rod holders
- Eskimo ice maker w/macerator
- Under gunnel gaff lockers - port & starboard
- Under deck bait well
- Fresh and salt water connections

---

## Engine Room/Mechanical Equipment

---

- 1500 GPD Aqua Whisper water maker
- Bow thruster
- Eskimo ice machine
- Oil change system
- 80 gallon oil reservoir
- Fuel prime pumps
- Halon automatic fire system
- Mechanical engine gauges
- Cruisair AC
- Fresh water spigot
- Automatic bilge pumps
- 20V water pump
- Delta T blowers
- Custom wet mufflers
- Stainless steel water heater
- Seawater chest
- Dripless shaft logs
- Hynautic power steering
- Engine driven crash pumps
- Trim tabs

---

## Exclusions

---

Owner's personal belongings.

## Disclaimer

---

The Company offers the details of this vessel or yacht in good faith but cannot guarantee or warrant the accuracy of this information nor warrant the condition of the vessel. A buyer should instruct his representatives, agents, or his surveyors, to investigate such details as the buyer desires validated. This vessel or yacht is offered subject to prior sale, price change, or withdrawal without notice.

# PHOTOS

**Salon Forward**



**Salon**



**Salon Sofa**



**Salon Aft**



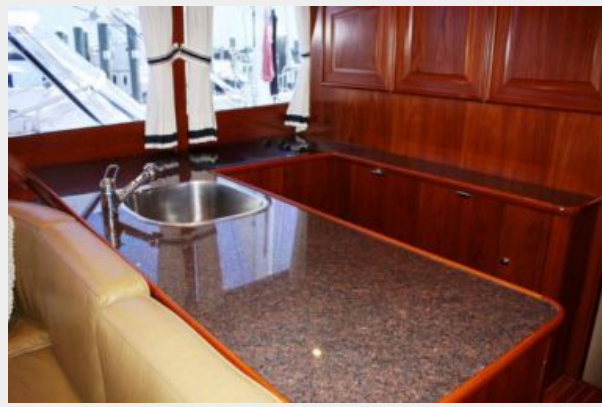
**Salon**



**Salon TV**



**Galley**



**Dinette**



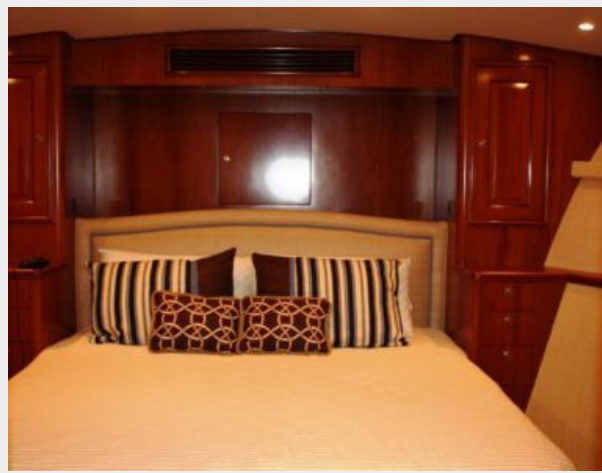
**Dinette**



**Companionway**



**Master Stateroom**



**Master Stateroom Entrance**



**Master Head**



**Guest Stateroom**





**Guest Stateroom**



**Guest Head**



**Crew Quarters**



**Crew Head**



**Helm & Electronics**



**Helm**



**Helm**



**Bridge Seating**



**Bridge Seating & Storage**



**Cockpit**



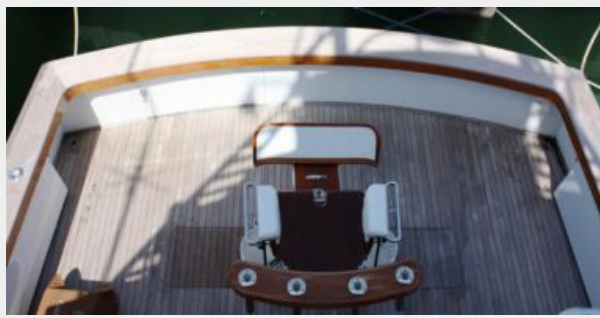
### Cockpit Controls



### Mezzanine



### Cockpit



### Engine Room



### Engine Room



### Engine Room





**Engine Room**



**Profile**



**Profile at Dock**



**Bow View**



# CONTACTS

---

Andrey Shestakov, leading yacht broker of the sales department of Shestakov Yacht Sales Inc. Shestakov Yacht Sales Inc., the official representative of the Miami/Fort Lauderdale FL headquarters.

## Contact details

---

Email: [andrey@shestakovyachtsales.com](mailto:andrey@shestakovyachtsales.com)

Web: [shestakovyachtsales.com/en/](http://shestakovyachtsales.com/en/)

## Telephones

---

USA: +1(954)274-4435

## Office hours

---

Monday – Saturday: **9:00 - 21:00** EDT

Sunday: **closed**

## Address

---



Harbour Towne Marina, 850 NE 3rd St,  
STE 213, Dania, FL 33004