

LIBERTY BELLE — MAINSHIP



Builder: MAINSHIP

Year Built: 2004

Model: Cruiser

Price: PRICE ON APPLICATION

Location: United States

LOA: 34' 0" (10.36m)

Beam: 12' 3" (3.73m)

Max Draft: 3' 3" (0.99m)

Cruise Speed: 16 Kts. (18 MPH)

Our experienced yacht broker, Andrey Shestakov, will help you choose and buy a yacht that best suits your needs **Liberty Belle — MAINSHIP** from our catalogue. Presently, at **Shestakov Yacht Sales Inc.**, we have a wide variety of yachts available on our sale's list. We also work in close contact with all the big yacht manufacturers from all over the world.

If you would like to buy a yacht **Liberty Belle — MAINSHIP** or would like help answering any questions concerning purchasing, selling or chartering a yacht, please call **+1(954)274-4435**

TABLE OF CONTENTS

TABLE OF CONTENTS	2
SPECIFICATIONS	5
Basic Information	5
Dimensions	5
Speed, Capacities and Weight	5
Hull and Deck Information	5
Engine Information	5
DETAILED INFORMATION	6
Additional Information	6
Exclusions	7
Disclaimer	7
PHOTOS	8
Underway Port 2	8
Underway Stbd Profile	8
Deck Hull Stbd	8
On lift	8
Deck Stbd forward	9
Deck Air horns	9
Deck from bow	9
Deck Bow	9
Deck Anchor Windlass	9
Deck Anchor Rode	9
Deck Port Windshield	10
Deck Center Windshield	10
Deck Stbd Windshield	10
Deck Cabin Port	10
Cockpit Enclosure	10
Deck Aft	10

Cockpit from aft	11
Cockpit Stbd	11
Cockpit Port	11
Cockpit Stb Settee Converts to berth	11
Cockpit Port Settee Converts to berth	11
Cockpit Port Forward	11
Cockpit Stbd	12
Cockpit Helm	12
Cockpit Helm Close up	12
Cockpit throttle	12
Cockpit Helm Close up	12
Cockpit Helm Close up	12
Cockpit Helm Wiring	13
Cockpit Helm Wiring	13
Cockpit Helm Wiring	13
Cockpit Chart table	13
Salon	13
Salon Stbd	13
Salon Port	14
Salon Table	14
Galley from forward	14
Galley Stove top and Microwave	14
Galley Stove Top Close up	14
Head	14
Salon Control Panels	15
Breaker Panel	15
Salon Control Panels Close up	15
Master Cabin Berth	15
Master Cabin Stbd	15

Master Cabin Port	15
Master Cabin Storage 1	16
Master Cabin Storage 2	16
Bow Thruster	16
Engine Close up	16
Engine Close up	16
Engine Compartment	16
Engine Close up	17
New Hot water heater	17
Generator	17
Engine Battery switches	17
Logo	17
CONTACTS	18
Contact details	18
Telephones	18
Office hours	18
Address	18

SPECIFICATIONS

Basic Information

Category: Cruiser

Model Year: 2004

Year Built: 2004

Country: United States

Dimensions

LOA: 34' 0" (10.36m)

Beam: 12' 3" (3.73m)

Max Draft: 3' 3" (0.99m)

Clearance: 9' 0" (2.74m)

Speed, Capacities and Weight

Cruise Speed: 16 Kts. (18 MPH)

Displacement: 16000 Pounds

Water Capacity: 70 Gallons

Holding Tank: 14 Gallons

Fuel Capacity: 250 Gallons

Hull and Deck Information

Hull Material: Fiberglass

Engine Information

Engines: 1

Manufacturer: Yanmar

Model: 6LYA-STP

Engine Type: Inboard

Fuel Type: Diesel

DETAILED INFORMATION

Additional Information

Interior

- 12,000 BTU air conditioning system (Marine Air)
- Cherry and Holly Flooring
- Ultra leather upholstery
- Carbon Monoxide Safety Alarm
- Flat screen TV in salon
- Speakers in master cabin, salon and cockpit

Galley

- Corian counter tops
- Coffee maker
- Microwave
- Norcold Refrigerator/Freezer
- Two stove top burners
- Water Heater - New stainless steel 6 gallon - 2015
- Water guage monitor in salon

Deck

- Twin Airhorns - New 2014
- Windlass - Simpson Lawrence 600 vertical windlass
- Full enclosure in excellent condition - Crystal clear 20/20 Strataglass
- Throttle Control - Morse Marine MT-3
- Magma gas grill with rod holder mount
- Cockpit settees (Sunbrella covered) convert to single berths
- Swim platform with ladder
- Hot/cold cockpit shower
- Complete cockpit enclosure - Crystal Clear 20/20 Strataglass - Excellent condition
- Venting windshields with wipers

Mechanical

- Hydraulic steering
- Oil Exchanger
- Dripless Stuffing box
- Transmission - ZF Model ZF 200. Gear ratio 3.00 - 1
- Bronze strut and rudder
- Full keel and sand shoe with full prop protection

Electrical

- Next Gen - 3.5 kw generator - Reconditioned 2014
- AC/DC Converter - 30 amp
- Batteries - New house batteries in 2013. New starter battery in 2014.
- GFCI protection all outlets
- 30 amp shore power cord - 50 feet
- New battery switches installed 2014
- Bonding system with zinc anodes
- Galvanic isolator (Pro Mariner) with monitor in salon

Exclusions

Owner's personal belongings.

Disclaimer

The Company offers the details of this vessel or yacht in good faith but cannot guarantee or warrant the accuracy of this information nor warrant the condition of the vessel. A buyer should instruct his representatives, agents, or his surveyors, to investigate such details as the buyer desires validated. This vessel or yacht is offered subject to prior sale, price change, or withdrawal without notice.

PHOTOS

Underway Stbd Profile



Underway Port 2



On lift



Deck Hull Stbd



Deck Stbd forward



Deck Air horns



Deck from bow



Deck Bow



Deck Anchor Windlass



Deck Anchor Rode



Deck Port Windshield



Deck Center Windshield



Deck Stbd Windshield



Deck Cabin Port



Cockpit Enclosure



Deck Aft



Cockpit from aft



Cockpit Stbd



Cockpit Port



Cockpit Stb Settee Converts to berth



Cockpit Port Settee Converts to berth



Cockpit Port Forward



Cockpit Stbd



Cockpit Helm



Cockpit Helm Close up



Cockpit throttle



Cockpit Helm Close up



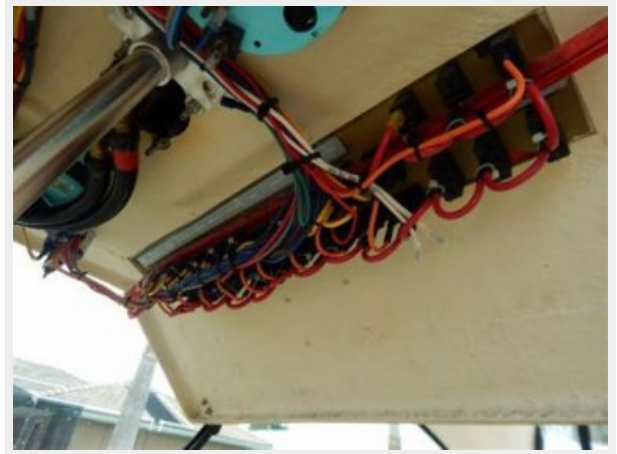
Cockpit Helm Close up



Cockpit Helm Wiring



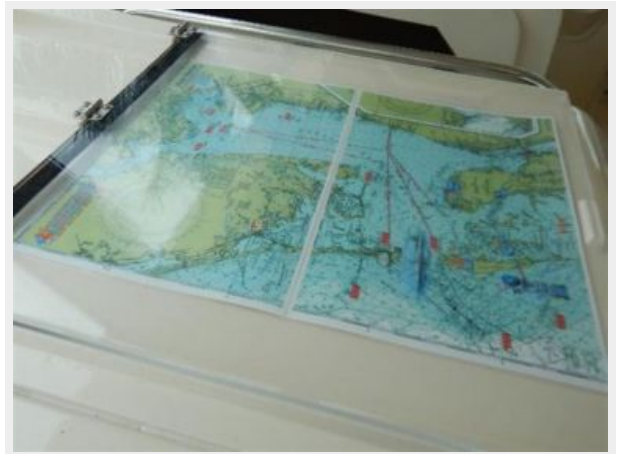
Cockpit Helm Wiring



Cockpit Helm Wiring



Cockpit Chart table



Salon



Salon Stbd



Salon Port



Salon Table



Galley from forward



Galley Stove top and Microwave



Galley Stove Top Close up



Head



Salon Control Panels



Breaker Panel



Salon Control Panels Close up



Master Cabin Berth



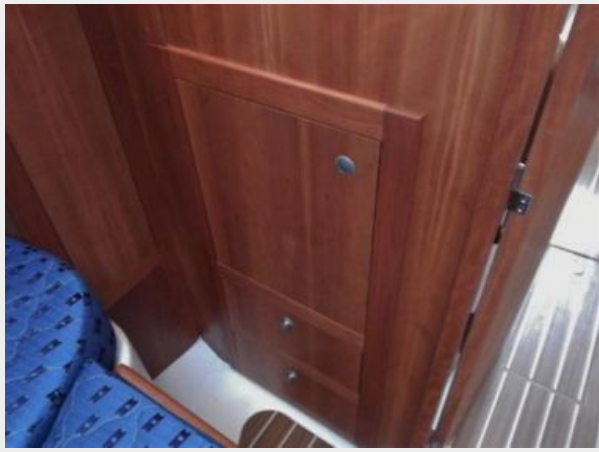
Master Cabin Port



Master Cabin Stbd



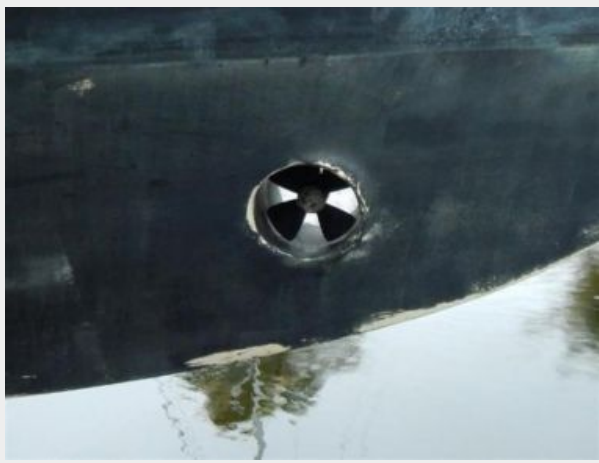
Master Cabin Storage 1



Master Cabin Storage 2



Bow Thruster



Engine Close up



Engine Close up



Engine Compartment



Engine Close up



New Hot water heater



Generator



Engine Battery switches



Logo



CONTACTS

Andrey Shestakov, leading yacht broker of the sales department of Shestakov Yacht Sales Inc. Shestakov Yacht Sales Inc., the official representative of the Miami/Fort Lauderdale FL headquarters.

Contact details

Email: andrey@shestakovyachtsales.com

Web: shestakovyachtsales.com/en/

Telephones

USA: +1(954)274-4435

Office hours

Monday – Saturday: **9:00 - 21:00** EDT

Sunday: **closed**

Address



Harbour Towne Marina, 850 NE 3rd St,
STE 213, Dania, FL 33004