

SWEET DREAMS — CARVER



Builder: CARVER

Year Built: 2002

Model: Motor Yacht

Price: PRICE ON APPLICATION

Location: United States

LOA: 57' 0" (17.37m)

Beam: 15' 4" (4.67m)

Max Draft: 4' 9" (1.45m)

Our experienced yacht broker, Andrey Shestakov, will help you choose and buy a yacht that best suits your needs **SWEET DREAMS — CARVER** from our catalogue. Presently, at Shestakov Yacht Sales Inc., we have a wide variety of yachts available on our sale's list. We also work in close contact with all the big yacht manufacturers from all over the world.

If you would like to buy a yacht **SWEET DREAMS — CARVER** or would like help answering any questions concerning purchasing, selling or chartering a yacht, please call **+1(954)274-4435**

TABLE OF CONTENTS

TABLE OF CONTENTS	2
SPECIFICATIONS	4
Basic Information	4
Dimensions	4
Speed, Capacities and Weight	4
Accommodations	4
Hull and Deck Information	4
Engine Information	4
DETAILED INFORMATION	5
Layout	5
Galley	5
Master Stateroom	6
Accommodations	6
Deck	6
Engines and generator	7
Exclusions	7
Disclaimer	7
PHOTOS	8
Manufacturer Provided Image: 570 Voyager Pilothouse	8
Manufacturer Provided Image: 570 Voyager Pilothouse	9
Manufacturer Provided Image: 570 Voyager Pilothouse	11
Manufacturer Provided Image: 570 Voyager Pilothouse	13
Manufacturer Provided Image: 570 Voyager Pilothouse	14
CONTACTS	15
Contact details	15
Telephones	15
Office hours	15
Address	15

SPECIFICATIONS

Basic Information

Category: Motor Yacht

Model Year: 2002

Year Built: 2002

Country: United States

Dimensions

LOA: 57' 0" (17.37m)

Beam: 15' 4" (4.67m)

Max Draft: 4' 9" (1.45m)

Clearance: 19' 0" (5.79m)

Speed, Capacities and Weight

Displacement: 52500 Pounds

Water Capacity: 200 Gallons

Holding Tank: 100 Gallons

Fuel Capacity: 800 Gallons

Accommodations

Total Berths: 8

Total Heads: 2

Hull and Deck Information

Hull Material: Fiberglass

Engine Information

Engines: 2

Manufacturer: Cummins

Model: QSM 11

Engine Type: Inboard

Fuel Type: Diesel

DETAILED INFORMATION

Layout

Sweet Dreams is a 2002 Carver 570 Voyager and is an impressive example of with great layout, and design. The company's goal is to build a comfortable, luxurious cruising yacht at a reasonable price, and this boat fits the profile nicely."

As you get onboard the large cockpit with transom door and molded swim platform its great yacht for entertaining and the cruising lifestyle. There are two entrances to the flybridge with fiberglass steps lead to the fly bridge and also internal steps to the fly bridge.

As you open the nice stainless steel sliding door it opens to the spacious and luxurious cherry interior salon. The galley is forward of salon and is bright and open.

The lower helm allows for driving in any weather with updated Ray marine electronics. There is a starboard pilothouse side door allows for docking or access to the bow and stern. Located the fly bridge you will find Ray marine electronics at the helm, an swivel seat, table, settee, ice maker, davit and Black bimini top.

As you walk down the curved stairway from the lower helm area are the palatial amidships master stateroom with ensuite vanity, spacious shower, and head; the luxurious VIP stateroom is located forward with pedestal queen berth and private head access; and the third stateroom has upper and lower berths.

- Nice Ultra leather tan upholstery throughout
- Full beam amidships master stateroom
- Master stateroom Queen size with cherry wood cabinetry
- Full size washer & dryer located in master
- Updated Electronics 2012
- New Flat Screen TV's
- Large Salon & Galley
- Lower Helm with Lounge and starboard side door
- Fuel Polishing System

Galley

- Wood galley flooring
- Generous storage in cherry finished wood cabinets
- Breakfast Bar w/ 4 stools
- Corian counter
- Double sink
- Sub Zero refrigerator

- Sub Zero freezer
- Convection microwave oven
- Black & Decker space maker coffee maker
- Broan trash compactor

Master Stateroom

Queen walk around berth with NEW TEMPERPEDIC Mattress.

- • HD Flat Screen and Sat TV
- • Two *Hanging lockers*
- • *Cherrywood cabinets*
- • *Concealed stack washer/dryer*
- • *AC and Heat controls*
- • *Central Vac*
- • *Spacious En suite vanity, head, with separate shower/tub*

Accommodations

VIP Forward

- Nice bedding and neutral softgoods with Island Queen with Storage drawers and *hanging closet adjoined with guest stateroom*
- *AC/Heat controls*
- *Ensuite head entrance w/ separate shower*
- *Four opening ports*
- *Day head second entrance from hallway*

Third Stateroom

- Reading light
- Over and under Bunks
- *(2) Opening ports*
- *Guest head access across hallway hanging locker adjoined w/ VIP*

Deck

- *Shore power Hook up 50 AMP*
- • *Maxwell 3500 Electric Windlass*
- • *Forward & Aft freshwater wash downs*
- • *Hot/cold shower @ transom*
- • *Storage hatches in foredeck for fenders*

- *ACR Remote search light*
- *Bow sunpad with cover*

Engines and generator

- *Cummins engine 1100 Hours 660 Hp Glendenning Cablemaster 50amp shore power*
- *Forward shore power 50amp service connection*
- *Kohler 15.5KW Genset with 1759 hours*
- *Engine & generator battery chargers*
- *Batteries*

Exclusions

Owner's personal belongings.

Disclaimer

The Company offers the details of this vessel or yacht in good faith but cannot guarantee or warrant the accuracy of this information nor warrant the condition of the vessel. A buyer should instruct his representatives, agents, or his surveyors, to investigate such details as the buyer desires validated. This vessel or yacht is offered subject to prior sale, price change, or withdrawal without notice.

PHOTOS



**Manufacturer Provided Image: 570 Voyager
Pilothouse**



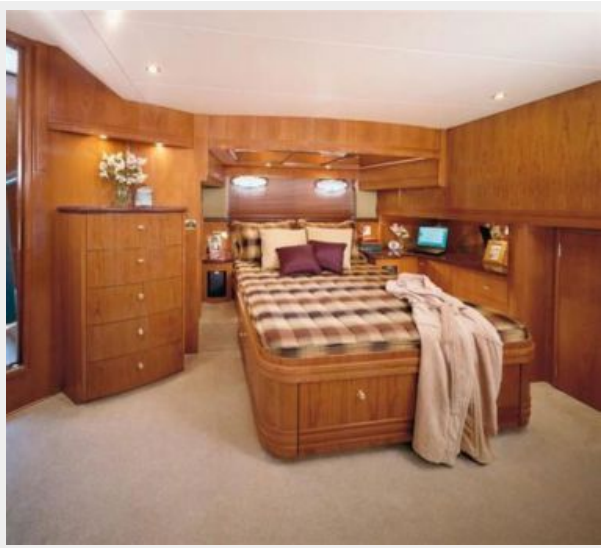


**Manufacturer Provided Image: 570 Voyager
Pilothouse**





Manufacturer Provided Image: 570 Voyager Pilothouse





Manufacturer Provided Image: 570 Voyager Pilothouse





**Manufacturer Provided Image: 570 Voyager
Pilothouse**



CONTACTS

Andrey Shestakov, leading yacht broker of the sales department of Shestakov Yacht Sales Inc. Shestakov Yacht Sales Inc., the official representative of the Miami/Fort Lauderdale FL headquarters.

Contact details

Email: andrey@shestakovyachtsales.com

Web: shestakovyachtsales.com/en/

Telephones

USA: +1(954)274-4435

Office hours

Monday – Saturday: **9:00 - 21:00** EDT

Sunday: **closed**

Address



Harbour Towne Marina, 850 NE 3rd St,
STE 213, Dania, FL 33004