

460EXP — SANLORENZO



Builder: SANLORENZO

Year Built: 2017

Model: Expedition Yacht

Price: PRICE ON APPLICATION

Location: Italy

LOA: 138' 0" (42.06m)

Beam: 30' 2" (9.19m)

Max Draft: 8' 2" (2.49m)

Cruise Speed: 11 Kts. (13 MPH)

Max Speed: 15 Kts. (17 MPH)

Our experienced yacht broker, Andrey Shestakov, will help you choose and buy a yacht that best suits your needs 460EXP — SANLORENZO from our catalogue. Presently, at Shestakov Yacht Sales Inc., we have a wide variety of yachts available on our sale's list. We also work in close contact with all the big yacht manufacturers from all over the world.

If you would like to buy a yacht 460EXP — SANLORENZO or would like help answering any questions concerning purchasing, selling or chartering a yacht, please call +1(954)274-4435

TABLE OF CONTENTS

TABLE OF CONTENTS	2
SPECIFICATIONS	4
Overview	4
Basic Information	4
Dimensions	4
Speed, Capacities and Weight	4
Accommodations	5
Hull and Deck Information	5
Engine Information	5
DETAILED INFORMATION	6
Description	6
Accommodations	6
Safety, Seaworthiness and Self-sufficiency	6
Comfort and Environmental Protection	6
Sea-life Enjoyment	6
Exclusions	7
Disclaimer	7
PHOTOS	8
PROFILE	8
LAUNCH	8
LAUNCH 2	8
LAUNCH 2	8
LAUNCH 2	8
MAIN DECK	8
MAIN DECK	9
MAIN DECK	9
MAIN SALON	9
MAIN SALON	9

UPPER DECK SALON	9
UPPER DECK SALON	9
MASTER STATEROOM	9
MASTER STATEROOM	9
VIP STATEROOM	10
VIP STATEROOM	10
TWIN STATEROOM	10
GYM	10
PILOTHOUSE	10
MAIN GALLEY	10
CREWS QUARTERS	10
LAUNDRY	10
ENGINE ROOM	11
CONTACTS	12
Contact details	12
Telephones	12
Office hours	12
Address	12

SPECIFICATIONS

Overview

The Sanlorenzo 460Exp is designed for long range cruising. She has an aluminum superstructure and steel hull with reduced draft for coastal cruising. Key features include RINA "Green Plus" certification, a beach club, interior and exterior spa pools, wellness areas and a host of additional amenities for spending private time at sea. **New construction. Please call for delivery availability.** *Sanlorenzo of the Americas provides direct access to the shipyard for customers in North America, Central America, and South America. Headquarters in Fort Lauderdale, Florida.*

Basic Information

Category: Expedition Yacht

Model Year: 2017

Year Built: 2017

Country: Italy

Fly Bridge: Yes

Cockpit: Yes

Helipad: Yes

Dimensions

LOA: 138' 0" (42.06m)

LWL: 125' 4" (38.20m)

Beam: 30' 2" (9.19m)

Max Draft: 8' 2" (2.49m)

Speed, Capacities and Weight

Cruise Speed: 11 Kts. (13 MPH)

Cruise Speed Range: 4000

Max Speed: 15 Kts. (17 MPH)

Displacement: 960000 Pounds

Gross Tonnage: 460 Pounds

Water Capacity: 2110 Gallons

Holding Tank: 2100 Gallons

Fuel Capacity: 13200 Gallons

Accommodations

Total Cabins: 6

Crew Sleeps: 7

Hull and Deck Information

Hull Material: Steel

Hull Configuration: Full Displacement

Hull Designer: Sanlorenzo

Exterior Designer: Francesco Pazowski

Interior Designer: Sanlorenzo

Engine Information

Engines: 2

Manufacturer: Caterpillar

Model: C32 ACERT

Engine Type: Inboard

Fuel Type: Diesel

DETAILED INFORMATION

Description

The Sanlorenzo 460Exp is designed for long range cruising. She has an aluminum superstructure and steel hull with reduced draft for coastal cruising. Key features include RINA "Green Plus" certification, a beach club, interior and exterior spa pools, wellness areas and a host of additional amenities for spending private time at sea.

Accommodations

- Sleeps 10-12 guests and 6-10 crew
- Upper Deck (Pilothouse) – Captain's Cabin
- Main Deck – Master Stateroom
- Lower Deck – 2x VIP Staterooms and 2x Twin Guest Staterooms, Convertible VIP/Crew Cabin and 3x Crew Cabins

Safety, Seaworthiness and Self-sufficiency

- MCA compliance
- Steel construction
- Ice class
- Enhanced stability in all sea conditions
- Long ocean cruising range
- Heavy duty engine rating
- Low-fuel and electrical consumption

Comfort and Environmental Protection

- Green Plus classification
- Extended stay at sea in complete zero-emission
- Low-noise and vibrations in all operating conditions
- Fin stabilization underway and at anchor
- Generous owner/guest cabins and accommodation spaces
- Wellness center and pool enjoyable in all operating conditions
- Generous refrigerated and frozen provision capacity
- Garbage compactor and large cold storage

Sea-life Enjoyment

- Generous multi-purpose beach club
- Large on-deck stowage capacity of wide range of water sport toys and vehicles (submarines, tenders, fishing and sailing boat, jet skies, kayaks canoes, cars and motorcycle)
- Flexible crane arrangement
- Diving equipment facilities
- Off-shore fishing facilities

Exclusions

Owner's personal belongings.

Disclaimer

The Company offers the details of this vessel or yacht in good faith but cannot guarantee or warrant the accuracy of this information nor warrant the condition of the vessel. A buyer should instruct his representatives, agents, or his surveyors, to investigate such details as the buyer desires validated. This vessel or yacht is offered subject to prior sale, price change, or withdrawal without notice.

PHOTOS

PROFILE



LAUNCH



LAUNCH 2



LAUNCH 2



LAUNCH 2



MAIN DECK



MAIN DECK



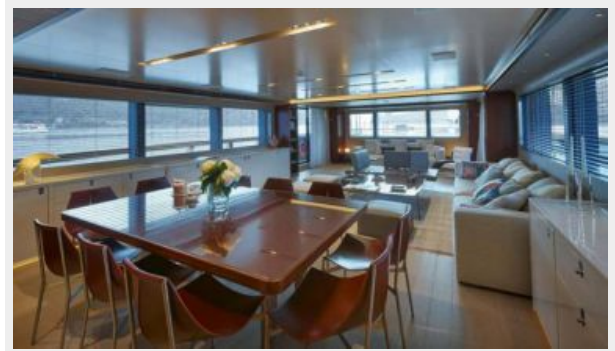
MAIN DECK



MAIN SALON



MAIN SALON



UPPER DECK SALON



UPPER DECK SALON



MASTER STATEROOM



MASTER STATEROOM



VIP STATEROOM



VIP STATEROOM



TWIN STATEROOM



GYM



PILOTHOUSE



MAIN GALLEY



CREWS QUARTERS



LAUNDRY



ENGINE ROOM



CONTACTS

Andrey Shestakov, leading yacht broker of the sales department of Shestakov Yacht Sales Inc. Shestakov Yacht Sales Inc., the official representative of the Miami/Fort Lauderdale FL headquarters.

Contact details

Email: andrey@shestakovyachtsales.com

Web: shestakovyachtsales.com/en/

Telephones

USA: +1(954)274-4435

Office hours

Monday – Saturday: **9:00 - 21:00** EDT

Sunday: **closed**

Address



Harbour Towne Marina, 850 NE 3rd St,
STE 213, Dania, FL 33004