

## BUCKET LIST — CARVER



**Судостроитель:** CARVER

**Год постройки:** 2007

**Модель:** Моторная яхта

**Цена:** ЦЕНА ЯХТЫ ПО ЗАПРОСУ

**Местонахождение:** United States

**Длина общая:** 42' 0" (12.80m)

**Ширина:** 13' 11" (4.24m)

**Мин. осадка:** 3' 8" (1.12m)

Купить **Bucket List — CARVER** а также выбрать подходящую вам яхту из нашего каталога яхт вам поможет опытный яхтенный брокер Андрей Шестаков. На сегодняшний день компания **Shestakov Yacht Sales Inc.** имеет большое количество яхт в собственном списке продаж, а также тесно сотрудничает со всеми крупными яхтенными производителями по всему миру.

Для того чтобы купить яхту **Bucket List — CARVER** а также проконсультироваться по любому вопросу связанному с покупкой, продажей, чартером яхт позвоните по телефону **+7(918)465-66-44**.

# ОГЛАВЛЕНИЕ

---

|                               |    |
|-------------------------------|----|
| ОГЛАВЛЕНИЕ                    | 2  |
| ХАРАКТЕРИСТИКИ                | 3  |
| Обзор                         | 3  |
| Основная информация           | 5  |
| Размеры                       | 5  |
| Скорость, вместимость и масса | 6  |
| Размещение                    | 6  |
| Корпус и палуба               | 6  |
| Информация о двигателе        | 6  |
| ФОТОГРАФИИ                    | 7  |
| КОНТАКТЫ                      | 22 |
| Контактная информация         | 22 |
| Телефоны                      | 22 |
| Время работы                  | 22 |
| Адрес                         | 22 |

# ХАРАКТЕРИСТИКИ

## Обзор

*This **Exceptional 2007 Carver Super Sport** has lived her life in **fresh water** until recently. This vessel is equipped with the **optional hardtop** which was an **18k option**. The interior of this vessel is **luxurious** and **climate controlled** with a **Master Queen** and a double Staterooms. The Master is equipped with a **separate head and shower** with the Guest Stateroom having it's own bathroom with shower across the passageway. The **Volvo IPS propulsion system** is **revolutionary** in that the operator can make the vessel **move in any direction** simply by pushing a joy stick that way. She can even **move sideways**. With the **twin 370 h.p. Volvo IPS 500 diesel engines** this **Carver Super Sport** can cruise at **26 kts. (30 mph)**. With the exhaust exiting below the waterline the noise level at cruise is very quiet at **only 72 decibels**. **Boat Name Bucket List Dimensions LOA: 43 ft 7 in Beam: 13 ft 11 in Minimum Draft: 3 ft 8 in Bridge Clearance: 19 ft 5 in Headroom: 6 ft 6 in Dry Weight: 33650 lbs Engines Engine 1: Engine Brand: Volvo Penta Year Built: 2007 Engine Model: IPS-500 Engine Type: Inboard Engine/Fuel Type: Diesel Location: Starboard Engine Hours: 580 Drive Type: Pod Drive Engine Power: 370 HP Engine 2: Engine Brand: Volvo Penta Year Built: 2007 Engine Model: IPS-500 Engine Type: Inboard Engine/Fuel Type: Diesel Location: Port Engine Hours: 580 Drive Type: Pod Drive Engine Power: 370 HP Tanks Fresh Water Tanks: (90 Gallons) Fuel Tanks: Aluminum (400 Gallons) Holding Tanks: (50 Gallons) Accommodations Number of double berths: 2 Number of heads: 2 Electronics CD player - Clarion CD And Satellite TV set - Two Flat Screen TV's One In Salon & A Flip Down In The Master Stateroom Plotter - Northstar 6100i Integrated Unit GPS - Northstar 6100i Integrated Unit Log-speedometer - Northstar 6100i Integrated Unit Cockpit speakers - Clarion Compass - Rithie Illuminated Magnetic Compass VHF - Standard Horizon Matrix With Weather & Distress Navigation center - Northstar 6100i Integrated Unit Wind speed and direction - Northstar 6100i Integrated Unit Radio - Clarion Depthsounder - Northstar Explorer D310 Inside Equipment Electric bilge pump - Three Rule 1500 gph Electric head - Two Vacu-Flush Toilets Oven - Tappan Convection Grill/Microwave Washing machine - Malber Full Size Washer & Dryer Located Below Galley Sole Battery charger - Charles 60amp & 10amp Microwave oven - Tappan Microwave/Convection Grill Heating - 3-Zone With Reverse Cycle Heat Air conditioning - 3-Zone With Reverse Cycle Heat Hot water - 11 gal. Water Heater Refrigerator - Nova-Cool Refrigerator Freezer Electrical Equipment Generator - Kohler 10kw with 220 hrs. Shore power inlet - Two Inlets 50amp Outside Equipment/Extras Davits - Weaver Type Snap Davit Outboard engine brackets - Located In Cockpit Swimming ladder - Integrated In Swim Platform Cockpit shower - Hot And Cold Tender - 8' Hard Shell Tender Covers Bimini Top - Optional Hardtop With Canvas Side Curtains***

## Carver Yachts 42 Super Sport Walkthrough

First impressions of this Carver 42 Super Sport are those of a Clean, well cared for vessel. All

topsides are waxed and Gleaming. Upon stepping aboard the swim platform and entering The transom door, one is faced with a roomy well laid-out cockpit with great shade from the overhang. The curved stairwells to port and starboard are an elegant touch. Located here are Audio system controls, overhang speakers, line stowage and a transom mounted hot & cold shower as well as the fresh water washdown outlet. On through glass and screened sliding doors is the Main Salon. This comfort controlled space is color coordinated with beautiful cherry woods and window treatments that accentuate the earth tones of the furnishings. Here you will find a large flat screen television, plush sofa, barrel chair as well as the integrated galley and settee dining area. The television can be viewed anywhere in this space. The galley is equipped with a two burner flat surface cooktop, microwave convection grill unit and a double stainless steel sink. There is a Black & Decker coffee maker located up and out of the way and a Nova Cool refrigerator Freezer with stainless finish. Keeping with the same color coordination, two steps down and forward are the Staterooms and bathrooms with the Master being all the way forward. Here you have a very cozy, but roomy Stateroom with an easy to make up Queen berth, flip down flat screen television with plenty of storage above and below the berth with a lighted, cedar lined hanging closet. To port is a stand alone shower room with built in seat and to starboard is the Vacuflush head and sink room. The Guest Stateroom is just aft and starboard with a double berth and chest of drawers. Across to port is a roomy combination circular shower and Vacuflush head room. Moving back aft to the cockpit and up the port side circular staircase is a very large Flybridge. Here is the vessels Space-Age control console, wet-bar/refrigerator service and a very large "L" shaped settee with dining table. The bow of the vessel can be accessed either port or starboard up one of the circular staircases. Mounted are sturdy handrails and handholds leading all the way to the bow. Here is the ground tackle consisting of the 35 lb stainless Plow anchor, anchor windlass and 150' of chain rode located in a below deck hatch. Foot controls are here for operating the windlass which can be operated remotely from the bridge as well. Another washdown outlet is here and the searchlight which is operated from the bridge.

#### SOME INTERESTING SPECIFICATIONS SOURCED FROM MANUFACTURER:

**CONSTRUCTION** \* Cherry wood bulkheads, cabinetry, trim & doors throughout cabin. \* Fabricated aluminum floor frames with stainless steel stanchions. \* Structural engine mountings. Reinforced stringer mountings with gusseted angle steel plates. \* Solid fiberglass hull bottoms with Knytex substrates & vinylester barrier coat. \* Tinted, tempered safety glass frameless window systems. \* Unitized deck, cockpit & cabintop construction with integral aluminum truss reinforcement in cabintop structure.

**MECHANICAL** \* Engine oil change system. \* Three zone air conditioning with reverse cycle heat. \* Optional Volvo IPS-500 370 hp diesel engines with joystick (POD) docking system. \* Fuel tanks are welded 5052 aluminum. \* Trim tabs are stainless steel.

**ELECTRICAL** \* AC/DC distribution panels with magnetic circuit breakers & integral bilge blower controls. AC&DC voltmeters; AC&DC ammeters. \* Kohler 10 kw diesel generator with 220 hrs. \* Ground fault circuit breakers on all electrical outlets. \* Two

shore power connections 50amp. \* Wiring system is tinned copper strand wire which is harnessed, color coded, labeled and meets or exceeds ABYC standards.

**WATER AND HOLDING TANKS** \* Pressurized 12 volt fresh water system with large capacity filter \* Fresh water storage tank is polyethylene. \* Fresh water tank level monitor. \* Shore water connection. \* Shower sump pump automatic/manual. \* Waste holding tank with level monitor filtered vent and dockside pumpout. \* Water heater 11 gal.

**SAFETY & NAVIGATION** \* 65-5-5-5 marine grade bronze seacocks for all through hulls. \* Two bilge high water alarms. \* Three bilge pumps rated at 1500 gph. \* CO detectors in Salon & Staterooms. \* Engine alarms for high temp. and oil pressure \* Horn is 12volt trumpet type. \* Internal bonding system. \* Navigation lights (COLREGS)

**DECKS** \* 12" & 10" stainless steel cletes. \* Bow rails are 1" OD welded stainless steel. \* Bow rail stanchions are double welded (inside and out) stainless steel mounted to aluminum backing plates laminated into the deck. \* Deck toe rails. \* Grab rail is stainless steel mounted over cabin windows running the length of the cabin. \* Over the stern anchor roller. \* Rub rail molding with heavy duty stainless steel inserts.

**BOARDING PLATFORM** \* 43.42 sq. ft. and is integral to hull & deck. \* Boarding ladder is telescoping and conceals in boarding platform. \* Grab rail above boarding ladder is stainless steel.

**COCKPIT** \* Cockpit is 49.9 approximate sq. ft. \* Lighting with three halogen on overhang and six recessed courtesy with exterior mounted switch.

**ENGINE ROOM** \* Bilges coated with white low VOC gelcoat. \* Bulkheads laminated to hull sides and stringers. \* Insulation has acoustical and thermal vinyl vapor barrier. \* Halogen lighting x6.

## Основная информация

**Тип судна:** Моторная яхта

**Модельный год:** 2007

**Год постройки:** 2007

**Страна:** United States

## Размеры

**Длина общая:** 42' 0" (12.80m)

**Ширина:** 13' 11" (4.24m)

**Мин. осадка:** 3' 8" (1.12m)

**Трапы:** 19' 5" (5.92m)

---

## Скорость, вместимость и масса

---

**Водоизмещение:** 33650 Pounds

**Вместимость воды:** 90 Gallons

**Вместимость сточного бака:** 50 Gallons

**Объем топливного бака:** 400 Gallons

---

## Размещение

---

**Всего кают:** 2

---

## Корпус и палуба

---

**Материал корпуса:** Fiberglass

---

## Информация о двигателе

---

**Двигатели:** 2

**Производитель:** Volvo Penta

**Модель:** IPS-500

**Тип двигателя:** Inboard

**Тип топлива:** Diesel

# ФОТОГРАФИИ



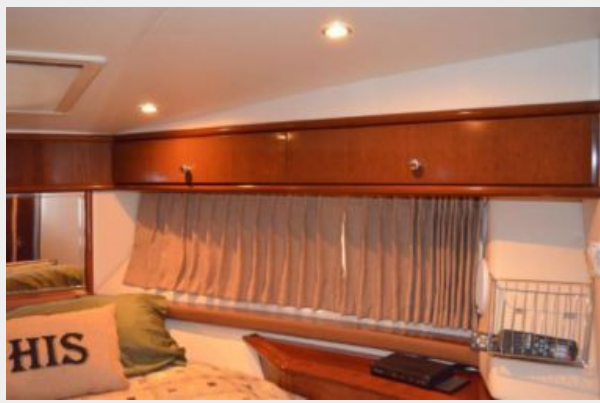


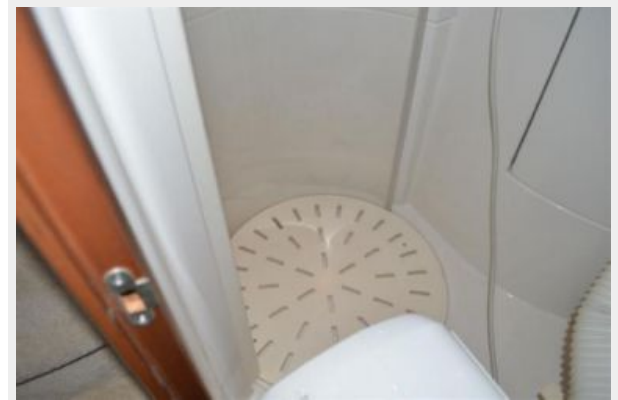




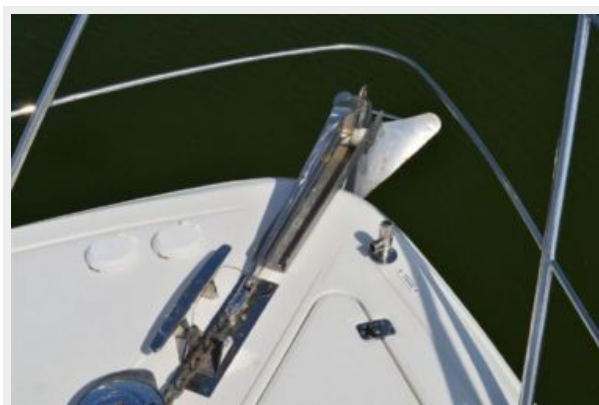


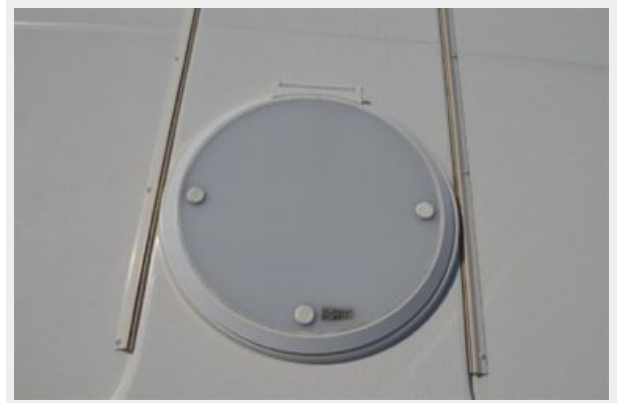
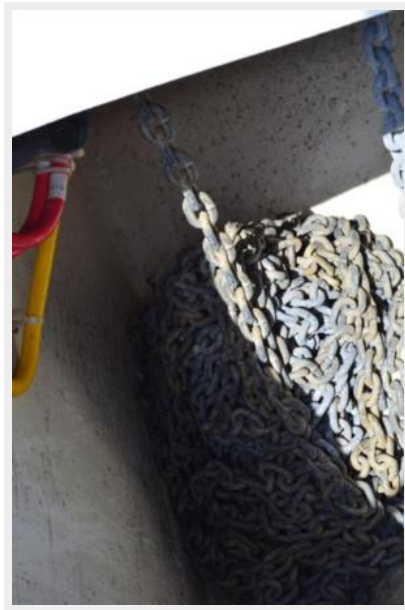
























# КОНТАКТЫ

---

Андрей Шестаков (Andrey Shestakov) – ведущий яхтенный брокер отдела продаж яхт и судов компании Shestakov Yacht Sales Inc. Официальный представитель Shestakov Yacht Sales Inc. для русскоговорящих клиентов в центральном офисе компании в Майами/Форт Лодердейл/Флорида/США.

## Контактная информация

---

Email: [andrey@shestakovyachtsales.com](mailto:andrey@shestakovyachtsales.com)

Web: [shestakovyachtsales.com](http://shestakovyachtsales.com)

## Телефоны

---

Краснодарский край: **+7(918)465-66-44**

США, Майами, Флорида: **+1(954)274-4435**

## Время работы

---

Понедельник – Суббота: **9:00 - 21:00**  
EDT

Воскресенье: **Закрито**

## Адрес

---



Harbour Towne Marina, 850 NE 3rd St,  
STE 213, Dania, FL 33004