

CAROLINA — MAINSHIP



Судостроитель: MAINSHIP

Год постройки: 1984

Модель: Траулер

Цена: **ЦЕНА ЯХТЫ ПО ЗАПРОСУ**

Местонахождение: United States

Длина общая: 34' 0" (10.36m)

Ширина: 11' 11" (3.63m)

Мин. осадка: 2' 10" (0.86m)

Купить **Carolina — MAINSHIP** а также выбрать подходящую вам яхту из нашего каталога яхт вам поможет опытный яхтенный брокер Андрей Шестаков. На сегодняшний день компания **Shestakov Yacht Sales Inc.** имеет большое количество яхт в собственном списке продаж, а также тесно сотрудничает со всеми крупными яхтенными производителями по всему миру.

Для того чтобы купить яхту **Carolina — MAINSHIP** а также проконсультироваться по любому вопросу связанному с покупкой, продажей, чартером яхт позвоните по телефону **+7(918)465-66-44**.

ОГЛАВЛЕНИЕ

ОГЛАВЛЕНИЕ	2
ХАРАКТЕРИСТИКИ	3
Обзор	3
Основная информация	10
Размеры	10
Скорость, вместимость и масса	10
Размещение	10
Корпус и палуба	10
Информация о двигателе	11
ФОТОГРАФИИ	12
КОНТАКТЫ	16
Контактная информация	16
Телефоны	16
Время работы	16
Адрес	16

ХАРАКТЕРИСТИКИ

Обзор

Best of the 1980s era Mainship trawlers on the market! This roomy trawler remains a favorite for couples moving up or down or beginning the trawler cruising experience. You'll want to see this especially nice, well-equipped, clean, good-looking model for your comfortable and economical cruising and liveaboard lifestyle.

Enjoy this classic Mainship hull design with 360 degree flybridge view, upper and very functional lower helm at a bargain price and economical to cruise. Owner cruises 7-7 1/2 knots at 1500-1600 rpm consuming 1 1/2-2 gallons per hour diesel fuel. Easy engine and generator access through salon floor hatches.

Lots of exterior and interior social space to entertain or just relax in cockpit, on bridge or in salon. Roomy salon has sleeper sofa, roomy desk, and lots of cabinet storage. Galley is fully equipped with propane stove, deep sink, refrigerator, microwave oven, lots of countertop and storage cabinets and drawers. Master suite forward has large queen size v-berth with filler cushion, and plenty of storage in hanging lockers, drawers, shelves and cabinets. Head to starboard of galley has large moulded vanity and sink with storage above and below, electric marine toilet, and full walk-in shower with glass door.

This Mainship III is nicely decorated with subtle tropical colors, clean and ready for your next cruise! Please review photos and full specifications for more details. **Boat Name** Carolina
Dimensions LOA: 34 ft 0 in Beam: 11 ft 11 in Minimum Draft: 2 ft 10 in Displacement: 14000 lbs
Bridge Clearance: 18 ft 0 in Headroom: 6 ft 3 in **Engines** Engine 1: Engine Brand: Perkins Year Built: 1984 Engine Model: Turbo Engine Type: Inboard Engine/Fuel Type: Diesel Engine Hours: 3080 Drive Type: Direct Drive Engine Power: 200 HP **Tanks** Fresh Water Tanks: 3 Plastic (120 Gallons) Fuel Tanks: Aluminum (180 Gallons) Holding Tanks: (25 Gallons)

Walk through

Admire this Mainship III shiny repainted deck and topsides as you board at aft cockpit, holding sturdy stainless steel grabrail while you step down 2 steps on slanted ladder. Notice roomy cockpit for socializing with friends or just relaxing at anchor, dock or while cruising. From cockpit, ascend 6 slanted steps with grabrails to flybridge. Here you'll admire the comfortable center helm station and chair with 2 additional chairs, one on each side. The 360 degree view from helm and all instruments in view and reach of captain's chair makes this highly desirable for any captain. Look over the canvas bimini above and fully enclosed isinglass on all the sides to appreciate this year round functional upper helm and entertainment area.

As you step down from bridge to cockpit, notice the heavy duty Ocean Marine dinghy davit system at transom. You'll appreciate the full size transom door and swim platform with ladder for boarding your dinghy, a floating dock, or going for a swim.

Walk along the side decks to appreciate the full size SS rails along side and bow and inside grab rails at cabin and doghouse as you proceed forward. This deck plan is ideal for safe docking, line handling and anchoring. Notice the fender holders conveniently located on each bow side.

Return along side deck to aft cockpit and enter the salon through sliding glass door. You'll appreciate the subtle tropical decor and parquet sole. The roomy salon with sleeper sofa and table with folding leaves to port has room for additional chairs. The lower helm in forward starboard salon area is very functional with good visibility. Note the very convenient V-shaped desk to port that also works as a serving counter from the galley down 2 steps from salon. Engine hatches are easily raised without moving the sofa.

Move forward from salon down 2 steps to large galley on port side. Notice how functional this U-shaped layout is with all the desired galley equipment, lots of countertop and storage space.

Move to starboard from galley to observe the head with large vanity, cabinets, and electric marine toilet. You must step through the glass door to the walk-in shower!!

From the head, move forward to the master suite. The matching stepstool raises you to the queen v-berth with filler cushion. Notice the lovely custom coverlet, pillows and linens. Look in the hanging lockers and cabinets to appreciate the locker and shelf storage space.

Accommodations

This Mainship classic sedan flybridge design is a favorite for cruising couples because of the roomy accommodations inside the cabins and outside on aft cockpit and bridge; upper and lower helm stations, easy deck plan for handling lines, rafting up with friends, anchoring, boarding dinghy and swimming; classic hull design for smooth and economical cruising.

Along with airconditioning powered by generator or dockside power, this Mainship III has great flow through ventilation. Notice the large opening windows in salon; side ports with rainshields in galley, head and master suite; solar fan, and small DC fans throughout interior.

The roomy salon with parquet sole is tastefully decorated with subtle tropical theme of bamboo and palm. The double sleeper sofa to port does not block access engine under floor hatches. Movable table with 2 folding leaves makes a social area to entertain 6 or more. Cabinet storage and shelf along starboard side are handy for easy access. V-shaped desk mounted forward of sofa doubles as serving counter from galley.

Head is down 2 steps from salon to starboard of galley and aft of master suite. You'll appreciate the large vanity counterspace and moulded sink. The walk-in shower with glass door enclosure is a real favorite for this model.

Master suite is forward with queen size v-berth and filler cushion. You'll love the amount of storage here, with hanging lockers, drawers and lots of shelves above and below queen berth - especially large storage under v-berth with access through centerline door.

SALON

- Tropical decorative theme with palm and bamboo colors, parquet floor
- Draperies cover aft sliding glass entry door and salon side windows
- Double sleeper sofa in salon
- Salon movable table with folding leaves
- V-shaped desk with storage cabinets doubles as galley serving counter
- Lower helm to starboard
- Textilene windshield cover
- Large opening salon windows
- Opening side ports with rainshields in galley, head and master
- 6' 3" headroom
- 4 cabinets starboard with shelf above
- Small table with lamp aside sofa
- Bookshelf under helm

MASTER SUITE

- Queen size v-berth with filler cushion
- Custom coverlet, pillows and linens
- 2 hanging lockers - one has 3 shelves
- 3 large drawers under berth
- 2 cabinets under berth - one with shelves
- 2 opening side ports with rainshields
- Bomar new overhead hatch with sunblock and screen covers
- 2 small DC fans
- Privacy door

HEAD

- Private enclosed bathroom

- Large vanity counter with large moulded sink
- Storage cabinets under and over vanity
- Raritan electric marine toilet
- Opening side port with rainshield
- Walk-in shower with glass door enclosure
- Wand shower faucet
- 3 towel racks

Galley

Every cook will love this Mainship's very nice galley layout with opening port, solar fan and large amount of tiled countertop workspace. Lots of storage room in cabinets above counter and below, and drawers below. Galley is fully equipped for a gourmet chef and casual cook to prepare nutritious meals and snacks. Deep sink, 2 burner covered propane stove, toaster oven, coffeemaker and below counter refrigerator/freezer.

- Galley 2 steps down amidship with good ventilation and lighting
- Long tiled countertop workspace
- Lots of cabinet storage above and below counter
- Wedgewood covered 2 burner propane stove
- Norcold under counter refrigerator freezer
- House Home microwave oven
- Hamilton Beach toaster and convection oven
- Gevalia coffeemaker

Electronics

BRIDGE HELM is fully equipped with electronics within captain's easy sight and reach at the helm: color chartplotter, radar, fishfinder, VHF, autopilot, depth finder, compass, AM/FM/CD remote control, compass.

- Garmin 2010 color chartplotter with southwest FL and southeast FL/Bahamas chips

- Raymarine ST6001 autopilot with rudder indicator
- Furuno radar with 8-tone black and white display
- Humminbird Matrix fishing system fishfinder
- Standard Horizon Quest-X GX1500S VHF with DSC
- Plastimo Offshore 105 5" floating compass
- Moor depth monitor
- Kenwood AM/FM/CD remote control and 2 speakers

LOWER HELM

- Garmin 2010 color chartplotter with southwest FL and southeast FL/Bahamas chips (usable at upper and lower helm stations)
- Standard Horizon remote VHF
- Ritchie 3" floating compass
- Uniden depth finder
- Raycor fuel filter pressure gauge
- Kenwood AM/FM/CD radio with 2 speakers (4 total speakers, 2 on bridge, 2 in salon)
- Vizio flat screen TV
- Amplified marine TV antenna on radar arch receives HD stations over the air
- DVD player in salon cabinet
- BOAT US brass clock

Electrical

DC current:

- DC electrical panel at lower helm
- House battery bank of 4 golf cart wet cells
- Group 27 deep cycle as generator starting battery
- Balmar 100 amp alternator
- Xantrex Freedom battery charger and 1500w inverter
- Xantrex Link 1000 battery status monitor at lower helm

AC current:

- AC electrical panel at lower helm
- Westerbeke 4kw generator with 1530 engine hours
- Xantrex Freedom 1500 watt inverter
- AC voltmeter at lower helm

Engines and Mechanical

- Reliable and economical Perkins 200 hp diesel turbo engine with 3080 engine hours
- Transmission rebuilt 2011
- Westerbeke 4.4WMD 4.4kw diesel generator with 1530 engine hours rebuilt 2013
- Pressurized water system
- 4 fresh water tanks, 2 forward, 2 aft, connected by manifold
- Hot water heater
- Raritan electric marine toilet
- Ocean Marine dinghy davits
- Solar fan in galley area
- Several DC powered fans throughout interior

Deck and Hull

Enjoy social space in roomy aft cockpit and aft area of flybridge. Move easily around decks aft, side and forward inside stainless steel rails and with handrails along sides and foredeck. Dinghy davit system is sturdy, and easy to operate. Hull is clean, and topsides are repainted and shiny. Note the radar arch replaced the traditional center radar pole usually seen on Mainships of this era. Owners installed solar fan for galley and head companionway in old radar pole location.

- Repainted topsides and decks
- Roomy aft cockpit
- Comfortable centerline upper helm seat
- 2 fixed comfortable chairs aside upper helm seat
- Roomy flybridge for additional chairs and folding table

- Bimini and fully enclosed isinglass in good condition
- Slanted steps with siderails ease climb to bridge from aft cockpit
- Radar arch with radar replaced traditional radar pole mount
- SS high bow and side rails
- SS grab rails alongside cockpit, cabin and doghouse
- 2 step slanted ladder for easy boarding into cockpit from port or starboard
- Bow pulpit holds Fortress and Delta anchors attached to 40' chain and rode
- Bow fender holders with 4 large fenders
- Ocean Marine davit system
- Transom door for easy access to swim platform
- Attached swim platform
- Folding swim ladder attached to swim platform
- Heavy duty cleats aft with hausepipes, forward, and abeam
- Rainshield covers on side ports to cabins
- Textilene windshield snap-on covers
- 2 tank propane locker in aft cockpit portside
- Fuel tank access from aft cockpit center locker

Broker's Comments

Best of the 1980s era Mainship trawlers on the market! This roomy trawler remains a favorite for couples moving up or down or beginning the trawler cruising experience. You'll want to see this especially nice, well-equipped, clean, good-looking model for your comfortable and economical cruising and liveaboard lifestyle.

Enjoy this classic Mainship hull design with 360 degree flybridge view, upper and very functional lower helm at a bargain price and economical to cruise. Owner cruises 7-7.5 knots at 1500-1600 rpm consuming 1 1/2-2 gallons per hour diesel fuel. Easy engine and generator access through salon sole hatches.

Lots of exterior and interior social space to entertain or just relax in cockpit, on bridge or in salon. Roomy salon has sleeper sofa, roomy desk, and lots of cabinet storage. Galley is fully equipped with propane stove, deep sink, refrigerator, microwave oven, lots of countertop and storage

cabinets and drawers. Master suite forward has large queen size v-berth with filler cushion, and plenty of storage in hanging lockers, drawers, shelves and cabinets. Head to starboard of galley has large moulded vanity and sink with storage above and below, electric marine toilet, and full walk-in shower with glass door.

This Mainship III is nicely decorated with subtle tropical colors, clean and ready for your next cruise!

Please note personal items excluded.

Основная информация

Тип судна: Траулер

Модельный год: 1984

Год постройки: 1984

Страна: United States

Размеры

Длина общая: 34' 0" (10.36m)

Ширина: 11' 11" (3.63m)

Мин. осадка: 2' 10" (0.86m)

Трапы: 18' 0" (5.49m)

Скорость, вместимость и масса

Водоизмещение: 14000 Pounds

Размещение

Всего кают: 1

Корпус и палуба

Материал корпуса: Fiberglass

Информация о двигателе

Двигатели: 1

Производитель: Perkins

Модель: Turbo

Тип двигателя: Inboard

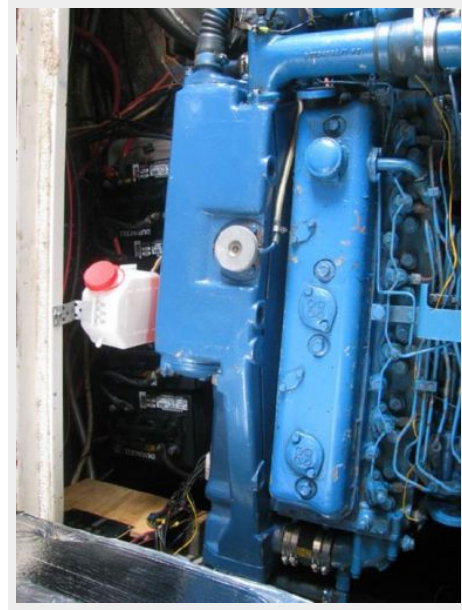
Тип топлива: Diesel

ФОТОГРАФИИ









КОНТАКТЫ

Андрей Шестаков (Andrey Shestakov) – ведущий яхтенный брокер отдела продаж яхт и судов компании Shestakov Yacht Sales Inc. Официальный представитель Shestakov Yacht Sales Inc. для русскоговорящих клиентов в центральном офисе компании в Майами/Форт Лодердейл/Флорида/США.

Контактная информация

Email: **andrey@shestakovyachtsales.com**

Web: shestakovyachtsales.com

Телефоны

Краснодарский край: **+7(918)465-66-44**

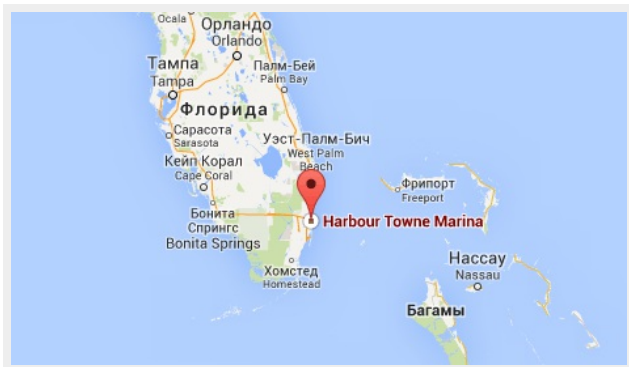
США, Майами, Флорида: **+1(954)274-4435**

Время работы

Понедельник – Суббота: **9:00 - 21:00**
EDT

Воскресенье: **Закрито**

Адрес



Harbour Towne Marina, 850 NE 3rd St,
STE 213, Dania, FL 33004