

MISS BEHAVIN — SUNSEEKER



Builder: SUNSEEKER

Year Built: 2004

Model: Cruiser

Price: PRICE ON APPLICATION

Location: United States

LOA: 46' 0" (14.02m)

Beam: 13' 9" (4.19m)

Max Draft: 3' 10" (1.17m)

Our experienced yacht broker, Andrey Shestakov, will help you choose and buy a yacht that best suits your needs **Miss Behavin — SUNSEEKER** from our catalogue. Presently, at Shestakov Yacht Sales Inc., we have a wide variety of yachts available on our sale's list. We also work in close contact with all the big yacht manufacturers from all over the world.

If you would like to buy a yacht **Miss Behavin — SUNSEEKER** or would like help answering any questions concerning purchasing, selling or chartering a yacht, please call **+1(954)274-4435**

TABLE OF CONTENTS

TABLE OF CONTENTS	2
SPECIFICATIONS	3
Overview	3
Basic Information	3
Dimensions	3
Speed, Capacities and Weight	3
Accommodations	3
Hull and Deck Information	3
Engine Information	4
DETAILED INFORMATION	5
Cockpit/Helm	5
Galley	5
Salon	5
Master Stateroom	6
Guest Stateroom	6
Electrical	6
Mechanical	7
Exclusions	7
Disclaimer	7
PHOTOS	8
CONTACTS	13
Contact details	13
Telephones	13
Office hours	13
Address	13

SPECIFICATIONS

Overview

This 46 Portofino has been loved and it shows. She is a perfect sized boat for someone who wants to cruise around or head to the islands.

Basic Information

Category: Cruiser

Model Year: 2004

Year Built: 2004

Country: United States

Dimensions

LOA: 46' 0" (14.02m)

Beam: 13' 9" (4.19m)

Max Draft: 3' 10" (1.17m)

Speed, Capacities and Weight

Displacement: 29000 Pounds

Water Capacity: 99 Gallons

Fuel Capacity: 336 Gallons

Accommodations

Total Cabins: 2

Total Heads: 2

Hull and Deck Information

Hull Material: Fiberglass

Hull Finish: Aluminum

Engine Information

Engines: 2

Manufacturer: Caterpillar

Model: 3126

Engine Type: Inboard

Fuel Type: Diesel

DETAILED INFORMATION

Cockpit/Helm

- Teak Decks
- Boarding Gate
- L-shaped seating AFT to port
- Wet bar to starboard with grill, sink, rartan icemaker and isotherm fridge
- Seating To port forward
- Helm Bench seat to starboard

HELM

- Ritchie Compass
- Simrad VHF RS87
- Simrad AP22 Autopilot
- Simrad IS12 depthsounder
- Simrad NSS12 Chartplotter
- Furuno Navnet C-MAP NT with radar
- ZF electronics control
- Caterpillar Electromic digital engine monitoring controls
- Sony stereo remote
- Side Power Bow Thrusters
- Windlass remote
- Wipers remote

Galley

To Port

- Cherry Wood Interior
- Two Burner Kenyon stove
- Upright Fridge (Coolmatic) 220V
- Sink
- Whirlpool Microwave 110V
- Upper and lower cabinets
- Two portlights

Salon

To Starboard

- Cream colored u-shaped sofa
- Drop Leaf Table
- Upper Cabinets
- white vinyl headliners
- Sharp Aquos Flat screen
- Sony Stereo with Alpine amp

Master Stateroom

Forward

- V-berth island double
- Hanging Lockers
- Ample Storage
- Cherry Wood Cabinetry
- Storage under berth

Ensuite Head to port

- Full Circular shower
- Vacu Flush Head

Guest Stateroom

To Port

- Twin Single Berths
- Hanging Locker
- Storage underneath beds
- Entertainment Center

Guest Head

- Vacuflush head
- Glass sink
- Handheld shower

Electrical

- DC 12V and 24 V
- Two sets of 5 12V AGM batteries
- Phase Three Model PT-24-45F 24V charger
- Pro Mariner ProNautic 12.20P 12V charger

- A.C. Voltage-50amp 120/240V
- Glendinning Cablemaster 50amp

Mechanical

- Kohler 6.5kw Generator 110-220V 862 hrs
- CAT 3126 Inboard diesels 455HP
- ZF marine transmissions
- Hypro Marine steering system

Exclusions

Owner's personal belongings.

Disclaimer

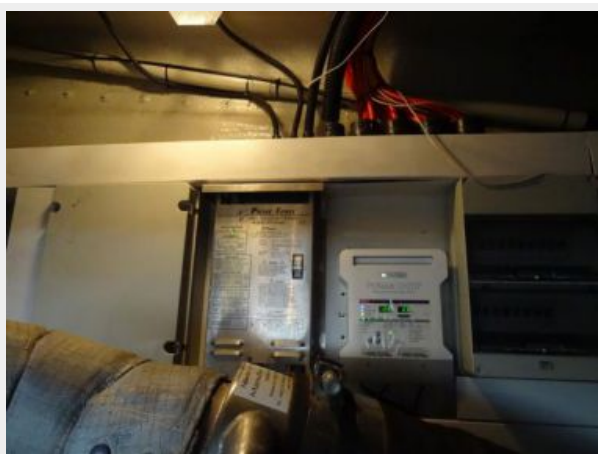
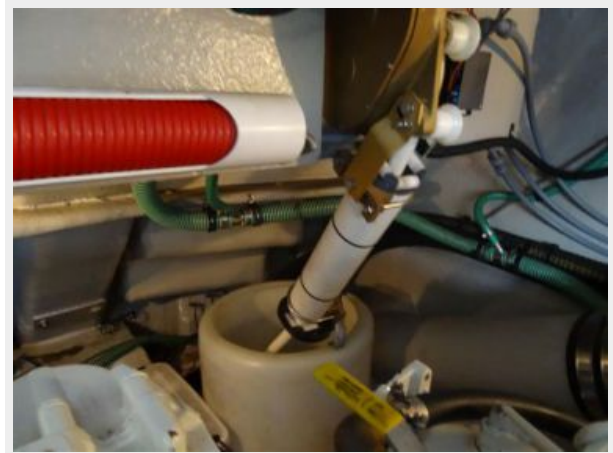
The Company offers the details of this vessel or yacht in good faith but cannot guarantee or warrant the accuracy of this information nor warrant the condition of the vessel. A buyer should instruct his representatives, agents, or his surveyors, to investigate such details as the buyer desires validated. This vessel or yacht is offered subject to prior sale, price change, or withdrawal without notice.

PHOTOS











CONTACTS

Andrey Shestakov, leading yacht broker of the sales department of Shestakov Yacht Sales Inc. Shestakov Yacht Sales Inc., the official representative of the Miami/Fort Lauderdale FL headquarters.

Contact details

Email: andrey@shestakovyachtsales.com

Web: shestakovyachtsales.com/en/

Telephones

USA: +1(954)274-4435

Office hours

Monday – Saturday: **9:00 - 21:00** EDT

Sunday: **closed**

Address



Harbour Towne Marina, 850 NE 3rd St,
STE 213, Dania, FL 33004