

CITY (EX: EXACT, ANOATOK) — FEADSHIP



Builder: FEADSHIP

LOA: 86' (26.21mm)

Year Built: 1964

Beam: 20

Model: Motor Yacht

Min Draft: 6' (1.83mm)

Price: Price on Application

Location: The Bahamas

Our experienced yacht broker, Andrey Shestakov, will help you choose and buy a yacht that best suits your needs **City (ex: Exact, Anokatok) — FEADSHIP** from our catalogue. Presently, at Shestakov Yacht Sales Inc., we have a wide variety of yachts available on our sale's list. We also work in close contact with all the big yacht manufacturers from all over the world.

If you would like to buy a yacht **City (ex: Exact, Anokatok) — FEADSHIP** or would like help answering any questions concerning purchasing, selling or chartering a yacht, please call **+1(954)274-4435**

TABLE OF CONTENTS

TABLE OF CONTENTS	2
SPECIFICATIONS	6
Overview	6
Basic Information	6
Dimensions	6
Accommodations	6
Hull and Deck Information	6
Engine Information	7
PHOTOS	8
Current condition	8
Current condition	8
Shown as 'Dale R' with new satellite dome	8
Current condition	8
Shown as 'Dale R'	9
M/Y Exact	9
Photo courtesy of Feadship Archives	9
Photo courtesy of Feadship Archives	9
Photo courtesy of Feadship Archives	9
Photo courtesy of Feadship Archives	9
Photo courtesy of Feadship Archives	10
Photo courtesy of Feadship Archives	10
Photo courtesy of Feadship Archives	10
Photo courtesy of Feadship Archives	10
Photo courtesy of Feadship Archives	11
Photo courtesy of Feadship Archives	11
Photo courtesy of Feadship Archives	11
Photo courtesy of Feadship Archives	11
Photo courtesy of Feadship Archives	11

Photo courtesy of Feadship Archives	11
Photo courtesy of Feadship Archives	12
Photo courtesy of Feadship Archives	12
Photo courtesy of Feadship Archives	12
Photo courtesy of Feadship Archives	12
Current condition (May 16, 2015)	12
Photo courtesy of Feadship Archives	12
Current condition (May 16, 2015)	13
Current condition (May 16, 2015)	13
Current condition (May 16, 2015)	13
Current condition (May 16, 2015)	13
Current condition (May 16, 2015)	14
Current condition (May 16, 2015)	14
Current condition (May 16, 2015)	14
Current condition (May 16, 2015)	14
Current condition (May 16, 2015)	15
Current condition (May 16, 2015)	15
Current condition (May 16, 2015)	15
Port shaft	15
Aft deck entry	15
Aft deck entry	15
Aft deck	16
Aft deck seating	16
Full walk arounds	16
Aft deck seating	16
Full walk arounds	17
Current condition (May 16, 2015)	17
Current condition (May 16, 2015)	17
Current condition (May 16, 2015)	17

Current condition (May 16, 2015)	18
Flybridge mast looking aft	18
Flybridge with davit	18
Flybridge with mast & davit	18
Engine room entry	19
Main salon	19
Main salon	19
Stairs to guest accomodations	19
Wheel house	19
Helm chairs	19
Helm station	20
Helm station	20
Bunk room	20
Dining	20
Dining area with large portholes in the hull	20
Galley	20
Crew accomodations	21
Engine room	21
Engine room	21
Generator #1	21
Generator #2	21
Detroit engines	21
Detroit engines	22
Running gear	22
Rudders	22
Article on EXACT in Yachting Magazine, March 1965 (page 1)	22
Article on EXACT in Yachting Magazine, March 1965 (page 2)	23
Article on EXACT in Yachting Magazine, March 1965 (page 3)	23
Original General Arrangement details	23

CONTACTS	24
Contact details	24
Telephones	24
Office hours	24
Address	24

SPECIFICATIONS

Overview

Originally launched as 'EXACT' - this 1964 86ft Classic Canoe Stern Feadship is in need of a complete refit/rebuild.

She is currently on the hard in Freeport, Bahamas at Bradford Shipyard. The hull is pitting and estimated to take 6-8 months to rebuild at a cost of 500,000 euro (+/-) as per Feadship's inspection (this quote is from a few years ago and the yacht has since deteriorated further)Man hours alone for the hull is estimated at roughly 7,500.Total refit would be approximately 8m+ euro.Transport to the Netherlands will cost 120,000 euro as quoted.The end result would be a fully restored, timeless classic that will enter the 'Feadship Heritage Fleet' ready to conquer the worlds oceans for another lifetime. We are searching for someone willing to breath life back into this gorgeous classic yacht. ***Please contact us for more information:***

Basic Information

Category: Motor Yacht

Model Year: 1964

Year Built: 1964

Country: The Bahamas

Dimensions

LOA: 86' (26.21mm)

LWL: 77' (23.47mm)

Beam: 20

Min Draft: 6' (1.83mm)

Accommodations

Total Cabins: 4

Total Heads: 4

Hull and Deck Information

Hull Material: Steel

Engine Information

Engines: 2

Manufacturer: Detroit Diesel

Engine Type: Inboard

Fuel Type: Diesel

PHOTOS

Current condition



Current condition



Current condition



Shown as 'Dale R' with new satellite dome



Shown as 'Dale R'



Photo courtesy of Feadship Archives



Photo courtesy of Feadship Archives



M/Y Exact



Photo courtesy of Feadship Archives



Photo courtesy of Feadship Archives



Photo courtesy of Feadship Archives



Photo courtesy of Feadship Archives



Photo courtesy of Feadship Archives



Photo courtesy of Feadship Archives



Photo courtesy of Feadship Archives



Photo courtesy of Feadship Archives



Photo courtesy of Feadship Archives



Photo courtesy of Feadship Archives



Photo courtesy of Feadship Archives



Photo courtesy of Feadship Archives



Photo courtesy of Feadship Archives



Photo courtesy of Feadship Archives



Photo courtesy of Feadship Archives



Photo courtesy of Feadship Archives



Photo courtesy of Feadship Archives



Current condition (May 16, 2015)



Current condition (May 16, 2015)



Current condition (May 16, 2015)



Current condition (May 16, 2015)

Current condition (May 16, 2015)



Current condition (May 16, 2015)



Current condition (May 16, 2015)



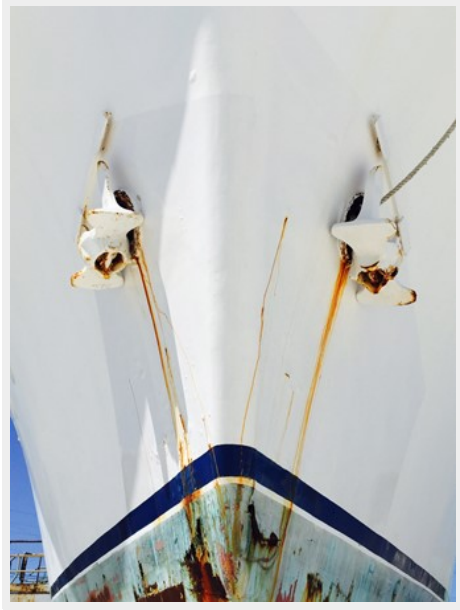
Current condition (May 16, 2015)



Current condition (May 16, 2015)



Current condition (May 16, 2015)



Current condition (May 16, 2015)



Current condition (May 16, 2015)



Port shaft



Aft deck entry



Aft deck entry



Aft deck



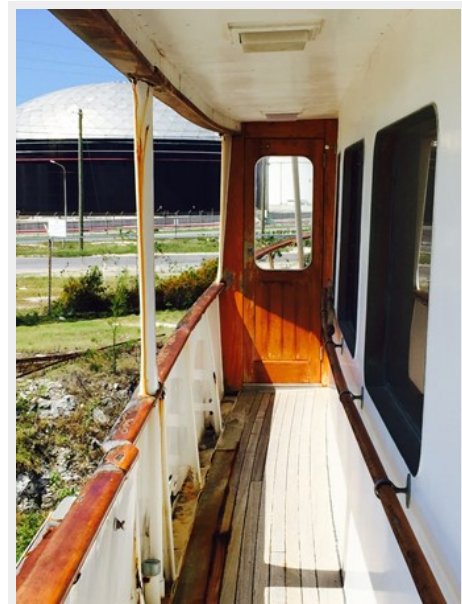
Aft deck seating



Aft deck seating



Full walk arounds



Full walk arounds



Current condition (May 16, 2015)



Current condition (May 16, 2015)



Current condition (May 16, 2015)



Current condition (May 16, 2015)



Flybridge mast looking aft



Flybridge with mast & davit



Flybridge with davit



Engine room entry



Main salon



Main salon



Stairs to guest accommodations



Wheel house



Helm chairs



Helm station



Helm station



Dining



Bunk room



Dining area with large portholes in the hull



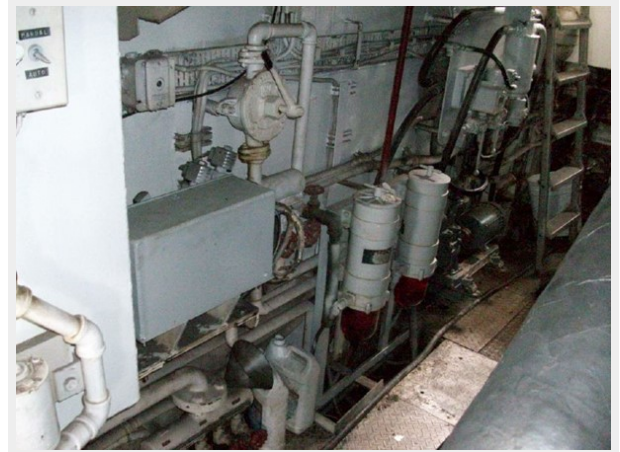
Galley



Crew accomodations



Engine room



Engine room



Generator #1



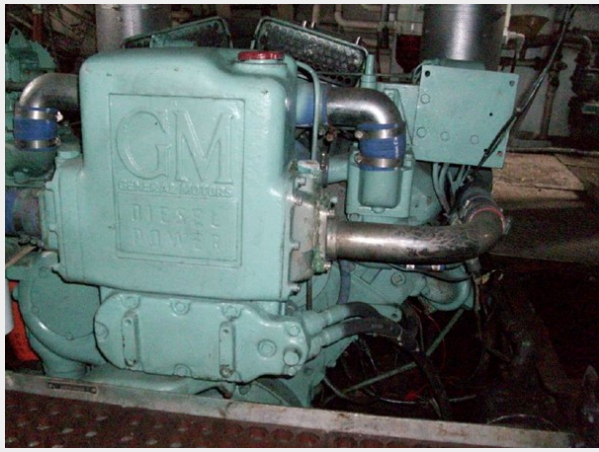
Generator #2



Detroit engines



Detroit engines



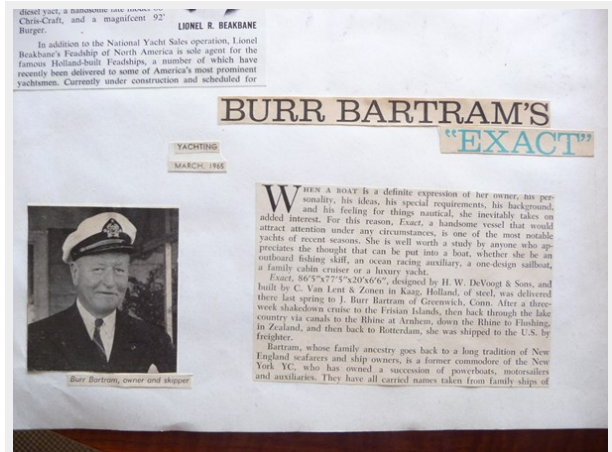
Running gear



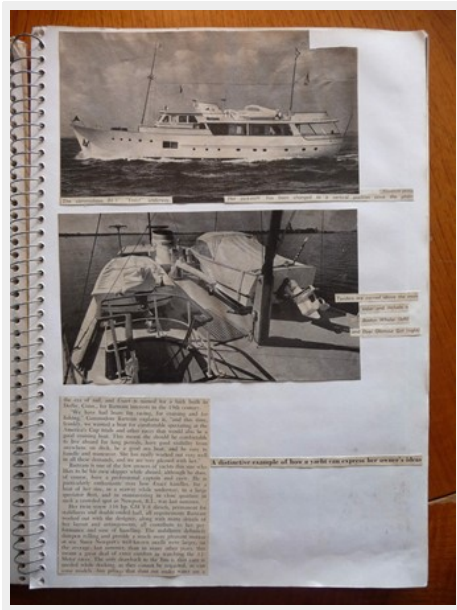
Rudders



Article on EXACT in Yachting Magazine, March 1965 (page 1)



Article on EXACT in Yachting Magazine, March 1965 (page 2)



Article on EXACT in Yachting Magazine, March 1965 (page 3)



Original General Arrangement details

Ingenieursbureau voor scheepsbouw				
H. W. DE VOOGT & ZONN C.V.				
HAARLEM		ZONNELAAN 12		HOLLAND
GEWUZIGD	T.S. MOTORYACHT FOR			
	MR. J.B. BARTRAM HOBOSOUND FLORIDA			
	FEADSHIP		JACHT EN SCHEEPWERF	
			CV. LENT & ZH. BOUWHUIS	
CONSTRUCTIE PLAN				
SCHAAL	GETEKEND	GEZIEN	DATUM	No 1727-6
1:20	A.B.L.	15/70	27-6-63	

CONTACTS

Andrey Shestakov, leading yacht broker of the sales department of Shestakov Yacht Sales Inc. Shestakov Yacht Sales Inc., the official representative of the Miami/Fort Lauderdale FL headquarters.

Contact details

Email: andrey@shestakovyachtsales.com

Web: shestakovyachtsales.com/en/

Telephones

USA: +1(954)274-4435

Office hours

Monday – Saturday: **9:00 - 21:00** EDT

Sunday: **closed**

Address



Harbour Towne Marina, 850 NE 3rd St,
STE 213, Dania, FL 33004