

## 37FT 1998 SEA RAY 370 AFT CABIN — SEA RAY



**Builder:** SEA RAY

**Year Built:** 1998

**Model:** Motor Yacht

**Price:** PRICE ON APPLICATION

**Location:** United States

**LOA:** 37' 0" (11.28m)

**Beam:** 14' 3" (4.34m)

**Max Draft:** 3' 2" (0.97m)

Our experienced yacht broker, Andrey Shestakov, will help you choose and buy a yacht that best suits your needs 37ft 1998 Sea Ray 370 Aft Cabin — SEA RAY from our catalogue. Presently, at Shestakov Yacht Sales Inc., we have a wide variety of yachts available on our sale's list. We also work in close contact with all the big yacht manufacturers from all over the world.

If you would like to buy a yacht 37ft 1998 Sea Ray 370 Aft Cabin — SEA RAY or would like help answering any questions concerning purchasing, selling or chartering a yacht, please call +1(954)274-4435

# TABLE OF CONTENTS

TABLE OF CONTENTS	2
SPECIFICATIONS	3
Basic Information	3
Dimensions	3
Speed, Capacities and Weight	3
Accommodations	3
Hull and Deck Information	3
Engine Information	3
DETAILED INFORMATION	4
Manufacturer Provided Description	4
Exclusions	4
Disclaimer	4
PHOTOS	6
CONTACTS	10
Contact details	10
Telephones	10
Office hours	10
Address	10

# SPECIFICATIONS

## Basic Information

Category: Motor Yacht	Model Year: 1998
Year Built: 1998	Country: United States

## Dimensions

LOA: 37' 0" (11.28m)	Beam: 14' 3" (4.34m)
Max Draft: 3' 2" (0.97m)	MFG Length: 38' 2" (11.63m)

## Speed, Capacities and Weight

Displacement: 24000 Pounds	Water Capacity: 100 Gallons
Holding Tank: 54 Gallons	Fuel Capacity: 300 Gallons

## Accommodations

Total Berths: 4
-----------------

## Hull and Deck Information

Hull Material: Fiberglass
---------------------------

## Engine Information

Engines: 2	Manufacturer: Mercruiser
Model: 7.4 L MPI Horizon	Engine Type: Inboard
Fuel Type: Gas/Petrol	

---

# DETAILED INFORMATION

---

## Manufacturer Provided Description

---

The Sea Ray 370 Aft Cabin is a sport yacht that enables you to spend the night away from home. Powered by twin 7.4L MerCruiser inboards, the 370 Aft Cabin features a center helm station with burl instrument panels, custom slide - swivel helm seats and an aft-facing sun lounge and bench seat with storage below. A wide 14-foot, three-inch beam enables the 370 Aft Cabin to provide ample, level walkways to the foredeck on both port and starboard sides. Welded stainless steel stanchions with through-bolted stainless steel handrails and bow rail ensure passengers a safe trip forward and aft. The spacious aft deck is covered by a fiberglass hardtop, has port and starboard entrance doors, and can be fully enclosed by custom side and aft skirts. This deck features 12-volt lighting, a built-in wet bar with sink, beverage holders, and trash receptacle. Access the bridge from the aft deck via portside molded steps. Two adjustable captain's chairs face the helm station. Guests can relax on the bench seat or the forward-facing sun lounge on the starboard side. The aluminum-framed Venturi windshield is tinted for optimum viewing. The center helm station has burl instrument panels with custom backlit instrumentation and a Raytheon electronics package that includes a VHF radio and Raydata multifunction instrument with depth finder, speed - sumlog, and water temperature. Below decks, there's a large salon with an L-shaped sofa, a dining - cocktail table and an entertainment center. Guests can relax in a comfortable barrel chair and enjoy the built-in 20-inch color TV - VCR combo with remote and Clarion digital AM - FM cassette stereo. The L-shaped sofa has an electrically operated slide-out bed to accommodate overnight guests. The pedestal dining - cocktail table stores out of sight when not in use. In the aft master stateroom, a queen-size bed with innerspring mattress ensures maximum comfort. Cedar-lined closets and a hanging locker with mirrored doors provide plenty of room for clothing. The en suite head has a VacuFlush toilet, Corian vanity with sink, and shower with seat and bifold door. The forward stateroom features a full-size pedestal bed, cedar-lined hanging lockers with mirrored doors, side shelf storage, a privacy door, and private access to the main head. The forward head compartment features a VacuFlush toilet, molded vanity with sink and Corian countertop, and pullout shower wand. The port stateroom features a twin bed and built-in storage. The galley has a 7.4-cubic-foot refrigerator - freezer, flush-mounted three-burner electric stove, and microwave - convection oven.

## Exclusions

---

Owner's personal belongings.

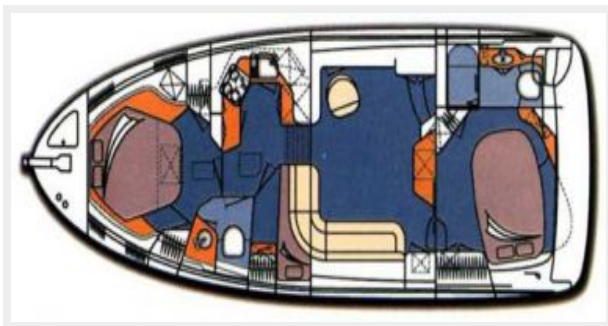
## Disclaimer

---

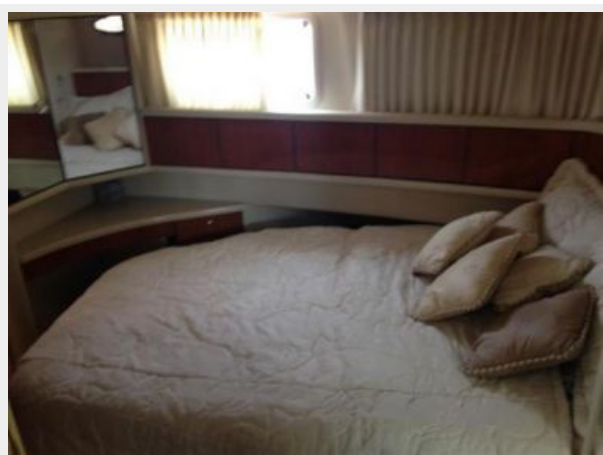
The Company offers the details of this vessel or yacht in good faith but cannot guarantee or warrant the accuracy of this information nor warrant the condition of the vessel. A buyer should instruct his representatives, agents, or his surveyors, to investigate such details as the buyer

desires validated. This vessel or yacht is offered subject to prior sale, price change, or withdrawal without notice.

# PHOTOS













# CONTACTS

---

Andrey Shestakov, leading yacht broker of the sales department of Shestakov Yacht Sales Inc. Shestakov Yacht Sales Inc., the official representative of the Miami/Fort Lauderdale FL headquarters.

## Contact details

---

Email: **andrey@shestakovyachtsales.com**

Web: [shestakovyachtsales.com/en/](http://shestakovyachtsales.com/en/)

## Telephones

---

USA: **+1(954)274-4435**

## Office hours

---

Monday – Saturday: **9:00 - 21:00 EDT**

Sunday: **closed**

## Address

---



Harbour Towne Marina, 850 NE 3rd St,  
STE 213, Dania, FL 33004