

VENTURESUM IV — HATTERAS



Судостроитель: HATTERAS

Год постройки: 1988

Модель: Моторная яхта

Цена: **ЦЕНА ЯХТЫ ПО ЗАПРОСУ**

Местонахождение: United States

Длина общая: 67' 0" (20.42m)

Ширина: 18' 2" (5.54m)

Мин. осадка: 5' 1" (1.55m)

Макс. осадка: 5' 1" (1.55m)

Купить Venturesum IV — HATTERAS а также выбрать подходящую вам яхту из нашего каталога яхт вам поможет опытный яхтенный брокер Андрей Шестаков. На сегодняшний день компания Shestakov Yacht Sales Inc. имеет большое количество яхт в собственном списке продаж, а также тесно сотрудничает со всеми крупными яхтенными производителями по всему миру.

Для того чтобы купить яхту Venturesum IV — HATTERAS а также проконсультироваться по любому вопросу связанному с покупкой, продажей, чартером яхт позвоните по телефону **+7(918)465-66-44**.

ОГЛАВЛЕНИЕ

ОГЛАВЛЕНИЕ	2
ХАРАКТЕРИСТИКИ	6
Обзор	6
Основная информация	6
Размеры	6
Скорость, вместимость и масса	7
Размещение	7
Корпус и палуба	7
Информация о двигателе	7
ПОДРОБНОЕ ОПИСАНИЕ	8
Vessel Walkthrough	8
Aft Deck	8
Main Salon	8
Pilothouse	9
Galley	9
Master Suite	9
Admidship Guest Cabin	10
Forward Cabin	10
Flybridge & Boat Deck	10
Cockpit	11
Engine/Mechanical Equipment	11
Electrical	11
Electronics	11
Updates	12
Disclaimer	12
Исключения	12
Отказ от ответственности	13
ФОТОГРАФИИ	14

Salon	14
Galley & Dinette	14
Master Stateroom	14
Pilothouse	14
Salon	14
Salon	14
Salon	15
Salon	15
Salon	15
Salon	15
Dinette	15
Galley	15
Galley	16
Galley & Dinette	16
Galley	16
Master Stateroom	16
Master Stateroom	16
Master Stateroom	16
Master Stateroom	17
Master Head	17
Master Head	17
Guest Stateroom	17
Guest Stateroom	17
Guest Stateroom	17
Guest Head	18
Crew	18
Crew Head	18
Guest Head	18
Washer-Dryer	19

Pilothouse	19
Pilothouse	19
Pilothouse Seating	19
Flybridge Helm	19
Flybridge Helm	19
Flybridge Helm	20
Flybridge	20
Flybridge	20
Flybridge	20
Flybridge	20
Flybridge	20
Flybridge	20
Flybridge	21
Flybridge	21
Flybridge	21
Flybridge	21
Flybridge Aft	21
Flybridge Davit	21
Flybridge Grill	22
Flybridge Grill	22
Flybridge New Non Skid	22
Flybridge Seating	22
Aft	22
Aft	22
Aft	23
Cockpit	23
Cockpit	23
Cockpit	23
Cockpit	23
Engine Room	23

Engine Room	24
Engine Room	24
Engine Room	24
Tender	24
Forward	24
Forward	24
Stern	25
Profile	25
Profile	25
КОНТАКТЫ	26
Контактная информация	26
Телефоны	26
Время работы	26
Адрес	26

ХАРАКТЕРИСТИКИ

Обзор

Excellent Condition, Low Low Price

1 Owner Since 1998

Motivated!

Twin Detroit Diesel 12v71's 400 hours since overhaul

New non-skid cockpit sole

Fresh paint and striping on the bridge

Fresh non-skid on main and bridge decks

Washer + dryer upgraded to Bosch

If you plan to purchase a classic Hatteras Motor Yacht, don't miss out on Venturesum IV. She has been continuously maintained to a high standard. She is a 2 owner boat, purchased in 1998 from the original owner. Much has been spent on her to maintain her and she is ready for her next owner.

Основная информация

Тип судна: Моторная яхта

Подкатегория: Flybridge

Модельный год: 1988

Год постройки: 1988

Страна: United States

Верх: Bimini Top

Открытая палуба мостика: Да

Размеры

Длина общая: 67' 0" (20.42m)

Ширина: 18' 2" (5.54m)

Мин. осадка: 5' 1" (1.55m)

Макс. осадка: 5' 1" (1.55m)

Скорость, вместимость и масса

Водоизмещение: 90000 Pounds

Вместимость воды: 375 Gallons

Объем топливного бака: 1170 Gallons

Размещение

Всего кают: 3

Всего коек: 5

Спальные места: 6

Всего ком. состава: 3

Корпус и палуба

Материал корпуса: Fiberglass

Информация о двигателе

Двигатели: 2

Производитель: Detroit Diesel

Модель: 12V71

Тип двигателя: Inboard

Тип топлива: Diesel

ПОДРОБНОЕ ОПИСАНИЕ

Vessel Walkthrough

A classic Hatteras cockpit motor yacht with a 3 stateroom/3 Head layout, galley down, large enclosed aft deck and spacious cockpit. Walkways on the main deck are under cover with open seating on the bow. The bow hatch provides an additional access to the forward guest cabin.

The aft deck on VENTURESUM IV is enclosed on port and starboard sides and has clear, vinyl curtains aft which makes this area an integrated part of the main salon when fully closed or a classic al fresco aft deck when open. The cockpit can be reached via the gate and stairway to starboard. A clear, lucite bulkhead with sliding doors opens into the main salon that has been beautifully decorated with warm wood paneling, beige window treatments, light carpeting and black counter tops.

The open pilothouse forward has 360° visibility for the helmsperson. A settee forms the division from salon to pilothouse. A stairway to starboard leads four steps down to the galley while a portside ladder accesses the flybridge.

The galley is full beam with all major appliances and a 4 person dinette. Two steps down from the galley is a guest cabin with over/under berths and ensuite head with shower. Aft from the galley is a twin berth cabin to port and head w/shower and laundry to starboard. The engine room is split to port and starboard with access from each side of the companionway. The full beam master suite is in the stern section and is complete with en suite head and tub/shower.

Aft Deck

- Fully enclosed with clear vinyl roll-up curtains aft
- Exterior doors to port & starboard and stairway access to cockpit
- Carpeting
- 4 Oversize wicker chairs
- End tables
- Wet bar with icemaker, refrigerator and storage area

Main Salon

The Main Salon is furnished in neutral tones with black accents. The clear, lucite bulkhead has sliding doors allowing incorporation of the aft deck and creating a voluminous interior space. A large sofa in cocoa leather facing aft combined with the matching cocoa settee in the open pilothouse form a division of the spaces without compromising the helmsman's visibility. This layout gives an airy, vibrant ambiance to the main deck interior.

- Leather L-Settee
- Custom clear lucite coffee table w/mirrored base
- 2 Tub chairs w/built in cabinet between
- Storage cabinet for glassware and wine cooler to port
- Entertainment center to starboard
- Custom overhead

Pilothouse

The open pilothouse gives the helmsman 360° visibility. Port and starboard doors allow for quick access to the exterior and a ladder to port leads to the flybridge.

- Semi gloss finished wood paneling
- Full navigation console
- Large chart area
- Drawer storage
- Parquet sole
- 3 person cocoa naugahyde settee
- Curved stairway to galley and staterooms-starboard

Galley

Four steps down from the pilothouse is the fully equipped galley. There is a dinette for 4 at the base of the stairway. The galley is very open with bulkheads, cabinetry & work space finished in white formica. A laundry locker with new Bosch front loading washer & dryer is just aft of the galley.

- 4 Seat dinette
- Side-by-side refrigerator/freezer
- Trash compactor
- Dishwasher
- 4 Burner electric stove
- Microwave oven
- Bosch washer/dryer

Master Suite

The master suite is full beam, aft. There is excellent ventilation and view from screened portholes on both sides as well as an additional portlights aft.

- King berth with storage below
- En Suite Head w/whirlpool tub & shower

- Large built in chest of drawers to port
- Built in drawers and dressing table to starboard
- 2 Cedar lined hanging lockers
- Carpeted sole
- Wood paneling
- TV & Stereo
- Full length mirror

Admidship Guest Cabin

- Twin berths w/drawer storage below
- Night stand w/drawer storage
- Cedar hanging locker
- Port lights w/screens
- A full head with shower is across the hallway to starboard

Forward Cabin

Located just forward of the galley, a screened overhead hatch and portholes supply excellent ventilation. This is a perfect cabin for children or crew. A door between the cabin & galley allows for a "get away from the adults" type of privacy for children or personal space for crew.

- Twin over/under berths with storage below
- Cedar hanging locker
- Drawer storage on port bulkhead
- TV
- En suite head w/shower
- Screened hatch and portholes

Flybridge & Boat Deck

- Helm console with full navigational equipment and abundant storage space below
- Twin helm chairs
- Radar Arch w/mast
- Bimini top
- Carpeted sole
- Gigantic U-lounge
- Coffee Table
- Storage cabinet houses refrigerator, icemaker and Jenn-Aire electric BBQ grill
- Low profile davit
- 14' Zodiac w/ 40 hp Yamaha outboard

Cockpit

- 7' Cockpit w/large transom door and coaming gate to swim platform
- Custom storage cabinet w/built-in Jenn-Aire grill
- Teak deck
- Lazarette hatch
- 24v Lighting under coaming
- Freshwater washdown hose bib

Engine/Mechanical Equipment

- Twin Detroit Diesel 12v71's w/400 hours since overhaul
- Naiad Stabilizers
- Engine synchronizer
- Oil changing system
- Fiberglass fuel tanks
- Fuel filters
- Fuel Tank selector manifold
- Trim Tabs
- Spare Propellers
- Fire Extinguisher system
- Valves on all underwater thru-hull fittings w/electrical bonding
- Pressurized water system w/electric water heater
- Automatic bilge pumps
- 240v Air compressor

Electrical

- 25 kw Onan generator w/3,100 hours
- 20 kw Onan generator w/ 4,600 hours
- Heavy duty marine batteries & charger
- AC/DC Magnetic circuit breakers
- 12 Point safety monitor system
- Navigational Lights
- Battery paralleling system
- Reverse cycle A/C & heat
- Cable TV and Telephone inlets
- TV Antenna
- Transformer connected shorelines

Electronics

- 2 x Garmin Chartplotter
- Icom VHF Radio (PH)
- Robertson Autopilot
- Furuno 72 mi color radar
- Standard Horizon VHF (FB)
- Datamarine Speed & Depth Sounder
- Shipmate SSB

Updates

New non-skid cockpit sole*

Fresh paint and striping on the bridge*

Fresh non-skid on main and bridge decks*

Washer + dryer upgraded to Bosch brand**

Installation of Tecma toilet in Master SR*

New air compressor*

Zodiac dinghy refurbished & new canvas cover*

Bottom paint*

New Naiad stabilizer seals installed*

*October 2014

**September 2011

Disclaimer

The Company offers the details of this vessel in good faith but cannot guarantee or warrant the accuracy of this information nor warrant the condition of the vessel. A buyer should instruct his agents, or his surveyors, to investigate such details as the buyer desires validated. This vessel is offered subject to prior sale, price change, or withdrawal without notice.

Исключения

При продаже яхты исключаются личные вещи владельца.

Отказ от ответственности

Компания предоставляет описание судна или яхты добросовестно, но не может гарантировать точность этой информации, а также не ручается за техническое состояние. Покупатель должен проинструктировать своих агентов или оценщиков исследовать представленную информацию более подробно, по собственному желанию. Продажа судна или яхты, изменение цены или снятие с продажи будет происходить без предварительного уведомления.

ФОТОГРАФИИ

Salon



Galley & Dinette



Master Stateroom



Pilothouse



Salon



Salon



Salon



Salon



Salon



Salon



Dinette



Galley



Galley



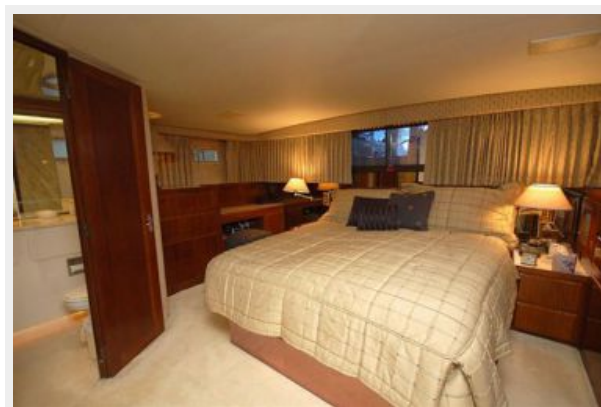
Galley & Dinette



Galley



Master Stateroom



Master Stateroom



Master Stateroom



Master Stateroom



Master Head



Master Head



Guest Stateroom



Guest Stateroom



Guest Stateroom



Crew



Guest Head



Guest Head



Crew Head



Washer-Dryer



Pilothouse



Pilothouse



Pilothouse Seating



Flybridge Helm



Flybridge Helm



Flybridge Helm



Flybridge



Flybridge



Flybridge



Flybridge



Flybridge



Flybridge



Flybridge



Flybridge



Flybridge



Flybridge Aft



Flybridge Davit



Flybridge Grill



Flybridge Grill



Flybridge New Non Skid



Flybridge Seating



Aft



Aft



Aft



Cockpit



Cockpit



Cockpit



Cockpit



Engine Room



Engine Room



Engine Room



Engine Room



Tender



Forward



Forward



Stern



Profile



Profile



КОНТАКТЫ

Андрей Шестаков (Andrey Shestakov) – ведущий яхтенный брокер отдела продаж яхт и судов компании Shestakov Yacht Sales Inc. Официальный представитель Shestakov Yacht Sales Inc. для русскоговорящих клиентов в центральном офисе компании в Майами/Форт Лодердейл/Флорида/США.

Контактная информация

Email: andrey@shestakovyachtsales.com

Web: shestakovyachtsales.com

Телефоны

Краснодарский край: **+7(918)465-66-44**

США, Майами, Флорида: **+1(954)274-4435**

Время работы

Понедельник – Суббота: **9:00 - 21:00**
EDT

Воскресенье: **Закрето**

Адрес



Harbour Towne Marina, 850 NE 3rd St,
STE 213, Dania, FL 33004