

SERIOUSLY FOR SALE — BROWARD



Builder: BROWARD

Year Built: 1973

Model: Motor Yacht

Price: PRICE ON APPLICATION

Location: United States

LOA: 73' 0" (22.25m)

Beam: 18' 3" (5.56m)

Max Draft: 5' 6" (1.68m)

Cruise Speed: 12 Kts. (14 MPH)

Max Speed: 14 Kts. (16 MPH)

Our experienced yacht broker, Andrey Shestakov, will help you choose and buy a yacht that best suits your needs **Seriously for Sale — BROWARD** from our catalogue. Presently, at Shestakov Yacht Sales Inc., we have a wide variety of yachts available on our sale's list. We also work in close contact with all the big yacht manufacturers from all over the world.

If you would like to buy a yacht **Seriously for Sale — BROWARD** or would like help answering any questions concerning purchasing, selling or chartering a yacht, please call **+1(954)274-4435**

TABLE OF CONTENTS

TABLE OF CONTENTS	2
SPECIFICATIONS	9
Overview	9
Basic Information	9
Dimensions	9
Speed, Capacities and Weight	10
Accommodations	10
Hull and Deck Information	10
Engine Information	10
DETAILED INFORMATION	11
Overview	11
Main Deck	11
Guest Staterooms	11
Engine Room	12
Exclusions	12
Disclaimer	12
PHOTOS	13
Starboard Profile	13
Bow from flybridge	13
Bow facing forward	13
Starboard bow facing forward	13
Bow facing forward	14
Bow facing forward	14
Bow facing aft	14
Bow facing towards port	14
Port aft deck - facing forward	15
Bow facing forward	15
Port facing aft	15

Starboard facing aft from bow	15
Port mid-ship facing aft	16
Port facing aft	16
Port facing aft	16
Port facing forward	16
Sundeck helm	16
Sundeck helm station	16
Sundeck facing aft	17
Sundeck wet-bar	17
Sundeck sink	17
Sundeck refrigerator	17
Sundeck - facing forward	18
Sundeck - helm station	18
Sundeck - facing forward	18
Sundeck - helm station	18
Sundeck throttle control	19
Sundeck - helm station	19
Sundeck throttle control	19
Sundeck - helm station	19
Sundeck facing aft	20
Sundeck port side facing forward	20
Access stairs from sundeck to aft seating area	20
Sundeck starboard side facing forward	20
Stairs from aft deck - tender	20
Davit - port facing aft	20
From starboard side facing port - aft deck	21
Aft deck wet-bar	21
Aft deck facing from starboard looking toward port	21
Aft deck	21

Aft deck - facing forward	21
Aft deck facing from starboard to port	21
Starboard facing forward	22
Aft deck wet bar	22
Aft deck - port side stairs to sundeck	22
Aft deck entrance to Salon	22
Main Salon - facing toward starboard	23
Main Salon - facing toward port	23
Main Salon - facing aft	23
Main Salon - facing forward	23
Dinning area - facing toward port	23
Dinning area - facing toward starboard	23
Stairs to guest cabins - Starboard aft area in salon	24
Dinning area - facing forward	24
Main salon stairs to guest quarters	24
Galley facing toward port	24
Galley	25
Galley facing aft	25
Galley	25
Galley	25
Galley facing aft	26
Galley	26
Galley	26
Galley	26
Starboard - in galley facing forward	27
Pilot house	27
Pilot house	27
Pilot house seating	27
Pilot house - starboard ignition	28

Pilot house - hatch to sundeck	28
Pilot house - port ignition	28
Pilot house	28
Pilot house	29
Pilot house	29
Pilot house	29
Pilot house	29
Pilot house - port throttle controls	29
Pilot house - starboard throttle controls	29
Pilot house	30
Pilot house	30
Stairs looking up from guest area	30
Pilot house facing starboard	30
Full beam master stateroom	31
Master stateroom facing aft	31
Master stateroom aft port swim platform access	31
Master stateroom facing aft - starboard side	31
Master stateroom facing forward - starboard side	32
Master stateroom entertainment system	32
Master stateroom heater (looks like a fireplace)	32
Master stateroom entertainment system	32
Master stateroom facing aft from en suite head and shower	33
Master stateroom storage	33
Master stateroom head & shower (port side)	33
Master stateroom head & shower	33
Master stateroom shower	34
Master stateroom sink	34
Master stateroom - facing aft	34
Guest area - facing forward	34

Guest area - facing forward	35
Guest area - storage	35
Guest area - storage	35
Guest stateroom - starboard	35
Guest stateroom - starboard	36
Guest stateroom - facing aft	36
Guest stateroom facing forward	36
Guest stateroom facing forward	36
Guest stateroom - head	37
Guest stateroom - head	37
Guest stateroom - head	37
Guest stateroom - head	37
Guest stateroom - port	38
Guest stateroom - port	38
Guest stateroom - port - facing forward	38
Guest stateroom - head & shower	38
Guest stateroom - head & shower	39
Guest stateroom - head & shower	39
Guest stateroom - port	39
Guest area - linen closet	39
Guest area - linen closet	40
Crew quarters - stairs from pilot house	40
Crews quarters - stairs from pilot house	40
Crews quarters - facing forward	40
Crews quarters - facing forward	41
Crews quarters head & shower	41
Crews quarters head & shower	41
Crews quarters - galley / salon	41
Crews quarters - Head & shower	42

Crews quarters -galley/salon	42
Crews quarters - galley/salon	42
Captains quarters - port side	42
Crews quarters - galley	43
Crews quarters - forward 'V' berth	43
Crews quarters - head & shower	43
Captains quarters - port side	43
Crews quarters - forward 'V' berth	44
Engine room	44
Engine room	44
Engine room	44
Engine room	45
Engine room	45
Engine room	45
Engine room	45
Engine room	45
Engine room	46
Engine room	46
Engine Room - 30kw Northern Lights GenSet	46
Engine room	46
Engine room - water maker	46
Engine room	46
Engine room - control panel	47
Engine room - fresh water system	47
Engine room - 30kw Northern Lights GenSet	47
Engine room	47
Engine room	48
Engine room - eco smart hot water heater	48
Engine room - 20 kw Northern Lights GenSet	48
Engine room - 30kw Northern Lights GenSet	48

Engine room - control panel	48
Engine room	48
Engine room	49
Engine room	49
Aft swim platform	49
Engine room	49
Swim platform	50
Broward	50
Port profile	50
CONTACTS	51
Contact details	51
Telephones	51
Office hours	51
Address	51

SPECIFICATIONS

Overview

This 1973 Broward Motor Yacht is one of the finest classic motor yachts available for sale on the East Coast. She is in immaculate condition after a major refit in 1994 and has been lovingly cared for by her present owner.

Amenities – Blue Ray TV in master, Radios in all three staterooms, bar with ice maker and Radio on aft deck and sundeck.

14' Boston Whaler tender.

She sleeps six guests in her three staterooms, each of which features en suite heads with lovely appointments. Her huge foredeck offers the ideal spot to read, sun bathe or just take in the spectacular views.

Du ring her 1994 refit, the sundeck/flybridge was added. This spacious area can easily entertain over twenty guests while the captain cruises the water ways from her upper helm station.

She has had additional refits and updates in 2000 and in 2008. She received all new galley appliances and her interior was redecorated in 2011.

SM

Basic Information

Category: Motor Yacht

Model Year: 1973

Year Built: 1973

Country: United States

Dimensions

LOA: 73' 0" (22.25m)

Beam: 18' 3" (5.56m)

Max Draft: 5' 6" (1.68m)

Speed, Capacities and Weight

Cruise Speed: 12 Kts. (14 MPH)

Cruise Speed RPM: 1850 Kts.

Max Speed: 14 Kts. (16 MPH)

Max Speed RPM: 2300 Kts.

Water Capacity: 550 Gallons

Holding Tank: 75 Gallons

Fuel Capacity: 1200 Gallons

Accommodations

Total Cabins: 5

Total Berths: 10

Total Heads: 4

Hull and Deck Information

Hull Material: Wood

Engine Information

Engines: 2

Manufacturer: Detroit Diesel

Model: 12V71N

Fuel Type: Diesel

DETAILED INFORMATION

Overview

Christina Tamar is a distinctly beautiful Classid Broward Motor Yacht.

In current and previous ownership she has benefitted with new teak decks, re-wiring, and engine room refurbishing.

In 1994, nearly a million dollars were spent on a refit including two new Northern Lights generators one 30 kw and one 20 kw. A sundeck with separate helm station and a large entertaining wet-bar were also added.

She was purchased by her current owner in 1998 and Christina Tamar shows the love and care of that a Classic Motor Yacht of her age deserves.

Main Deck

She has a large bow with a bench seat in front of her pilot house for guests to enjoy a little privacy and sun.

Continuing aft past port and starboard wheelhouse doors you find yourself on the beautiful aft deck with generous seating, a gorgeous wetbar, and all the comforts of home.

Her aft deck spiral stair case leads you to the oasis above. The sundeck, added in 1994, fits her character perfectly. There is ample seating, sun chairs, a well appointed wet-bar and a helm station with hers and his captains chairs. Her Boston Whaler tender sits aft of the beautiful sun deck.

Guest Staterooms

From a stairway entrance in the starboard main salon, you come down to the master stateroom and two guest staterooms.

The full beam master stateroom is aft, and includes a queen sized berth, generous storage, twin wardrobes, Flat Screen LCD TV with sound system, and ensuite head and shower. From the roomy walk in port aft closet, you can access the swim platform through a water tight access door. Conveniently, there is a shower for one to rinse off on the swim platform.

Forward to port is a guest stateroom with twin lower berths, cedar lined hanging lockers, ensuite head and large shower.

Opposite to starboard is the second guest stateroom with fixed lower berths and a recessed

upper berth, beautifully trimmed cabinets, cedar lined closet and ensuite head.

Engine Room

Main engines

Twin Detroit Diesel 12V71N's

Port engine freshly and fully rebuilt

Starboard engine in great shape with 4173 hours

New risers in 2009

New 32 volt batteries (2013)

New 12 volt batteries (2013)

New fresh water system (2013)

20kw Generator Lights - 2526 hours (new in 1994)

30kw Northern Lights Generator - 2705 hours (new in 1994)

Stainless Steel fuel tanks (new in 1994)

Exclusions

Owner's personal belongings.

Disclaimer

The Company offers the details of this vessel or yacht in good faith but cannot guarantee or warrant the accuracy of this information nor warrant the condition of the vessel. A buyer should instruct his representatives, agents, or his surveyors, to investigate such details as the buyer desires validated. This vessel or yacht is offered subject to prior sale, price change, or withdrawal without notice.

PHOTOS

Starboard Profile



Bow from flybridge



Bow facing forward



Starboard bow facing forward



Bow facing forward



Bow facing forward



Bow facing aft



Bow facing towards port



Port aft deck - facing forward

Bow facing forward



Port facing aft

Starboard facing aft from bow



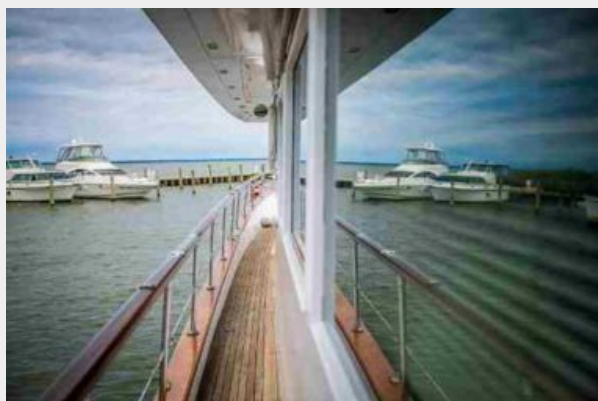
Port mid-ship facing aft



Port facing aft



Port facing aft



Port facing forward



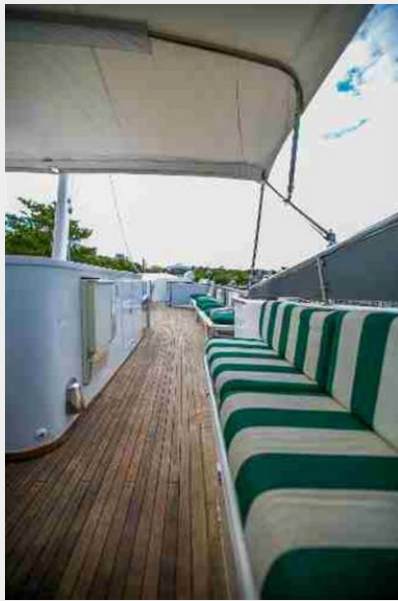
Sundeck helm



Sundeck helm station



Sundeck facing aft



Sundeck wet-bar



Sundeck sink



Sundeck refrigerator



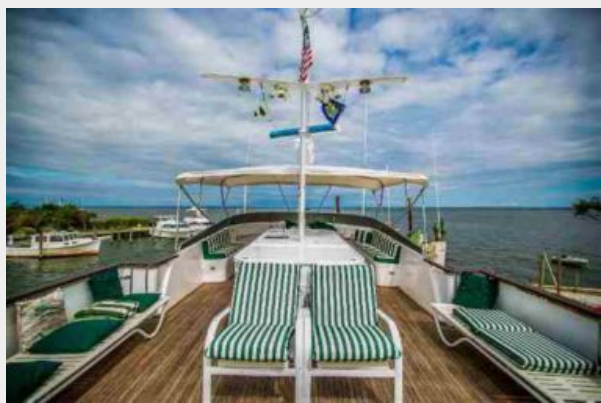
Sundeck - helm station



Sundeck - facing forward



Sundeck - facing forward



Sundeck - helm station



Sundeck - helm station



Sundeck throttle control



Sundeck throttle control



Sundeck - helm station



Sundeck facing aft



Sundeck port side facing forward



Access stairs from sundeck to aft seating area



Sundeck starboard side facing forward



Stairs from aft deck - tender



Davit - port facing aft



From starboard side facing port - aft deck



Aft deck wet-bar



Aft deck



Aft deck facing from starboard looking toward port



Aft deck - facing forward



Aft deck facing from starboard to port



Aft deck wet bar



Starboard facing forward



Aft deck - port side stairs to sundeck



Aft deck entrance to Salon



Main Salon - facing toward starboard



Main Salon - facing toward port



Main Salon - facing aft



Main Salon - facing forward



Dinning area - facing toward port



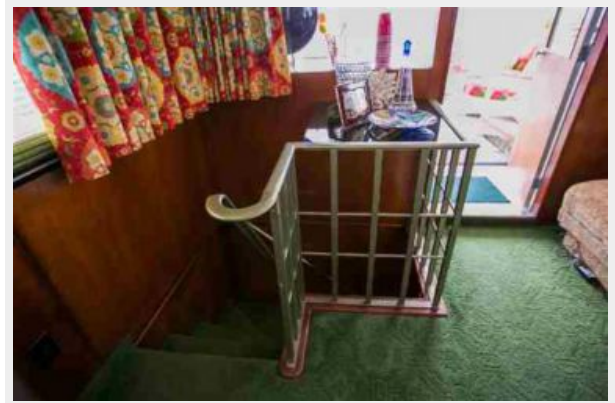
Dinning area - facing toward starboard



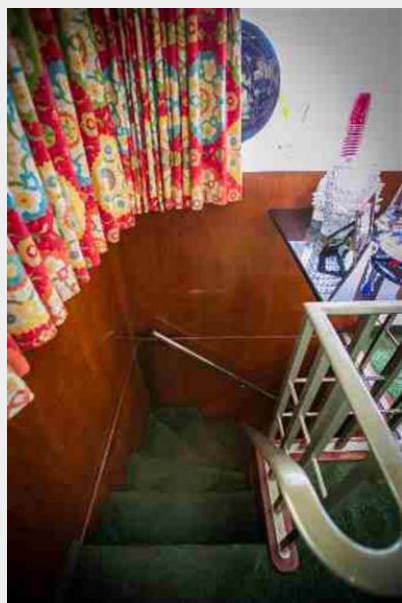
Dinning area - facing forward



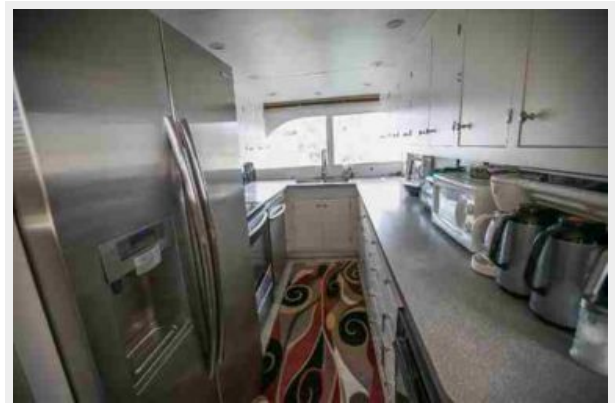
Stairs to guest cabins - Starboard aft area in salon



Main salon stairs to guest quarters



Galley facing toward port



Galley



Galley facing aft



Galley



Galley



Galley facing aft



Galley



Galley

Galley



Starboard - in galley facing forward



Pilot house



Pilot house



Pilot house seating



Pilot house - starboard ignition

Pilot house - hatch to sundeck



Pilot house - port ignition



Pilot house



Pilot house



Pilot house



Pilot house



Pilot house



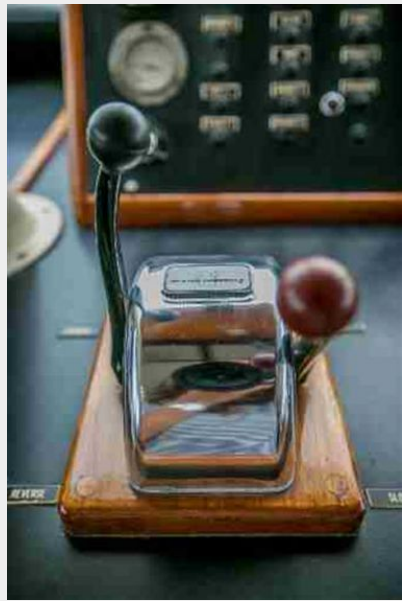
Pilot house - port throttle controls



Pilot house - starboard throttle controls



Pilot house



Pilot house



Stairs looking up from guest area

Pilot house facing starboard



Full beam master stateroom



Master stateroom facing aft



Master stateroom aft port swim platform access

Master stateroom facing aft - starboard side



Master stateroom facing forward - starboard side



Master stateroom entertainment system



Master stateroom heater (looks like a fireplace)



Master stateroom entertainment system



Master stateroom facing aft from en suite head and shower

Master stateroom storage



Master stateroom head & shower (port side)

Master stateroom head & shower



Master stateroom sink



Master stateroom shower



Master stateroom - facing aft



Guest area - facing forward



Guest area - facing forward



Guest area - storage



Guest area - storage



Guest stateroom - starboard



Guest stateroom - starboard



Guest stateroom - facing aft



Guest stateroom facing forward



Guest stateroom facing forward



Guest stateroom - head



Guest stateroom - head



Guest stateroom - head



Guest stateroom - head



Guest stateroom - port



Guest stateroom - port



Guest stateroom - port - facing forward



Guest stateroom - head & shower



Guest stateroom - head & shower



Guest stateroom - head & shower



Guest stateroom - port



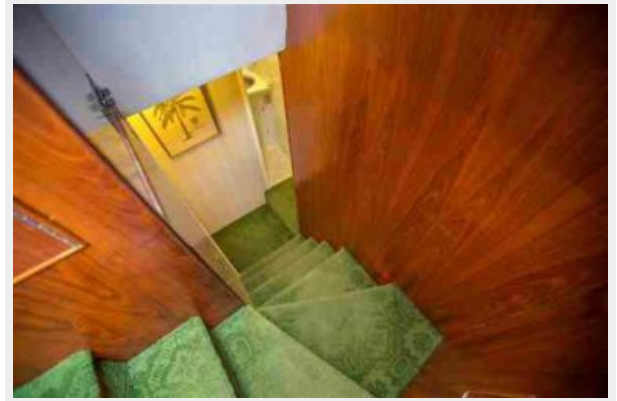
Guest area - linen closet



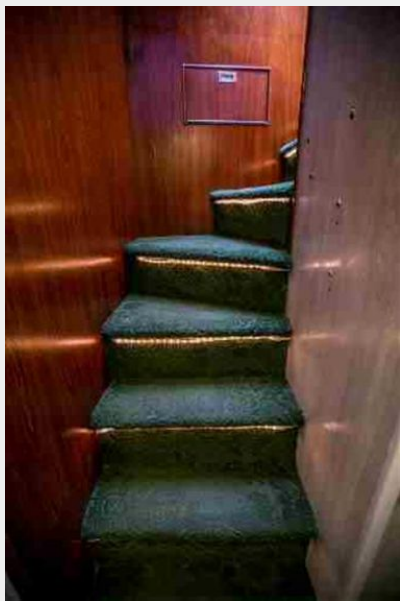
Guest area - linen closet



Crew quarters - stairs from pilot house



Crews quarters - stairs from pilot house



Crews quarters - facing forward



Crews quarters - facing forward



Crews quarters head & shower



Crews quarters head & shower



Crews quarters - galley / salon



Crews quarters - Head & shower



Crews quarters -galley/salon



Crews quarters - galley/salon



Captains quarters - port side



Crews quarters - galley



Crews quarters - forward 'V' berth



Crews quarters - head & shower



Captains quarters - port side



Crews quarters - forward 'V' berth



Engine room



Engine room

Engine room



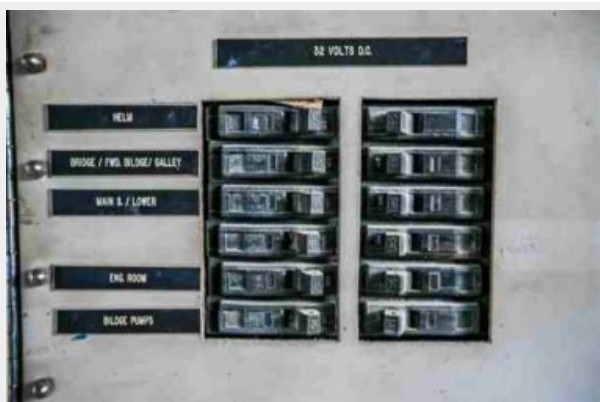
Engine room



Engine room



Engine room



Engine room



Engine room



Engine room



Engine Room - 30kw Northern Lights GenSet



Engine room



Engine room - water maker



Engine room



Engine room - control panel



Engine room - fresh water system



Engine room - 30kw Northern Lights GenSet



Engine room



Engine room



Engine room - eco smart hot water heater



Engine room - 30kw Northern Lights GenSet



Engine room - 20 kw Northern Lights GenSet



Engine room - control panel



Engine room



Engine room



Engine room



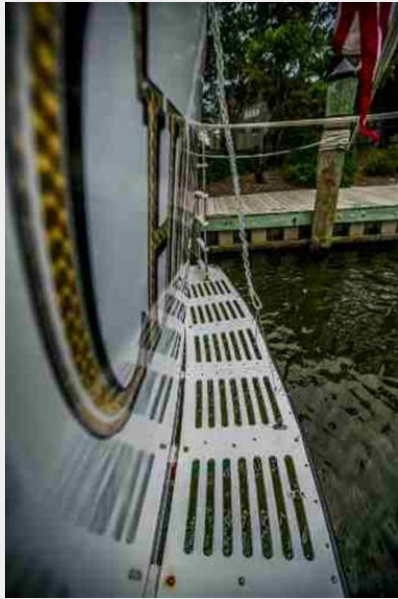
Engine room



Aft swim platform



Swim platform



Broward



Port profile



CONTACTS

Andrey Shestakov, leading yacht broker of the sales department of Shestakov Yacht Sales Inc. Shestakov Yacht Sales Inc., the official representative of the Miami/Fort Lauderdale FL headquarters.

Contact details

Email: **andrey@shestakovyachtsales.com**

Web: shestakovyachtsales.com/en/

Telephones

USA: **+1(954)274-4435**

Office hours

Monday – Saturday: **9:00 - 21:00 EDT**

Sunday: **closed**

Address



Harbour Towne Marina, 850 NE 3rd St,
STE 213, Dania, FL 33004