

## SERIOUSLY FOR SALE — BROWARD



**Судостроитель:** BROWARD

**Год постройки:** 1973

**Модель:** Моторная яхта

**Цена:** **ЦЕНА ЯХТЫ ПО ЗАПРОСУ**

**Местонахождение:** United States

**Длина общая:** 73' 0" (22.25m)

**Ширина:** 18' 3" (5.56m)

**Макс. осадка:** 5' 6" (1.68m)

**Крейс. скорость:** 12 Kts. (14 MPH)

**Макс. скорость:** 14 Kts. (16 MPH)

Купить **Seriously for Sale — BROWARD** а также выбрать подходящую вам яхту из нашего каталога яхт вам поможет опытный яхтенный брокер Андрей Шестаков. На сегодняшний день компания **Shestakov Yacht Sales Inc.** имеет большое количество яхт в собственном списке продаж, а также тесно сотрудничает со всеми крупными яхтенными производителями по всему миру.

Для того чтобы купить яхту **Seriously for Sale — BROWARD** а также проконсультироваться по любому вопросу связанному с покупкой, продажей, чартером яхт позвоните по телефону **+7(918)465-66-44**.

# ОГЛАВЛЕНИЕ

ОГЛАВЛЕНИЕ	2
ХАРАКТЕРИСТИКИ	9
Обзор	9
Основная информация	9
Размеры	9
Скорость, вместимость и масса	10
Размещение	10
Корпус и палуба	10
Информация о двигателе	10
ПОДРОБНОЕ ОПИСАНИЕ	11
Overview	11
Main Deck	11
Guest Staterooms	11
Engine Room	12
Исключения	12
Отказ от ответственности	12
ФОТОГРАФИИ	13
Starboard Profile	13
Bow from flybridge	13
Bow facing forward	13
Starboard bow facing forward	13
Bow facing forward	14
Bow facing forward	14
Bow facing aft	14
Bow facing towards port	14
Port aft deck - facing forward	15
Bow facing forward	15
Port facing aft	15

Starboard facing aft from bow	15
Port mid-ship facing aft	16
Port facing aft	16
Port facing aft	16
Port facing forward	16
Sundeck helm	16
Sundeck helm station	16
Sundeck facing aft	17
Sundeck wet-bar	17
Sundeck sink	17
Sundeck refrigerator	17
Sundeck - facing forward	18
Sundeck - helm station	18
Sundeck - facing forward	18
Sundeck - helm station	18
Sundeck throttle control	19
Sundeck - helm station	19
Sundeck throttle control	19
Sundeck - helm station	19
Sundeck facing aft	20
Sundeck port side facing forward	20
Access stairs from sundeck to aft seating area	20
Sundeck starboard side facing forward	20
Stairs from aft deck - tender	20
Davit - port facing aft	20
From starboard side facing port - aft deck	21
Aft deck wet-bar	21
Aft deck facing from starboard looking toward port	21
Aft deck	21

Aft deck - facing forward	21
Aft deck facing from starboard to port	21
Starboard facing forward	22
Aft deck wet bar	22
Aft deck - port side stairs to sundeck	22
Aft deck entrance to Salon	22
Main Salon - facing toward starboard	23
Main Salon - facing toward port	23
Main Salon - facing aft	23
Main Salon - facing forward	23
Dinning area - facing toward port	23
Dinning area - facing toward starboard	23
Stairs to guest cabins - Starboard aft area in salon	24
Dinning area - facing forward	24
Main salon stairs to guest quarters	24
Galley facing toward port	24
Galley	25
Galley facing aft	25
Galley	25
Galley	25
Galley facing aft	26
Galley	26
Galley	26
Galley	26
Starboard - in galley facing forward	27
Pilot house	27
Pilot house	27
Pilot house seating	27
Pilot house - starboard ignition	28

Pilot house - hatch to sundeck	28
Pilot house - port ignition	28
Pilot house	28
Pilot house	29
Pilot house	29
Pilot house	29
Pilot house	29
Pilot house - port throttle controls	29
Pilot house - starboard throttle controls	29
Pilot house	30
Pilot house	30
Stairs looking up from guest area	30
Pilot house facing starboard	30
Full beam master stateroom	31
Master stateroom facing aft	31
Master stateroom aft port swim platform access	31
Master stateroom facing aft - starboard side	31
Master stateroom facing forward - starboard side	32
Master stateroom entertainment system	32
Master stateroom heater (looks like a fireplace)	32
Master stateroom entertainment system	32
Master stateroom facing aft from en suite head and shower	33
Master stateroom storage	33
Master stateroom head & shower (port side)	33
Master stateroom head & shower	33
Master stateroom shower	34
Master stateroom sink	34
Master stateroom - facing aft	34
Guest area - facing forward	34

Guest area - facing forward	35
Guest area - storage	35
Guest area - storage	35
Guest stateroom - starboard	35
Guest stateroom - starboard	36
Guest stateroom - facing aft	36
Guest stateroom facing forward	36
Guest stateroom facing forward	36
Guest stateroom - head	37
Guest stateroom - head	37
Guest stateroom - head	37
Guest stateroom - head	37
Guest stateroom - port	38
Guest stateroom - port	38
Guest stateroom - port - facing forward	38
Guest stateroom - head & shower	38
Guest stateroom - head & shower	39
Guest stateroom - head & shower	39
Guest stateroom - port	39
Guest area - linen closet	39
Guest area - linen closet	40
Crew quarters - stairs from pilot house	40
Crews quarters - stairs from pilot house	40
Crews quarters - facing forward	40
Crews quarters - facing forward	41
Crews quarters head & shower	41
Crews quarters head & shower	41
Crews quarters - galley / salon	41
Crews quarters - Head & shower	42

Crews quarters -galley/salon	42
Crews quarters - galley/salon	42
Captains quarters - port side	42
Crews quarters - galley	43
Crews quarters - forward 'V' berth	43
Crews quarters - head & shower	43
Captains quarters - port side	43
Crews quarters - forward 'V' berth	44
Engine room	44
Engine room	44
Engine room	44
Engine room	45
Engine room	45
Engine room	45
Engine room	45
Engine room	45
Engine room	46
Engine room	46
Engine Room - 30kw Northern Lights GenSet	46
Engine room	46
Engine room - water maker	46
Engine room	46
Engine room - control panel	47
Engine room - fresh water system	47
Engine room - 30kw Northern Lights GenSet	47
Engine room	47
Engine room	48
Engine room - eco smart hot water heater	48
Engine room - 20 kw Northern Lights GenSet	48
Engine room - 30kw Northern Lights GenSet	48

Engine room - control panel	48
Engine room	48
Engine room	49
Engine room	49
Aft swim platform	49
Engine room	49
Swim platform	50
Broward	50
Port profile	50
<b>КОНТАКТЫ</b>	<b>51</b>
Контактная информация	51
Телефоны	51
Время работы	51
Адрес	51



---

# ХАРАКТЕРИСТИКИ

---

## Обзор

---

This 1973 Broward Motor Yacht is one of the finest classic motor yachts available for sale on the East Coast. She is in immaculate condition after a major refit in 1994 and has been lovingly cared for by her present owner.

Amenities – Blue Ray TV in master, Radios in all three staterooms, bar with ice maker and Radio on aft deck and sundeck.

14' Boston Whaler tender.

She sleeps six guests in her three staterooms, each of which features en suite heads with lovely appointments. Her huge foredeck offers the ideal spot to read, sun bathe or just take in the spectacular views.

During her 1994 refit, the sundeck/flybridge was added. This spacious area can easily entertain over twenty guests while the captain cruises the water ways from her upper helm station.

She has had additional refits and updates in 2000 and in 2008. She received all new galley appliances and her interior was redecorated in 2011.

**SM**

---

## Основная информация

---

**Тип судна:** Моторная яхта

**Модельный год:** 1973

**Год постройки:** 1973

**Страна:** United States

---

## Размеры

---

**Длина общая:** 73' 0" (22.25m)

**Ширина:** 18' 3" (5.56m)

**Макс. осадка:** 5' 6" (1.68m)

## Скорость, вместимость и масса

---

**Крейс. скорость:** 12 Kts. (14 MPH)

**Крейсерская скорость поворота:** 1850 Kts.

**Макс. скорость:** 14 Kts. (16 MPH)

**Макс. скорость поворота:** 2300 Kts.

**Вместимость воды:** 550 Gallons

**Вместимость сточного бака:** 75 Gallons

**Объем топливного бака:** 1200 Gallons

## Размещение

---

**Всего кают:** 5

**Всего коек:** 10

**Всего ком. состава:** 4

## Корпус и палуба

---

**Материал корпуса:** Wood

## Информация о двигателе

---

**Двигатели:** 2

**Производитель:** Detroit Diesel

**Модель:** 12V71N

**Тип топлива:** Diesel

---

# ПОДРОБНОЕ ОПИСАНИЕ

---

## Overview

---

*Christina Tamar* is a distinctly beautiful Classid Broward Motor Yacht.

In current and previous ownership she has benefitted with new teak decks, re-wiring, and engine room refurbishing.

In 1994, nearly a million dollars were spent on a refit including two new Northern Lights generators one 30 kw and one 20 kw. A sundeck with separate helm station and a large entertaining wet-bar were also added.

She was purchased by her current owner in 1998 and Christina Tamar shows the love and care of that a Classic Motor Yacht of her age deserves.

## Main Deck

---

She has a large bow with a bench seat in front of her pilot house for guests to enjoy a little privacy and sun.

Continuing aft past port and starboard wheelhouse doors you find yourself on the beautiful aft deck with generous seating, a gorgeous wetbar, and all the comforts of home.

Her aft deck spiral stair case leads you to the oasis above. The sundeck, added in 1994, fits her character perfectly. There is ample seating, sun chairs, a well appointed wet-bar and a helm station with hers and his captains chairs. Her Boston Whaler tender sits aft of the beautiful sun deck.

## Guest Staterooms

---

From a stairway entrance in the starboard main salon, you come down to the master stateroom and two guest staterooms.

The full beam master stateroom is aft, and includes a queen sized berth, generous storage, twin wardrobes, Flat Screen LCD TV with sound system, and ensuite head and shower. From the roomy walk in port aft closet, you can access the swim platform through a water tight access door. Conveniently, there is a shower for one to rinse off on the swim platform.

Forward to port is a guest stateroom with twin lower berths, cedar lined hanging lockers, ensuite head and large shower.

Opposite to starboard is the second guest stateroom with fixed lower berths and a recessed

---

upper berth, beautifully trimmed cabinets, cedar lined closet and ensuite head.

## Engine Room

---

### Main engines

**Twin Detroit Diesel 12V71N's**

**Port engine freshly and fully rebuilt**

**Starboard engine in great shape with 4173 hours**

**New risers in 2009**

**New 32 volt batteries (2013)**

**New 12 volt batteries (2013)**

**New fresh water system (2013)**

**20kw Generator Lights - 2526 hours (new in 1994)**

**30kw Northern Lights Generator - 2705 hours (new in 1994)**

**Stainless Steel fuel tanks (new in 1994)**

## Исключения

---

При продаже яхты исключаются личные вещи владельца.

## Отказ от ответственности

---

Компания предоставляет описание судна или яхты добросовестно, но не может гарантировать точность этой информации, а также не ручается за техническое состояние. Покупатель должен проинструктировать своих агентов или оценщиков исследовать представленную информацию более подробно, по собственному желанию. Продажа судна или яхты, изменение цены или снятие с продажи будет происходить без предварительного уведомления.

# ФОТОГРАФИИ

**Starboard Profile**



**Bow from flybridge**



**Bow facing forward**



**Starboard bow facing forward**



**Bow facing forward**



**Bow facing forward**



**Bow facing aft**



**Bow facing towards port**



**Port aft deck - facing forward**

**Bow facing forward**



**Port facing aft**

**Starboard facing aft from bow**



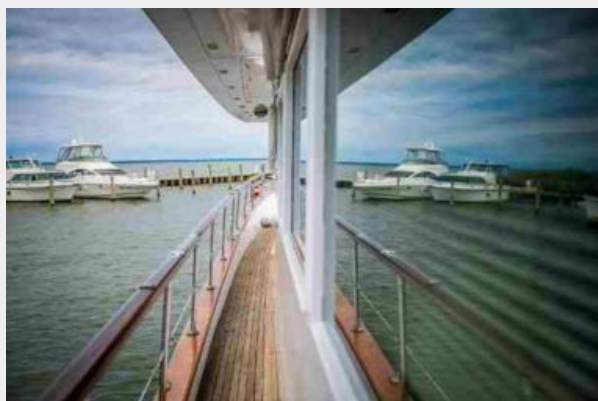
**Port mid-ship facing aft**



**Port facing aft**



**Port facing aft**



**Port facing forward**



**Sundeck helm**

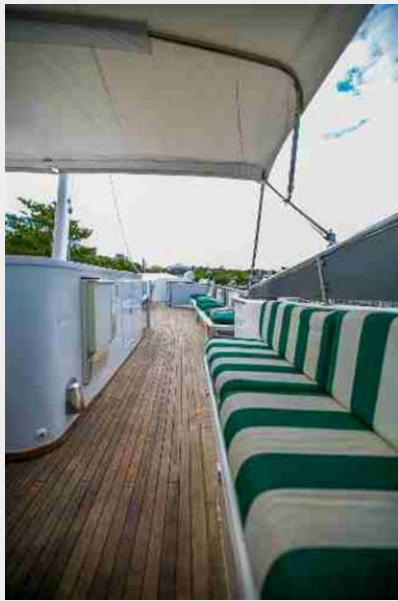


**Sundeck helm station**





**Sundeck facing aft**



**Sundeck wet-bar**



**Sundeck sink**



**Sundeck refrigerator**



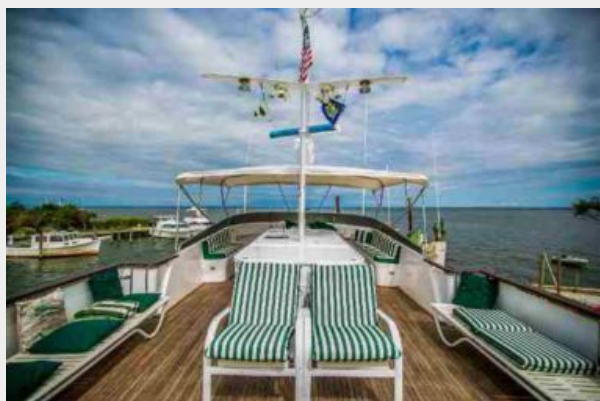
Sundeck - helm station



Sundeck - facing forward



Sundeck - facing forward



Sundeck - helm station



Sundeck - helm station



Sundeck throttle control



Sundeck throttle control



Sundeck - helm station



**Sundeck facing aft**



**Sundeck port side facing forward**



**Access stairs from sundeck to aft seating area**



**Sundeck starboard side facing forward**



**Stairs from aft deck - tender**



**Davit - port facing aft**



**From starboard side facing port - aft deck**



**Aft deck wet-bar**



**Aft deck**



**Aft deck facing from starboard looking toward port**



**Aft deck - facing forward**



**Aft deck facing from starboard to port**



**Aft deck wet bar**



**Starboard facing forward**



**Aft deck - port side stairs to sundeck**



**Aft deck entrance to Salon**



**Main Salon - facing toward starboard**



**Main Salon - facing toward port**



**Main Salon - facing aft**



**Main Salon - facing forward**



**Dinning area - facing toward port**



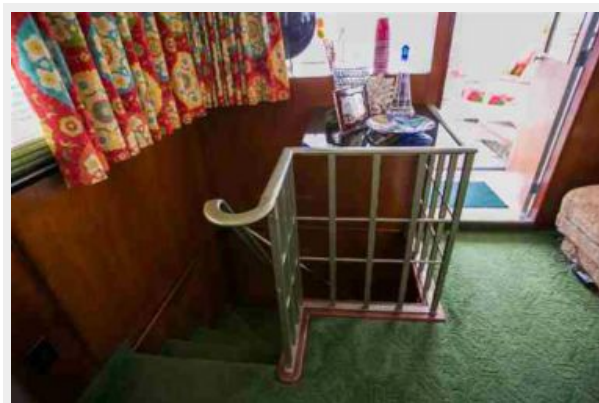
**Dinning area - facing toward starboard**



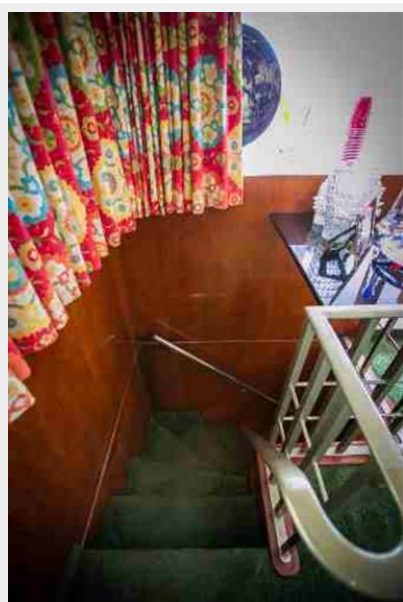
**Dinning area - facing forward**



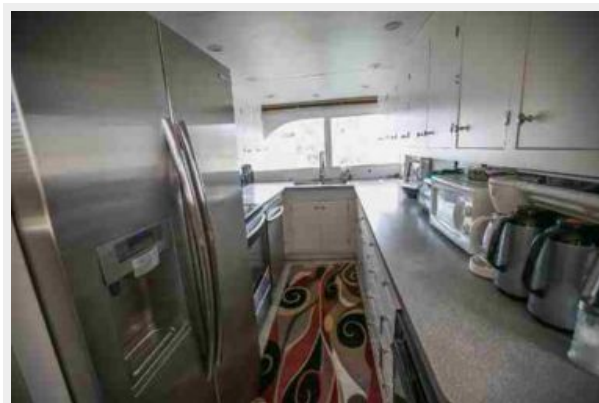
**Stairs to guest cabins - Starboard aft area in salon**



**Main salon stairs to guest quarters**



**Galley facing toward port**





**Galley**



**Galley facing aft**



**Galley**



**Galley**



**Galley facing aft**



**Galley**



**Galley**



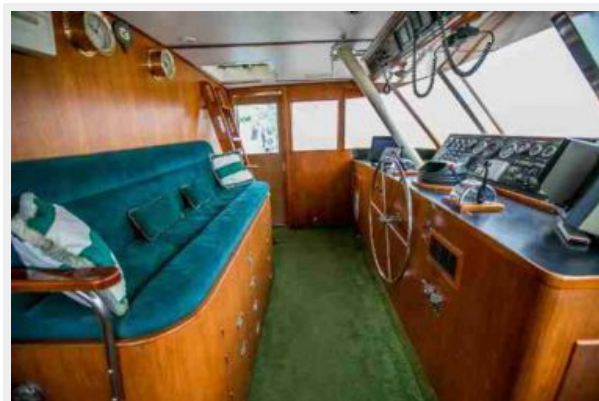
**Galley**



**Starboard - in galley facing forward**



**Pilot house**



**Pilot house**

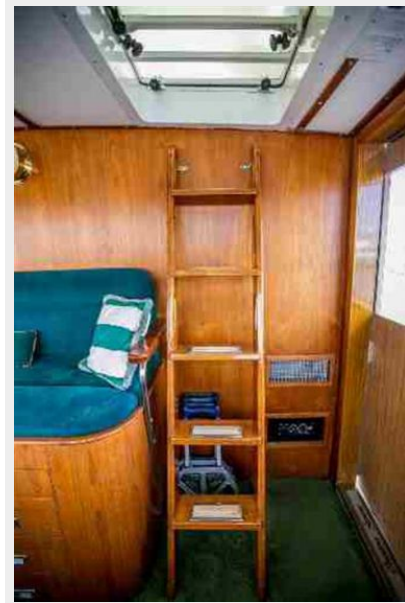


**Pilot house seating**



### Pilot house - starboard ignition

### Pilot house - hatch to sundeck



### Pilot house - port ignition



### Pilot house



**Pilot house**



**Pilot house**



**Pilot house**



**Pilot house**



**Pilot house - port throttle controls**



**Pilot house - starboard throttle controls**



**Pilot house**



**Pilot house**



**Stairs looking up from guest area**

**Pilot house facing starboard**



**Full beam master stateroom**



**Master stateroom facing aft**



**Master stateroom aft port swim platform access**



**Master stateroom facing aft - starboard side**



**Master stateroom facing forward - starboard side**



**Master stateroom entertainment system**



**Master stateroom heater (looks like a fireplace)**

**Master stateroom entertainment system**





**Master stateroom facing aft from en suite head and shower**

**Master stateroom storage**



**Master stateroom head & shower (port side)**

**Master stateroom head & shower**



**Master stateroom sink**



**Master stateroom shower**



**Master stateroom - facing aft**



**Guest area - facing forward**



**Guest area - facing forward**



**Guest area - storage**



**Guest area - storage**



**Guest stateroom - starboard**



**Guest stateroom - starboard**



**Guest stateroom - facing aft**



**Guest stateroom facing forward**



**Guest stateroom facing forward**



**Guest stateroom - head**



**Guest stateroom - head**



**Guest stateroom - head**



**Guest stateroom - head**



**Guest stateroom - port**



**Guest stateroom - port**



**Guest stateroom - port - facing forward**



**Guest stateroom - head & shower**



**Guest stateroom - head & shower**



**Guest stateroom - head & shower**



**Guest stateroom - port**



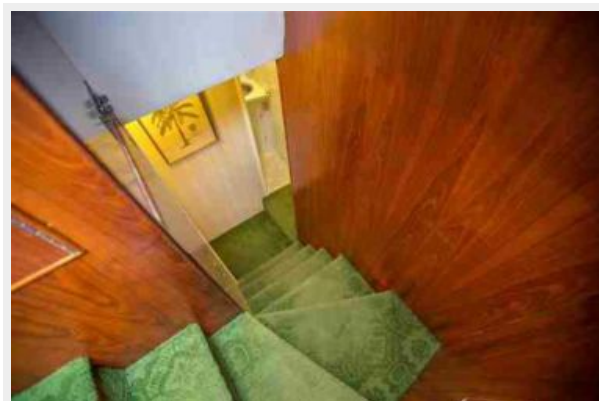
**Guest area - linen closet**



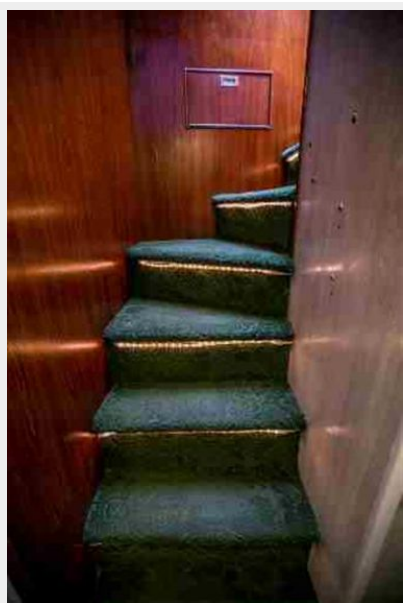
**Guest area - linen closet**



**Crew quarters - stairs from pilot house**



**Crews quarters - stairs from pilot house**



**Crews quarters - facing forward**





**Crews quarters - facing forward**



**Crews quarters head & shower**



**Crews quarters head & shower**



**Crews quarters - galley / salon**



### Crews quarters - Head & shower



### Crews quarters -galley/salon



### Crews quarters - galley/salon



### Captains quarters - port side



**Crews quarters - galley**



**Crews quarters - forward 'V' berth**



**Crews quarters - head & shower**



**Captains quarters - port side**



Crews quarters - forward 'V' berth



Engine room



Engine room



Engine room



Engine room



Engine room



Engine room



Engine room



Engine room



Engine room



Engine Room - 30kw Northern Lights GenSet



Engine room



Engine room - water maker



Engine room



### Engine room - control panel



### Engine room - fresh water system



### Engine room - 30kw Northern Lights GenSet



### Engine room



**Engine room**



**Engine room - eco smart hot water heater**



**Engine room - 30kw Northern Lights GenSet**



**Engine room - 20 kw Northern Lights GenSet**



**Engine room - control panel**



**Engine room**





**Engine room**



**Engine room**



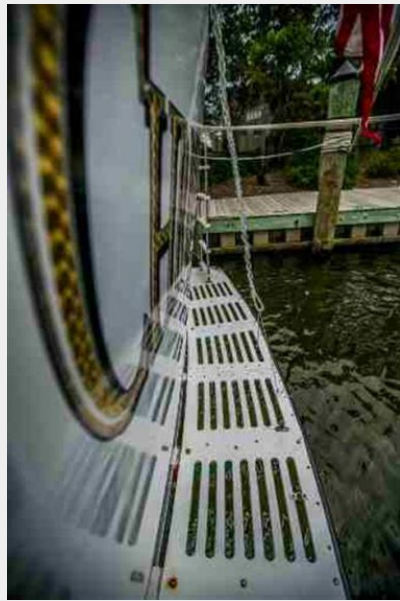
**Engine room**



**Aft swim platform**



### Swim platform



### Broward



### Port profile



# КОНТАКТЫ

---

Андрей Шестаков (Andrey Shestakov) – ведущий яхтенный брокер отдела продаж яхт и судов компании Shestakov Yacht Sales Inc. Официальный представитель Shestakov Yacht Sales Inc. для русскоговорящих клиентов в центральном офисе компании в Майами/Форт Лодердейл/Флорида/США.

## Контактная информация

---

Email: [andrey@shestakovyachtsales.com](mailto:andrey@shestakovyachtsales.com)

Web: [shestakovyachtsales.com](http://shestakovyachtsales.com)

## Телефоны

---

Краснодарский край: **+7(918)465-66-44**

США, Майами, Флорида: **+1(954)274-4435**

## Время работы

---

Понедельник – Суббота: **9:00 - 21:00**  
EDT

Воскресенье: **Закрето**

## Адрес

---



Harbour Towne Marina, 850 NE 3rd St,  
STE 213, Dania, FL 33004