

## SERIOUSLY FOR SALE — CARVER



**Builder:** CARVER

**Year Built:** 2008

**Model:** Motor Yacht

**Price:** PRICE ON APPLICATION

**Location:** United States

**LOA:** 43' 0" (13.11m)

**Beam:** 13' 5" (4.09m)

**Max Draft:** 2' 7" (0.79m)

Our experienced yacht broker, Andrey Shestakov, will help you choose and buy a yacht that best suits your needs **Seriously for Sale — CARVER** from our catalogue. Presently, at Shestakov Yacht Sales Inc., we have a wide variety of yachts available on our sale's list. We also work in close contact with all the big yacht manufacturers from all over the world.

If you would like to buy a yacht **Seriously for Sale — CARVER** or would like help answering any questions concerning purchasing, selling or chartering a yacht, please call **+1(954)274-4435**

# TABLE OF CONTENTS

TABLE OF CONTENTS	2
SPECIFICATIONS	4
Basic Information	4
Dimensions	4
Speed, Capacities and Weight	4
Accommodations	4
Hull and Deck Information	4
Engine Information	4
DETAILED INFORMATION	5
Manufacturer Provided Description	5
Engine Notes	5
Notes	5
Exclusions	7
Disclaimer	7
PHOTOS	8
Helm	8
Helm	8
Salon	8
Salon - Settee	8
Settee	8
Galley	9
Master Stateroom	9
Stateroom	9
Stateroom	9
Aft Cockpit	10
Manufacturer Provided Image	14
Manufacturer Provided Image	14
CONTACTS	15

---

Contact details	15
Telephones	15
Office hours	15
Address	15

# SPECIFICATIONS

## Basic Information

**Category:** Motor Yacht

**Model Year:** 2008

**Year Built:** 2008

**Country:** United States

## Dimensions

**LOA:** 43' 0" (13.11m)

**Beam:** 13' 5" (4.09m)

**Max Draft:** 2' 7" (0.79m)

**Clearance:** 15' 1" (4.60m)

## Speed, Capacities and Weight

**Displacement:** 26000 Pounds

**Water Capacity:** 81 Gallons

**Holding Tank:** 50 Gallons

**Fuel Capacity:** 360 Gallons

## Accommodations

**Total Berths:** 5

**Total Heads:** 2

## Hull and Deck Information

**Hull Material:** Fiberglass

## Engine Information

**Engines:** 2

**Manufacturer:** Crusader

**Model:** 8.1 MPI

**Engine Type:** Inboard

**Fuel Type:** Gas/Petrol

---

# DETAILED INFORMATION

---

## Manufacturer Provided Description

---

The Cockpit Motor Yacht accommodates both stylish entertainment and active aquatic fun. Its generous aft deck features a roomy lounge with seating for six adults and its large cockpit invites all manner of water sport activities.

Generous seating in the open salon enhances the overall comfort level and a face-to-face dinette completes the relaxed living space. The popular design offers two quiet staterooms complemented by two en suite heads.

The tranquil master stateroom includes private sliding-door access to the cockpit for added livability. This exceptional layout is completed with beautiful handcrafted cherry wood furnishings and cabinetry in a superior high gloss wood finish. Our Carver Docking System with bow and stern thrusters comes standard and a newly designed flybridge hardtop is available to the owner's preference.

## Engine Notes

---

Crusader 8.1 MPI Captains Choice

## Notes

---

### Interior Features

- Two stateroom, two head layout
- L-Shaped salon sofa
- Salon TV and entertainment center
- Salon barrel chair
- Large windows
- Central vacuum
- Air conditioning and heat

### Galley

- Booth style seating
- Amtico flooring
- Refrigerator and freezer
- Microwave oven
- 3-Burner stove top
- Corian countertop
- Cabinet storage

## Master Stateroom

- Full beam aft
- Island berth
- 13" TV / Stereo
- Hanging locker
- Sliding doors to cockpit
- Air conditioning and heat
- Ensuite head

## Master Head

- Corian vanity top
- Vacuflush head
- Medicine cabinet
- Stall shower

## Guest Stateroom

- Forward stateroom
- Hanging locker
- Air conditioning and heat

## Guest Head

- Corian vanity top
- Vacuflush head
- Medicine cabinet with mirror

## Cockpit & Deck

- Hot and cold shower
- Fender racks
- Aft hardtop
- Full enclosure
- Wing doors
- Aft bench seating
- Sink
- ( 2 ) Helm seats
- Sunpads forward
- Anchor windlass
- 50AMP Service
- 7.3kw Generator
- Oil change system

- Fire Boy system
- Swim platform
- Transom door

## Electronics

- Northstar 6100 chart plotter
- 4kw Radar
- 491 Northstar sounder
- VHF Horizon
- Bow & stern thruster

## Exclusions

---

Owner's personal belongings.

## Disclaimer

---

The Company offers the details of this vessel or yacht in good faith but cannot guarantee or warrant the accuracy of this information nor warrant the condition of the vessel. A buyer should instruct his representatives, agents, or his surveyors, to investigate such details as the buyer desires validated. This vessel or yacht is offered subject to prior sale, price change, or withdrawal without notice.

# PHOTOS

Helm



Helm



Salon



Salon - Settee



Settee







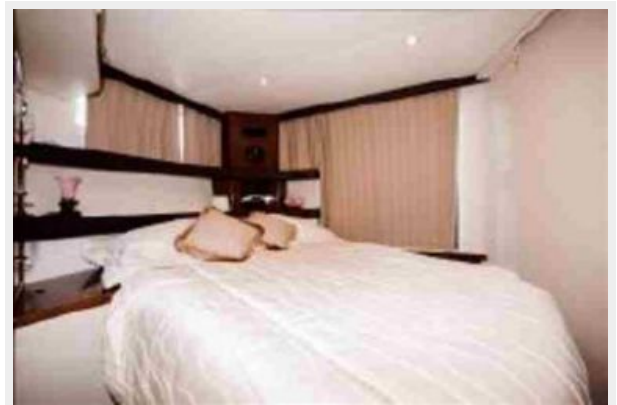
Galley



Master Stateroom



Stateroom



Stateroom





### Aft Cockpit











**Manufacturer Provided Image**



**Manufacturer Provided Image**



# CONTACTS

Andrey Shestakov, leading yacht broker of the sales department of Shestakov Yacht Sales Inc. Shestakov Yacht Sales Inc., the official representative of the Miami/Fort Lauderdale FL headquarters.

## Contact details

Email: [andrey@shestakovyachtsales.com](mailto:andrey@shestakovyachtsales.com)

Web: [shestakovyachtsales.com/en/](http://shestakovyachtsales.com/en/)

## Telephones

USA: +1(954)274-4435

## Office hours

Monday – Saturday: **9:00 - 21:00** EDT

Sunday: **closed**

## Address



Harbour Towne Marina, 850 NE 3rd St,  
STE 213, Dania, FL 33004