

ANGELA J — NORDHAVN



Builder: NORDHAVN

Year Built: 2008

Model: Trawler

Price: PRICE ON APPLICATION

Location: Mexico

LOA: 56' 1" (17.09m)

Beam: 18' 0" (5.49m)

Min Draft: 6' 6" (1.98m)

Cruise Speed: 9 Kts. (10 MPH)

Our experienced yacht broker, Andrey Shestakov, will help you choose and buy a yacht that best suits your needs **Angela J — NORDHAVN** from our catalogue. Presently, at Shestakov Yacht Sales Inc., we have a wide variety of yachts available on our sale's list. We also work in close contact with all the big yacht manufacturers from all over the world.

If you would like to buy a yacht **Angela J — NORDHAVN** or would like help answering any questions concerning purchasing, selling or chartering a yacht, please call **+1(954)274-4435**

TABLE OF CONTENTS

TABLE OF CONTENTS	2
SPECIFICATIONS	4
Overview	4
Basic Information	7
Dimensions	7
Speed, Capacities and Weight	7
Accommodations	7
Hull and Deck Information	7
Engine Information	8
PHOTOS	9
Cockpit table	9
At the dock	9
Dinette	9
Starburst table	9
Saloon	9
Saloon to Starboard	9
Pop up TV in Saloon	10
Saloon TV down	10
Galley	10
Galley from Saloon	10
Pilothouse 2	11
Pilothouse looking port	11
Helm Seat	11
Helm	11
Electrical Panel	12
Pilothouse sattee	12
Master Cabin	12
Master Stateroom	12

Master Head	13
VIP	13
VIP Head	13
Laundry	13
Stairs to Boat Deck	14
Boat Deck	14
Boat Deck up to Fly Bridge	14
Fly Bridge	14
Fly Bridge Helm	15
Fly Bridge aft	15
Main Engine	15
CONTACTS	16
Contact details	16
Telephones	16
Office hours	16
Address	16

SPECIFICATIONS

Overview

Accommodations:

The cockpit opens directly to the main saloon. This design effectively expands the living area from the outside to inside. The asymmetrical cabin design allows for a wider main saloon and galley and features a wide side deck on the starboard side.

A large, L-shaped settee and beautifully finished teak table are adjacent to two comfortable reading chairs. Two bar chairs face the pass-through counter top in the galley, which is two steps down from the saloon. The TV is in the Bar countertop and is fully retractable.

The owner's stateroom is on the same level as the galley, and it is located amidships, where the motion is least objectionable during passages and while at anchor. The Master cabin has a queen sized, walk-around bed. There are many drawers and two hanging lockers and a wall mount TV. The spacious head has a shower/bath tub granite finished sink and TECMA electric head.

Forward is the spacious VIP cabin with double sized berth, huge hanging locker, office area with desk & chair and private head with separate stall shower.

Up from the Galley & Saloon is the Pilothouse and L-shaped settee. It has a full suite of electronics and doors on both sides to the boat deck, Portuguese bulkhead and bow.

Up the ladder from the Boat Deck is the Fly Bridge and second complete helm station. There is also a wonderful settee and BBQ. **Saloon & Galley:** The Saloon is easy access from the Cockpit and has a beautiful L-shaped dinette to port and (2) comfortable chairs to Starboard.

- Air conditioning
- Saloon settee - Ultra Leather 291-3925 'Silk'
- AIRTEX TV Lift for 42" TV located on galley counter
- Beautiful Star Burst designed saloon table
- Entertainment / wine locker cabinets w/ frosted glass
- Teak & Holly floors

With full-sized home-style appliances, abundant storage cabinets and generous counter space, the galley will please the most demanding chef.

- SUB-ZERO refrigerator with icemaker
- 4-burner THERMADORE stove and oven
- GE microwave/convection oven
- BROAN trash compactor
- G.E. dishwasher
- GE top-load freezer

- Granite counter tops
- Garbage disposal w/ 3-way valve for direct overboard discharge
- Teak & Holly floors

Pilothouse:

The Pilothouse is located amidships, up from the Galley, for minimal motion at sea. It provides excellent, 360 degree visibility. A full-sized helm chair puts the captain comfortably in command of his ship, with all electronics and controls within sight and in reach. Aft of the helm chair is an L-shaped settee and table, elevated for superior visibility and will seat three to four crew members. Beneath the settee are full-sized chart drawers and additional storage.

- Beautiful Star Burst designed pilothouse table
- Teak & Holly floors

Also a special feature of the N55's pilothouse is it's private stateroom complete with head and double-sized berth. Perfect for the off-watch crew on long passages, this area will also serve as a private guest stateroom.

- MATHERS controls in wheelhouse and fly bridge
- Port & starboard wing controls on Portuguese bridge w/ fiberglass doors

Electronics:

- (3) FURUNO MU170C monitors
- FURUNO FA 150 AIS Transponder
- FURUNO AIS PLT-PLG w/ cable
- FURUNO MFDBB multifunction display processor
- FURUNO DRS12A
- FURUNO DRS6A
- FURUNO HUB 101
- FURUNOXN13A/6 antenna
- FURUNO MFD 12
- FURUNO DFF1
- FURUNO F1501
- FURUNO PB150
- FURUNO 235DGT-MSE transducer
- 2, FURUNO RD30
- KVH FB 250 TRAC phone
- FLIR Thermo vision Navigator camera
- (2) SIMRAD AP50 Autopilots
- SIMRAD RI35 Mk2 Rudder Indicator
- SIMRAD FU50
- SIMRAD RC25 rate compass
- 2, ACCUSTEER HPU212-200 Steering Pumps
- ACR Global Fix Cat 1 EPIRB

- 2, ICOM VHF 602 with Remote Command Mic
- FURUNO SC30 Sat .Compass
- NOBLETEC navigation center

Engines & Engine Room:

Main propulsion is provided by the upgraded LUGGER L1276A.2C, 340 hp diesel engine that turns a 3 1/2-inch AQUAMET shaft via a 4:1 reduction ZF transmission. This amount of reduction allows the 40" prop to turn slowly, greatly reducing noise and vibration. A dry exhaust, a signature design element of Nordhavns, eliminates the need for a large through-hull and raw water pump, greatly reducing the risk of failure at sea.

- LUGGER 1276 Main Engine (707.4 hours)
- LUGGER L-984D wing engine (118 hours)
- Wing engine backup drive w/ folding propeller
- (2) 24v alternators on main engine
- 24v alternator on wing engine
- Hydraulic system: ABT 250 stabilizers, hydraulic windlass, 25hp bow and stern thrusters, with redundant hydraulic pumps
- SEAFIRE fire system - in engine room
- SEAFIRE fire system - in lazarette
- Oil change system

Fly Bridge & Deck:

Fly Bridge:

- Fiberglass hard top w/ SS supports
- 2 STIDD chairs
- FORCE 10 BBQ

Equipment:

- STEELHEAD davit upgrade
- GLENDINNING shore power cord
- SPURS line cutter
- Swim platform extension
- Underwater lights
- La Cruz Shipyard painted hull May 2014
- Bottom painted May 2014
- VILLAGE MARINE water maker SPW600
- BOSCH washer
- BOSCH dryer

Thank you to C-Images for the beautiful photography of this vessel.

Basic Information

Category: Trawler

Sub Category: Long Range Cruiser

Model Year: 2008

Year Built: 2008

Country: Mexico

Fly Bridge: Yes

Cockpit: Yes

Dimensions

LOA: 56' 1" (17.09m)

LWL: 50' 10" (15.49m)

Beam: 18' 0" (5.49m)

Min Draft: 6' 6" (1.98m)

Speed, Capacities and Weight

Cruise Speed: 9 Kts. (10 MPH)

Cruise Speed Range: 1500

Displacement: 115000 Pounds

Water Capacity: 600 Gallons

Holding Tank: 120 Gallons

Fuel Capacity: 2250 Gallons

Accommodations

Total Cabins: 3

Total Heads: 3

Captain Cabin: True

Hull and Deck Information

Hull Material: Fiberglass

Engine Information

Engines: 1

Manufacturer: Luger

Model: L1276A.2C

PHOTOS

At the dock



Cockpit table



Dinette



Starburst table



Saloon



Saloon to Starboard



Saloon TV down



Pop up TV in Saloon



Galley from Saloon



Galley



Pilothouse 2



Pilothouse looking port



Helm Seat

Helm



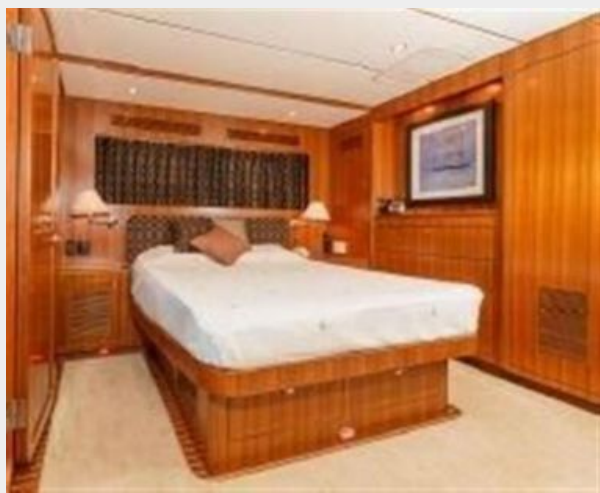
Pilothouse sattee



Electrical Panel



Master Stateroom



Master Cabin



Master Head



VIP



VIP Head



Laundry



Stairs to Boat Deck



Boat Deck



Boat Deck up to Fly Bridge



Fly Bridge



Fly Bridge aft



Fly Bridge Helm



Main Engine



CONTACTS

Andrey Shestakov, leading yacht broker of the sales department of Shestakov Yacht Sales Inc. Shestakov Yacht Sales Inc., the official representative of the Miami/Fort Lauderdale FL headquarters.

Contact details

Email: andrey@shestakovyachtsales.com

Web: shestakovyachtsales.com/en/

Telephones

USA: +1(954)274-4435

Office hours

Monday – Saturday: **9:00 - 21:00** EDT

Sunday: **closed**

Address



Harbour Towne Marina, 850 NE 3rd St,
STE 213, Dania, FL 33004