

WATERSIDE — UNITED BOAT BUILDERS



Builder: UNITED BOAT BUILDERS

Year Built: 1984

Model: Trawler

Price: PRICE ON APPLICATION

Location: United States

LOA: 38' 0" (11.58m)

Beam: 12' 8" (3.86m)

Cruise Speed: 8 Kts. (9 MPH)

Our experienced yacht broker, Andrey Shestakov, will help you choose and buy a yacht that best suits your needs **Waterside — UNITED BOAT BUILDERS** from our catalogue. Presently, at Shestakov Yacht Sales Inc., we have a wide variety of yachts available on our sale's list. We also work in close contact with all the big yacht manufacturers from all over the world.

If you would like to buy a yacht **Waterside — UNITED BOAT BUILDERS** or would like help answering any questions concerning purchasing, selling or chartering a yacht, please call **+1(954)274-4435**

TABLE OF CONTENTS

TABLE OF CONTENTS	2
SPECIFICATIONS	3
Overview	3
Basic Information	4
Dimensions	4
Speed, Capacities and Weight	4
Accommodations	4
Hull and Deck Information	4
Engine Information	5
DETAILED INFORMATION	6
Equipment and Features	6
Interior Description	9
Exterior Description	9
Exclusions	10
Disclaimer	10
PHOTOS	11
CONTACTS	18
Contact details	18
Telephones	18
Office hours	18
Address	18

SPECIFICATIONS

Overview

1984 United Ocean Classic (This United Ocean 38' Double Cabin Trawler was built by Fu Hwa Shipyard in Taipei, Taiwan)

This is a very clean / well maintained trawler with many upgrades completed in the last 7 years by very knowledgeable owners.

"Waterside" is very economical to operate with Twin Perkins 135 HP diesels. Generator and dual A/C units make it comfortable for cruising or live-aboard year round. Interior teak is in excellent condition. Plenty of space for watching sunsets on the upper decks...

TRADES MAY BE CONSIDERED (35' to 41' High performance twin engine powerboats such as Formulas, Fountains and Cigarettes)

BROKER COMMENTS

This is a must see trawler...even though it is seriously for sale it is still being maintained and upgraded to the highest industry standards...

2015

New Icemaker

2014

Bottom Job

Hull Waxed

Lower deck sealed and painted with non-skid

Blue stripe repainted

New 32" JVC TV

New JL Audio 1000 Watt System with 4 speakers and 12" subwoofer

New Raymarine E127 Hybrid Touch-screen GPS

Fuel Injectors rebuilt

2011 Custom queen size mattress in master cabin New injector pump Teak decks recaulked & replugged Full oil change & filters on both engines & genset

2010 New refrigerator New interior cushions

2009 All new canvas & ison glass All new batteries & cables

Basic Information

Category: Trawler

Sub Category: Double Cabin

Model Year: 1984

Year Built: 1984

Country: United States

Dimensions

LOA: 38' 0" (11.58m)

Beam: 12' 8" (3.86m)

Clearance: 18' 0" (5.49m)

Speed, Capacities and Weight

Cruise Speed: 8 Kts. (9 MPH)

Displacement: 22000 Pounds

Water Capacity: 200 Gallons

Holding Tank: 26 Gallons

Fuel Capacity: 400 Gallons

Accommodations

Total Cabins: 2

Hull and Deck Information

Hull Material: Fiberglass

Engine Information

Engines: 2

Manufacturer: Perkins

Engine Type: Inboard

Fuel Type: Diesel

DETAILED INFORMATION

Equipment and Features

Main Salon / Lower Helm Station

- Air-conditioning 16000 BTU
- New cushions 2010
- Folding Hi-low dining table makes into bed when lowered
- 12V and 110V lighting
- LED rope lights above window
- AM/FM/CD stereo - new 2014
- Engine room access thru floor hatches or forward steps
- Lower Helm with folding bench seat
- Full instrumentation
- Icom IC-M402 VHF
- Aquamarine compass
- 32" JVC Flatscreen TV
- 12 Volt/110 Volt Electrical panel

Galley

- Large Norcold refrigerator/freezer New in 2010
- Magic Chef 3 burner propane stove
- Stainless sink
- Hot and cold pressure water
- Microwave oven
- Coffee Pot
- Exhaust Fan
- Plenty of storage
- Separate Ice Maker - new 2015

Master Stateroom/ Head

- Air-conditioning 16,000 BTU split unit between the two staterooms
- Custom innerspring mattress
- Opening hatch to deck with sunbrella cover and screen
- Electric toilet with new macerator 2012
- Tub/shower
- Sink with vanity
- Hot and cold pressure water
- 12V and 110V lighting
- 2 hanging lockers, one with shelves also
- Various drawers and lockers for storage

Guest Stateroom/ Head

- Air-conditioning, Split unit with master stateroom
- Opening hatch to deck with sunbrella cover and screen
- Large hanging locker with shelves
- Drawer storage
- Rope locker access
- Manual toilet
- Shower
- Sink with vanity
- Hot and cold pressure water
- 12V and 110V lighting

Deck

- Teak decks, re-plugged in 2009
- Maxwell electric windlass New 2012
- Windlass foot controls for up and down mounted at windlass
- 44 pound CQR with 250' chain, New 2012
- 40 Pound Delta with rode
- Navigation lights
- Dockside electrical connections
- Dockside water connection
- Freshwater wash down system on Stern
- Teak Swim platform
- Folding swim ladder
- Teak frame around windows and doors has been painted. Teak hand rails in great shape.
- Stainless Steel ports with screens
- Fiberglass dock box affixed to aft deck
- Dingy Davits (Included - currently off the boat)
- Textalin covers for salon windows
- Suncover for front window
- 10 Life jackets
- 2 complete sets of dock lines and fenders
- Air Horn

Flybridge Helm and Electronics

- Bimini top and 3 sided eisinglass - New 2014
- Lower deck has Bimini New 2009 (Included - currently off the boat)
- Side curtains on lower deck New 2009
- Teak Table on Flybridge
- Tach and engine warning lights
- Raymarine E127 Hybrid TouchScreen GPS
- Datamarine depth finder

- Autohelm 6000 Auto pilot (Not connected to GPS)
- Ritchie compass
- Remote VHF hand control
- JL Audio 1000 Watt Stereo, with 4 speakers and 12" subwoofer

Electrical

- AC/DC electrical panel with breakers and volt meters
- 8KW Westerbeke WMD-8.0 generator, 2700 hours
- 4- 6 Volt House batteries - new 2013
- 1- 8D starting battery - new 2013
- 1- Group 27 battery for generator - new 2014
- 60 amp battery charger
- 2 30 amp 50' dockside electrical cables - new 2012
- 1 50 amp splitter
- Generator water pump - new 2014

Engine Details and Mechanical Equipment

- Twin Perkins 135 HP FWC diesel engines. Burns approx. 3.5 gallons per hr @ 1600 RPM's. That's better than 2 miles to the gallon!
- Both engine water pumps - new 2015
- New Injector Pump - new 2010
- Both engines and Genset have been recently serviced with oil change and filters
- Bridge & cabin engine controls
- Full instrumentation
- New Starboard starter - new 2012
- Raw water sea strainers
- 12 Volt Blower
- Rudder posts repacked 2012
- Stuffing boxes repacked 2012
- Seaward Stainless steel 11 Gallon 120 VAC hot water heater
- Engine temperature alarm
- Johnson 500 GPH Automatic bilge pump in forward bilge - new 2012
- Rule 1500 GPH Automatic bilge pump in engine room
- Rule 360 GPH Automatic bilge pump shower sump
- Manual Bilge pump
- Sight gauges on both fuel tanks
- Fuel tanks fiberglass coated
- 2 Air conditioners, both 16K BTU serviced and flushed 07-2012
- 200 gallon water in 2 tanks
- 3 hand held fire extinguishers
- 24 Gal holding tank with deck pump out and macerator
- Racor 500 fuel filters for Perkins
- Borg Warner Velvet Drive 2:1 Transmissions

- Spreader lights on mast
- Steering system rebuilt in 2013
- Numerous hoses, Racor primary filters, secondary filters and oil filters
- Complete set of hoses for the generator

Exclusions

- Tools
- Personal Items (clothes, foul weather gear, musical instruments, etc.)

Interior Description

Forward Cabin

The forward guest cabin has a v-berth, and private on-suite head with shower to port. Drawers and storage locker under v-berth. There is a large hanging locker to starboard.

Main Salon

Aft of the guest cabin and up two steps is the salon with lower helm forward to starboard which has complete instrumentation. Electrical panel and a sliding door to Starboard for deck access. Aft on the starboard side is a custom built in settee with 2 drawers under for storage.

Galley

The fully equipped Galley has a full size A/C- D/C Norcold refrigerator new in 2010. The oversized Norcold is excellent for extended cruising. Forward to port is an "L" shaped dinette with new updated upholstery in 2011, and high/low dinette table that converts to a sleeping berth for two. An access door is to port aft and the entire area is finished with parquet floors. Aft of the door is an Uline Ice maker inside a custom locker.

Rear/Master Cabin

Aft and down two steps is the large master cabin with a center line queen with custom innerspring folding mattress. Built-in vanity to starboard. Built-in drawers and storage on portside. Two large hanging lockers. Bookshelves across the aft side of the berth. The on-suite head with tub/shower is forward to starboard. All the interior teak is in excellent shape with no staining.

Exterior Description

Decks

Waterside has wide side decks that offer easy access fore and aft. An aft deck that gives access to the swim platform and the trunk cabin which leads to the large flying bridge.

Flying Bridge

The flying bridge is large with plenty of space for entertaining or lounging. Bench seats with storage under are both port and starboard.

Exclusions

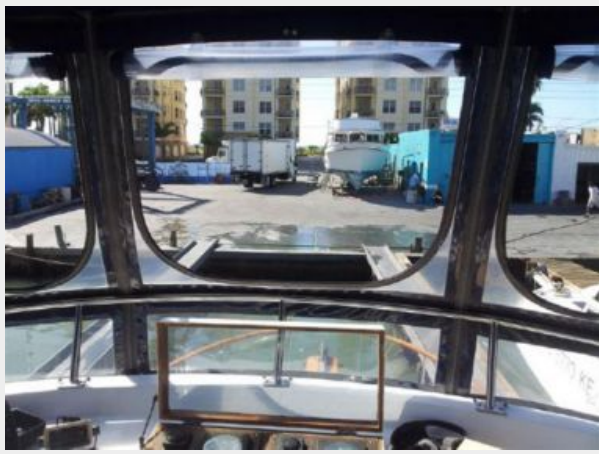
Owner's personal belongings.

Disclaimer

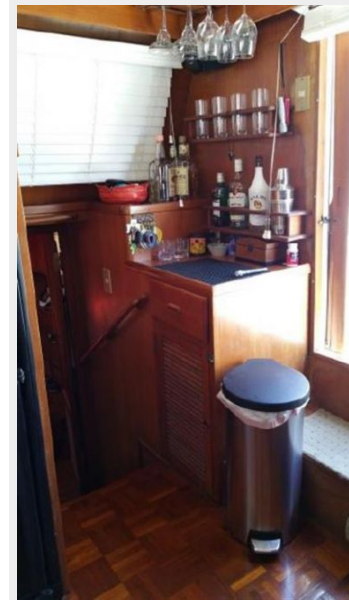
The Company offers the details of this vessel or yacht in good faith but cannot guarantee or warrant the accuracy of this information nor warrant the condition of the vessel. A buyer should instruct his representatives, agents, or his surveyors, to investigate such details as the buyer desires validated. This vessel or yacht is offered subject to prior sale, price change, or withdrawal without notice.

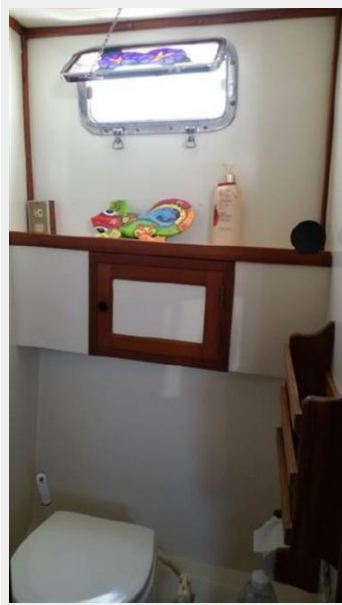
PHOTOS

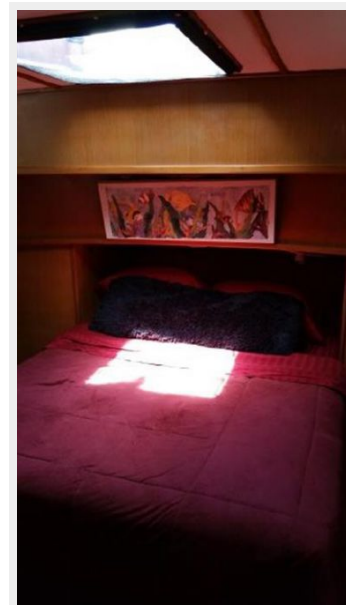
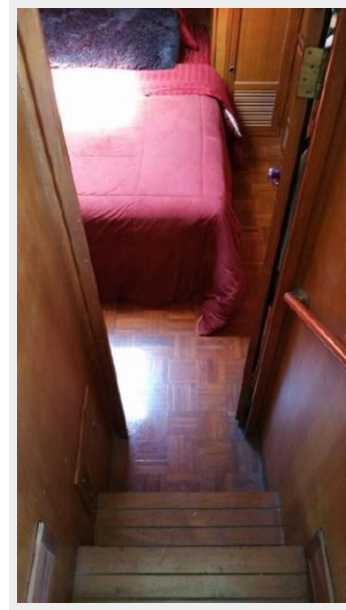














CONTACTS

Andrey Shestakov, leading yacht broker of the sales department of Shestakov Yacht Sales Inc. Shestakov Yacht Sales Inc., the official representative of the Miami/Fort Lauderdale FL headquarters.

Contact details

Email: andrey@shestakovyachtsales.com

Web: shestakovyachtsales.com/en/

Telephones

USA: +1(954)274-4435

Office hours

Monday – Saturday: **9:00 - 21:00** EDT

Sunday: **closed**

Address



Harbour Towne Marina, 850 NE 3rd St,
STE 213, Dania, FL 33004