

WATERSIDE — UNITED BOAT BUILDERS



Судостроитель:
UNITED BOAT BUILDERS

Год постройки: 1984

Модель: Траулер

Цена: ЦЕНА ЯХТЫ ПО ЗАПРОСУ

Местонахождение: United States

Длина общая: 38' 0" (11.58m)

Ширина: 12' 8" (3.86m)

Крейс. скорость: 8 Kts. (9 MPH)

Купить Waterside — UNITED BOAT BUILDERS а также выбрать подходящую вам яхту из нашего каталога яхт вам поможет опытный яхтенный брокер Андрей Шестаков. На сегодняшний день компания Shestakov Yacht Sales Inc. имеет большое количество яхт в собственном списке продаж, а также тесно сотрудничает со всеми крупными яхтенными производителями по всему миру.

Для того чтобы купить яхту Waterside — UNITED BOAT BUILDERS а также проконсультироваться по любому вопросу связанному с покупкой, продажей, чартером яхт позвоните по телефону **+7(918)465-66-44**.

ОГЛАВЛЕНИЕ

ОГЛАВЛЕНИЕ	2
ХАРАКТЕРИСТИКИ	3
Обзор	3
Основная информация	4
Размеры	4
Скорость, вместимость и масса	4
Размещение	4
Корпус и палуба	4
Информация о двигателе	5
ПОДРОБНОЕ ОПИСАНИЕ	6
Equipment and Features	6
Interior Description	9
Exterior Description	9
Исключения	10
Отказ от ответственности	10
ФОТОГРАФИИ	11
КОНТАКТЫ	18
Контактная информация	18
Телефоны	18
Время работы	18
Адрес	18

ХАРАКТЕРИСТИКИ

Обзор

1984 United Ocean Classic (This United Ocean 38' Double Cabin Trawler was built by Fu Hwa Shipyard in Taipei, Taiwan)

This is a very clean / well maintained trawler with many upgrades completed in the last 7 years by very knowledgeable owners.

"Waterside" is very economical to operate with Twin Perkins 135 HP diesels. Generator and dual A/C units make it comfortable for cruising or live-aboard year round. Interior teak is in excellent condition. Plenty of space for watching sunsets on the upper decks...

TRADES MAY BE CONSIDERED (35' to 41' High performance twin engine powerboats such as Formulas, Fountains and Cigarettes)

BROKER COMMENTS

This is a must see trawler...even though it is seriously for sale it is still being maintained and upgraded to the highest industry standards...

2015

New Icemaker

2014

Bottom Job

Hull Waxed

Lower deck sealed and painted with non-skid

Blue stripe repainted

New 32" JVC TV

New JL Audio 1000 Watt System with 4 speakers and 12" subwoofer

New Raymarine E127 Hybrid Touch-screen GPS

Fuel Injectors rebuilt

2011 Custom queen size mattress in master cabin New injector pump Teak decks recaulked & replugged Full oil change & filters on both engines & genset

2010 New refrigerator New interior cushions

2009 All new canvas & ison glass All new batteries & cables

Основная информация

Тип судна: Траулер

Подкатегория: Double Cabin

Модельный год: 1984

Год постройки: 1984

Страна: United States

Размеры

Длина общая: 38' 0" (11.58m)

Ширина: 12' 8" (3.86m)

Трапы: 18' 0" (5.49m)

Скорость, вместимость и масса

Крейс. скорость: 8 Kts. (9 MPH)

Водоизмещение: 22000 Pounds

Вместимость воды: 200 Gallons

Вместимость сточного бака: 26 Gallons

Объем топливного бака: 400 Gallons

Размещение

Всего кают: 2

Корпус и палуба

Материал корпуса: Fiberglass

Информация о двигателе

Двигатели: 2

Производитель: Perkins

Тип двигателя: Inboard

Тип топлива: Diesel

ПОДРОБНОЕ ОПИСАНИЕ

Equipment and Features

Main Salon / Lower Helm Station

- Air-conditioning 16000 BTU
- New cushions 2010
- Folding Hi-low dining table makes into bed when lowered
- 12V and 110V lighting
- LED rope lights above window
- AM/FM/CD stereo - new 2014
- Engine room access thru floor hatches or forward steps
- Lower Helm with folding bench seat
- Full instrumentation
- Icom IC-M402 VHF
- Aquamarine compass
- 32" JVC Flatscreen TV
- 12 Volt/110 Volt Electrical panel

Galley

- Large Norcold refrigerator/freezer New in 2010
- Magic Chef 3 burner propane stove
- Stainless sink
- Hot and cold pressure water
- Microwave oven
- Coffee Pot
- Exhaust Fan
- Plenty of storage
- Separate Ice Maker - new 2015

Master Stateroom/ Head

- Air-conditioning 16,000 BTU split unit between the two staterooms
- Custom innerspring mattress
- Opening hatch to deck with sunbrella cover and screen
- Electric toilet with new macerator 2012
- Tub/shower
- Sink with vanity
- Hot and cold pressure water
- 12V and 110V lighting
- 2 hanging lockers, one with shelves also
- Various drawers and lockers for storage

Guest Stateroom/ Head

- Air-conditioning, Split unit with master stateroom
- Opening hatch to deck with sunbrella cover and screen
- Large hanging locker with shelves
- Drawer storage
- Rope locker access
- Manual toilet
- Shower
- Sink with vanity
- Hot and cold pressure water
- 12V and 110V lighting

Deck

- Teak decks, re-plugged in 2009
- Maxwell electric windlass New 2012
- Windlass foot controls for up and down mounted at windlass
- 44 pound CQR with 250' chain, New 2012
- 40 Pound Delta with rode
- Navigation lights
- Dockside electrical connections
- Dockside water connection
- Freshwater wash down system on Stern
- Teak Swim platform
- Folding swim ladder
- Teak frame around windows and doors has been painted. Teak hand rails in great shape.
- Stainless Steel ports with screens
- Fiberglass dock box affixed to aft deck
- Dingy Davits (Included - currently off the boat)
- Textalin covers for salon windows
- Suncover for front window
- 10 Life jackets
- 2 complete sets of dock lines and fenders
- Air Horn

Flybridge Helm and Electronics

- Bimini top and 3 sided eisinglass - New 2014
- Lower deck has Bimini New 2009 (Included - currently off the boat)
- Side curtains on lower deck New 2009
- Teak Table on Flybridge
- Tach and engine warning lights
- Raymarine E127 Hybrid TouchScreen GPS
- Datamarine depth finder

- Autohelm 6000 Auto pilot (Not connected to GPS)
- Ritchie compass
- Remote VHF hand control
- JL Audio 1000 Watt Stereo, with 4 speakers and 12" subwoofer

Electrical

- AC/DC electrical panel with breakers and volt meters
- 8KW Westerbeke WMD-8.0 generator, 2700 hours
- 4- 6 Volt House batteries - new 2013
- 1- 8D starting battery - new 2013
- 1- Group 27 battery for generator - new 2014
- 60 amp battery charger
- 2 30 amp 50' dockside electrical cables - new 2012
- 1 50 amp splitter
- Generator water pump - new 2014

Engine Details and Mechanical Equipment

- Twin Perkins 135 HP FWC diesel engines. Burns approx. 3.5 gallons per hr @ 1600 RPM's. That's better than 2 miles to the gallon!
- Both engine water pumps - new 2015
- New Injector Pump - new 2010
- Both engines and Genset have been recently serviced with oil change and filters
- Bridge & cabin engine controls
- Full instrumentation
- New Starboard starter - new 2012
- Raw water sea strainers
- 12 Volt Blower
- Rudder posts repacked 2012
- Stuffing boxes repacked 2012
- Seaward Stainless steel 11 Gallon 120 VAC hot water heater
- Engine temperature alarm
- Johnson 500 GPH Automatic bilge pump in forward bilge - new 2012
- Rule 1500 GPH Automatic bilge pump in engine room
- Rule 360 GPH Automatic bilge pump shower sump
- Manual Bilge pump
- Sight gauges on both fuel tanks
- Fuel tanks fiberglass coated
- 2 Air conditioners, both 16K BTU serviced and flushed 07-2012
- 200 gallon water in 2 tanks
- 3 hand held fire extinguishers
- 24 Gal holding tank with deck pump out and macerator
- Racor 500 fuel filters for Perkins
- Borg Warner Velvet Drive 2:1 Transmissions

- Spreader lights on mast
- Steering system rebuilt in 2013
- Numerous hoses, Racor primary filters, secondary filters and oil filters
- Complete set of hoses for the generator

Exclusions

- Tools
- Personal Items (clothes, foul weather gear, musical instruments, etc.)

Interior Description

Forward Cabin

The forward guest cabin has a v-berth, and private on-suite head with shower to port. Drawers and storage locker under v-berth. There is a large hanging locker to starboard.

Main Salon

Aft of the guest cabin and up two steps is the salon with lower helm forward to starboard which has complete instrumentation. Electrical panel and a sliding door to Starboard for deck access. Aft on the starboard side is a custom built in settee with 2 drawers under for storage.

Galley

The fully equipped Galley has a full size A/C- D/C Norcold refrigerator new in 2010. The oversized Norcold is excellent for extended cruising. Forward to port is an "L" shaped dinette with new updated upholstery in 2011, and high/low dinette table that converts to a sleeping berth for two. An access door is to port aft and the entire area is finished with parquet floors. Aft of the door is an Uline Ice maker inside a custom locker.

Rear/Master Cabin

Aft and down two steps is the large master cabin with a center line queen with custom innerspring folding mattress. Built-in vanity to starboard. Built-in drawers and storage on portside. Two large hanging lockers. Bookshelves across the aft side of the berth. The on-suite head with tub/shower is forward to starboard. All the interior teak is in excellent shape with no staining.

Exterior Description

Decks

Waterside has wide side decks that offer easy access fore and aft. An aft deck that gives access to the swim platform and the trunk cabin which leads to the large flying bridge.

Flying Bridge

The flying bridge is large with plenty of space for entertaining or lounging. Bench seats with storage under are both port and starboard.

Исключения

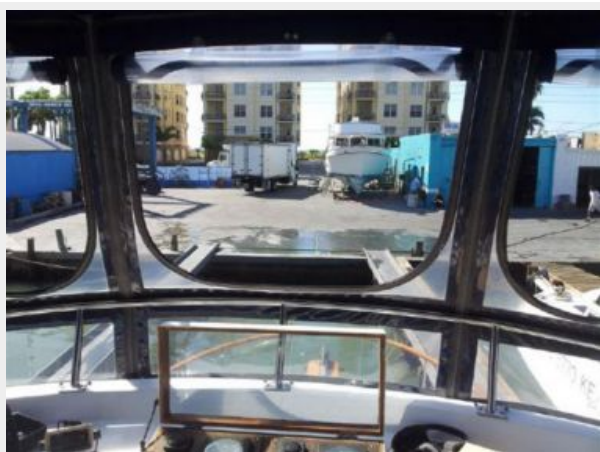
При продаже яхты исключаются личные вещи владельца.

Отказ от ответственности

Компания предоставляет описание судна или яхты добросовестно, но не может гарантировать точность этой информации, а также не ручается за техническое состояние. Покупатель должен проинструктировать своих агентов или оценщиков исследовать представленную информацию более подробно, по собственному желанию. Продажа судна или яхты, изменение цены или снятие с продажи будет происходить без предварительного уведомления.

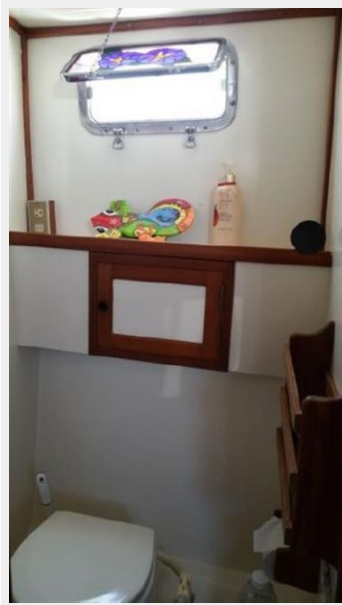
ФОТОГРАФИИ

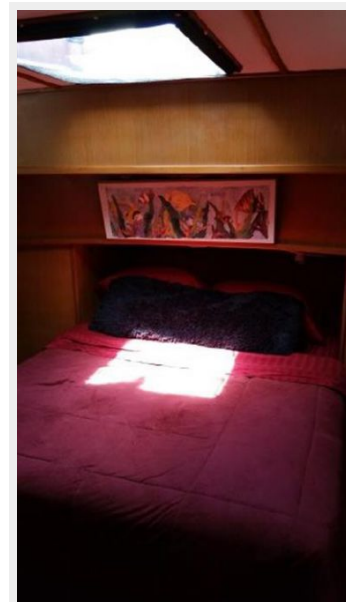
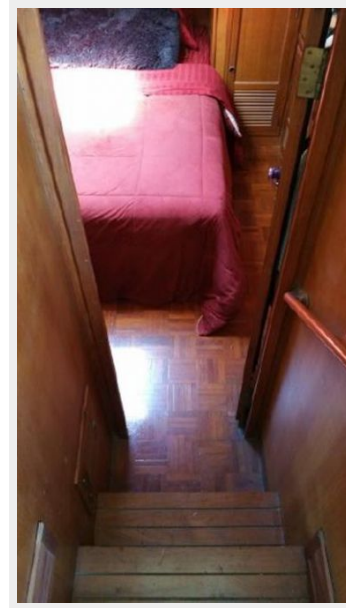














КОНТАКТЫ

Андрей Шестаков (Andrey Shestakov) – ведущий яхтенный брокер отдела продаж яхт и судов компании Shestakov Yacht Sales Inc. Официальный представитель Shestakov Yacht Sales Inc. для русскоговорящих клиентов в центральном офисе компании в Майами/Форт Лодердейл/Флорида/США.

Контактная информация

Email: andrey@shestakovyachtsales.com

Web: shestakovyachtsales.com

Телефоны

Краснодарский край: **+7(918)465-66-44**

США, Майами, Флорида: **+1(954)274-4435**

Время работы

Понедельник – Суббота: **9:00 - 21:00**
EDT

Воскресенье: **Закрито**

Адрес



Harbour Towne Marina, 850 NE 3rd St,
STE 213, Dania, FL 33004