

TRYSTING PLACE TOO — BURGER



Builder: BURGER

Year Built: 1982

Model: Motor Yacht

Price: PRICE ON APPLICATION

Location: United States

LOA: 80' 0" (24.38m)

Beam: 18' 6" (5.64m)

Cruise Speed: 16 Kts. (18 MPH)

Max Speed: 19 Kts. (22 MPH)

Our experienced yacht broker, Andrey Shestakov, will help you choose and buy a yacht that best suits your needs **TRYSTING PLACE TOO — BURGER** from our catalogue. Presently, at Shestakov Yacht Sales Inc., we have a wide variety of yachts available on our sale's list. We also work in close contact with all the big yacht manufacturers from all over the world.

If you would like to buy a yacht **TRYSTING PLACE TOO — BURGER** or would like help answering any questions concerning purchasing, selling or chartering a yacht, please call **+1(954)274-4435**

TABLE OF CONTENTS

TABLE OF CONTENTS	2
SPECIFICATIONS	7
Overview	7
Basic Information	7
Dimensions	7
Speed, Capacities and Weight	7
Accommodations	8
Hull and Deck Information	8
Engine Information	8
DETAILED INFORMATION	9
OVERVIEW	9
MAIN DECK WALK-THRU	9
Main Salon	9
COUNTRY KITCHEN GALLEY	10
PILOTHOUSE ELECTRONICS	10
Accommodations	11
FLYBRIDGE & BOAT DECK	12
Electrical System	13
ENGINE ROOM & MECHANICAL DETAILS	14
AFT DECK & COCKPIT	15
Exclusions	15
Remarks	15
Exclusions	15
Disclaimer	15
PHOTOS	17
Salon looking Forward	17
Salon looking Forward	17
Salon Wet Bar & Entertainment Cabinet	17

Salon Wet Bar, Refrigerator, & Ice Maker	17
Salon Entertainment Cabinet	17
Salon Port Side	17
Salon Port Side	18
Salon looking Aft	18
Salon & Accommodations Stairway Starboard Side	18
Salon Curio Shelf	18
Salon Starboard Aft	18
Galley	18
"Country Kitchen"	19
"Country Kitchen" Dining	19
"Country Kitchen" Storage Hutch	19
Galley	19
"Country Kitchen" Storage Hutch	19
Pilothouse looking Starboard	19
Pilothouse - Bench Seating	20
Pilothouse looking to Port	20
Pilothouse	20
Pilothouse	20
Pilothouse - Helm	20
Pilothouse - Compass	20
Pilothouse - Gauges	21
Pilothouse - Naiad Stabilizer Controls	21
Pilothouse - Bow Thruster	21
Pilothouse - Trimble NavTrac XL GPS	21
Pilothouse - Meters & Gauges	21
Pilothouse - Furuno NavNet C-Map NT	21
Pilothouse Staircase to Flybridge	22
Access to Country Kitchen	22

Stairway from Salon to Accommodations	22
Accommodations Companionway	22
Master Stateroom	23
Master Stateroom	23
Master Stateroom	23
Master Stateroom	23
Master Bathroom	23
Port Guest Stateroom	23
Port Guest Ensuite Head	24
Starboard Guest Stateroom	24
Forward Chain Locker	24
Stairway to Crew's Quarters	24
Crew Cabin looking Forward	25
Single Crew Berth	25
Crew Bathroom	25
Over/Under Crew Bunks	25
Stacked Washer & Dryer	26
Access to Crew Mess Area	26
Linen, Laundry & Hanging Storage Locker	26
Additional Hanging Locker/Laundry Storage	26
View of Engine Room	27
Engine Room	27
Engine Room	27
Engine	27
Engine Room	27
Generator in Engine Room	27
Generator in Engine Room	28
AC units in Engine Room	28
Engine Room - Manual Gauges	28

Engine Room	28
Engine Room - Electrical Panel	28
Engine Room	28
Engine Room - Electrical Panel	29
Flybridge Helm Station	29
Flybridge Helm	29
Flybridge - Electronics	29
Flybridge - Bow Thruster Control	29
Flybridge - Helm Seats	29
Flybridge Seating	30
Flybridge Seating	30
Flybridge Seating	30
Flybridge Seating Around Mast	30
Flybridge Seating	30
Flybridge Seating Pass-Thru	30
Flybridge - Forward Enclosure	31
Flybridge Access & Enclosure	31
Flybridge Access & Enclosure	31
MarQuipt Davit	31
Mast	31
13' Novurania w/50 Hp Yamaha	31
Novurania Tender	32
Aft Deck	32
Aft access to Flybridge	32
Aft Deck Lounger - Starboard	32
Aft Deck Chairs to Port	32
Aft Deck	32
Cockpit	33
Cockpit Controls	33

Transom Door	33
Transom & Swim Platform	33
Lazarette	33
Lazarette	33
Starboard Side Deck	34
Foredeck	34
Foredeck	34
Ideal Windlass	34
Name Board	34
Step Plate	34
Starboard Profile	35
Stern View	35
CONTACTS	36
Contact details	36
Telephones	36
Office hours	36
Address	36

SPECIFICATIONS

Overview

- Classic Burger cockpit motor yacht. Truly a "yachtsman's yacht".
- Reliable Detroit 12V71TI engines with low hours since rebuilds
- 3 staterooms and 3 heads aft for owners and guests
- Crew's quarters with 3 berths
- Naiad Stabilizers and Wesmar Hydraulic Bow Thruster
- Awlgrip Paint Job 2013
- Spacious Full Beam Salon
- "Country Kitchen" Galley
- 3 Generators
- Easy to inspect
- Undercover in Fort Lauderdale until sold!
- A Must See for all Burger Buyers
- Fresh Bottom Paint and Zincs 2/2016
- Exterior paint and varnish touch up 3/2016
- Owner has moved his personal items off and will seriously consider "ALL CASH OFFERS"!

Basic Information

Category: Motor Yacht

Sub Category: Pilothouse

Model Year: 1982

Year Built: 1982

Country: United States

Dimensions

LOA: 80' 0" (24.38m)

Beam: 18' 6" (5.64m)

Speed, Capacities and Weight

Cruise Speed: 16 Kts. (18 MPH)

Max Speed: 19 Kts. (22 MPH)

Water Capacity: 1250 Gallons

Fuel Capacity: 3740 Gallons

Accommodations

Total Cabins: 4

Total Heads: 4

Hull and Deck Information

Hull Material: Aluminum

Engine Information

Engines: 2

Manufacturer: GM

Model: 12V71TI

Engine Type: Inboard

Fuel Type: Diesel

DETAILED INFORMATION

OVERVIEW

TRYSTING PLACE TOO features three en suite staterooms aft for owners and guests. Crew Quarters for three are forward and access to the full-width stand-up Engine Room is just aft. The Raised Pilothouse is amidships, a few steps above the main deck level, with access to the Flybridge to port. The Main Deck includes the Main Salon and Aft Deck, as well as the "country kitchen"-styled Galley which is located forward and down a few steps from the pilothouse. The Cockpit was added in the mid-1980s at the Spencer Boat Company (now Rybovich Marine) in West Palm Beach, FL, under the close supervision of the Burger Boat Company.

TRYSTING PLACE TOO is an excellent example of a classic Burger yacht, perfect for island and coastal cruising. Offered for sale by a knowledgeable yachtsman who has been boating since the tender age of 15 and has owned numerous vessels, including several Burger motor yachts.

MAIN DECK WALK-THRU

Access to **TRYSTING PLACE TOO** is through boarding gates amidships, port and starboard from the open side decks. There is a wing door aft along the starboard side deck for entry into the Main Salon. The Pilothouse can be entered from either side amidships through sliding doors. Moving forward along the side decks, the spacious foredeck has raised bulwarks with a continuous stainless steel and teak hand rail around the bow. A watertight deck hatch, centered on the foredeck, leads down to the Crew Quarters, with the anchor windlass just forward. There is a built-in bench seat forward of the deckhouse with storage underneath.

The Raised Pilothouse has a bench seat for both captain and guest seating, and the helm station is centered. There are chart drawers below the bench seat. Access to the Flybridge is aft to port.

The "country kitchen" styled Galley is forward and down a few steps to starboard from the pilothouse, and the crew quarters are forward and down from the galley level.

Aft of the pilothouse is the full-width Main Salon with a built-in wet bar along the forward bulkhead. Salon seating is aft to port and starboard. A stairway starboard, just forward of the sofa, leads down to the lower deck owner and guest accommodations.

Main Salon

MAIN SALON:

- Wet bar with granite counter top, sink, refrigerator, icemaker, and storage cabinets
- Entertainment center with TV above

- Mirrored forward bulkhead
- Drapes and wood blinds on windows
- Sliding glass door to aft deck
- White carpet
- Wood paneling (refinished 4/2015)

Port Side:

- Sofa
- 2 Blue upholstered occasional chairs
- Cocktail table
- 2 End tables with lamps
- Blue upholstered easy chair with ottoman

Starboard Side:

- White upholstered sofa
- Side table with lamp
- Stairway to accommodations below
- Granite-topped staircase surround, for storage and knick-knacks display
- Lamp

COUNTRY KITCHEN GALLEY

- Granite-topped breakfast bar/prep counter
- 5 Chairs/stools
- Hotpoint refrigerator/freezer
- GE dishwasher
- GE microwave
- GE convection oven
- KitchenAid coffee maker
- Toaster oven
- Stainless steel sink with garbage disposal
- Varnished cherry cabinet faces
- Ample cabinets and drawers
- Custom built-in "hutch" wood storage and shelves cabinetry on forward bulkhead
- Window blinds
- Extra table lamps

PILOTHOUSE ELECTRONICS

- Simrad autopilot AP50
- Simrad rudder angle indicator R135

- Wesmar bow thruster
- Kobelt jog steering
- Naiad stabilizers
- Sea 223 SSB radio
- Datamarine Navigator knotlog
- Datamarine depth indicator and alarm
- Bogen intercom
- Magnavox 4102
- ICOM ICM412 VHF radio
- Trimble NavTrac XL GPS
- FiQuench MK III fire control system
- Magnetic compass
- Chelsea clock and barometer

Accommodations

MASTER STATEROOM:

The full-width Master Stateroom is aft with a walk-around queen bed, built-in night tables port and starboard and built-in bureaus on each side of the stateroom.

- Mirrored wall behind bed
- Built-in vanity/desk **to port**
- Mounted reading lamps
- Opening port lights, port and starboard
- Large linen drawers built-in beneath the bed
- Cedar-lined "his and hers" closets
- Flat screen TV
- Concealed escape hatch in the aft bulkhead opens to the lazarette
- En suite bathroom, forward to port, with lighted vanity with large mirror, towel bars, granite counter with under-mounted sink, tiled sole, toilet, and glass enclosed shower.
- Access to storage space under staircase
- Safe

PORT & STARBOARD GUEST STATEROOMS:

Forward of the master stateroom are two nearly-identical Guest Staterooms. Each stateroom features:

- Twin lower berths
- Mirrored wall behind bed
- Opening port lights
- Nightstand with drawers between the beds
- Mounted reading lamps

- Cedar hanging locker
- Large drawers beneath each bed
- En suite bathroom with full amenities including toilet and stall shower

CREW QUARTERS:

Crew accommodations are all the way forward, accessed from the galley/dining salon. An overhead deck hatch provides access to the foredeck. A stacked washer/dryer is housed in these quarters. Crew Bathroom is aft to starboard with toilet and stall shower. Opposite to port is the large lined laundry hanging storage room. Access to the engine room is aft from the crew quarters through a watertight door.

- **V-berth configuration with over/under bunks starboard and single lower berth to port**
- **Crew bunks for 3**
- **Flat screen TV**
- **Lighting**
- **Wood flooring**

FLYBRIDGE & BOAT DECK

Accessed by stairs from the Pilothouse, the Flybridge offers upper helm steering with helm and companion chairs and full instrumentation forward. Built-in bench seating with storage beneath and a pedestal-mounted triangular-shaped table are just aft. The radar mast and a storage cabinet divide the bench seating. Further aft is the Boat Deck with its dual davits for the yacht's tenders stored here.

FLYBRIDGE ELECTRONICS:

- Controls for engines, stabilizers, bow thruster, air horns, engine synchronizer
- Simrad Rudder indicator
- Danforth Compass
- Furuno NavNet monitor with C-Map NT
- Northstar 6000i GPS
- Datamarine depth and speed indicator
- Simrad handheld autopilot controller
- ICOM IC M127 VHF radio
- Kobelt Jog steering control

DECK EQUIPMENT:

- Bimini Top by PipeWelders with 3 sided isinglass enclosure (new 2014)
- Dual Kahlenberg air horns
- Dual electric horns
- Carlisle and Finch searchlight
- Aft facing searchlight on mast

- Bogen intercom system
- Hinged Mast
- 2 pedestal-mounted Pompanette helm chairs with covers
- Blue canvas cushions
- 2 MarQuipt electric low profile tender davits
- 3 Quartz halogen docking and security lights
- Givens life raft in canister
- 13' Novurania Hard Bottom Inflatable Tender with 50 hp Yamaha (rebuilt 2015)
- Ideal anchor windlass
- Single thru-deck anchor hawse
- Danforth 90 lb. self-stowing anchor with **300'** of chain
- Hullside anchor pocket
- 2 Spare Danforth anchors
- **Anchor davit & tackle ?**
- Teak decks aft; painted non-skid aluminum decks forward
- Side boarding aluminum ladder
- MarQuipt Tide Ride sea stairs
- **MarQuipt passarelle ?**
- Extended length swim platform with transom door access to cockpit
- White Awlgrip paint job, 2013
- 3 Fresh water wash downs
- 2 life rings
- 12 Life jackets
- Fenders and lines
- Pilothouse window sun covers

Electrical System

- 110V, 220V AC electrical system
- 12V & 32V DC electrical system
- 2 X 32V battery banks in lazarette (new 4/2015)
- 2 X 12V battery banks in engine room (new 4/2015)
- LaMarch 12V & 32V Constavolt battery chargers
- 2 Stabiline Voltage regulators
- 2 X 25kW Westerbeke generators, rebuilt 2009; emergency shutdowns in pilothouse
- 15kW Westerbeke generator in lazarette
- 2 X **50'** Hubbell 50 amp shore power cords with port, starboard, and aft connections
- **50'** Hubbell phone cord
- Numerous Hubbell electrical adaptors
- Microtec 32V to 12V converter
- Engelhard electrolysis (Capac) monitoring system

ENGINE ROOM & MECHANICAL DETAILS

- Full-width Engine Room with full standing headroom
- Twin 800 HP diesels, GM 12V71TI main engines, approximately **1000** hours since overhaul (2009) by Western Branch Diesel
- Both 25kW Westerbeke generators rebuilt 2009 (at the same time)
- Typical Burger engine room layout with logical arrangement and easy access to all equipment
- 30 GPH fuel consumption @1500 rpms with 1 generator
- 65 GPH fuel consumption @2200 rpms with 1 generator
- Main engines fitted with double Racor filters with vacuum gauges
- Airseps
- Fresh water cooling
- Hynautic controls, pilothouse and flybridge
- Emergency engine stops
- Engine alarms
- Bilge, sump, and holding tank alarms
- Hydraulic steering
- Twin Disc transmissions
- FiQuench Mark III automatic fire control system
- 2 high capacity blowers in engine room
- 2 Automatic Rule 32V bilge pumps, 1500 GPH and 2000 GPH
- Oberdorfer 9000 emergency bilge pump
- 4 Sealand vacuum flush marine toilets
- Holding tank
- Thermal and acoustic insulation
- 20-gallon lube oil reserve oil tank with deck fill
- Fuel transfer system
- 2 spare propellers, 32 X 30, 4-blade
- spare stainless steel propeller shaft
- Spare stub shaft
- Naiad Stabilizers
- Wesmar hydraulic Bow Thruster
- Engine room instrumentation
- Village 600 GPD watermaker
- Cruisair reverse cycle air conditioning, 8 units with condensation trays
- Kahlenberg air compressor and dual horns
- Central vacuum system
- Shaft spurs
- 3740 gallons fuel capacity in 3 tanks: 1,495 main; 645 reserve, and 1,600 cockpit
- 1,250 gallons water capacity in 2 tanks
- Rudders upgraded 1988 to Hargrave-designed foil rudders, built by Derecktors

AFT DECK & COCKPIT

- Teak deck
- Varnished caprail
- Sliding glass doors entry to main salon
- Deck chairs, lounge and table
- Steps on centerline down to cockpit
- Stainless steel ladder up to Flybridge/Boatdeck
- Jenn-air grill
- Cockpit controls
- Transom door to swim platform

Exclusions

Including but not limited to accessories, personal items, & artwork. A complete list will be made available upon contract.

Remarks

TRYSTING PLACE TOO is a very unique yacht in that she has three private staterooms each with en-suite head and shower. With her "country kitchen" style galley forward, spacious main salon, and open California deck aft, she offers a nice variety of living areas while cruising in comfort. Separate crew quarters, a spacious flybridge, and the added cockpit make **TRYSTING PLACE TOO** the complete Burger yacht!

Exterior paint was recently renewed and her varnish is in excellent condition. Her interior woodwork and furnishings reflect the fit and finish one would expect aboard a Burger.

TRYSTING PLACE TOO is realistically priced, offered for sale by a proud Burger owner, and ready to cruise.

Exclusions

Owner's personal belongings.

Disclaimer

The Company offers the details of this vessel or yacht in good faith but cannot guarantee or warrant the accuracy of this information nor warrant the condition of the vessel. A buyer should instruct his representatives, agents, or his surveyors, to investigate such details as the buyer desires validated. This vessel or yacht is offered subject to prior sale, price change, or withdrawal

without notice.

PHOTOS

Salon looking Forward



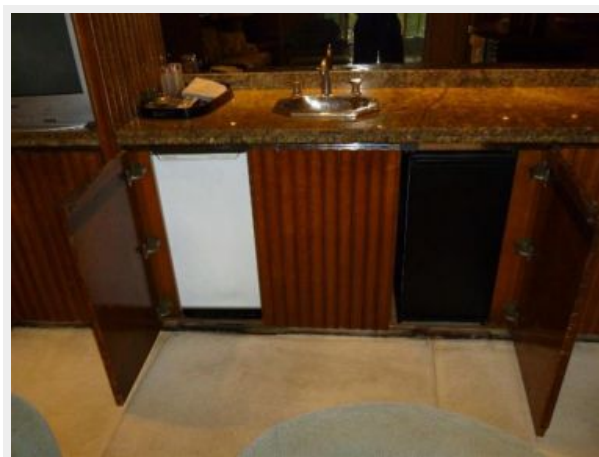
Salon looking Forward



Salon Wet Bar & Entertainment Cabinet



Salon Wet Bar, Refrigerator, & Ice Maker



Salon Entertainment Cabinet



Salon Port Side



Salon Port Side



Salon looking Aft



**Salon & Accommodations Stairway
Starboard Side**



Salon Curio Shelf



Salon Starboard Aft



Galley



"Country Kitchen"



"Country Kitchen" Dining



"Country Kitchen" Storage Hutch



Galley



"Country Kitchen" Storage Hutch



Pilothouse looking Starboard



Pilothouse - Bench Seating



Pilothouse looking to Port



Pilothouse



Pilothouse



Pilothouse - Helm



Piothouse - Compass



Pilothouse - Gauges



Pilothouse - Naiad Stabilizer Controls



Pilothouse - Bow Thruster



Pilothouse - Trimble NavTrac XL GPS



Pilothouse - Meters & Gauges



Pilothouse - Furuno NavNet C-Map NT



Access to Country Kitchen



Pilothouse Staircase to Flybridge



Stairway from Salon to Accommodations



Accommodations Companionway



Master Stateroom



Master Stateroom



Master Stateroom



Master Stateroom



Master Bathroom



Port Guest Stateroom



Port Guest Ensuite Head



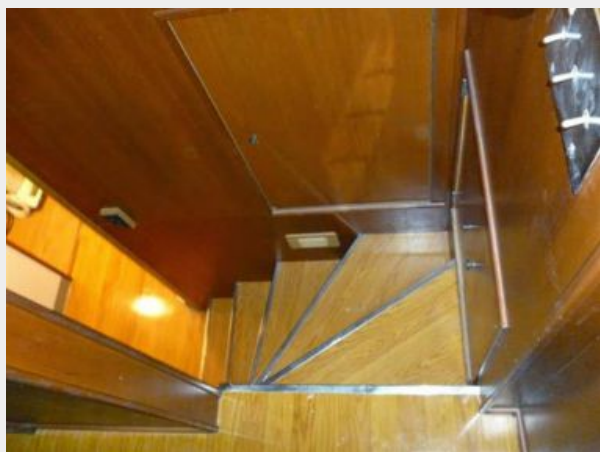
Starboard Guest Stateroom



Forward Chain Locker



Stairway to Crew's Quarters



Crew Cabin looking Forward



Single Crew Berth



Over/Under Crew Bunks



Crew Bathroom



Access to Crew Mess Area**Stacked Washer & Dryer****Linen, Laundry & Hanging Storage Locker Additional Hanging Locker/Laundry Storage**

View of Engine Room



Engine Room



Engine Room



Engine



Engine Room



Generator in Engine Room



Generator in Engine Room



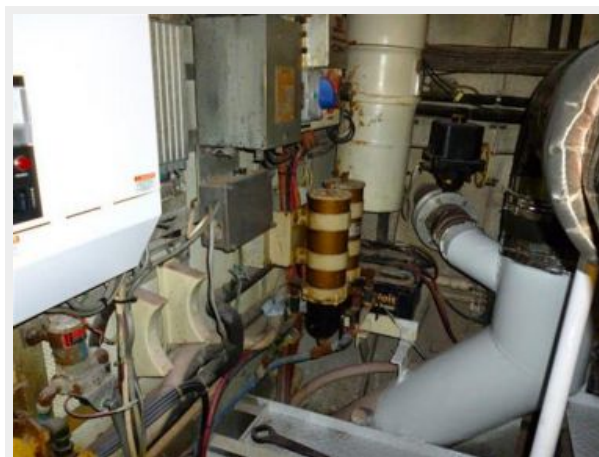
AC units in Engine Room



Engine Room - Manual Gauges



Engine Room



Engine Room - Electrical Panel



Engine Room



Engine Room - Electrical Panel



Flybridge Helm Station



Flybridge Helm



Flybridge - Electronics



Flybridge - Bow Thruster Control



Flybridge - Helm Seats



Flybridge Seating



Flybridge Seating



Flybridge Seating



Flybridge Seating Around Mast



Flybridge Seating



Flybridge Seating Pass-Thru



Flybridge - Forward Enclosure



Flybridge Access & Enclosure



Flybridge Access & Enclosure



MarQuipt Davit



Mast



13' Novurania w/50 Hp Yamaha



Novurania Tender



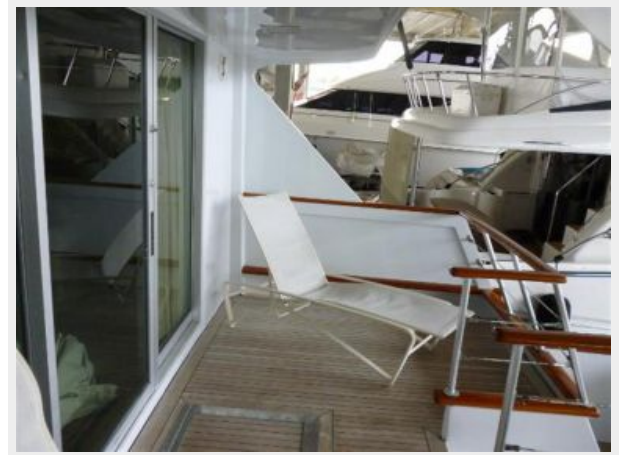
Aft Deck



Aft access to Flybridge



Aft Deck Lounger - Starboard



Aft Deck Chairs to Port



Aft Deck



Cockpit



Cockpit Controls



Transom Door



Transom & Swim Platform



Lazarette



Lazarette



Starboard Side Deck



Foredeck



Foredeck



Ideal Windlass



Name Board



Step Plate



Starboard Profile



Stern View



CONTACTS

Andrey Shestakov, leading yacht broker of the sales department of Shestakov Yacht Sales Inc. Shestakov Yacht Sales Inc., the official representative of the Miami/Fort Lauderdale FL headquarters.

Contact details

Email: **andrey@shestakovyachtsales.com**

Web: shestakovyachtsales.com/en/

Telephones

USA: **+1(954)274-4435**

Office hours

Monday – Saturday: **9:00 - 21:00 EDT**

Sunday: **closed**

Address



Harbour Towne Marina, 850 NE 3rd St,
STE 213, Dania, FL 33004