

74FT 1996 HATTERAS 74 SPORT DECK MOTOR YACHT — HATTERAS



Судостроитель: HATTERAS

Год постройки: 1996

Модель: Моторная яхта

Цена: ЦЕНА ЯХТЫ ПО ЗАПРОСУ

Местонахождение: United States

Длина общая: 74' 0" (22.56m)

Ширина: 18' 2" (5.54m)

Мин. осадка: 5' 6" (1.68m)

Крейс. скорость: 21 Kts. (24 MPH)

Макс. скорость: 24 Kts. (28 MPH)

Купить 74ft 1996 Hatteras 74 Sport Deck Motor Yacht — HATTERAS а также выбрать подходящую вам яхту из нашего каталога яхт вам поможет опытный яхтенный брокер Андрей Шестаков. На сегодняшний день компания Shestakov Yacht Sales Inc. имеет большое количество яхт в собственном списке продаж, а также тесно сотрудничает со всеми крупными яхтенными производителями по всему миру.

Для того чтобы купить яхту 74ft 1996 Hatteras 74 Sport Deck Motor Yacht — HATTERAS а также проконсультироваться по любому вопросу связанному с покупкой, продажей, чартером яхт позвоните по телефону **+7(918)465-66-44**.

ОГЛАВЛЕНИЕ

ОГЛАВЛЕНИЕ	2
ХАРАКТЕРИСТИКИ	6
Основная информация	6
Размеры	6
Скорость, вместимость и масса	6
Размещение	6
Корпус и палуба	6
Информация о двигателе	7
ПОДРОБНОЕ ОПИСАНИЕ	8
Vessel Updates	8
Исключения	13
Отказ от ответственности	13
ФОТОГРАФИИ	14
Starboard side	14
Bow	14
Stern	14
Starboard Bow	14
Boarding from Port and Starb Sides	14
Pilot House	14
Helm Seating	15
Lower Helm	15
New Bow Thruster	15
New Garmin GPS/Plotter lower station	15
Furuno Radar	15
Auto Pilot	15
PH Bridge Stairs	16
PH Depth Finder	16
Galley Dinette	16

Galley Dinette	16
Galley	16
Galley	16
Galley	17
Dishwasher and Trash compactor	17
Dining Table	17
Salon Port side	17
Salon Looking forward	17
Salon Looking Aft	17
Master Stairwell	18
Master Stairwell	18
Master Cabin	18
Master Cabin	18
Master Cabin	18
Master Cabin	18
Master Cabin Head Starboard	19
Master Cabin Tub/Shower	19
Master Cabin Head Port	19
Master Cabin Tub/Shower	19
Master Cabin Walk-in Closet	20
Guest Cabin 3	20
Guest Cabin 3	20
Guest Cabin 3	20
Guest Cabin Head/Shower	21
Guest Cabin 4	21
Guest Cabin 4 Head/Shower	21
VIP Cabin	21
VIP Head	22
VIP Head/Shower	22

Bridge Helm	22
Bridge Helm	22
Bridge Furuno Navnet	22
B&G Speed/Depth log	22
Bridge Bar	23
Bridge Bar	23
Bridge Wet Bar w/refrigerator	23
Bridge Aft Seating	23
Bridge Aft Seating	23
13' Novarania Tender	23
New VHF radio on Tender	23
Yamaha F50hp	23
Starboard side bow access	24
Bow Sunpads and seat	24
Port side boarding ladder	24
Bow Pulpit and windlass	24
Stern with easy boarding steps	25
Aft Deck	25
Clean Engine room	25
Port Engine	25
Starboard Engine	25
Watermaker	25
Generator 1	26
Generator 2	26
7 AC Units	26
New Viking (6) Person Emergency Lift Raft	26
КОНТАКТЫ	27
Контактная информация	27
Телефоны	27

Время работы	27
Адрес	27

ХАРАКТЕРИСТИКИ

Основная информация

Тип судна: Моторная яхта

Подкатегория: Flybridge

Модельный год: 1996

Год постройки: 1996

Страна: United States

Размеры

Длина общая: 74' 0" (22.56m)

Ширина: 18' 2" (5.54m)

Мин. осадка: 5' 6" (1.68m)

Скорость, вместимость и масса

Крейс. скорость: 21 Kts. (24 MPH)

Крейсерская скорость поворота: 2075 Kts.

Макс. скорость: 24 Kts. (28 MPH)

Макс. скорость поворота: 2400 Kts.

Водоизмещение: 106000 Pounds

Вместимость воды: 345 Gallons

Вместимость сточного бака: 180 Gallons Объем топливного бака: 1596 Gallons

Размещение

Всего кают: 4

Всего коек: 6

Всего ком. состава: 4

Корпус и палуба

Материал корпуса: Fiberglass

Информация о двигателе

Двигатели: 2

Производитель: MTU

Модель: M12V183 TE93

Тип двигателя: Inboard

Тип топлива: Diesel

ПОДРОБНОЕ ОПИСАНИЕ

Vessel Updates

Vessel Walkthrough

Boarding the vessel is easy from either the port or starboard side, mid-ship at pilothouse sliding doors. The 3 guest cabins are forward which include 2 VIP Staterooms with queen size beds, cedar lined closets, and en-suite heads. The 3rd guest stateroom has bunk beds and a en-suite bathroom. All staterooms have a light, maple wood through out and the galley, salon, & pilot house feature a mahogany satin wood finish.

The galley and salon are just aft of the pilot house. There is a u-shaped dinette with seating for 5 across from galley just aft of pilot house. The galley has granite counter tops and is open to roomy salon with large windows on both port and starboard side. The large windows and open galley create a open, free flowing feel to salon.

The private master stateroom and engine room is accessed in the salon through stair case on starboard side. The master all the way aft is full beam, King size bed with walk-in cedar closets, vanity, entertainment center, and his & her bathroom. The engine room is just forward of master stateroom.

The fly bridge is accessed from pilot house stair case. The fly bridge features a Brand New Stamoid Bimini Top that shades all of the seating. The huge island bar in middle has a sink, refrigerator and 3 comfortable bar stools. The radar arch can electronically be lowered to lower the clearance on bridges. There are 2 helm seats at the helm with ample electronics.

There has been constant improvements on her over the years. Her current pilot owners have recently completed the following:

Sept. 2014 Brand New 485 lbf, 24V, 12" Vetus Bow Thruster installed – w/ dual station controls.

Sept. 2014 Brand New Bridge Stamoid Double Bimini Top with heavy duty SS Frame

New 24Vdc digital battery minder installed.

Engine oil and filters serviced.

Engine fuel filters serviced.

Engine Racor filters serviced.

Engine air filters replaced.

Engine fuel lines replaced.

Starboard engine heat exchanger rebuilt – all new seals.

Starboard turbo seals replaced.

Exhaust support brace replaced.

Transmission oil changed.

Transmission pressure sensors replaced.

Port drive shaft seals replaced.

Generator oil and filters serviced.

Generator fuel filters serviced.

Generator Racor filters serviced.

Generator air filters cleaned.

Generator heat exchanges cleaned.

Generator raw water pump impellers replaced.

Generator coolant return hoses replaced.

New machinery room LED lighting installed.

Cruise Air compressor replaced.

AC raw water pumps replaced.

Stabilizer oil serviced.

Stabilizer outer seals replaced.

Stabilizer hydraulic seals replaced.

Stabilizer heat exchanger cleaned and serviced.

Stabilizer cooling pump replaced.

Stabilizer fins reconditioned.

Resealed forward deck hatch frames.

Replaced wiper arms and blades.

New Garmin GPS chart plotter installed.

New Tender VHF radio installed.

New galley lighting installed.

All new galley and dining ware.

All new salon furnishings installed.

New dual satellite dish receivers installed.

New 1" & 3/4" dock lines.

New freshwater wash down hoses.

New quick disconnect deck wash down bib adaptors.

(4) New Samsung LED TV's installed.

New 25' 50amp shore cord.

New shore cord plug ends installed.

New life rings installed two stations with floating lines.

Coast Guard safety inspections completed Feb. 2015.

All new zincs in Jan. 2015

2012 Services performed on engines (valve adjustment, injectors serviced, raw water pumps, & heat ex-changers serviced) New Stabilizers seals, New pistons & cable in davit for tender.

2010 -2011 New Radar & Furuno Nav Net GPS

2004 Vessel was completely repainted

Pilothouse

- New GarminGPS
- SEAHAIL
- SEA156 VHF
- Auto Pilot AP 300X
- URC-100 Spot Light
- 2 B&D Tri Data
- Naiad Stabilizer controls

Salon

- Large L-shaped sofa
- Over sized occasional chair
- Round dining table w/ 4 chairs
- Custom lighting throughout
- Granite top on buffet

- Custom bottle storage
- Entertainment center - Hi-Fi stereo/New Samsung LED TV-
- HDL-6 high definition selection system - Sony custom high density CD player - Denon AVR-2500 surround sound stereo receiver
- Full width aft salon sliding door to aft deck

Galley

- Custom Granite counters
- Ample storage
- Whirlpool convection oven/microwave
- Kitchen Aid refrigerator w/ ice & water
- Whirlpool dish washer
- Whirlpool oven
- Kitchen Aid ice maker
- Double sink w/ garbage disposal
- Custom light fixtures
- Galley opens to dinette with seating for 5

Master Stateroom

- King size berth
- Overhead Lighting throughout
- Mirror bulkhead
- Custom hardware
- 2 large dressers, each w/ 6 drawers
- Duetts & Rouan shades
- Entertainment Center New Samsung LED TV
- Ventilating port lights w/ screens
- Walk in cedar lined wardrobe
- Vanity
- His & Her Bathroom

VIP Stateroom Forward

- Queen size berth
- 2 large cedar-lined lockers
- Night stand w/ lamp
- Telephone/intercom system
- Duetts & Rouan shades
- Custom lighting
- New Samsung LED TV
- Custom padded bulkhead
- Custom bulkhead mirror
- En-suite bathroom doubles as day bathroom

Guest Stateroom Port

- Upper & lower berths
- Cedar-lined locker & dresser drawer
- Mirrored forward bulkhead
- Custom lighting
- Stereo speakers
- New Samsung LED TV
- En suite head w/ large stall shower

VIP Stateroom 2

- Queen size berth
- Cedar lined closet
- Night stand w/ lamp
- Doetts & Rouan shades
- Custom lighting
- New Samsung LED TV
- Custom padded bulkhead
- Custom bulkhead mirror
- En-suite bathroom

Fly Bridge

- Ample U Shape seating
- Bar with 3 bar stools
- Sink & U-Line refrigerator
- 2 helm chairs
- Electronics

- Furuno Nav Net

-Robertson Autopilot AP 300x

- iCom VHF

- B&G Hercules 790 TriData

- Northstar 962

Engine & Mechanical

- Twin MTU 12V183 TE93, 1150 hp ea., 1950 hrs. W-4's just completed
- Generator #1 hours:-2,600
- Generator #2 hours-506

- Village Marine Tec 600 gpd water maker
- Naiad Stabilizers

Tender

2006 Novurania dinghy with Yamaha 50hp Four-stroke

Исключения

При продаже яхты исключаются личные вещи владельца.

Отказ от ответственности

Компания предоставляет описание судна или яхты добросовестно, но не может гарантировать точность этой информации, а также не ручается за техническое состояние. Покупатель должен проинструктировать своих агентов или оценщиков исследовать представленную информацию более подробно, по собственному желанию. Продажа судна или яхты, изменение цены или снятие с продажи будет происходить без предварительного уведомления.

ФОТОГРАФИИ

Bow



Starboard side



Stern



Starboard Bow



Boarding from Port and Starb Sides



Pilot House



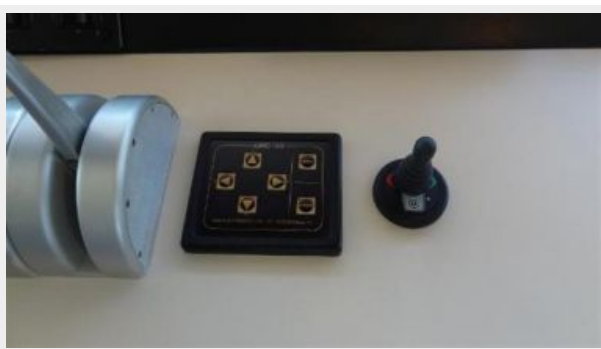
Helm Seating



Lower Helm



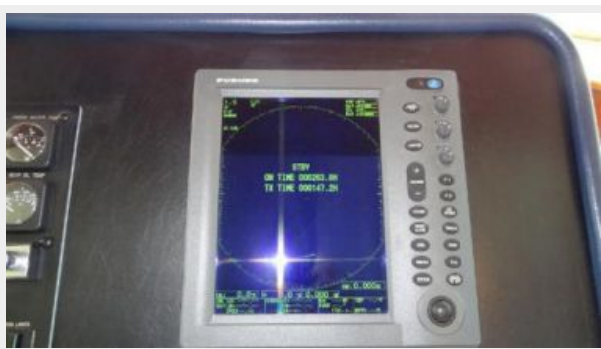
New Bow Thruster



New Garmin GPS/Plotter lower station



Furuno Radar



Auto Pilot



PH Depth Finder



PH Bridge Stairs



Galley Dinette



Galley Dinette



Galley



Galley



Galley



Dishwasher and Trash compactor



Dining Table



Salon Port side



Salon Looking forward



Salon Looking Aft



Master Stairwell



Master Stairwell



Master Cabin



Master Cabin



Master Cabin



Master Cabin



Master Cabin Head Starboard



Master Cabin Tub/Shower



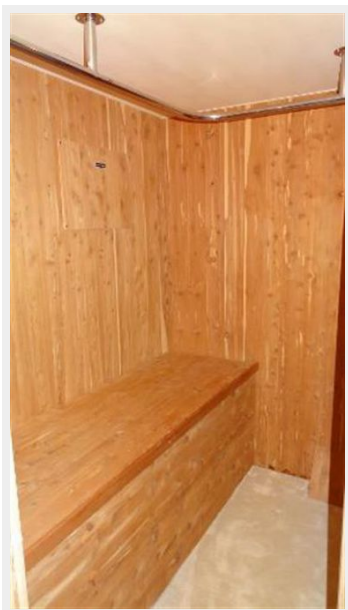
Master Cabin Head Port



Master Cabin Tub/Shower



Master Cabin Walk-in Closet



Guest Cabin 3



Guest Cabin 3



Guest Cabin 3



Guest Cabin Head/Shower



Guest Cabin 4



Guest Cabin 4 Head/Shower



VIP Cabin



VIP Head



VIP Head/Shower



Bridge Helm



Bridge Helm



Bridge Furuno Navnet



B&G Speed/Depth log



Bridge Bar



Bridge Bar



Bridge Wet Bar w/refrigerator



Bridge Aft Seating



Bridge Aft Seating



13' Novarania Tender



New VHF radio on Tender



Yamaha F50hp



Starboard side bow access



Bow Sunpads and seat



Port side boarding ladder



Bow Pulpit and windlass



Stern with easy boarding steps

Aft Deck



Clean Engine room



Port Engine



Starboard Engine



Watermaker



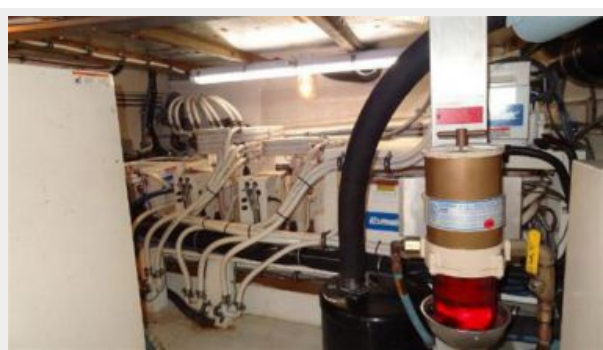
Generator 1



Generator 2



7 AC Units



New Viking (6) Person Emergency Lift Raft



КОНТАКТЫ

Андрей Шестаков (Andrey Shestakov) – ведущий яхтенный брокер отдела продаж яхт и судов компании Shestakov Yacht Sales Inc. Официальный представитель Shestakov Yacht Sales Inc. для русскоговорящих клиентов в центральном офисе компании в Майами/Форт Лодердейл/Флорида/США.

Контактная информация

Email: andrey@shestakovyachtsales.com

Web: shestakovyachtsales.com

Телефоны

Краснодарский край: **+7(918)465-66-44**

США, Майами, Флорида: **+1(954)274-4435**

Время работы

Понедельник – Суббота: **9:00 - 21:00**
EDT

Воскресенье: **Закрито**

Адрес



Harbour Towne Marina, 850 NE 3rd St,
STE 213, Dania, FL 33004