

WHAT'S NEXT — VIKING



Судостроитель: VIKING

Год постройки: 1987

Модель: Крейсер

Цена: **ЦЕНА ЯХТЫ ПО ЗАПРОСУ**

Местонахождение: United States

Длина общая: 50' 0" (15.24m)

Ширина: 15' 0" (4.57m)

Макс. осадка: 4' 0" (1.22m)

Купить **What's Next — VIKING** а также выбрать подходящую вам яхту из нашего каталога яхт вам поможет опытный яхтенный брокер Андрей Шестаков. На сегодняшний день компания **Shestakov Yacht Sales Inc.** имеет большое количество яхт в собственном списке продаж, а также тесно сотрудничает со всеми крупными яхтенными производителями по всему миру.

Для того чтобы купить яхту **What's Next — VIKING** а также проконсультироваться по любому вопросу связанному с покупкой, продажей, чартером яхт позвоните по телефону **+7(918)465-66-44**.

ОГЛАВЛЕНИЕ

ОГЛАВЛЕНИЕ	2
ХАРАКТЕРИСТИКИ	3
Обзор	3
Основная информация	3
Размеры	3
Скорость, вместимость и масса	3
Размещение	3
Корпус и палуба	4
Информация о двигателе	4
ПОДРОБНОЕ ОПИСАНИЕ	5
Accommodations	5
Aft Deck, Salon and Bridge	6
Electronics	6
Engine and Mechanicals	7
Electrical Equipment	7
Deck, Hull and Construction	8
Additional Remarks	8
Исключения	9
Отказ от ответственности	9
ФОТОГРАФИИ	10
КОНТАКТЫ	17
Контактная информация	17
Телефоны	17
Время работы	17
Адрес	17

ХАРАКТЕРИСТИКИ

Обзор

"What's Next" is an outstanding and highly updated Viking Cockpit Motoryacht. The knowledgeable owners of this boat have gone through this vessel and its systems extensively and you'd be hard pressed to find any better example of a 44 or 50 Viking aft cabin yacht. Noted for their accommodations as well as a true Viking ride these yachts provide the versatility of a motoryacht with the seakeeping and performance of a Viking convertible.

"What's Next" has seen numerous improvements in the past five years which are detailed in the full specs of this listing. She is a must see and is conveniently located in Annapolis. Don't miss this opportunity to own a versatile, high quality, cockpit motoryacht!

Основная информация

Тип судна: Крейсер

Модельный год: 1987

Год постройки: 1987

Страна: United States

Размеры

Длина общая: 50' 0" (15.24m)

Ширина: 15' 0" (4.57m)

Макс. осадка: 4' 0" (1.22m)

Скорость, вместимость и масса

Вместимость воды: 180 Gallons

Вместимость сточного бака: 50 Gallons

Объем топливного бака: 670 Gallons

Размещение

Всего кают: 2

Всего ком. состава: 2

Корпус и палуба

Материал корпуса: Fiberglass

Информация о двигателе

Двигатели: 2

Производитель: Detroit Diesel

Модель: 671TI

Тип двигателя: Inboard

Тип топлива: Diesel

ПОДРОБНОЕ ОПИСАНИЕ

Accommodations

"What's Next" has a wonderful layout that is inviting both inside and out. Starting at the stern, this motoryacht has a large cockpit that makes diving, fishing and watersports a pleasure. A full transom door makes for easy access to the water and a removable dive ladder is stored conveniently nearby when not in use. In deck storage and rod holders round out this space which is also large enough for deck chairs to sit back and relax at the waters edge. On the bow is a davit to easily launch a tender.

Moving up from the cockpit one will find a welcoming aft deck with hard top, wing doors and a new Cool 2 Sea (from the inventor of EZ2CY) enclosure. This aft salon area has a custom L-shaped seat with storage underneath and a bar cabinet forward. New high quality exterior carpeting was completed in the past year and is carried up to the bridge deck as well. The bridge deck features a custom hardtop with full enclosure, freshly covered helm chairs and bench seating along with updated Garmin electronics.

Inside you will instantly notice the updated flooring done by Nu Teak, upgraded soft goods, upholstery, lighting, and hardware. The original teak cabinetry and woodwork is in excellent condition and the windows have all been removed, powder coated and rebedded. The salon is light and bright and has an updated entertainment center with Samsung LCD TV and Bose sound system. The galley has been redone with a custom stainless steel countertop and updated appliances including a convection microwave and oven. A dinette provides a great space for dining or a game of cards with the family and converts to a third sleeping area at night if needed. The guest stateroom and head are forward as well as a nice pantry closet. The guest head has a stall shower and a new freshwater toilet with all new hoses and plumbing. The guest stateroom features abundant storage as well as a built in seat to starboard. Large sized bunks are to port and nice natural light is provided from both side ports and an overhead hatchway.

The master stateroom enjoys the privacy of being aft of the salon and features a true queen size berth with upgraded mattress. Hanging lockers and built in drawers both port and starboard provide more than enough storage and the master head features its own stall shower and new freshwater toilet.

- Satellite TV
- LCD flat screen TV's in staterooms and salon
- Bose 123 Sound System in salon
- Salon wet bar
- Nu Teak flooring
- Fresh wall paper
- Updated salon couch cushions
- New pillows and softgoods throughout
- New interior lights in heads, salon and staterooms

- New blinds and window coverings in salon
- Custom Stainless Steel galley counter
- New Microwave/Convection Oven
- New kitchen faucet
- Updated CruiseAir SMXir Digital A/C and Heat Controls
- New faucet in head
- All plumbing fixtures replaced in chrome
- All original cabinet pulls and door hardware removed and refinished in nickel
- New freshwater upgraded toilets in guest and master heads
- New black water hoses throughout the entire boat
- New freshwater and black water tank monitoring system
- New forward shower pump
- New macerator pump
- New discharge hose master shower sump
- Master head door custom modified to accommodate easier access with queen mattress
- All windows removed, powdercoated and rebedded
- Bow windows tinted

Aft Deck, Salon and Bridge

What's Next" has a great aft deck/salon that features custom seating, liquor cabinet, brand new Cool 2 Sea enclosure, updated carpeting, wing doors and more! A great back porch feel that doubles as a second salon. Both the bridge area and aft deck feature hardtops that have been freshly repainted and the bridge seating has all new cushions done in a light tan with a darker beige/gold piping that really gives the boat a more modern appearance. A back up camera as well as new spreader lights are mounted on the trailing edge of the aft deck hardtop providing additional ease of docking and lighting for the cockpit at night.

- Custom covers for helm station, salon door and bar
- Freshly Cetol covered stern deck railing
- Salon Door recently painted
- Fresh varnish on teak on flybridge
- New cushions on flybridge and aft deck
- Flybridge hardtop recently repainted
- Aft deck hardtop ceiling and wall repainted
- Helm chairs and bridge seating reupholstered

Electronics

- New Garmin 7212 Color GPS/Chartplotter (2014)

- New Garmin GMR 24 Radar (2014)
- New Garmin 200 VHF (2014)
- New Cockpit/Rear Camera (2014)
- Raymarine AutoHelm Autopilot
- Datamarine Depthfinder
- New VDO Tachometers (2013)
- Compass
- New Horn (2014)
- Bennett Trim Tabs
- Engine Synchronizer
- Stainless Steel Steering Wheel
- KVH TracVision Sat TV

Engine and Mechanicals

Low original hours and professional care make this Chesapeake Bay kept boat a stand out. Benefitting from just over 1850 hours on her 450hp 6-71ti's she has seen a recent engine tune, valve rack and injector adjustment. Multiple hoses have been replaced and other updates listed below.

Her 6-71ti's provide for an easy 19 knot cruise at 2050rpm burning a modest 32 gallons per hour! With 670 gallons of fuel capacity she has plenty of range and the comfort of a Viking ride!

- New port engine block heater installed (2014)
- New hull vents (2014)
- New batteries port/starboard/generator (2014)
- New raw water hoses starboard main (2014)
- New heat exchanger gaskets starboard main (2014)
- New Oil Exchanger Pump (2014)
- Main engines tuned, valves rack and injectors adjusted (2014)
- New bilge pump in forward bilge compartment (2015)
- New bilge pump hoses (2013)
- New water pump port motor (2013)
- Engine water intake hoses replaced (2011)
- Pick-up tubes for aft fuel tank replaced (2011)
- New through hulls / nylon and all hoses connected to nylon were replaced (2013)
- Racor Fuel Filters
- Engine Through Hull Crash Pumps
- Automatic Engine Room Fire Suppression (Re-Certified in 2014)

Electrical Equipment

- 8kw Kohler Generator in Sound Shield
- New generator stator and capacitor (2014)
- New generator raw water pump (2014)
- New generator and starting batteries (2014)
- 50amp Shorepower Service
- Battery Charger
- AC and DC Electrical Panels\
- Battery Selector Switches

Deck, Hull and Construction

- LED Running Lights and Anchor Lights (2011)
- Repainted Davit Base (2011)
- New Anchor (2011)
- Bow Viking Holes filled (2011)
- Marquipt 600lb Capacity Davit on Bow
- Tender Chocks on Bow
- All cabin windows have been removed, powder coated and rebidder
- Aft cabin windows removed, powder coated and new glass installed (2015)
- New ships bell
- Aft Deck courtesy lighting
- Custom Flybridge Hardtop
- Aft Hardtop Sunpad and rail
- Aft Hardtop overhead hatch to aft deck below
- Cockpit in gunwhale rod holders
- Cockpit rocket launcher rod holders
- Transom door
- Teak flag staff at transom
- Anchor Windlass
- Anchor Washdown
- Bow fender racks

Additional Remarks

A truly special boat that will impress an experienced yachtsman in the level of updates and quality additions that have been made by the current owners (full records available). From the removal of all the brass door hardware and lamps that were sent out to be refinished in nickel to the tasteful hard and soft good updates, "What's Next" has seen great care both cosmetically and mechanically and will make a great vessel for her next owner. Updated electronics, updated audio/visuals, updated décor and most importantly almost every system (plumbing, batteries,

windows, etc.) have been gone over. A true treat for me to represent and show!

Исключения

При продаже яхты исключаются личные вещи владельца.

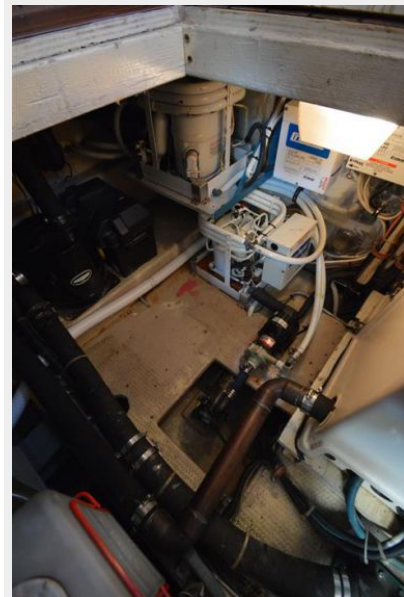
Отказ от ответственности

Компания предоставляет описание судна или яхты добросовестно, но не может гарантировать точность этой информации, а также не ручается за техническое состояние. Покупатель должен проинструктировать своих агентов или оценщиков исследовать представленную информацию более подробно, по собственному желанию. Продажа судна или яхты, изменение цены или снятие с продажи будет происходить без предварительного уведомления.

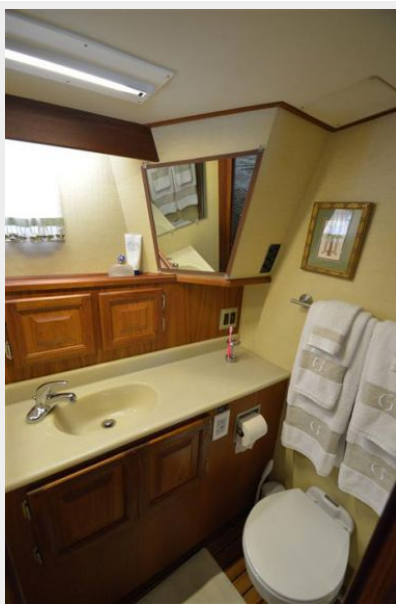
ФОТОГРАФИИ

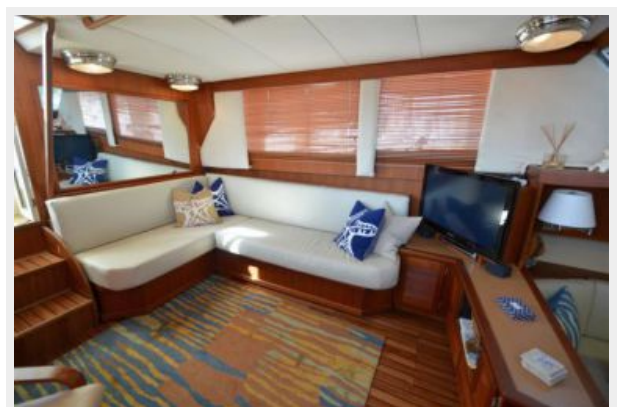
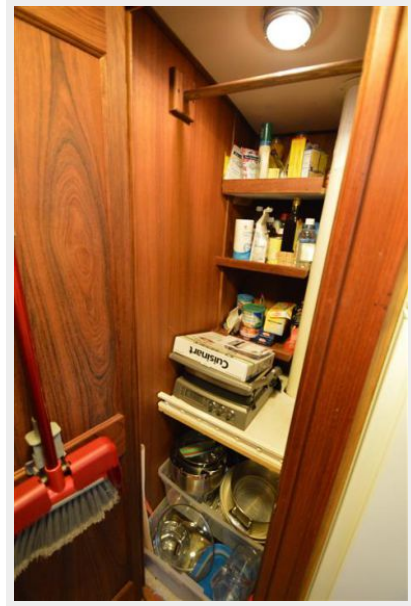














КОНТАКТЫ

Андрей Шестаков (Andrey Shestakov) – ведущий яхтенный брокер отдела продаж яхт и судов компании Shestakov Yacht Sales Inc. Официальный представитель Shestakov Yacht Sales Inc. для русскоговорящих клиентов в центральном офисе компании в Майами/Форт Лодердейл/Флорида/США.

Контактная информация

Email: andrey@shestakovyachtsales.com

Web: shestakovyachtsales.com

Телефоны

Краснодарский край: **+7(918)465-66-44**

США, Майами, Флорида: **+1(954)274-4435**

Время работы

Понедельник – Суббота: **9:00 - 21:00**
EDT

Воскресенье: **Закрито**

Адрес



Harbour Towne Marina, 850 NE 3rd St,
STE 213, Dania, FL 33004