

## CELTIC DAWN — ASTONDOA



**Судостроитель:** ASTONDOA

**Год постройки:** 2003

**Модель:** Моторная яхта

**Цена:** **ЦЕНА ЯХТЫ ПО ЗАПРОСУ**

**Местонахождение:** Italy

**Длина общая:** 103' 3" (31.45m)

**Ширина:** 23' 1" (7.03m)

**Мин. осадка:** 9' 3" (2.80m)

**Крейс. скорость:** 18 Kts. (21 MPH)

**Макс. скорость:** 26 Kts. (30 MPH)

Купить **CELTIC DAWN — ASTONDOA** а также выбрать подходящую вам яхту из нашего каталога яхт вам поможет опытный яхтенный брокер Андрей Шестаков. На сегодняшний день компания **Shestakov Yacht Sales Inc.** имеет большое количество яхт в собственном списке продаж, а также тесно сотрудничает со всеми крупными яхтенными производителями по всему миру.

Для того чтобы купить яхту **CELTIC DAWN — ASTONDOA** а также проконсультироваться по любому вопросу связанному с покупкой, продажей, чартером яхт позвоните по телефону **+7(918)465-66-44**.

# ОГЛАВЛЕНИЕ

ОГЛАВЛЕНИЕ	2
ХАРАКТЕРИСТИКИ	4
Основная информация	4
Размеры	4
Скорость, вместимость и масса	4
Размещение	4
Корпус и палуба	5
Информация о двигателе	5
ПОДРОБНОЕ ОПИСАНИЕ	6
Accommodations	6
Mechanical	6
Electrical Equipment	7
Navigation	7
Communication & Satellite Equipment	7
Audio & Visual Equipment	8
Galley & Laundry	8
Deck Equipment	8
Tenders	9
Safety & Fire Protection	9
Исключения	9
Отказ от ответственности	9
ФОТОГРАФИИ	10
Cruising with tender and toys	10
Salon	10
Master Cabin	10
Dining	10
Master Bathroom	10
VIP cabin	10

---

Twin cabin	11
Fore Deck Sun Bathing Area	11
Fore Deck	11
Aft Sun bathing Area	11
Aft Deck	11
Twin Cabin	11
Cockpit	12
Layout	12
<b>КОНТАКТЫ</b>	<b>13</b>
Контактная информация	13
Телефоны	13
Время работы	13
Адрес	13

# ХАРАКТЕРИСТИКИ

## Основная информация

Тип судна: Моторная яхта	Подкатегория: Flybridge
Модельный год: 2003	Год постройки: 2003
Год обновления: 2010	Страна: Italy
Верх: Bimini Top	Открытая палуба мостика: Да

## Размеры

Длина общая: 103' 3" (31.45m)	Ширина: 23' 1" (7.03m)
Мин. осадка: 9' 3" (2.80m)	

## Скорость, вместимость и масса

Крейс. скорость: 18 Kts. (21 MPH)	Макс. скорость: 26 Kts. (30 MPH)
Чистый вес: 173 Pounds	Вместимость воды: 1056.688208 Gallons
Объем топливного бака: 3170.064624 Gallons	

## Размещение

Всего кают: 4	Всего коек: 8
Спальные места: 8	Всего ком. состава: 5
Каюты экипажа: 3	Койки экипажа: 5
Спальных мест экипажа: 5	Комм. состав экипажа: 3

## Корпус и палуба

---

**Материал корпуса:** GRP

**Цвет корпуса:** DARK MARINE BLUE

**Отделка корпуса:** Fiberglass

## Информация о двигателе

---

**Двигатели:** 3

**Производитель:** MTU

**Модель:** 12V2000 M91

**Тип двигателя:** Inboard

**Тип топлива:** Diesel

# ПОДРОБНОЕ ОПИСАНИЕ

## Accommodations

8 guests in 4 staterooms and 5 crew in 3 cabins Celtic Dawn offers the most generous layout of the 102 GLX with four double cabins, each with their own ensuite facilities. The owner's suite and the vip cabin, which are located on the bow and stern; are equipped with a a king and a queen size bed, the other two guests cabins have single beds. The ship-owner cabin deserves special mention since it occupies the entire ship beam and is fitted with a dressing room and bathroom located in the stern, so that they act as separation in relation to the engine room. This separation plus the location of the tanks between the engines and bathroom mean that all hypothetical noise that can come from engine room is completely silenced. This, plus the engine room's exclusive soundproofing system which Astondoa uses is a guarantee for comfortable cruising under any condition. The ship's main deck contains main living room areas which are located both outdoors and indoors. The stern deck has room for a large quantity of furniture to wine and dine outdoors, which have foreseen two folding stairways on both sides of the stern mirror to descend to the swimming platform. The mirror can also be folded to facilitate the launch of the jet ski, but the main garage is in the bow, hidden beneath the solarium; here there the dinghy is located, which can be launched with the help of the crane provided for this purpose. In the interior of the stern, there is a single space divided into three atmospheres. Towards the stern, there is a large living room with sofas located on the port side, whereas the audiovisual equipment with a large screen is located on the starboard side. The dining room is located further towards the bow with a standard capacity for ten persons. Moving along the bow, an intimate and practical office is is located, with its own bathroom and which could act as a captain's cabin or an extra guest cabin and lies just below the command bridge. The bow zone is designated for the crew's kitchen and dining room, who can descend to their own two double cabins located under the fore-deck. The flybridge can be accessed from the swimming area or from the command bridge. Once in this zone, note the excellent compartmentalisation of the available space into three well differentiated sections. There is a large solarium on the bow, but both fins remain free for the surface installation of two rafts. The center is designed as an outdoor dining room with a central wood table and surrounding chairs. There are also two small seats further along the bow, where you can have a snack or form groups; this space can receive solar protection which is provided by the arch of antennas and tarpaulins which extend to the bow and stern. Finally, the bow is equipped with a navigation and service zone, with the command 2 bridges placed on port side in front of two large chairs with adjustable position, which have a replica on the starboard side so that a total of four persons can navigate in the course direction. Just behind these seats, different service furniture has been installed so that you can cook in the fly bridge and serve drinks.

## Mechanical

Engines: 3 x MTU V12 2000 M91 1103 Kw / 1500 HP (W4 -2013) Generators: 2 x Kohler/Deere 33EF07 2 x 33 Kw Kohler generators driven by a 4 cyl inline direct injection John Deere 64 HP

@ 1800 RPM 60 hz (6600 hours on both Generators as of 01/05/2015) Bow thruster: Yes, Hydraulic through PTO on engine Stern thruster: Yes, Hydraulic through PTO on engine Water maker: Idiomar Fuel separator: Alfa Laval MAB 103B-24 Air-conditioning: Condaria reverse cycle 3 compressors throughout 12.000BTU Toilet system: Tecma Boilers: 2 x Fagor (New 2013)

## Electrical Equipment

---

Voltage: 380 V - 220 V -24 Volts

Frequency: 50 Hz

Shore power converter: 380 volt

Inverter: Two Mastervolt invertors: 1 x 24 / 5000 and 1 x 24 / 3000

Batteries: 12 V/Ah (AGM 12 Volts 103 AMP 800A)

12 service batteries, 10 engine batteries, 3 generators batteries

## Navigation

---

Magnetic compass: 2 x SUUNTO D135

Log: Raymarine

Depth sounder: Furuno VCV-600L

Autopilot: Simrad AP50

Radar: Furuno LCD 12" Serie FR8062

Electronic chart system: Maxsea Zero

GPS: Furuno GP32/37 Pro

Instrumentation system (wind speed & direction): Furuno RD33

## Communication & Satellite Equipment

---

Inmarsat: Nera INM-C

Navtex: Nav5 – GMDSS NAVTEXT

VHF: Simrad

Mini M: Thrane & Thrane 3 VHF hand held radio: 5 x Icom IC-M87

Printer / fax: Panasonic

---

## Audio & Visual Equipment

---

TV/ DVD: Master Cabin: 32' Philips Matchline flatscreen TV, sat decoder DVD, Radio CD.

V.I.P. Cabin: 22' Sharp TV, , sat decoder DVD, Radio CD.

Twin Cabins: 22' Sharp TV, sat decoder DVD, Radio CD.

Satellite: KVH

Music system: B&O BEO 5 entertainment system with full surround, BEOCENTER 2, all new 2008, Skybox, BOSE 131 speaker system top and lower deck and saloon, Ipod docking station

---

## Galley & Laundry

---

Refrigerator: 8 custom built fridges/freezers

Freezer: 450 Liters

Oven: Miele convection turbo grill

Stove: Miele induction

Microwave: Miele

Icemaker: Rancilio

Dishwasher: Miele

Washing machine: Miele

Dryer: Miele

---

## Deck Equipment

---

Anchors & chain: Lofrans anchor winch and deck winches

Cranes: 2 x Mor Saverio (overhauled 2013)

Windlass: 2 x Lofran's Ercoley (overhauled 2013)



Passarelle: 1 x Mor Saverio

Bathing ladder: 1

Bimini top: 1

Stern capstans: 2

---

## Tenders

---

Tenders: Novurania DL400 + Yamaha F50 FETL (2013)

Toys: Waverunner Seadoo Wake 155hp (2010)

---

## Safety & Fire Protection

---

EPIRB: MC Murdo E3

Life rafts: 2 x 16 pax Zodiac life rafts, 14 full immersion suits, 17 life jackets, firefighting system

Life jackets: 26

Ship alarms: Yes

Bilge & fire pumps: 1 bilge pump, 2 fire pumps, 1 Yanmar auxiliary pump

Searchlight: Yes

---

## Исключения

---

При продаже яхты исключаются личные вещи владельца.

---

## Отказ от ответственности

---

Компания предоставляет описание судна или яхты добросовестно, но не может гарантировать точность этой информации, а также не ручается за техническое состояние. Покупатель должен проинструктировать своих агентов или оценщиков исследовать представленную информацию более подробно, по собственному желанию. Продажа судна или яхты, изменение цены или снятие с продажи будет происходить без предварительного уведомления.

# ФОТОГРАФИИ

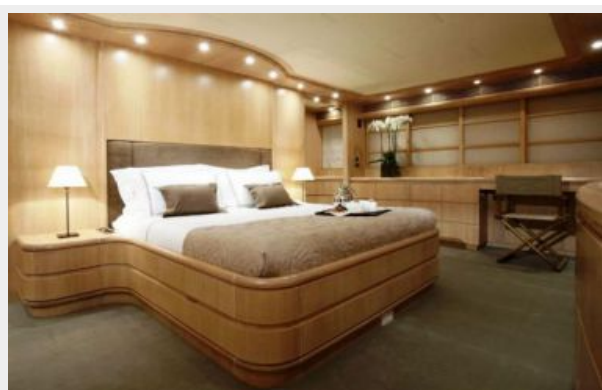
**Cruising with tender and toys**



**Salon**



**Master Cabin**



**Dining**



**Master Bathroom**



**VIP cabin**



**Twin cabin**



**Fore Deck Sun Bathing Area**



**Fore Deck**



**Aft Sun bathing Area**



**Aft Deck**



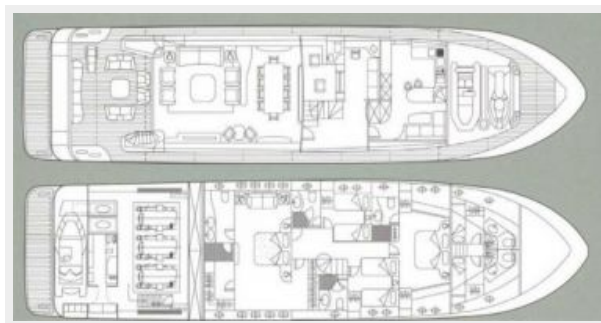
**Twin Cabin**



## Сокпит



## Layout



# КОНТАКТЫ

---

Андрей Шестаков (Andrey Shestakov) – ведущий яхтенный брокер отдела продаж яхт и судов компании Shestakov Yacht Sales Inc. Официальный представитель Shestakov Yacht Sales Inc. для русскоговорящих клиентов в центральном офисе компании в Майами/Форт Лодердейл/Флорида/США.

## Контактная информация

---

Email: [andrey@shestakovyachtsales.com](mailto:andrey@shestakovyachtsales.com)

Web: [shestakovyachtsales.com](http://shestakovyachtsales.com)

## Телефоны

---

Краснодарский край: **+7(918)465-66-44**

США, Майами, Флорида: **+1(954)274-4435**

## Время работы

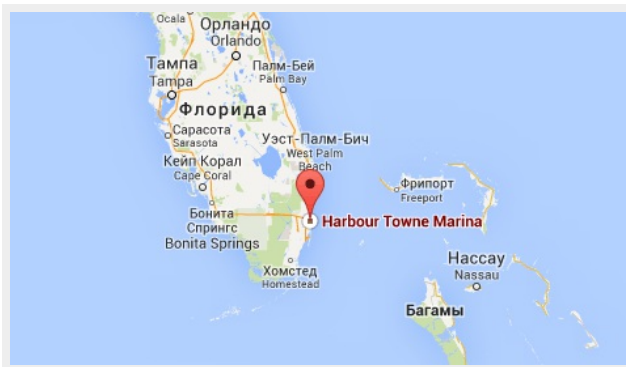
---

Понедельник – Суббота: **9:00 - 21:00**  
EDT

Воскресенье: **Закрито**

## Адрес

---



Harbour Towne Marina, 850 NE 3rd St,  
STE 213, Dania, FL 33004