

VIKING SPORTFISH — VIKING



Судостроитель: VIKING

Год постройки: 2001

Модель: Катер для спортивной рыбалки

Цена: **ЦЕНА ЯХТЫ ПО ЗАПРОСУ**

Местонахождение: Puerto Rico

Длина общая: 50' 0" (15.24m)

Ширина: 16' 4" (4.98m)

Макс. осадка: 4' 9" (1.45m)

Крейс. скорость: 33 Kts. (38 MPH)

Макс. скорость: 39 Kts. (45 MPH)

Купить **Viking Sportfish — VIKING** а также выбрать подходящую вам яхту из нашего каталога яхт вам поможет опытный яхтенный брокер Андрей Шестаков. На сегодняшний день компания **Shestakov Yacht Sales Inc.** имеет большое количество яхт в собственном списке продаж, а также тесно сотрудничает со всеми крупными яхтенными производителями по всему миру.

Для того чтобы купить яхту **Viking Sportfish — VIKING** а также проконсультироваться по любому вопросу связанному с покупкой, продажей, чартером яхт позвоните по телефону **+7(918)465-66-44**.

ОГЛАВЛЕНИЕ

ОГЛАВЛЕНИЕ	2
ХАРАКТЕРИСТИКИ	7
Обзор	7
Основная информация	7
Размеры	8
Скорость, вместимость и масса	8
Размещение	8
Корпус и палуба	8
Информация о двигателе	8
ПОДРОБНОЕ ОПИСАНИЕ	9
Dimensions	9
Engines & Generator	9
Tankage	9
Main Salon	9
Dinette / Galley	10
Companionway	10
Accommodations	10
Cockpit	12
ENGINE ROOM	12
FLYBRIDGE	13
Electronics	13
Bow	13
Исключения	14
Отказ от ответственности	14
ФОТОГРАФИИ	15
Viking 50 2001	16
Cockpit - New Mezzanine in 2012	16
Alwrip Paint Job	16

Hull & Top Alwrip Painted - Painted un 2012	16
Viking 50 Cockpit -	16
Teak & Holly Cokpit - New in 2012 Teak & Holly including Swim Platform	17
Mezzanie - New Mezzanine in 2012 with Freezer & Refrigerator	17
Flybridge Ladder - New style Flybridge Ladder in 2012 to fit Mezzanine	17
Bow Rail - Bow brackets for Paddle Boards & Kayaks	17
Pulpit - With Windlass	17
Teak & Holly Floor - Installed in 2012	18
Cockpit Table - Removable Wood Table	18
Cockpit Freezer - Freezer & Refrigerator Under Mezzanine	18
Under Entry Step Refrigerator	18
Custom Aft Cockpit Cabinet - Includes: Electric Grill & Sink	18
Aft Bilge Compartment	18
Cockpit Electric Grill & Sink	19
New Flybridge Ladder	19
Flybridge Ladder Security Door	19
New Flybridge Cushions	19
Flybridge Cushions	19
Bow	20
New Helm Enclosure	20
Flybridge - Custom teak helm bubble with single-lever controls, polished stainless steel control handles and steering wheel	20
Flybridge - Custom Electronic Display	20
Electronics - (2) Garmin 4212 GPS/Chartplotter	20
Electronics - Garmin 4212GPS	20
Electronics - Garmin 4212GPS Radar / Sounder	21
Electronics - Icom M504 VHF Additional Garmin 4208GPS	21
Electronics - Simrad AP20 Autopilot Clarion CMD6 Radio	21
Electronics - Icom M504	21

Flybridge - Single Level Integrated Bow Thruster Control	21
Electronics - Garmin 4208	21
Flybridge - Helm Windlass Foot Switch	22
Flybridge - Helm Chairs	22
Flybridge - Helm Chair Pedestal	22
Main Salon - New Luxury Custom Décor New Salon Teak interior	22
Main Salon - Bar Stools	22
Main Salon - Custom Countertop Bar Up/Down Bar Stools	23
Main Salon - Custom Sofa	23
Dinette - Teak dinette table w/ teak pedestal L-shaped settee w/ storage	23
Main Salon -	23
Dinette Wood Table	23
Main Salon - New Salon Headliner with Wood Trim	24
Main Salon - New shades	24
Main Salon - Custom behind TV Storage	24
Main Salon - Behind TV Cabinet	24
Galley - Corian countertops "Sierra Aurora" w/ Corian sink "Bone"	24
Galley - Subzero Refrigerators	24
Galley - New SubZero Refrigerator and Freezer	25
Galley - Sharp Microwave Convection	25
Galley - Recessed electric two-burner stove top	25
Galley - Corian sink "Bone" Grohe galley faucet	25
Companionway - Wood Floor throughout boat with New liners	25
Cruiseair A/C	25
Master Stateroom- Two end table units w/ lamps Overhead lighting & reading lights Stereo speakers Cruiseair SMXII air conditioning	26
Master Stateroom - Walk-around queen bed w/ two storage drawers & lift top for bulk storage New Headboard w/ mirror behind	26
Master Stateroom - Master Headboard with Mirror	26
Master Stateroom - Ample storage drawers	26

Master Head - Vacuum flush head Vanity counter w/ sink & storage Medicine cabinet w/ mirror	
Master Stateroom - Vanity area w/ mirror & seat	27 ²⁷
Master Head - Stall shower	27
Foward Guest Stateroom	27
Foward Guest Stateroom - Upper & lower bunks Storage below bunks	27
Foward Guest Stateroom	27
Guest Head - Access doors to companionway & Fwd stateroom Vacuum flush head Medicine cabinet w/ mirror Vanity counter w/ sink & storage	28
Foward Guest Stateroom - Flatscreen TV	28
Port Guest Stateroom - Upper & lower bunks Storage below bunks Hanging locker	28
Guest Head - Stall shower	28
Washer & Dryer	28
Engine Room - Wood Floor Batteries in fiberglass boxes	29
Engine Room - Emergency Y-valve pumps	29
Engine Room - MAN 1,300 hp	29
Engine Room - Phasor 12.5kw Backup Generator	29
Engine Room	29
Phasor 12.5kw - Like New backup Generator	30
Phasor 12.5kw - Backup Generator	30
Engine Room - Charles ISO boost/volt stabilizer	30
Main Generator - Onan 19kw	30
Engine Room - Mastervolt battery chargers 12/50-3	30
Engine Room - Watermaker Filters	30
Engine Room - Watermaker	31
Engine Room	31
Engine Room	31
Glendenning Cablemaster	31
КОНТАКТЫ	32
Контактная информация	32
Телефоны	32

Время работы	32
Адрес	32

ХАРАКТЕРИСТИКИ

Обзор

If you are in the market for one of the finest 50 Convertibles ever has been built, can not miss this one!

Owner has a open checkbook and spent over 200k in upgrades between 2012-2013. With MAN 1,300hp faster than all other in the market, less than 900hrs and MAN 1,000hrs engine maintenance already done she's ready to make her new owner extremely happy.

Upgrades Includes:

Complete Hull and top painted in alwrp

Mezzanine with Freezer and refrigerated cooler

New Cockpit Teak

Custom teak helm bubble with single-lever controls, polished stainless steel control handles and steering wheel

Custom Helm Electronics fiberglass layout

New Electronics

6 LED Underwaterlights

2 Generators 19kw & 12.5kw

Single lever Bow Thruster Control

Custom interior bar top and stools

New Interior Decor

And more..... DYSID:2839179

Основная информация

Тип судна: Катер для спортивной рыбалки

Подкатегория: Convertible

Модельный год: 2001

Год постройки: 2001

Страна: Puerto Rico

Размеры

Длина общая: 50' 0" (15.24m)

Ширина: 16' 4" (4.98m)

Макс. осадка: 4' 9" (1.45m)

Скорость, вместимость и масса

Крейс. скорость: 33 Kts. (38 MPH)

Макс. скорость: 39 Kts. (45 MPH)

Водоизмещение: 58814 Pounds

Вместимость воды: 208 Gallons

Вместимость сточного бака: 51 Gallons

Объем топливного бака: 1050 Gallons

Размещение

Всего кают: 3

Всего ком. состава: 2

Корпус и палуба

Материал корпуса: Fiberglass

Информация о двигателе

Двигатели: 2

Производитель: MAN

Модель: 2842LE404

Тип двигателя: Inboard

Тип топлива: Diesel

ПОДРОБНОЕ ОПИСАНИЕ

Dimensions

- Builder: Viking
- Designer: B. Wilson
- LOA: 50 ft 0 in
- Beam: 16 ft 4 in
- Maximum Draft: 4 ft 9 in
- Displacement: 58814 lbs

Engines & Generator

- Total Power: 2,600 HP
- Twin MAN Diesel Engines
- Engine Model: 2842LE404
- Engine Power: 1300 HP
- **Less than 900hrs
- Onan 19kw
- Phasor 12.5kw

Tankage

- Fresh Water Tank: Aluminum (208 Gallons)
- Fuel Tank: Aluminum (1005 Gallons)
- Holding Tanks: (51 Gallons)

Main Salon

- New Luxury Custom Décor
- New Salon Teak
- Interior Custom Carpeting
- New shades
- Flat Screen TV
- Home theater system w/ SAT TV, DVD/VCR, tuner & CD player

- New L-shaped sofa w/ storage and wood side tables
- New Stainless Steel up/down Bar Stools
- Teak & holly amtico at salon entrance
- Cruiseair SMXII air conditioning
- Electrical panel
- Quartz light dimmers
- Overhead lighting
- Indirect lighting

Dinette / Galley

- Teak dinette table w/ teak pedestal
- L-shaped settee w/ storage

Galley:

- Amtico teak & holly flooring
- Corian countertops "Sierra Aurora" w/ Corian sink "Bone"
- Recessed electric two-burner stove top
- Sharp carousel microwave/convection oven
- New SubZero Refrigerator and Freezer
- Pantry storage forward of refrigerator
- Storage cabinets and drawers
- Grohe galley faucet
- Garbage disposal

Companionway

- Central vac
- Wood Step
- Storage under steps
- Acrylic handrail
- Custom wood flooring

Accommodations

Master Stateroom

- Walk-around queen bed w/ two storage drawers & lift top for bulk storage
- New Headboard w/ mirror behind
- Two end table units w/ lamps
- Overhead lighting & reading lights
- Stereo speakers
- Cruiseair SMXII air conditioning
- Vanity area w/ mirror & seat
- Bomar overhead hatch with Ocean air screens w/ Black-out shades
- Hanging locker Ample storage drawers
- Flat Screen TV

Master Head

- Vacuum flush head
- Stall shower
- Vanity counter w/ sink & storage
- Medicine cabinet w/ mirror
- Air conditioning
- Exhaust vent

Forward Guest Stateroom

- Upper & lower bunks
- Storage below bunks
- Storage drawer below bunk
- Hanging locker
- Flat Screen TV
- Overhead lighting
- Bomar overhead hatch with Ocean air screens w/ Black-out shades

Guest Head

- Access doors to companionway & Fwd stateroom
- Vacuum flush head
- Stall shower Medicine cabinet w/ mirror
- Vanity counter w/ sink & storage
- Air conditioning
- Exhaust vent

Port Guest Stateroom

- Upper & lower bunks
- Storage below bunks
- Hanging locker
- Stereo speakers
- Overhead lighting
- Bomar overhead hatch with Ocean air screens w/ Black-out shades

Cockpit

- Custom Aft Electric Grill Cabinet with sink and Faucet
- New Teak & Holly cockpit floor
- New Mezzannie with freezer and step refrigerator
- Custom Flybridge Ladder with bridge door
- (4) Rod Holders
- Indirect lights
- Transom door & lift gate
- Rupp double spreader outriggers
- Direct engine room access
- Fresh & salt water connections
- Glendinning Cablemaster 50 amp shore power service
- Fiberglass door w/ teak interior
- Fiberglass swim platform with teak & holly finish

ENGINE ROOM

- Awlgrip painted at factory
- Power assist steering
- Oil change system
- High water alarm
- Dripless shaft logs
- Engine start/stop switches
- Charles ISO boost/volt stabilizer
- Mastervolt battery chargers 12/50-3
- Watermaker- Sea-R.O.
- Bilge blowers
- Onan main generator
- Phasor auxiliary generator
- Fresh water washdown
- Hot water heater

- Emergency Y-valve pumps
- Batteries in fiberglass boxes
- Fire control system
- Bilge pumps
- Circulation fans
- Gauges at engine room entrance
- Fuel priming pumps
- Racor fuel filters

FLYBRIDGE

- Custom teak helm bubble with single-lever controls, polished stainless steel control handles and steering wheel
- Fiberglass hardtop
- LED Spreader Lights
- Lexan center panel enclosure
- Hynautic hydraulic controls
- Clarion stereo
- Six rod holders on bridge rail
- Murray Bros. helm & companion chairs
- Portside bench seating w/ storage Forward L-bench seating w/ storage under
- JL Stereo speakers
- Bennett automatic trim tab controls

Electronics

- (2) Garmin 4212 GPS/Chartplotter
- Garmin HD Radar
- Garmin Sounder with Transducer
- Garmin 4208 GPS/Chartplotter
- Icom M504 VHF
- Simrad AP20 Autopilot
- Clarion CMD6
- JL Speakers
- Compass
- 6 Underwaterlights LED

Bow

- Bow Pulpit
- Windlass

- Bow Rail
- Aluminum rack for paddle board and kayaks

Исключения

При продаже яхты исключаются личные вещи владельца.

Отказ от ответственности

Компания предоставляет описание судна или яхты добросовестно, но не может гарантировать точность этой информации, а также не ручается за техническое состояние. Покупатель должен проинструктировать своих агентов или оценщиков исследовать представленную информацию более подробно, по собственному желанию. Продажа судна или яхты, изменение цены или снятие с продажи будет происходить без предварительного уведомления.

ФОТОГРАФИИ



Viking 50 2001



Cockpit - New Mezzanine in 2012



Alwrip Paint Job



Hull & Top Alwrip Painted - Painted un 2012



Viking 50 Cockpit -



Teak & Holly Cokpit - New in 2012 Teak & Holly including Swim Platform



Mezzanie - New Mezzanine in 2012 with Freezer & Refrigerator



Flybridge Ladder - New style Flybridge Ladder in 2012 to fit Mezzanine



Bow Rail - Bow brackets for Paddle Boards & Kayaks



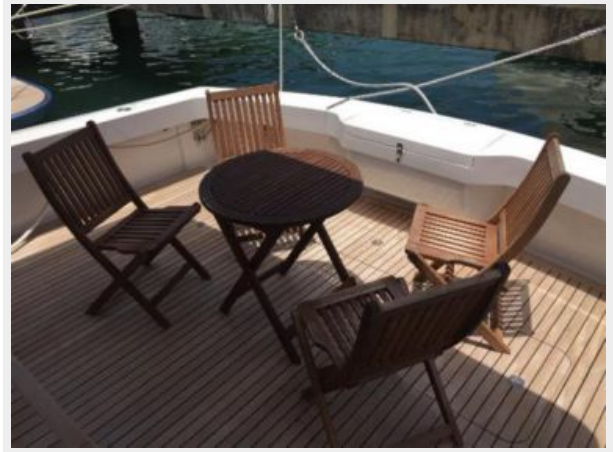
Pulpit - With Windlass



Teak & Holly Floor - Installed in 2012



Cockpit Table - Removable Wood Table



Cockpit Freezer - Freezer & Refrigerator Under Mezzanine



Under Entry Step Refrigerator



Aft Bilge Compartment



**Custom Aft Cockpit Cabinet - Includes:
Electric Grill & Sink**



Cockpit Electric Grill & Sink



New Flybridge Ladder



Flybridge Ladder Security Door



New Flybridge Cushions



Flybridge Cushions



Bow



New Helm Enclosure



Flybridge - Custom Electronic Display



Flybridge - Custom teak helm bubble with single-lever controls, polished stainless steel control handles and steering wheel



Electronics - (2) Garmin 4212 GPS/Chartplotter



Electronics - Garmin 4212GPS



**Electronics - Garmin 4212GPS Radar /
Sounder**



**Electronics - Icom M504 VHF Additional
Garmin 4208GPS**



Electronics - Icom M504



**Electronics - Simrad AP20 Autopilot Clarion
CMD6 Radio**



Electronics - Garmin 4208



**Flybridge - Single Level Integrated Bow
Thruster Control**



Flybridge - Helm Windlass Foot Switch



Flybridge - Helm Chairs



Flybridge - Helm Chair Pedestal



Main Salon - New Luxury Custom Décor New Salon Teak interior



Main Salon - Bar Stools



**Main Salon - Custom Countertop Bar
Up/Down Bar Stools**



Main Salon - Custom Sofa



Main Salon -



**Dinette - Teak dinette table w/ teak pedestal
L-shaped settee w/ storage**



Dinette Wood Table



Main Salon - New Salon Headliner with Wood Trim



Main Salon - New shades



Main Salon - Custom behind TV Storage



Main Salon - Behind TV Cabinet



Galley - Corian countertops "Sierra Aurora" w/ Corian sink "Bone"



Galley - Subzero Refrigerators



Galley - New SubZero Refrigerator and Freezer



Galley - Sharp Microwave Convection



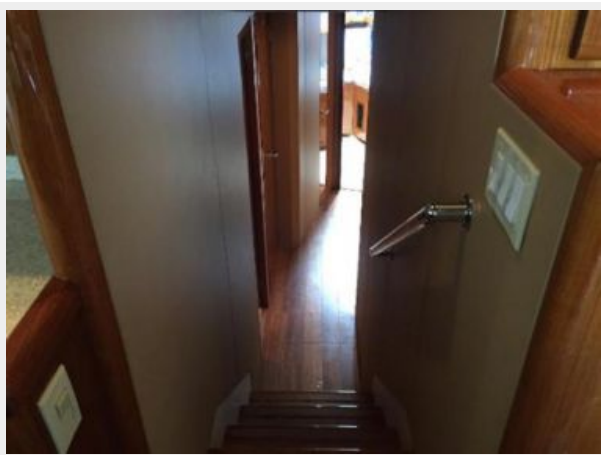
Galley - Recessed electric two-burner stove top



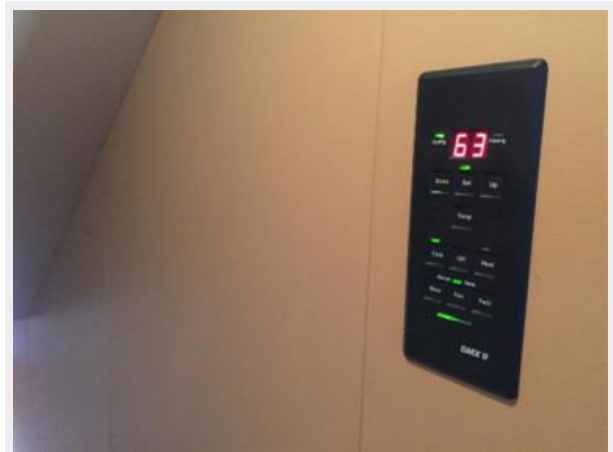
Galley - Corian sink "Bone" Grohe galley faucet



Companionway - Wood Floor throughout boat with New liners



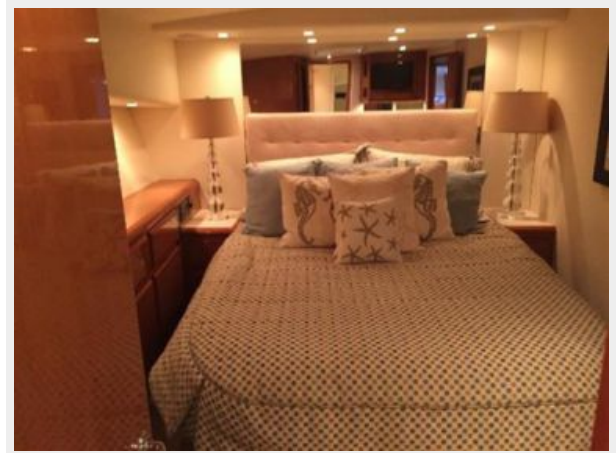
Cruiseair A/C



Master Stateroom - Walk-around queen bed w/ two storage drawers & lift top for bulk storage New Headboard w/ mirror behind



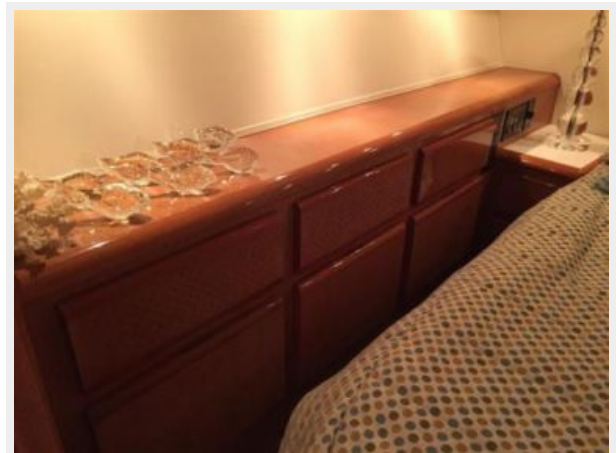
Master Stateroom- Two end table units w/ lamps Overhead lighting & reading lights Stereo speakers Cruiseair SMXII air conditioning



Master Stateroom - Master Headboard with Mirror



Master Stateroom - Ample storage drawers



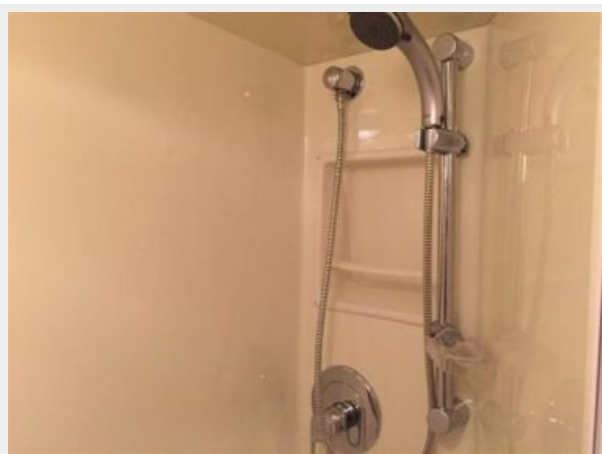
Master Stateroom - Vanity area w/ mirror & seat



Master Head - Vacuum flush head Vanity counter w/ sink & storage Medicine cabinet w/ mirror



Master Head - Stall shower



Foward Guest Stateroom



Foward Guest Stateroom



Foward Guest Stateroom - Upper & lower bunks Storage below bunks



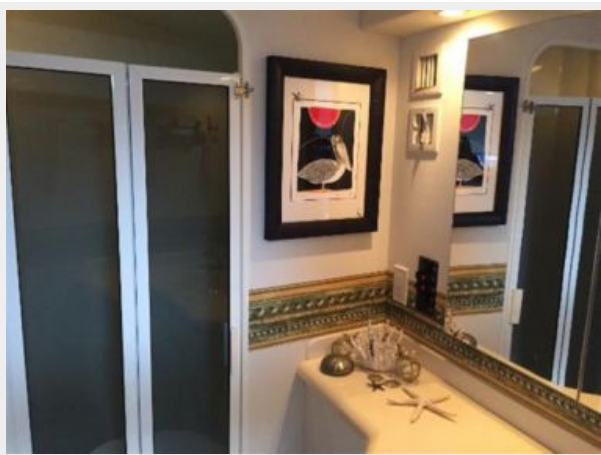
Foward Guest Stateroom - Flatscreen TV



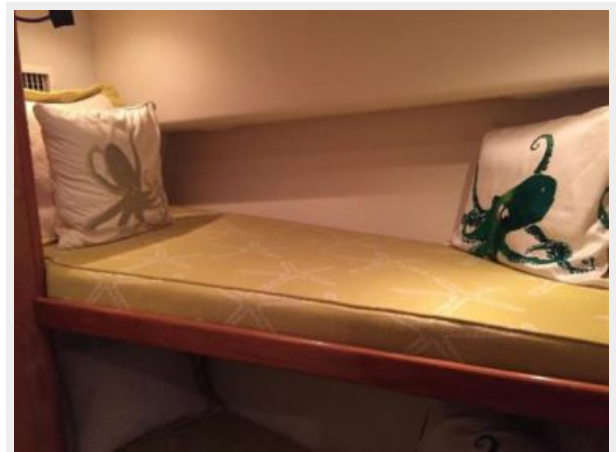
Guest Head - Access doors to companionway & Fwd stateroom Vacuum flush head Medicine cabinet w/ mirror Vanity counter w/ sink & storage



Guest Head - Stall shower



Port Guest Stateroom - Upper & lower bunks Storage below bunks Hanging locker



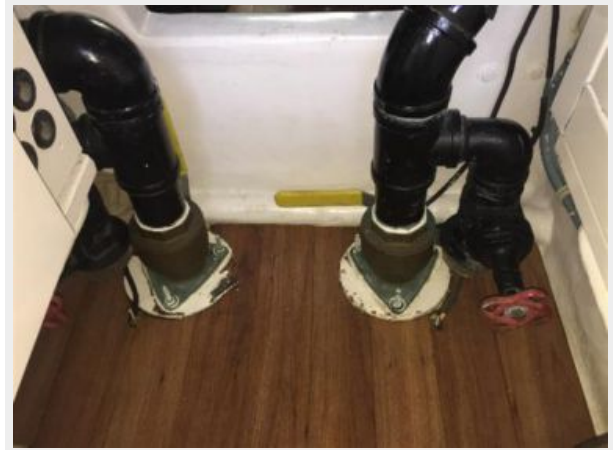
Washer & Dryer



Engine Room - Wood Floor Batteries in fiberglass boxes



Engine Room - Emergency Y-valve pumps



Engine Room - MAN 1,300 hp



Engine Room



Engine Room - Phasor 12.5kw Backup Generator



Phasor 12.5kw - Like New backup Generator



Phasor 12.5kw - Backup Generator



Main Generator - Onan 19kw



Engine Room - Charles ISO boost/volt stabilizer



Engine Room - Watermaker Filters



Engine Room - Mastervolt battery chargers 12/50-3



Engine Room - Watermaker



Engine Room



Engine Room



Glendenning Cablemaster



КОНТАКТЫ

Андрей Шестаков (Andrey Shestakov) – ведущий яхтенный брокер отдела продаж яхт и судов компании Shestakov Yacht Sales Inc. Официальный представитель Shestakov Yacht Sales Inc. для русскоговорящих клиентов в центральном офисе компании в Майами/Форт Лодердейл/Флорида/США.

Контактная информация

Email: andrey@shestakovyachtsales.com

Web: shestakovyachtsales.com

Телефоны

Краснодарский край: **+7(918)465-66-44**

США, Майами, Флорида: **+1(954)274-4435**

Время работы

Понедельник – Суббота: **9:00 - 21:00**
EDT

Воскресенье: **Закрето**

Адрес



Harbour Towne Marina, 850 NE 3rd St,
STE 213, Dania, FL 33004