

SCOTT FREE V — FLEMING YACHTS



Судостроитель: FLEMING YACHTS

Год постройки: 1998

Модель: Моторная яхта

Цена: ЦЕНА ЯХТЫ ПО ЗАПРОСУ

Местонахождение: United States

Длина общая: 55' 0" (16.76m)

Ширина: 16' 5" (5.00m)

Макс. осадка: 5' 0" (1.52m)

Крейс. скорость: 10 Kts. (12 MPH)

Макс. скорость: 17 Kts. (20 MPH)

Купить **SCOTT FREE V — FLEMING YACHTS** а также выбрать подходящую вам яхту из нашего каталога яхт вам поможет опытный яхтенный брокер Андрей Шестаков. На сегодняшний день компания **Shestakov Yacht Sales Inc.** имеет большое количество яхт в собственном списке продаж, а также тесно сотрудничает со всеми крупными яхтенными производителями по всему миру.

Для того чтобы купить яхту **SCOTT FREE V — FLEMING YACHTS** а также проконсультироваться по любому вопросу связанному с покупкой, продажей, чартером яхт позвоните по телефону **+7(918)465-66-44**.

ОГЛАВЛЕНИЕ

ОГЛАВЛЕНИЕ	2
ХАРАКТЕРИСТИКИ	5
Обзор	5
Основная информация	5
Размеры	5
Скорость, вместимость и масса	5
Размещение	6
Корпус и палуба	6
Информация о двигателе	6
ПОДРОБНОЕ ОПИСАНИЕ	7
Accommodations	7
Salon	7
Galley	7
Audio/Video	7
Pilothouse	7
Flybridge	8
Aft Station	8
Electrical systems	8
Deck and Construction Details	8
Canvas	9
Lazarette	9
Bridge Deck	9
Cockpit	9
Mechanical Equipment	9
Remarks	10
Disclaimer	10
Исключения	10
Отказ от ответственности	10

ФОТОГРАФИИ	11
Salon	11
Salon	11
Salon	11
Galley	11
Galley	11
Full Size Refrigerator	11
Companionway/Steps to Wheelhouse	12
Pilothouse Helm	12
Pilothouse	12
Pilothouse	12
Master Bath	12
Master Stateroom	12
Guest Stateroom	13
Guest Head	13
Aft Deck	13
Guest Stateroom	13
Aft Deck	14
Aft Deck	14
Aft Deck	14
Aft Deck Steering	14
Lazarette	15
Lazarette	15
Lazarette/Watermaker	15
Starboard Generator	15
Port Generator	15
Engine Room	15
Flybridge	16
Flybridge Helm	16

Flybridge	16
Flybridge	16
Covered Tender	16
Tender	16
Outboard	17
Portuguese Bridge	17
Bow	17
Bridge Deck Drawing	17
Main Deck Drawing	17
Accommodations Drawing	17
Pilothouse Drawing	18
Engine Room Drawing	18
Speed/Sound	18
Line Drawings	18
КОНТАКТЫ	19
Контактная информация	19
Телефоны	19
Время работы	19
Адрес	19

ХАРАКТЕРИСТИКИ

Обзор

VIRTUAL TOUR: <http://yachtprofile.com/ypfl55> **SCOTT FREE V**, 55' Fleming Pilothouse motoryacht, 1997/98 model, and a third owner vessel, is equipped with new twin gens, 3208 CATS, watermaker, dinghy & davit, bow thruster, and Naiad stabilizers. Her layout features 3 staterooms with two heads. **SCOTT FREE V** is located in Fort Lauderdale and easy to show.

Основная информация

Тип судна: Моторная яхта	Подкатегория: Raised Pilothouse
Модельный год: 1997	Год постройки: 1998
Страна: United States	Верх: Bimini Top
Открытая палуба мостика: Да	Кубрик: Да

Размеры

Длина общая: 55' 0" (16.76m)	Ширина: 16' 5" (5.00m)
Макс. осадка: 5' 0" (1.52m)	

Скорость, вместимость и масса

Крейс. скорость: 10 Kts. (12 MPH)	Крейсерская скорость поворота: 1500 Kts.
Макс. скорость: 17 Kts. (20 MPH)	Макс. скорость поворота: 2800 Kts.
Водоизмещение: 66000 Pounds	Вместимость воды: 300 Gallons
Вместимость сточного бака: 100 Gallons	Объем топливного бака: 1000 Gallons

Размещение

Всего кают: 3

Корпус и палуба

Материал корпуса: Fiberglass

Информация о двигателе

Двигатели: 2

Производитель: Caterpillar

Модель: 3208 STA

Тип двигателя: Inboard

Тип топлива: Diesel

ПОДРОБНОЕ ОПИСАНИЕ

Accommodations

The master stateroom is forward featuring a queen Island berth with storage below, two full size hanging lockers, drawer storage, and book shelves with two overhead hatches. The master head includes a sink, vanity, mirror, Headhunter head system, and stall shower with Grohe thermostatic controlled faucet. There is also a Samsung 19" flat-screen TV and KVH SAT TV in the master stateroom. Starboard guest stateroom has upper/lower berth drawers, mirror, and vanity. New bed shams 2009. Port guest stateroom has twin berths, closet, mirror, and drawers. New bed shams 2009. Guest head is forward of the starboard guest stateroom and includes a sink, vanity, mirror, and stall shower with Grohe thermostatic controlled faucet. Asko 220V washer with separate dryer in companionway (new 2007).

Salon

One enters the salon through double opening doors. Looking forward to starboard is an entertainment center for the Vizio 19" flat-screen TV and storage cabinets. To port is a dry bar unit with teak top and icemaker, an L-shaped couch, two salon chairs with new seat cushions in 2011, and a teak hi/lo table. There is an overhead teak rail in the salon which provides a safe handhold. Salon settee sofa cushions and back rest (2014).

Galley

The U-shaped galley is forward of the salon. All appliances are high quality. Equipment includes: Sharp convection microwave oven, 2012 Double sink with disposal Grohe mixer faucets Kenyon deluxe 3-burner cooktop 220V oven under cooktop GE Side-by-side refrigerator/freezer - full size Corian counter tops Dumb waiter to flybridge Ample storage and dish lockers Teak and holly sole Garbage drawer Dishwasher 20-Gallon hot water heater

Audio/Video

Boston Acoustics high fidelity speakers in salon with Kenwood CD player KVH SAT TV in master and salon Vizio 20" flat screen in salon Samsung 19" flat screen TV in master

Pilothouse

From the galley, step up a two-step stairway to the pilothouse, enter and exit from the pilothouse to side decks through sliding doors, or you can go up to the flybridge through a sliding hatch and doors. The pilothouse includes an L-shaped sofa & table, custom Stidd helm chair (redone 04/2015), and ample chart storage in drawers, wet hanging locker, and a full array of flush

mounted electronics. Teak and holly soles throughout, tinted windows, mini blinds, cushions, and linens. Pilothouse settee cushions and back rest (2014) Electronics - Pilothouse: Furuno 7112D radar, 4' antenna, ARP 72-mile radar Furuno depth finder with color sounder 585, 2011 Raymarine chart plotter (A-Series multi) Raymarine E140 multi-function display, 2013 (GPS) ICOM SSB M700 with built-in 30-watt with hailer and remote microphone Standard Horizon GY2100 VHF radio Robertson autopilot AP30 Compass display Heart interface Link 2000 inverter Glendinning synchronizer JVC CD player with two speakers FloScan fuel flow meters B&G digital speed/depth B&G wind speed and direction Wesmar bow thruster control Naiad stabilizer control ACR spotlight Sony black & white monitor with aft flybridge camera and engine room

Flybridge

Raymarine A-Series chart plotter, depth, speed Robertson autopilot remote Wesmar bow thruster control B&G Speed/depth repeaters Garmin GPS Map 700 series ACR searchlight control Synchronizer control Standard VHF Furuno FMD remote display for radar (2011 update) Teak deck in seating area New Bimini canvas (2012) Revere 6-man liferaft Nautica 12' dinghy with Yamaha 40 hp outboard with cover (2010) Quick lift hydraulic 1000 lbs davit (2014) (2) Outrigger poles New flybridge cushions, (2015) Helm cover Console cover Flybridge seating cover Brownies dive compressor in deck box (2011) KVH Trac Vision

Aft Station

Robertson autopilot remote Wesmar bow thruster control Remote fire extinguisher override Engine start/stop (2) Shakespeare 23" VHF antennas. All antennas have stainless mounting hardware

Electrical systems

Northern Lights 12 kW generator, new 2014 (Port 1800 rpm - 5 hours) Northern Lights 9 kW generator, 2013 (Starboard 1800 rpm - 50 hours) AC/DC electrical system AC/DC electrical panel with circuit breakers 24V DC system 220V AC system Gel cell batteries Forward and aft shore connect Paralleling solenoids and switches Battery isolators Cablemaster shore cord reel - aft, 50-amp ProMariner 12-volt charger, 20-amp Victron 24-volt charger, 60 amp Newmar DC converter Heart interface 2500 inverter (2) 30-amp shore plug-in - Bow (1) 50-amp plug-in - Bow

Deck and Construction Details

Vinylester resin below waterline Fiberglass fuel tanks Swim ladder Heavy duty pantograph windshield wipers Halogen deck light on custom mast Stainless steel hardware in pilothouse table Stainless steel transom handrails Stainless steel pulpit handrails Teak deck in cockpit Teak

deck on flybridge Teak bow rail Hinged radar arch 4-Blade props Teak trim, cap rail and cover-board Simulated planking grooves in hull-side Cockpit storage under ladder to flybridge Cockpit controls Stainless steel protective shoe on keel Custom tender chocks with hold downs (4) Rod holders in cockpit Integrally molded guard with stainless rub Bow pulpit, anchor and windlass Pilothouse bulwark doors port and starboard Plow with 250' high test chain Additional anchor with chain/rope Danforth spray rails Foredeck and Portuguese decks non-skid, new 2007 (2) Additional Danforth anchors Lofrans electric windlass Phone & TV plug-in - Bow Bottom sanded, repainted with Seahawk Tropicote (2014) Prop speed shafts, props, struts, rudders, and trim tabs (2014)

Canvas

Bimini top, custom vinyl with stainless steel hardware - new canvas 2012 Flybridge console cover Flybridge helm seat cover Flybridge custom cushions, new 2015 Tender cover, 2012 Bimini extension over seating area on flybridge

Lazarette

Watermakers, Inc., model ISL 300 water maker, 19 gph Fiberglass hatches with teak facing Intake vents for engine room DC lighting Plastic water tanks with sight gauges (4) Cruisair AC compressors in master, guest, salon, and pilothouse Main engine mufflers Vast storage capabilities

Bridge Deck

Plexiglass windshield with stainless handrail Steering console with controls and engine instrumentation Cushioned seating for ten with stowage Molded fiberglass table with stowage space and drink holders Folding hatch doors provides access to the pilothouse Custom mast with KVH antenna Ladder leading down to the cockpit

Cockpit

Teak decks Varnished teak covering boards Deck drains overboard Aft cockpit sunshade cover Cockpit control station Hot and cold shower

Mechanical Equipment

Caterpillar 3208 STA turbo-charges engines, 435 hp (Port engine has fewer hours due to a rebuild that was covered under Caterpillar warranty. Hour meters were not changed). Naiad hydraulic stabilizers Fireboy automatic engine room fire extinguisher Hynautic engine controls at all three helms Hynautic hydraulic steering VD full engine instrumentation Reverse cycle AC with

4-zone SMX controls Wesmar 10 hp, 24V bow thruster Electric oil change system Trim tabs with indicators Manual whale pump Fresh water filter Air Seps installed on main engines

Remarks

SCOTT FREE V, 1997/98 model, and a third owner vessel, is an elegantly styled 55 pilothouse motoryacht, with a semi-displacement hull that has proven to be easily driven as well as extremely comfortable and sea-kindly. The shape of the entry at the bow rolls the water away from the hull and its height and flare keep heavy seas off the deck at all speeds. SCOTT FREE V features twin generators, watermaker, CAT engines, bow thruster, and a 12' dinghy with davit.

Disclaimer

In late November 2013 due to port engine starter motor fire, extensive work was performed and completed (March 2014) throughout the engine room. The CAT engines were serviced and removed in order to complete the necessary work. Most major components were repaired or replaced as necessary. Service records will be available upon request.

Исключения

При продаже яхты исключаются личные вещи владельца.

Отказ от ответственности

Компания предоставляет описание судна или яхты добросовестно, но не может гарантировать точность этой информации, а также не ручается за техническое состояние. Покупатель должен проинструктировать своих агентов или оценщиков исследовать представленную информацию более подробно, по собственному желанию. Продажа судна или яхты, изменение цены или снятие с продажи будет происходить без предварительного уведомления.

ФОТОГРАФИИ

Salon



Salon



Salon



Galley



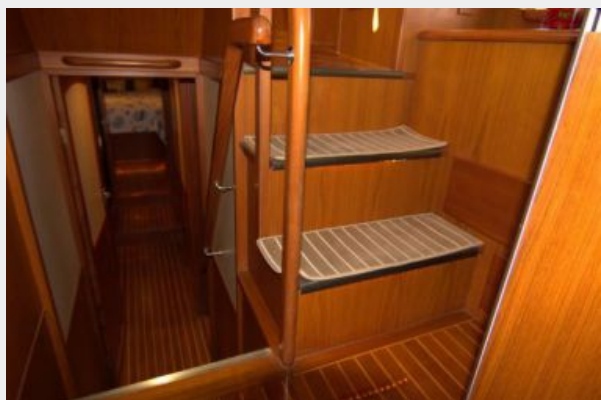
Galley



Full Size Refrigerator



Companionway/Steps to Wheelhouse



Pilothouse Helm



Pilothouse



Pilothouse



Master Stateroom



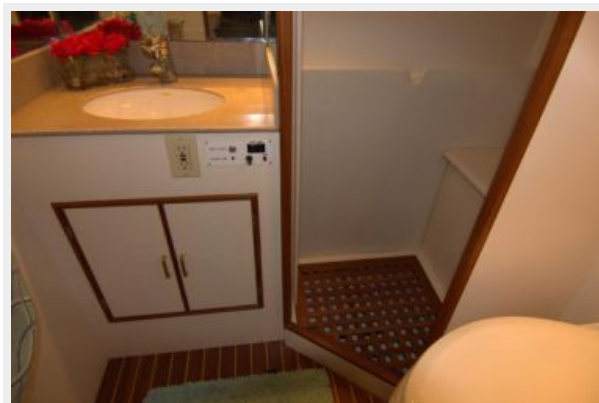
Master Bath



Guest Stateroom



Guest Head



Aft Deck



Guest Stateroom



Aft Deck



Aft Deck



Aft Deck

Aft Deck Steering



Lazarette



Lazarette



Lazarette/Watermaker



Starboard Generator



Port Generator



Engine Room



Flybridge



Flybridge Helm



Flybridge



Flybridge



Covered Tender



Tender



Outboard



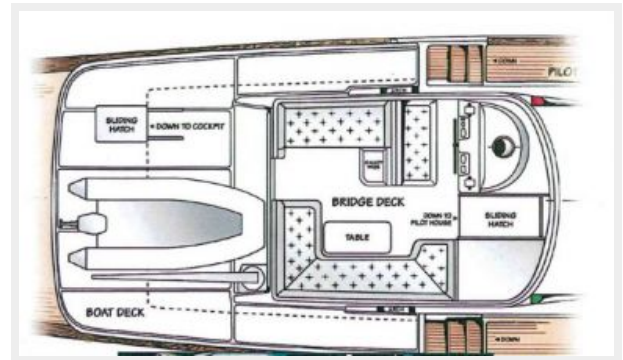
Portuguese Bridge



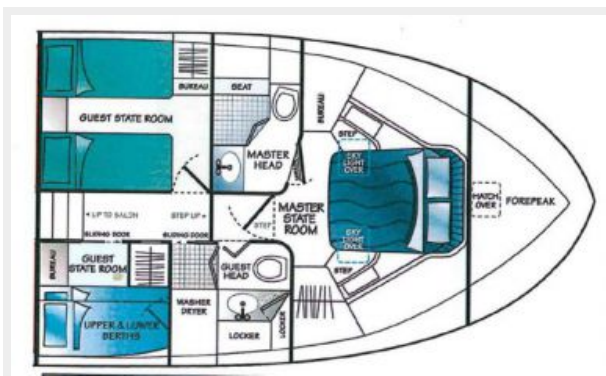
Bow



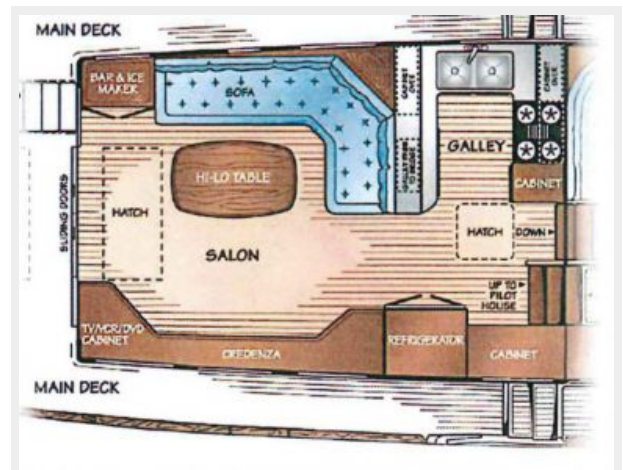
Bridge Deck Drawing



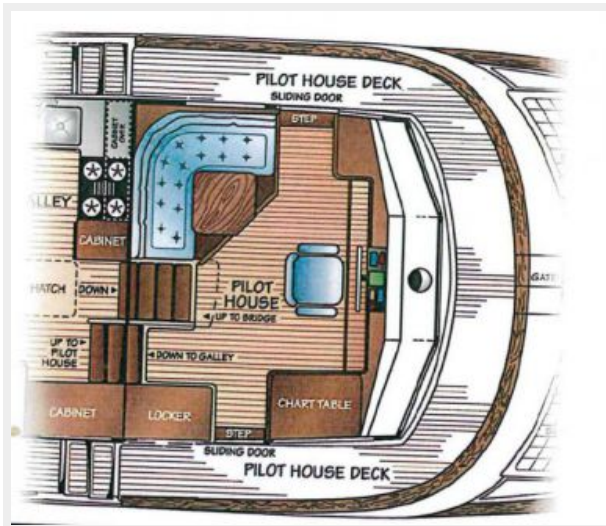
Accommodations Drawing



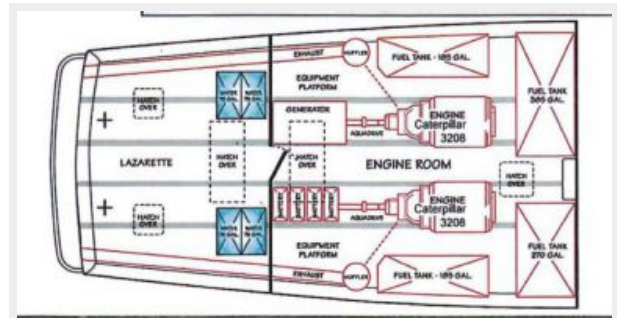
Main Deck Drawing



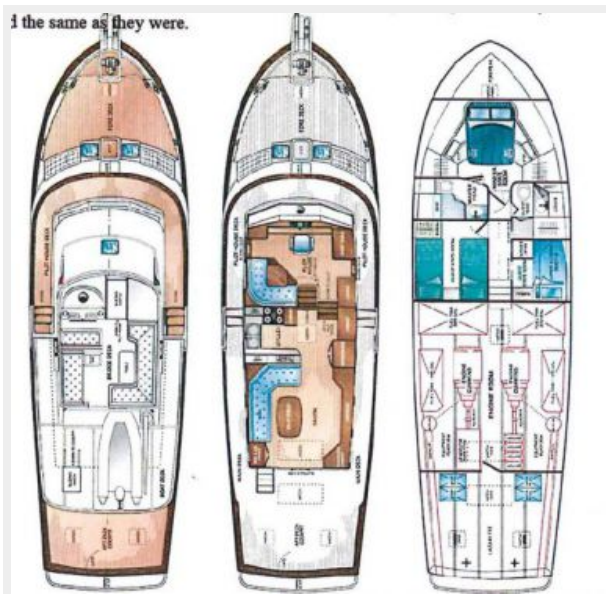
Pilothouse Drawing



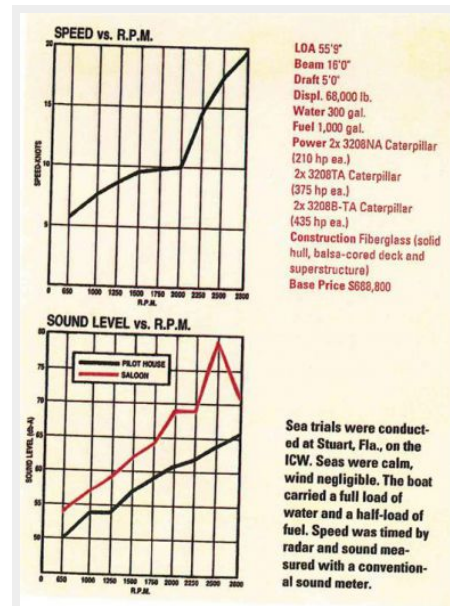
Engine Room Drawing



Line Drawings



Speed/Sound



КОНТАКТЫ

Андрей Шестаков (Andrey Shestakov) – ведущий яхтенный брокер отдела продаж яхт и судов компании Shestakov Yacht Sales Inc. Официальный представитель Shestakov Yacht Sales Inc. для русскоговорящих клиентов в центральном офисе компании в Майами/Форт Лодердейл/Флорида/США.

Контактная информация

Email: **andrey@shestakovyachtsales.com**

Web: shestakovyachtsales.com

Телефоны

Краснодарский край: **+7(918)465-66-44**

США, Майами, Флорида: **+1(954)274-4435**

Время работы

Понедельник – Суббота: **9:00 - 21:00**
EDT

Воскресенье: **Закрето**

Адрес



Harbour Towne Marina, 850 NE 3rd St,
STE 213, Dania, FL 33004