

NO VACANCY — R & R BOATWORKS



Builder: R & R Boatworks

Year Built: 2010

Model: Sport Fisherman

Price: PRICE ON APPLICATION

Location: United States

LOA: 44' 0" (13.41m)

Beam: 13' 9" (4.19m)

Max Draft: 3' 0" (0.91m)

Cruise Speed: 28 Kts. (32 MPH)

Max Speed: 35 Kts. (40 MPH)

Our experienced yacht broker, Andrey Shestakov, will help you choose and buy a yacht that best suits your needs **No Vacancy — R & R Boatworks** from our catalogue. Presently, at Shestakov Yacht Sales Inc., we have a wide variety of yachts available on our sale's list. We also work in close contact with all the big yacht manufacturers from all over the world.

If you would like to buy a yacht **No Vacancy — R & R Boatworks** or would like help answering any questions concerning purchasing, selling or chartering a yacht, please call **+1(954)274-4435**

TABLE OF CONTENTS

TABLE OF CONTENTS	2
SPECIFICATIONS	5
Basic Information	5
Dimensions	5
Speed, Capacities and Weight	5
Accommodations	5
Hull and Deck Information	5
Engine Information	5
DETAILED INFORMATION	6
Walkthrough	6
Salon	6
Galley	6
Companionway	7
Master Stateroom	7
Guest Stateroom	7
Head	7
Cockpit	7
Flybridge	8
Electronics	9
Deck/Hull	9
Engine Room	9
Remarks	10
Exclusions	10
Disclaimer	10
PHOTOS	11
Cabin	11
Cabin	11
Cabin	11

Cabin	11
Cabin	11
Cabin	11
Galley	12
Galley	12
Dinette	12
Galley/Dinette	12
Forward Stateroom	13
Forward Stateroom	13
Forward Stateroom	13
Guest Stateroom	13
Guest Stateroom	14
Guest Stateroom	14
Head	14
Head	14
Laundry	15
Rod Storage	15
Cockpit	15
Cockpit	15
Cockpit	15
Cockpit	15
Flybridge	16
Flybridge	16
Flybridge	16
Engine Room	16
Engine Room	16
Engine Room	16
Engine Room	17
Engine Room	17

Engine Room	17
Engine Room	17
Engine Room	17
No Vacancy	17
No Vacancy	18
No Vacancy	18
No Vacancy	18
No Vacancy	18
No Vacancy	19
No Vacancy	19
CONTACTS	20
Contact details	20
Telephones	20
Office hours	20
Address	20

SPECIFICATIONS

Basic Information

Category: Sport Fisherman

Model Year: 2011

Year Built: 2010

Country: United States

Dimensions

LOA: 44' 0" (13.41m)

Beam: 13' 9" (4.19m)

Max Draft: 3' 0" (0.91m)

Speed, Capacities and Weight

Cruise Speed: 28 Kts. (32 MPH)

Max Speed: 35 Kts. (40 MPH)

Water Capacity: 100 Gallons

Fuel Capacity: 670 Gallons

Accommodations

Total Cabins: 2

Hull and Deck Information

Hull Material: Fiberglass

Engine Information

Engines: 2

Manufacturer: Cummins

Model: QSC8.3

Engine Type: Inboard

Fuel Type: Diesel

DETAILED INFORMATION

Walkthrough

Flybridge and Cockpit Have A/C Vents

As you enter the cabin from the mezzanine deck the cabin door is centerline. The aft bulkhead is also removable above the tackle center to make her into an open bulkhead day boat if desired. Moving into the cabin, to port is a comfortable 4 person dinette. Across to starboard is a full length sofa. The galley is forward with under counter refrigeration. Moving below, the head is to starboard with large stall shower, guest cabin is adjacent to port. There is also an oversized tackle room to port as well as a washer & dryer to starboard. The master is forward with large convertible berth.

Salon

Bookmatched teak joiner work throughout. The aft bulkhead is removable and is stowable aboard in dedicated storage area.

- Dewberry Design sofa to starboard with storage
- 4 person dinette with teak table and storage inside seats
- 3 full length storage drawers below dinette
- Teak & Holly sole beneath dinette
- Sliding forward door to secure cabin with open bulkhead
- LED overhead lighting
- Engine room access
- Samsung TV with pop up actuator
- Fusion MS-AV700 entertainment center (2015)
- Icom 504 VHF radio
- Carpeting (2015)

Galley

- Bookmatched teak joiner work throughout.
- Granite countertops, Honeycomb light weight backing
- Sub Zero drawer style refrigerator
- Sub Zero drawer style freezer with ice maker
- Stainless Steel undermount sink
- Garbage disposal
- Emerson microwave/convection oven
- Built in dish and glass storage
- Abundant drawer storage

Companionway

- Steps with storage
- Laundry center with Splendide washer & dryer
- Tackle room
- Access to all accommodations and head

Master Stateroom

- Located forward, centerline
- Two bunks in V-berth configuration with filler cushion to make into a queen
- Upgraded mattresses
- Port and starboard cedar lined hanging lockers
- Large storage area beneath both bunks
- Port and starboard credenzas with drawer storage and granite light weight countertops
- Overhead hatch
- Reading lights
- LED overhead lighting
- Carpeting

Guest Stateroom

- Upper and lower berths
- Lower berth has storage beneath
- Upgraded mattresses
- Cedar lined hanging locker
- Teak credenza with light weight Granite countertop
- Reading lights
- LED lighting overhead

Head

- Mirrored medicine cabinet with storage inside
- Light weight Granite countertop with undermount sink
- Stall shower with glass shower door
- Shelf storage area
- Teak & Holly sole
- Electric head

Cockpit

- Mezzanine seating
- Cockpit air conditioning from overhead vents
- Teak covering boards
- Teak cockpit sole
- Stainless lined bait freezer
- Stainless lined refrigerated drink box
- Insulated bait box
- 2 live bait wells in mezzanine steps
- 1 live bait well in deck
- Abundant tackle storage, starboard side
- Under floor mounted fish box, insulated
- Transom door
- Corner hawse pipes
- Port and starboard DC plugs
- 110 volt outlet
- Fresh and salt water wash down
- LED lighting in overhead
- Lighting below gunnels
- Stereo speakers
- Molded in track for cockpit fly cover
- 50 amp shore cord hook up
- Screwless rod holders
- Gaff storage
- Cockpit fly cover

Flybridge

- Helm air conditioning
- High Seas molded hard top
- Centerline helm
- Electronics console with clear hinged door
- Teak helm pod
- Single lever controls, Glendenning
- Main engine ECM's molded into hardtop
- Port and starboard bench seats with storage inside
- Reversible bench seat back
- 4 sided acrylic enclosure, aft side in storage
- Miya Epoch US#9 teaser reels HD
- Bluewater teak helm chairs with 4" pedestal
- Molded in lighting beneath hardtop
- Molded in aft spreader lights
- Teak cap rails
- Storage in brow

- Aluminum flybridge ladder with teak steps
- Ritchie compass, centerline

Electronics

- Garmin 7212 GPS/plotter
- Garmin 5212 GPS/plotter
- Garmin radar, 72 mile
- Garmin color sounder
- KVH trac vision M-5 (2015)
- Simrad autopilot
- Icom M-504 VHF radio

Deck/Hull

The hull is laminated using vacuumed infused resin process making the hull extremely strong and rigid. Multi-directional fabrics as well as corecell and Kevlar from the keel to above the water line are used. The transom has two layers of Kevlar.

- Prop pockets, shallow draft of 3'
- White hull color
- Black boot stripe
- Transom door
- Lenco trim tabs
- Lumishore underwater lights (2015)
- Anchor locker on foredeck
- Teak toe rail and cap rails
- Livos hull vents
- Teak deck and covering boards

Engine Room

The engine room is completely fared and painted throughout.

- Twin Cummins QSC 600hp engines with 650 hours
- Phasor 12kw generator with 675 hours
- Sea Torque oil both shaft tubes
- Sea Torque steering system
- Sea Recovery aquamatic 900 water maker (2015)
- Dometic Eskimo ice machine (2015)
- Livos hull vent system
- Cruise Air air conditioning system

- Sea chest
- Copeland air and water cooled cockpit refrigeration compressor
- AC/DC lighting
- Fuel manifold
- 24 volt battery charger
- 12 volt battery charger
- Battery disconnect switches
- Racor primary fuel filters, mains & gen
- Oil change system
- Fire system
- HeadHunter fresh water pump
- Water heater
- Salt water washdown pump

Remarks

The No Vacancy was built by R & R Boatworks. The principle at R & R had a 61' Garlington built and then went on to build the popular Conch boats. The 44' R & R was built out of the legendary soft riding and dry 44' Garlington mold. This boat will exceed all of your expectations. She is extremely soft riding in the harshest of seas as well as dry. A very economical cruise of 28 knots, depending on load, with a fuel burn in the low 40's. Her joiner work is impeccable throughout. Besides all of this, she also has prop pockets giving her a draft of only 3' which not only makes her able to navigate the shallowest of places, she also spins on a dime giving the angler a huge advantage. Don't miss your opportunity to own the most high tech game boat available.

Exclusions

Owner's personal belongings.

Disclaimer

The Company offers the details of this vessel or yacht in good faith but cannot guarantee or warrant the accuracy of this information nor warrant the condition of the vessel. A buyer should instruct his representatives, agents, or his surveyors, to investigate such details as the buyer desires validated. This vessel or yacht is offered subject to prior sale, price change, or withdrawal without notice.

PHOTOS

Cabin



Cabin



Cabin



Cabin



Cabin



Cabin



Galley



Galley



Galley/Dinette



Dinette



Forward Stateroom



Forward Stateroom



Forward Stateroom



Guest Stateroom



Guest Stateroom



Guest Stateroom



Head



Head



Laundry



Rod Storage



Cockpit



Cockpit



Cockpit



Cockpit



Flybridge



Flybridge



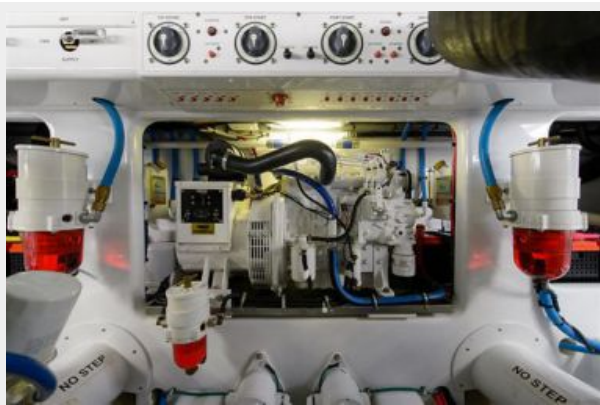
Flybridge



Engine Room



Engine Room



Engine Room



Engine Room



Engine Room



Engine Room



Engine Room



Engine Room



No Vacancy



No Vacancy



No Vacancy



No Vacancy



No Vacancy



No Vacancy



No Vacancy



CONTACTS

Andrey Shestakov, leading yacht broker of the sales department of Shestakov Yacht Sales Inc. Shestakov Yacht Sales Inc., the official representative of the Miami/Fort Lauderdale FL headquarters.

Contact details

Email: andrey@shestakovyachtsales.com

Web: shestakovyachtsales.com/en/

Telephones

USA: +1(954)274-4435

Office hours

Monday – Saturday: **9:00 - 21:00** EDT

Sunday: **closed**

Address



Harbour Towne Marina, 850 NE 3rd St,
STE 213, Dania, FL 33004